



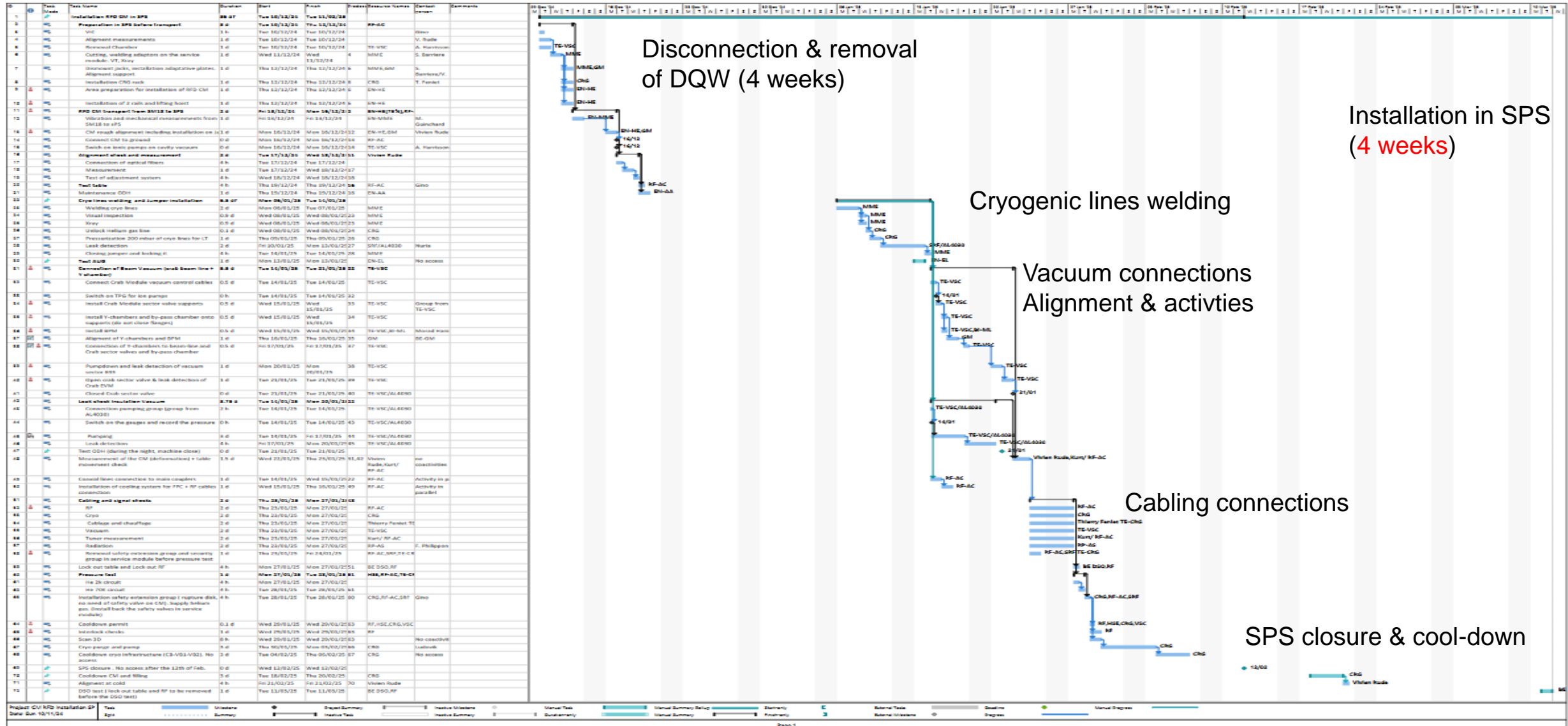
Plans for Crab cavities in 2025-26

HL-LHC WP4

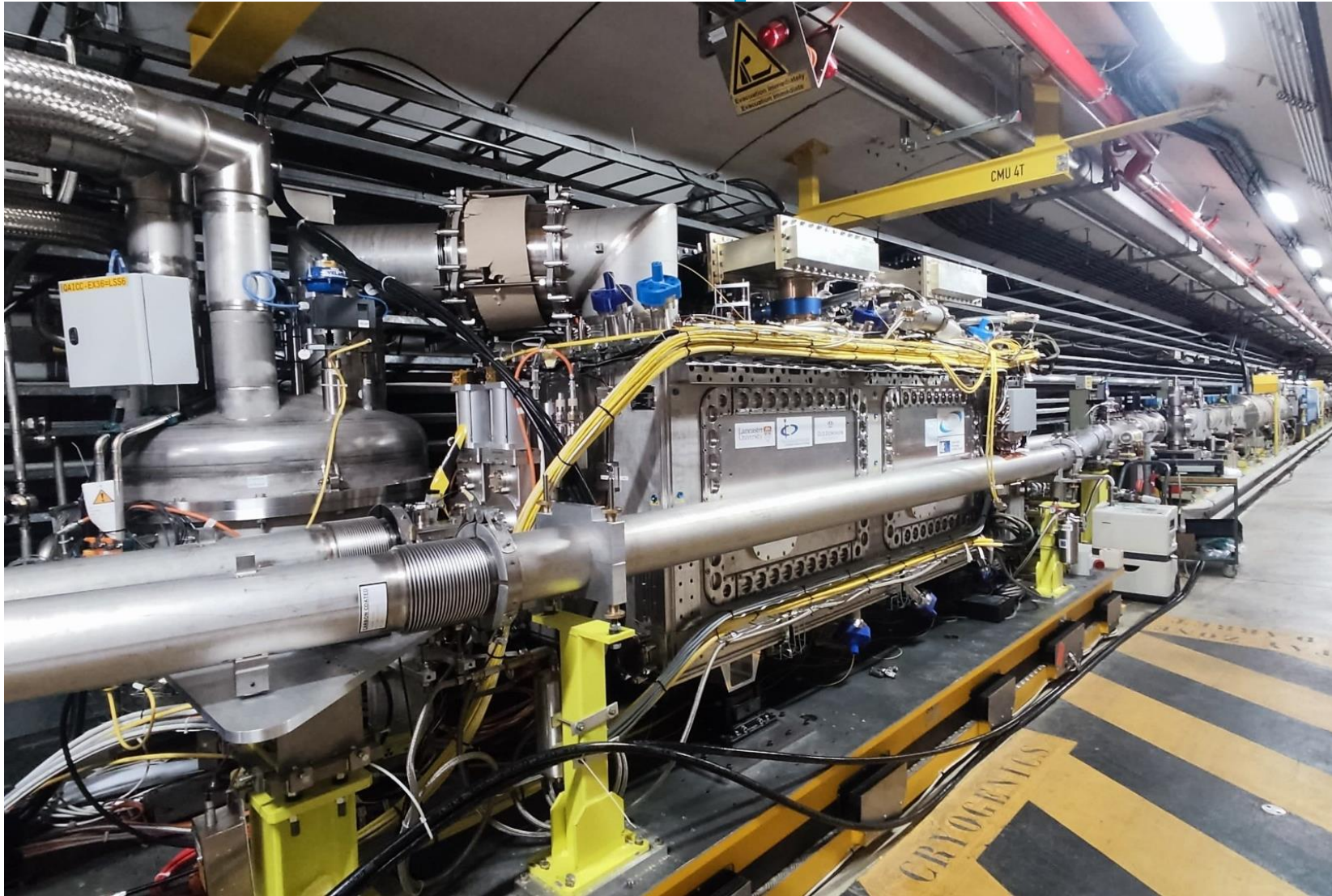
IPP MD Days, 3-Feb-2025



Installation Schedule



RF Dipole in the SPS

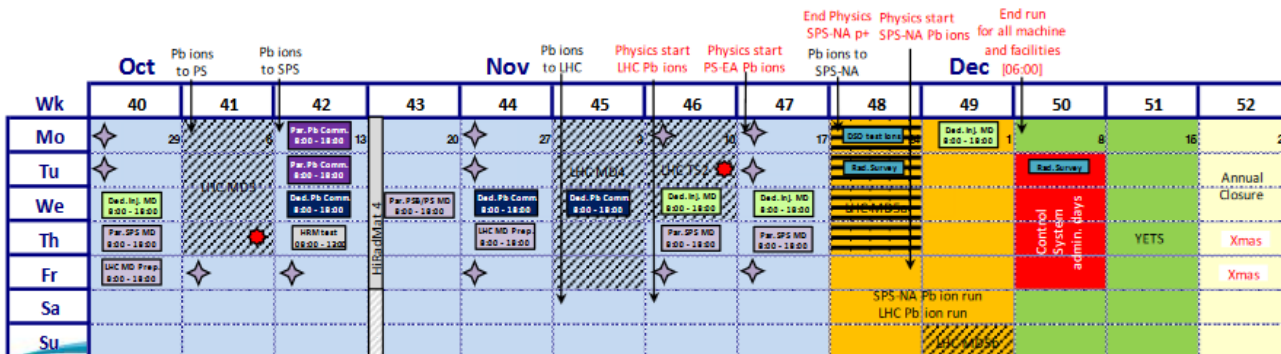
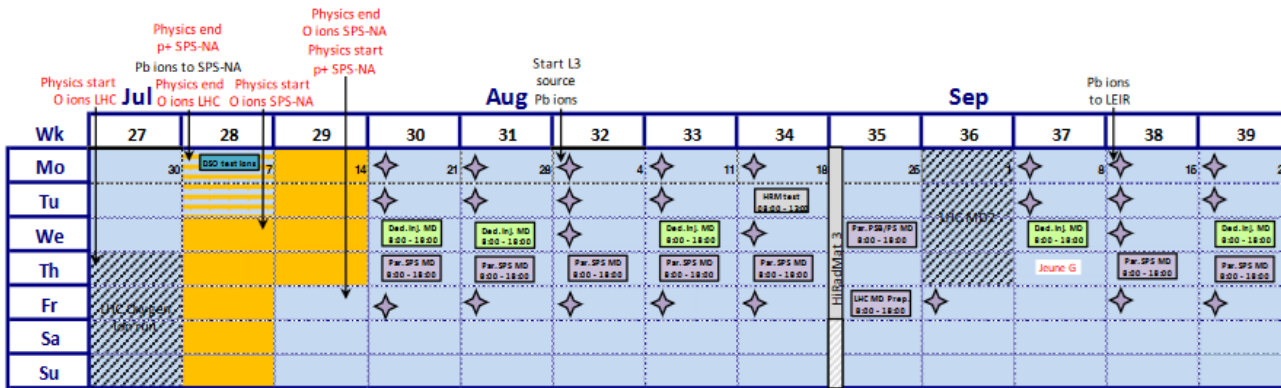
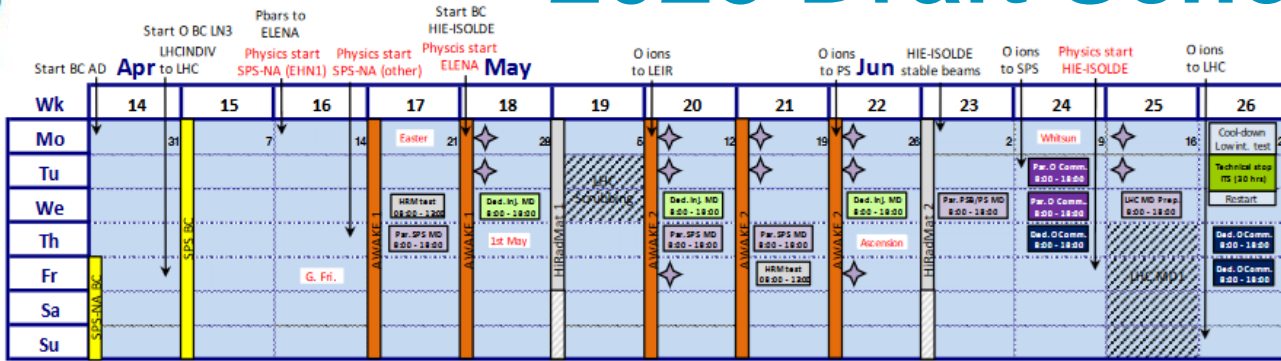


Cool-down starts
12h today

No access to BA6
until 06-Feb

Closure as
foreseen with final
cool-down 18-Feb

2025 Draft Schedule: SPS



- RF conditioning to start as soon as cryo-ok end-Feb. Crab line in the beam for scrubbing (wk 13)
- Request to host 3+3 MDs with a standby period in Aug (one before TS)
- MD#1 dedicated to cavity setup with beam, phasing, HT monitor measurements. Maybe not compatible with scrubbing in wk 13
- Request for a dedicated MD with protons in Oct

RFD-tests in 2025

MD #1	Beam setup with horizontal crabbing, RF-ON sequence, direct beam coupling, tuner control, crab instrumentation
MD #2	High intensity with RFD at injection & cavity alignment
MD #3	Emittance growth with phase/amplitude noise, 270 COAST Standby
MD #4	Fundamental mode stability with batches (48 or 72)
MD #5	Fundamental mode stability studies II
MD #6	High intensity ramp, machine protection, LLD in longitudinal plane, collimation studies, RF multipoles