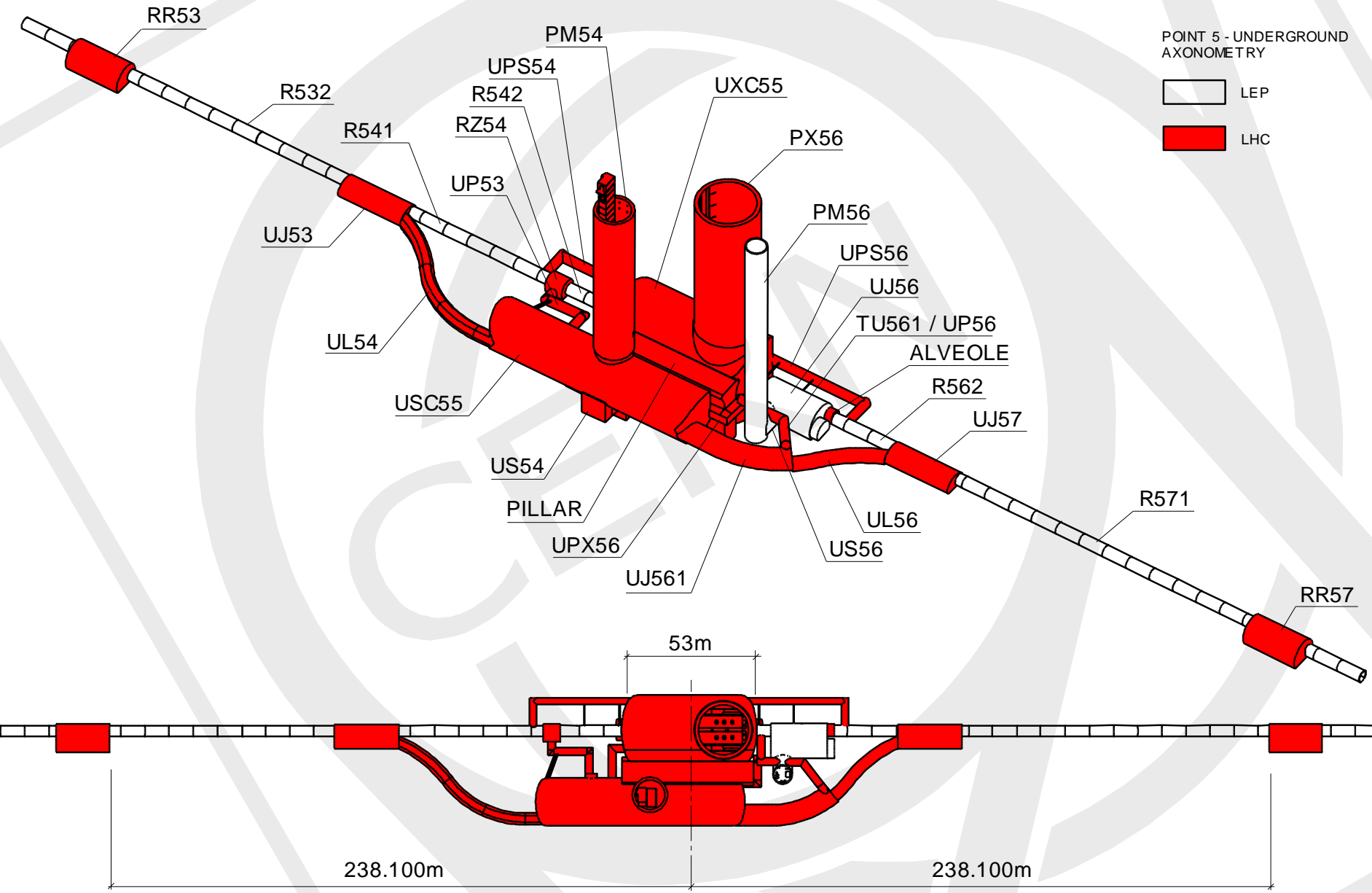
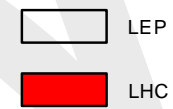


POINT 5 - UNDERGROUND  
 AXONOMETRY





1998





1999



1999







1999





1999





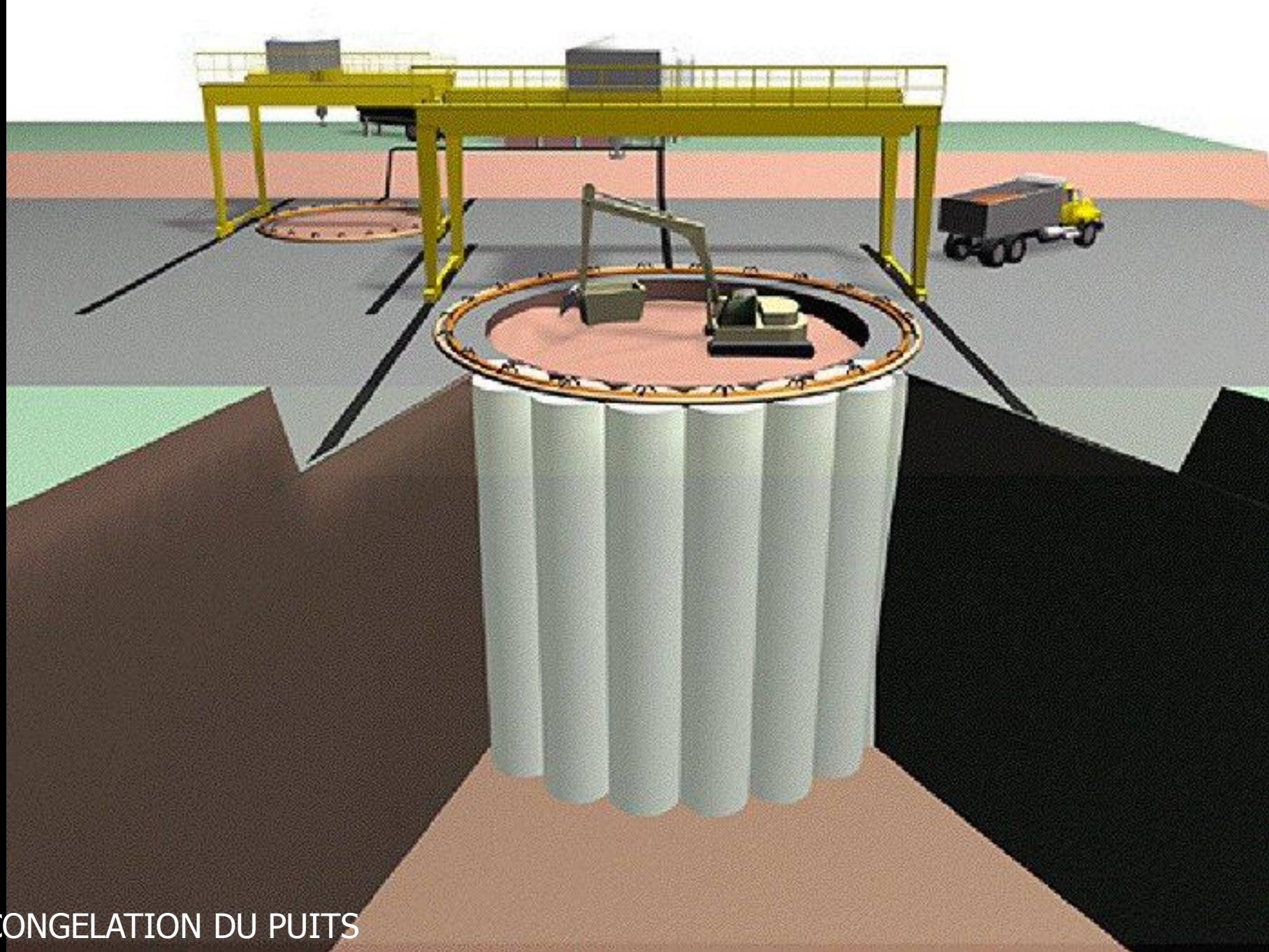
2001





2003





CONGELATION DU PUIT





1999





1999





1999





2000





2000





2000





2000





Point 5 - Shuttering for the first layer of pillar concrete - April 20, 2001 - CERN ST-CE





Point 5 - UXC55 cavern excavation - LEP demolition - January 23, 2002 - CERN ST-CE





2004





2004





سازمان  
مهندسی  
و معماری



2004







2004





2004





2003



2003

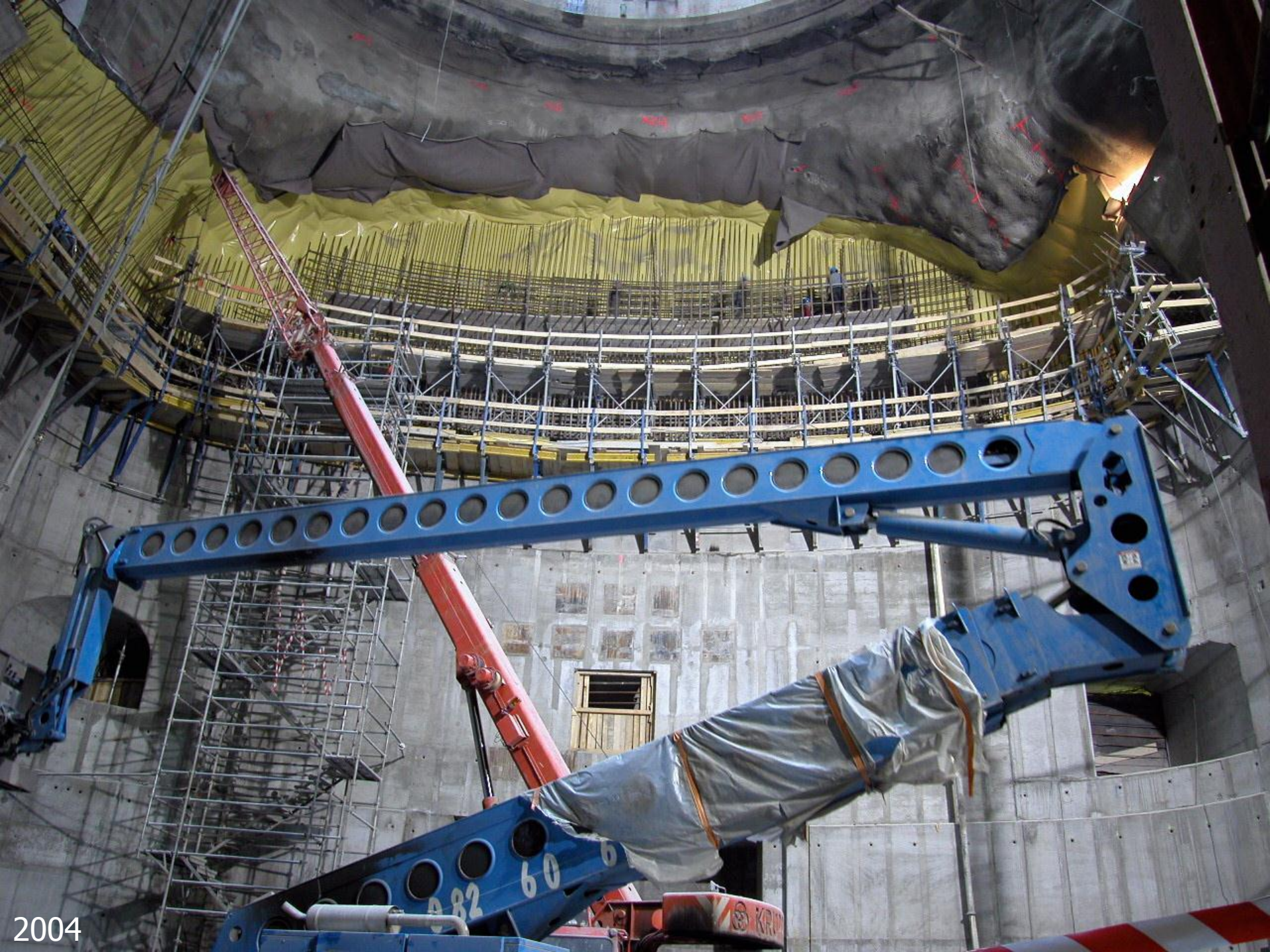




2004







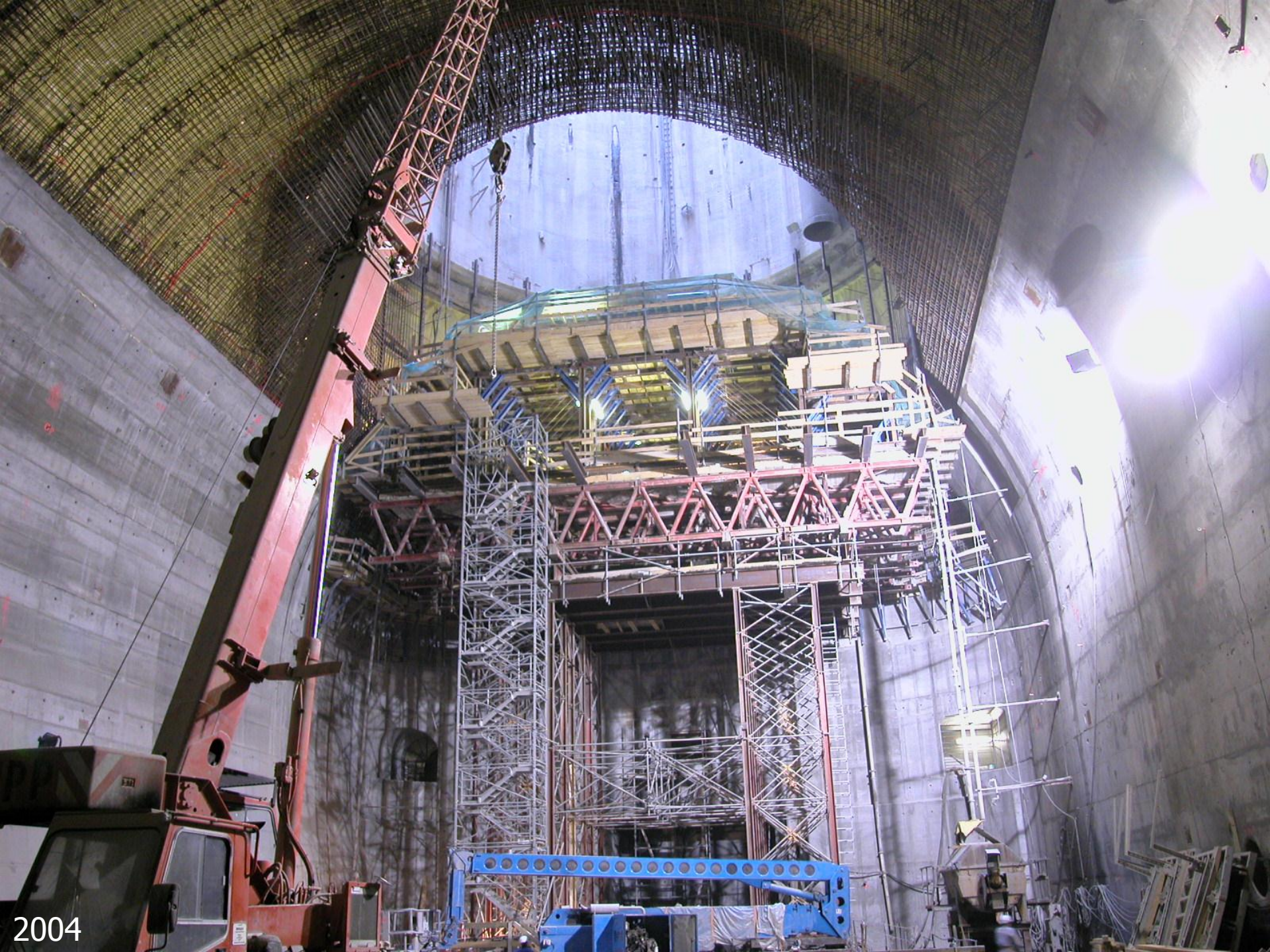
2004





2003





2004





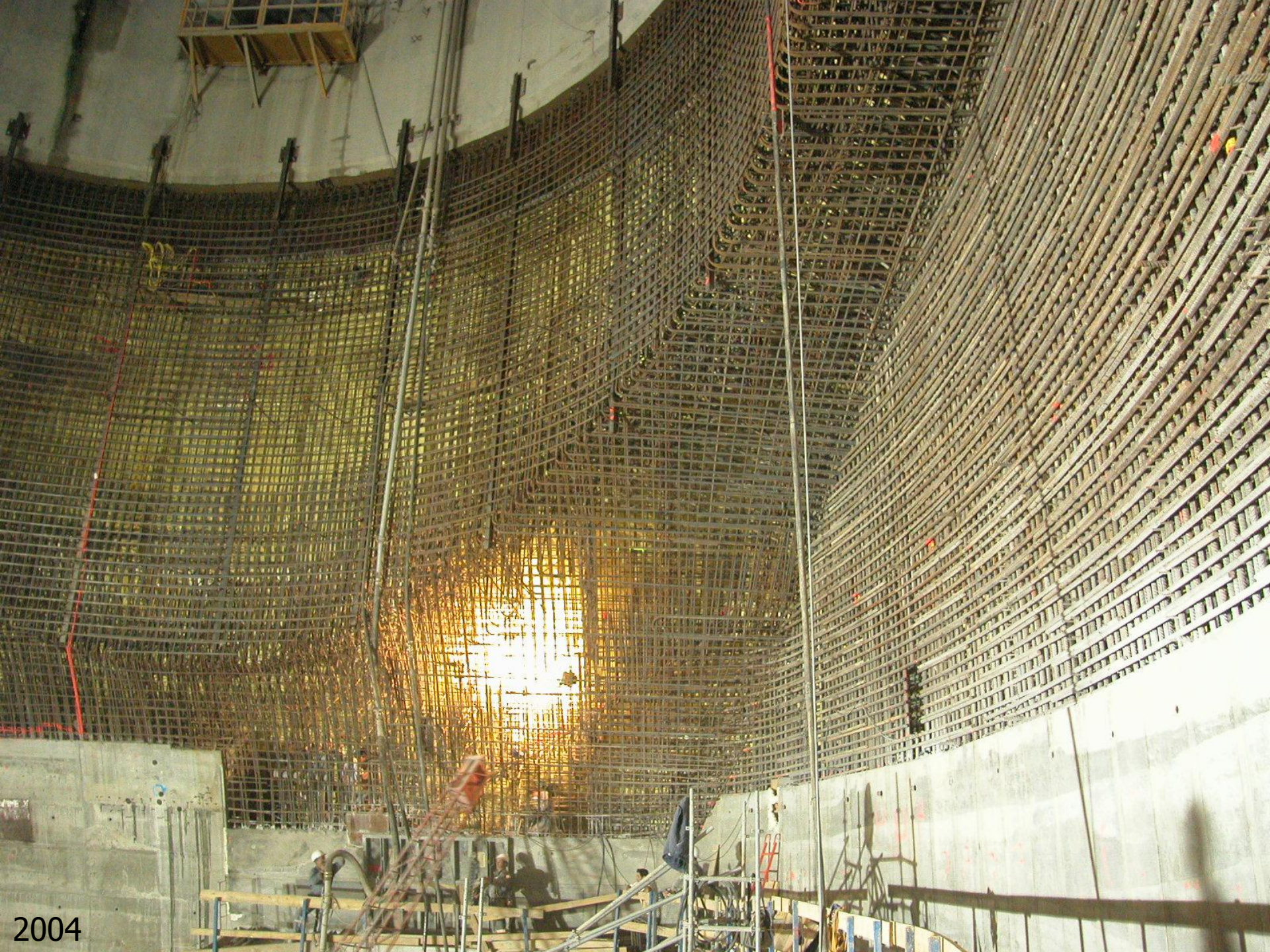
2004





2004





2004





2004





2004





2004





2004





2004





2004





2005





2005





2005





2004





2003



2001







EXIT

2003





2004





2004





2004





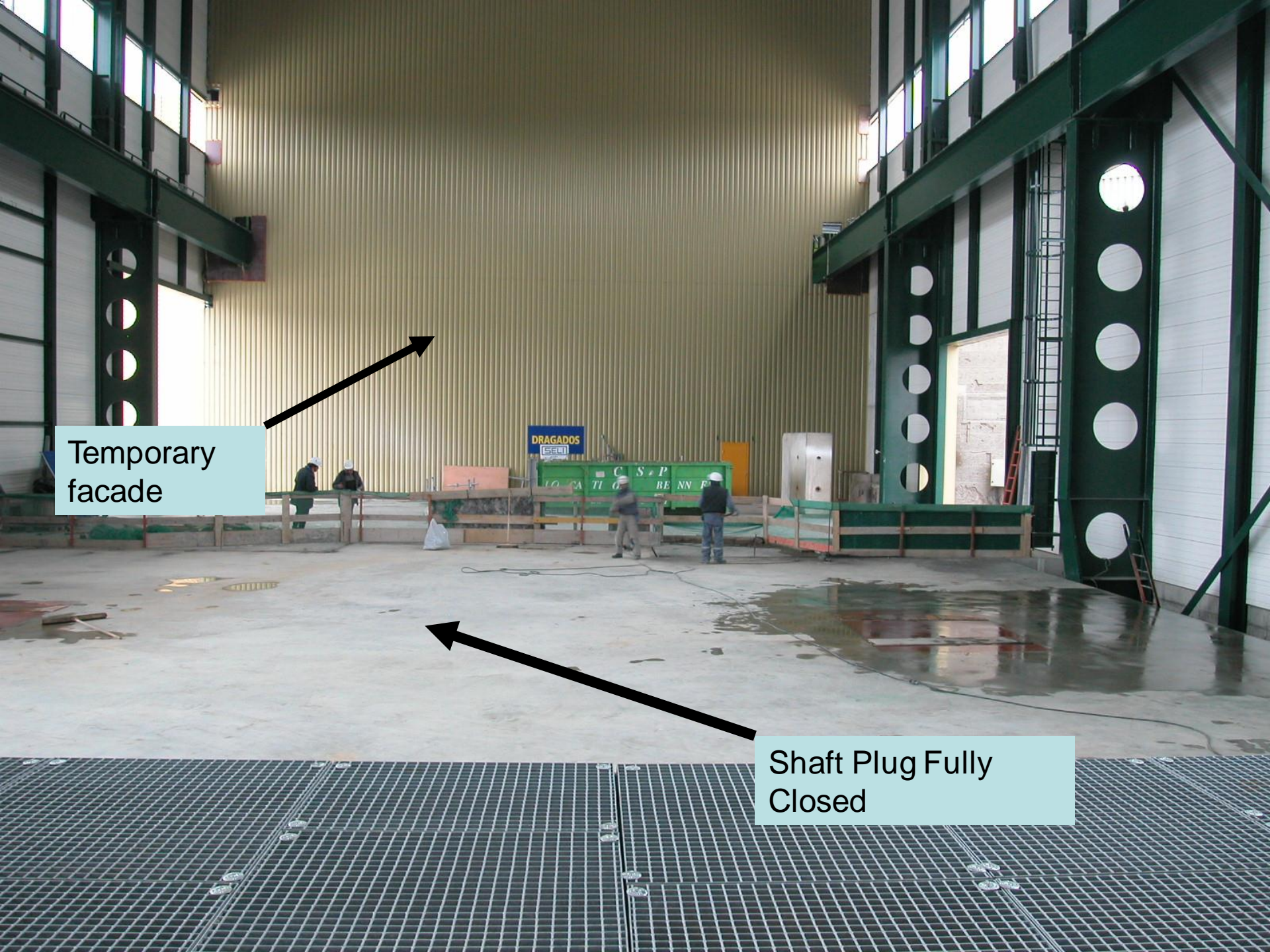
2004



Temporary facade



Shaft Plug Fully Closed







SX5 Building Extension