

Hunting For Hardware Changes in Data Centres

Computing Facilities
Planning and Procurement

Miguel Santos
CHEP 2012

- CERN Data Centre:
 - ~10K servers, ~15K CPU, ~55K DIMMs, ~60K HDD, ~17K NICs
- To answer questions:
 - For how long should we burn-in servers?
 - Is there a systematic problem?
 - When should we stop running old servers?
- Hardware Failures
 - Actually, **replacements**
 - HDD MTTF 320,000 hrs (not 1.2 Mhrs)
 - What about annualized failure rate (AFR)?
 - By disk age? By server purchase order (server vintage)?

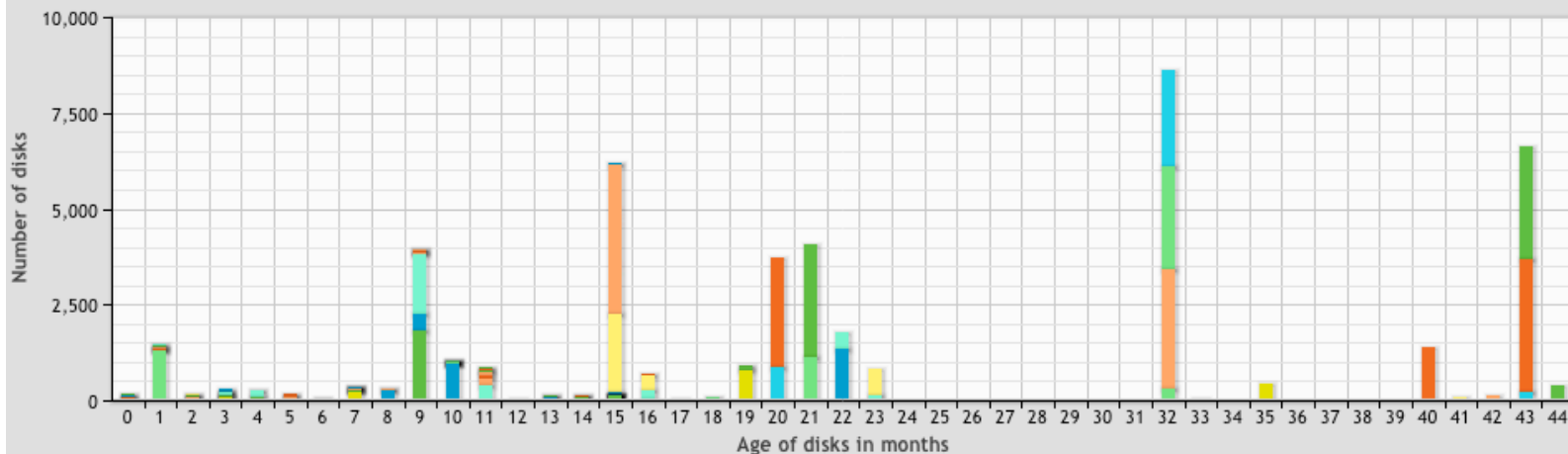
- Not only to know what we have and track when it changes...
- ... but also to track all components, their age, and to keep a detailed record of all the changes (serial, model, firmware, revision)
- We started storing the data on a couchdb instance



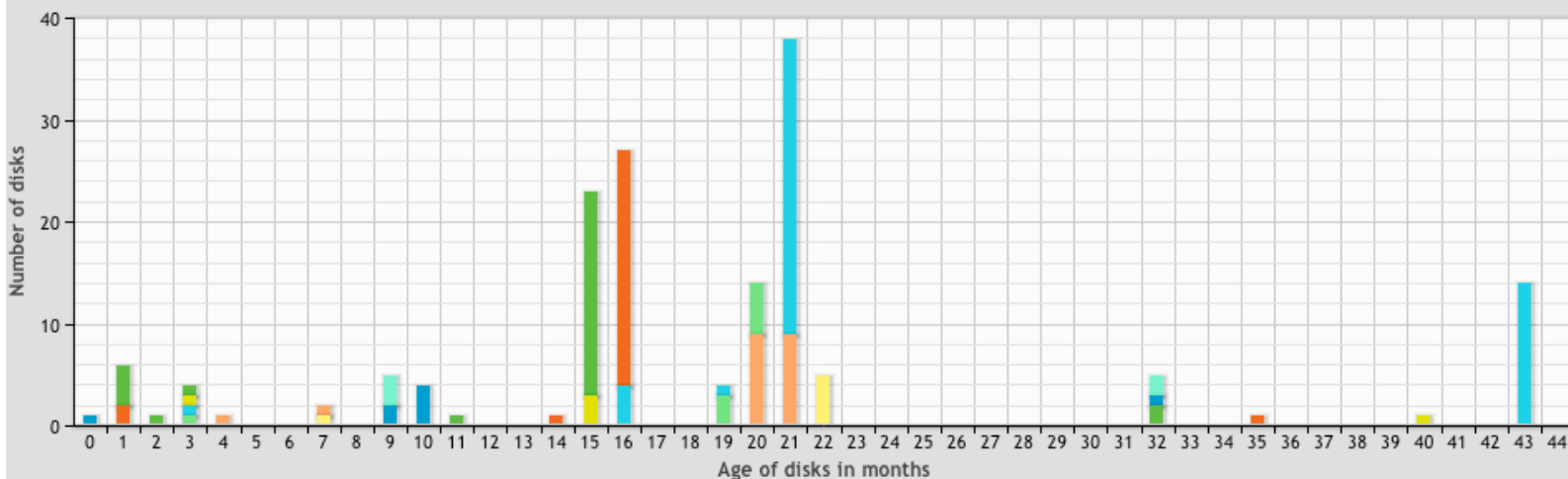


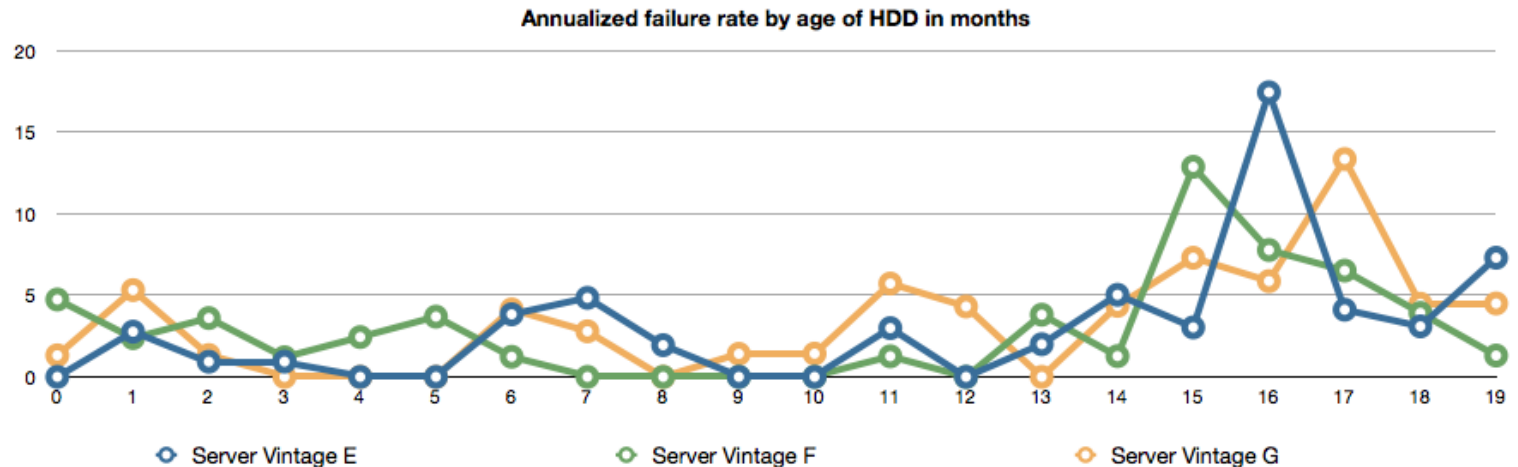
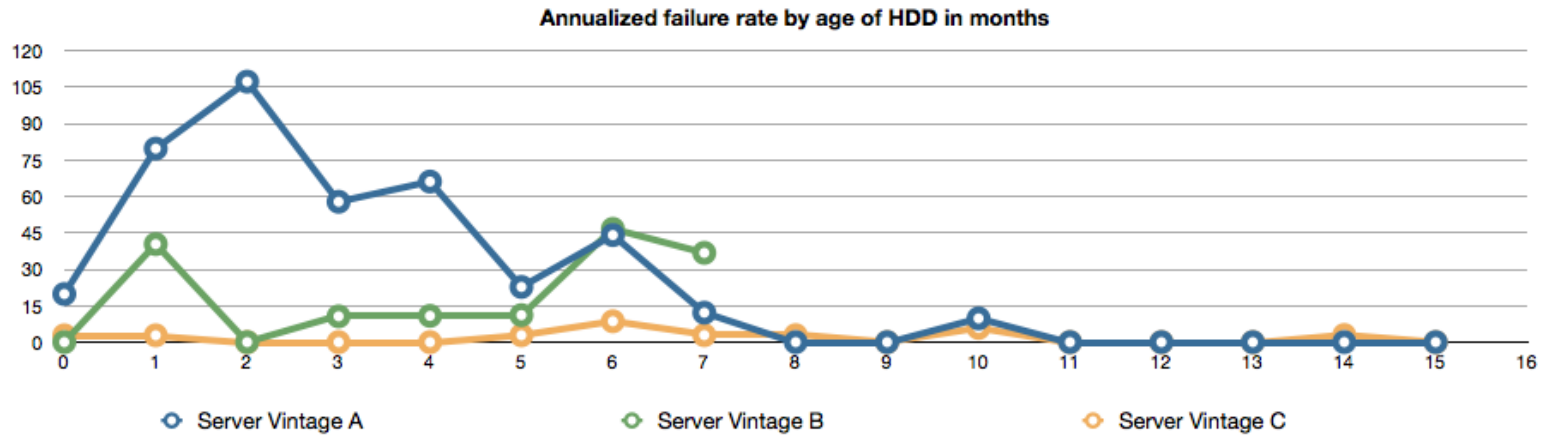


Disk population at the end of December 2011



Disk replacements during December 2011





CF

End

