



Enabling Grids for E-science

e-Learning Digital Library and the NA3 Editorial Task Force

Mike Mineter

*Training Outreach and Education
University of Edinburgh, UK*

www.eu-egee.org



- **The challenges to be addressed in accessing and re-using training material to achieve high quality courses**
- **The NA3 solutions**
 - The EGEE Digital Library
 - The “Editorial Task Force”

- **Training effort is tiny in comparison to the need for training**

Need gain maximum benefit from each presentation & tutorial by enabling re-use

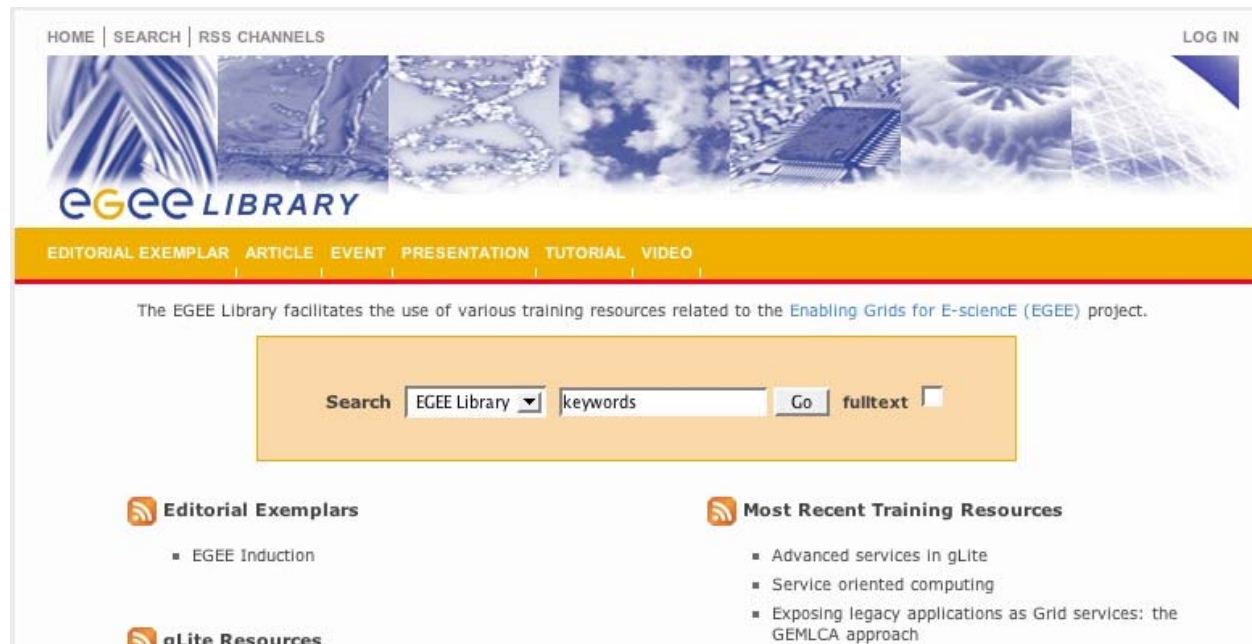
- **In EGEE-I a huge number of presentations were held in a repository – became very unwieldy**

Need mechanisms to simplify selection of relevant material for future courses and for self-guided learning

- **This talk seeks to outline the responses in NA3**

The hardest challenge:


For these to have impact, we all have to use them!!




- **Open to everyone for search and retrieval**
<http://egee.lib.ed.ac.uk>
- **Its impact depends on whether we all add material / comments**
- **Also accessible via web services - by negotiation**
- **Based on Fedora open source repository and international standards**


HOME | SEARCH | RSS CHANNELS

EDITORIAL EXEMPLAR ARTICLE EVENT PRESENTATION TUTORIAL VIDEO

Results: Found 2860 matches. Displaying 1 - 10  Sort by date

◀◀ ◀ 1 2 3 4 5 6 7 8 9 10 ▶ ▶▶

Advanced services in gLite 
[Presentation] 2006-07-12

Service oriented computing 
[Presentation] 2006-07-12

Exp HOME | SEARCH | RSS CHANNELS
[Pre EDITORIAL EXEMPLAR ARTICLE EVENT PRESENTATION TUTORIAL VIDEO
Den

Results: Found 68 matches , displaying 1 - 10

◀◀ ◀ 1 2 3 4 5 6 7 ▶ ▶▶

Grid Proxy and Myproxy
... the URL, please select : **Grid proxy** and MyProxy Giuseppe**Grid Proxy** and Myproxy The ...
[Presentation]

Grid Proxy and Myproxy
Grid Proxy and Myproxy Title ...
[Presentation] 2004-05-24

Grid proxy and MyProxy
Grid proxy and MyProxy Title ...
[Presentation] 2004-05-24

<http://pub-195.nesc.ed.ac.uk:20200/fedora/get/lib:733/txt2>
... directly create a **proxy** from **grid-proxy**-Init. The proxy ... of the delegator 3) **grid** ...
[plain]

- Resource discovery services including search and browse resource types
- Metadata search
- Full-text search inside documents, e.g. useful for location command line usage
- Cross-search other digital libraries
 - ICEAGE
 - BELIEF (in development)
- RSS feeds

- Open to everyone for search/retrieval
- Its value depends on us all
- **You are asked to add material** from training courses:
 - Courses
 - Modules
 - Presentations
 - Tutorials (practical sessions – often a URL – note make self-sufficient with tar files etc. so can re-use in future)
- **No need to add every course/ presentation**
 - Don't just replicate existing entries!
 - Ensure the best material is in the Digital Library
 - And then add comments
- **AND to comment on material**
 - to help others make better use of it
 - E.g. to say what is new in this, to correct errors, to say when material is superseded.
- **Also add other types of material: websites, documents,...**

- Open to everyone for search/retrieval
- Its value depends on us all
- You are asked to add material from training courses:

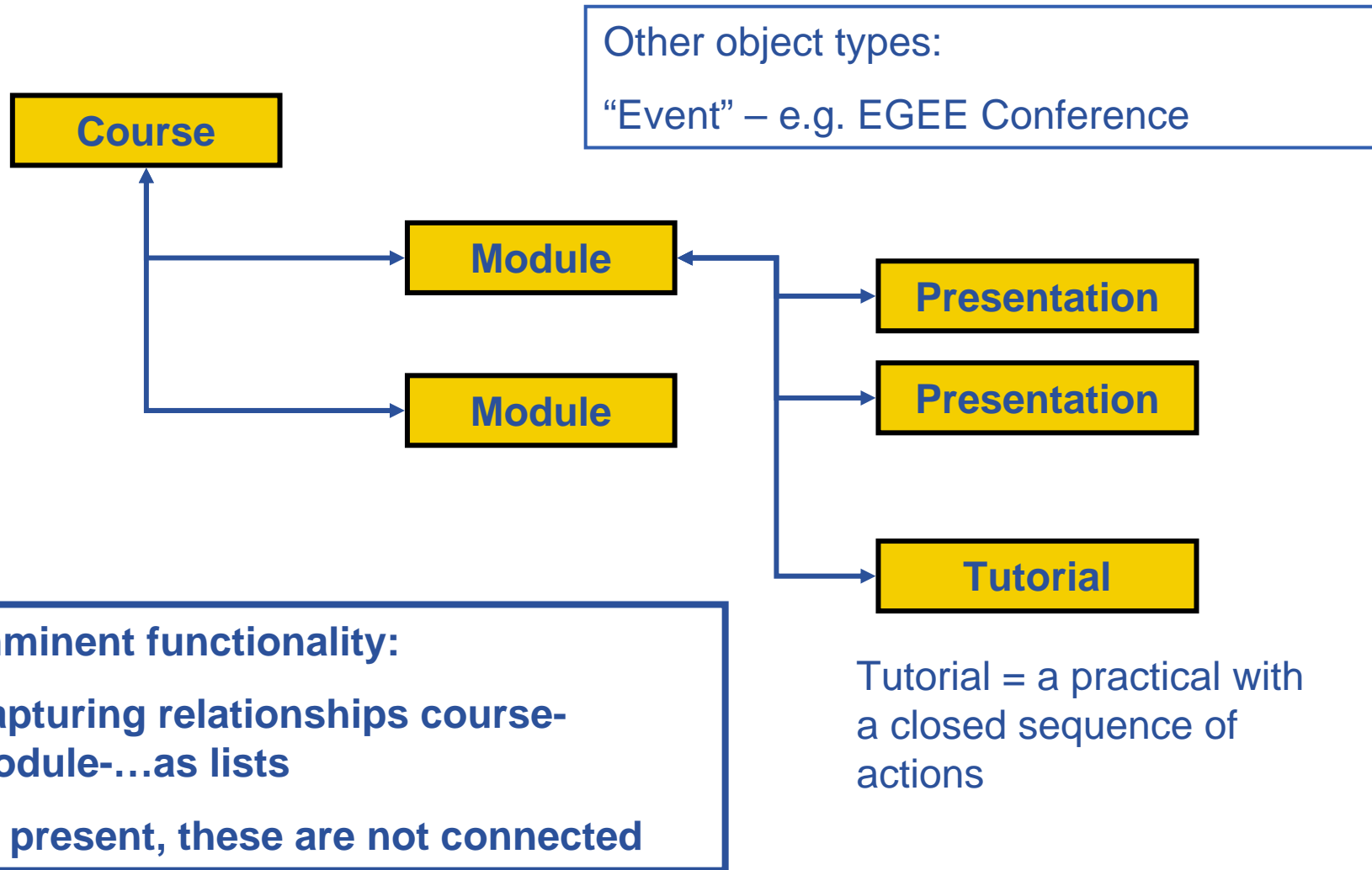
- Courses
- Modules
- Presentations

- Tutorials (practical sessions, self-sufficient with tar files etc. so can re-use in future)

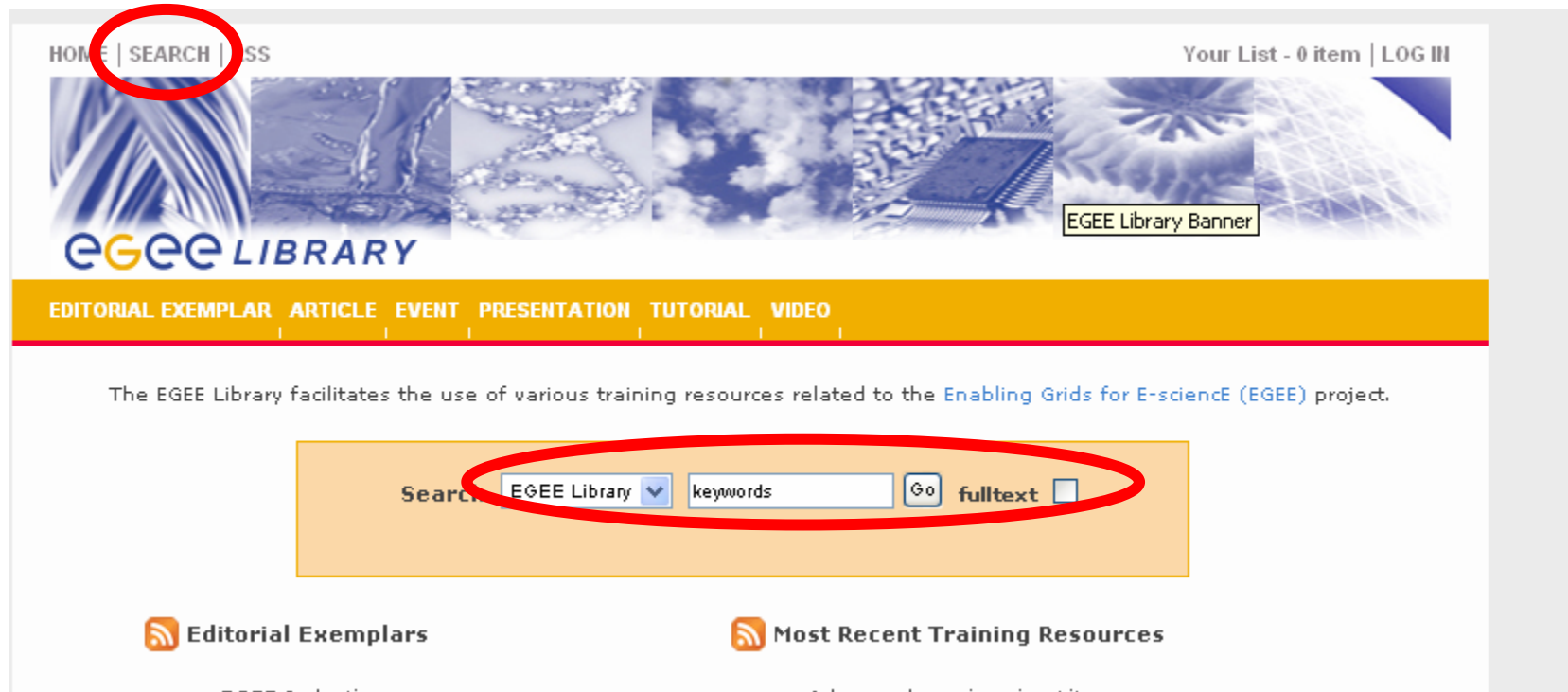
NOTE Be precise with these terms: will improve searchability!

.... An internationally agreed taxonomy!

- No need to add every course/ presentation
 - Don't just replicate existing entries!
 - Ensure the best material is in the Digital Library
 - And then add comments
- AND to comment on material
 - to help others make better use of it
 - E.g. to say what is new in this, to correct errors, to say when material is superseded.
- Also add other types of material: websites, documents,...



- Go to <http://egee.lib.ed.ac.uk/>
- Search by either of two routes:



- **Requires recognised e-science CA certificate in browser**
- **GILDA is recognised**
- **To add material (upload files or enter URL):**
 1. You create a “stub” and enter metadata
 2. The Digital Library editor confirms this
 3. Then the material becomes visible
- **Stub & confirmation – protects DL**
 - How should we make scalable the confirming of stubs? Extra role for the ETF??
- **Hidden slides in this presentation lead you through adding material/comments.**

EGEE > EGEE Library - Microsoft Internet Explorer

File Edit View Favorites Tools Help

Address <http://egee.lib.ed.ac.uk:8080/>

HOME | SEARCH | RSS

Your List - 0 item | LOG IN

egEE LIBRARY

EDITORIAL EXEMPLAR ARTICLE EVENT

The EGEE Library facilitates the u

Search

Editorial Exemplars

- EGEE Induction

gLite Resources

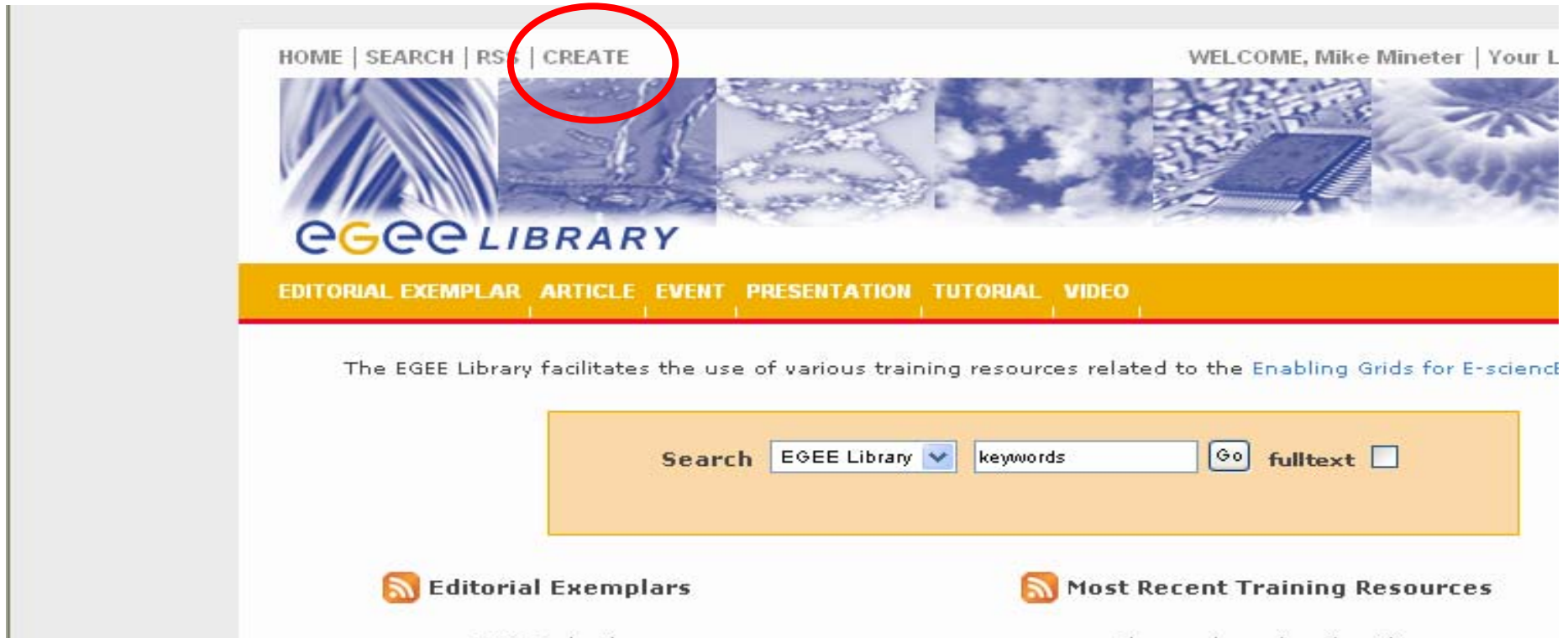
- Advanced services in gLite
- The gLite FTS
- Architecture of the gLite DMS
- Overview of the gLite middleware
- Authorization and authentication in gLite
- The gLite Information System
- Exposing legacy applications as Grid services: the GEMLCA approach
- Demonstration and practical hands-on with GEMLCA
- Advanced features of the P-GRADE portal
- Grid interoperability demonstration: EGEE, UK NGS, US OSG, UK Westfocus Grid
- Practical hands-on with EGEE data management Pt. 2
- Grid application support by the P-GRADE Portal

Login to add material or comments.... Needs certificate in your browser

Many CA's are accepted – not yet all!

GILDA certificates are accepted

start | 6 Windows E... | EGEE > EGEE L... | clapton.nesc.e... | Inbox - Micros... | Calendar - Micr... | Microsoft Powe...



- After logging in you see a “create” option

Create a resource stub by choosing a type with a title.

Title

Type

- Article
- Audio
- Book
- Case Exemplar
- Course
- Event
- Exam
- Exercise
- Handbook/Manual
- Journal
- Module
- Presentation
- Report
- Self-Assessment
- Series
- Software
- Tutorial
- Video
- Working paper
- Web Service
- Website

Select a type best fit the resource.

is a piece of object that *doesn't exist* in the library. It is
ires collaborative elaborations, e.g. through wiki.
available for editing via the wiki services, *subject to the auditing*
rary editors.
eline.

For NA3 objects enter
Title
Type: Course, Module, Presentation, or Tutorial

Create a resource stub by choosing a type with a title.

Title

Type

Presentation

Select a type best fit the resource.

Create

Check



A resource stub is a piece of object that *doesn't exist* in the library. It is incomplete and requires collaborative elaborations, e.g. through wiki.

Once created it is available for editing via the wiki services, *subject to the auditing and review of the library editors*.

See '[stub](#)' for a guideline.

The page currently requires Internet Explorer/Mozilla/Firefox browsers.

After entering title and type, create/check options appear

Create: creates a "stub"

[DETAILS](#) |
 [EDIT](#) |
 [ATTACH](#) |
 [HISTORY](#) |
 [COMMENTS](#) |
 [ADD TO LIST](#)

Attaches URL

Title Application Development and Aspects of gLite 3.0
Type Presentation
Relation New resource stub |

Link(s) [URI](#) [OpenURL](#) [\[this page\]](#)

Description

This is a new resource entry (stub) which has r
Please bookmark this page (URL) since it is not
editors incorporate it into the main catalogue.

Please provide further details using the 'edit'
does not contain sufficient information on the
a stub. The library values stubs as useful first
to communities.

Comments - [write a comment](#)

Title Application Development and Aspects of gLite 3.0
Type Presentation
Relation New resource stub |

Link(s) [URI](#) [OpenURL](#) [this page]

Description

This is a new resource entry (stub) which has r
 Please bookmark this page (URL) since it is not
 editors incorporate it into the main catalogue.

Please provide further details using the 'edit'
 does not contain sufficient information on the
 a stub. The library values stubs as useful first
 to communities.

Comments - [write a comment](#)

Edit metadata

DETAILS EDIT ATTACH HISTORY COMMENTS ADD TO LIST

Editor View General | Description | Educational | **Save Edits**

Application Development and Aspects of Java 3.0

Not necessary to complete all fields

Title
Creator

Mike Mineter ?

Contributor

? ?

ISBN urn:ISBN: ?

ISSN urn:ISSN: ?

Part of ?

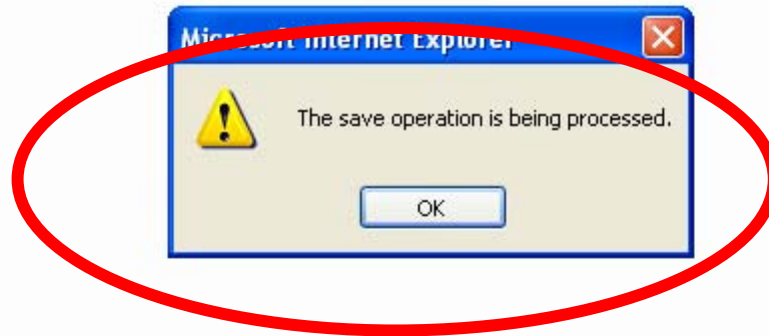
Volume

Issue

Pages

On completion save edits

Are you sure you want to save this - as the most current version of metadata? [No] [Yes]
All edits will be logged as history and subjected to editor audits.



Click on ok – don't wait!

The page currently requires Internet Explorer/Mozilla/Firefox browsers.

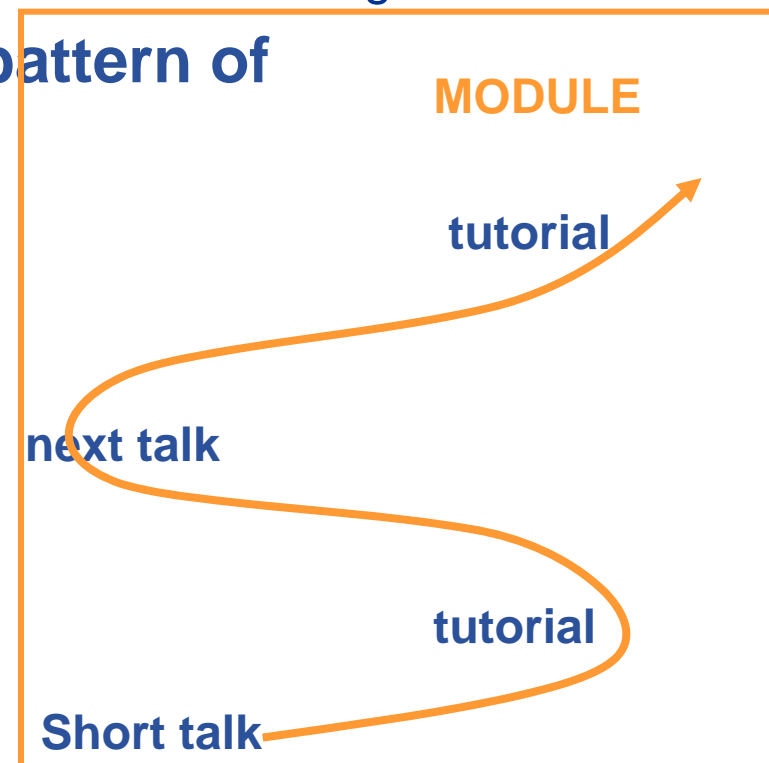
- **Plans being formed at present**
- **Deploying Agendmaker in Edinburgh**
- **Enables closer coupling of**
 - Agendmaker
 - Digital Library
 - Events database
- **Consequence**
 - Procedures will become more friendly to use
 - Easier to coordinate
 - Use of DL
 - Entry of event information – before and after
 - Generation of report statistics

Editorial Task Force

- **The goal of the Editorial Task Force is to collate and select material that is of particular value for trainers preparing future courses**
 - Generic to EGEE training
 - i.e. not concerned with federation-specific training
 - **NOT** saying “you must use this”!!!!!!
 - **NOT** a centralised provider of new material !!
- **ETF is 4 people seeking to catalyse, coordinate wider effort**
- **Current focus**
 - Achieving initial goals whilst establishing its procedures
 - **YOU need to tell us about new material!!! – use the ETF wiki or email**
 - Initial selection of “exemplars”
 - induction material
 - Collating material for application developer courses
 - Will soon add sys admin & installation material
- **For information see <http://www.egee.nesc.ac.uk/NA3ETF/>**

- **Goal: for NA3 to maximise benefit and minimise unnecessary effort – through re-use of material**
- **Modules are more re-useable than complete courses**
 - Compose courses from modules
 - Intro to information system
 - Using GFAL
 - Using RGMA
 - RGMA for monitoring applications
 - Contexts vary
 - Between federations
 - Between participants – some courses are for one VO, ...
 - Time available varies
- **Editorial Task Force seeks to facilitate this**

- **Minimise talking! More tutorials!**
 - Especially where a language isn't fluently shared by trainers and participants!
 - More is learnt from doing than listening!
 - Training: is teaching people how to do something – so do it!
- **For each module, seeking a pattern of**
 - Introduce key ideas
 - Use them in practical
 - More detailed description
 - More practical...
- **Avoid**
 - Death by powerpoint
 - Then long practicals!



- **Moved from a speaker-led model to web-page lead**
 - Accommodates different speeds of typing, learning
 - Allows URLs to background information to be explored
 - Fast participants can do more advanced optional exercises
- **MUCH less stressful for participants...**
 - Not struggling to keep up
 - Written English is sometimes more fluent than spoken
- **... and less demanding for trainers**
 - Less needs to be remembered or said!
- **Tending to create practicals in pattern of:**
 - Simple “follow this” to learn concepts
 - Then increasing levels of challenge if time permits
- **See examples from ETF page, via NA3 home page**

- **EGEE Digital Library:** <http://egee.lib.ed.ac.uk>
 - Development details and background:
 - <http://wiki.nesc.ac.uk/read/egee-elearning/>
 - Contact:
 - Boon Low, boon.low@ed.ac.uk
- **Editorial Task Force**
 - <http://www.egee.nesc.ac.uk/NA3ETF/>
 - Contact: Mike Mineter: mjm@nesc.ac.uk

- **Use the EGEE Digital Library**
 - To access material
 - Upload new material
 - Comment on material
- **Help the ETF maintain lists of current exemplar material**
 - Use wiki
 - Email etf
- **Application developer courses**
 - Needs new modules – what???
 - APIs – see GILDA wiki
 - Higher level tools – need simple examples, of e.g. GANGA
 - Use ETF wiki (at present) to gather material, ideas for these