



KnowARC

**knowARC –
applications for industry, medical
organizations, and bioinformatics research**

*EGEE conference
Geneva, September 26, 2006*

Henning Müller



- ✦ My background
- ✦ **Problems** with grids for a non expert user
- ✦ **Needs** for users in various domains
 - ❖ Industry
 - ❖ Bioinformatics research
 - ❖ Medical/large administrations
- ✦ KnowARC **goals**
- ✦ Conclusions

My background



KnowARC

✦ Work at the interface of **hospitals** and **University**



- ❖ **Research** in image processing/image analysis/image information retrieval
 - ❖ No dedicated research computing infrastructure (only desktops)
- ## ✦ BUT: Large infrastructure is available
- ❖ **~6000 computers** in the hospitals
 - ❖ How to get access to this infrastructure

Our problems with grid use



KnowARC

- ✚ For a **non expert** user!
- ✚ Maintaining an infrastructure is expensive
 - ❖ Computers and software maintenance
- ✚ Adapting/griddifying software is expensive
 - ❖ Particularly when pre-defined applications are used (Insight toolkit, Matlab, ...)
- ✚ Often grid middleware is invasive
 - ❖ Impossible to reuse an existing infrastructure
- ✚ System administrators are not always aware of possibilities and problems



- ✦ Application areas with varying needs
 - ❖ Less-traditional application areas
- ✦ Applications in **industry**
 - ❖ Science and computing
- ✦ Application in basic **research**
 - ❖ Bioinformatics University of Lübeck, Germany
- ✦ Application in large **organizations**
 - ❖ University and hospitals of Geneva



- ✚ Science + computing
- ✚ Service provider for industry
 - ❖ Automotive, ...
- ✚ **Production-quality** middleware
 - ❖ Stable, easy to use, graphical interfaces, maintainable without experts

Application basic research



KnowARC



- ✚ Bioinformatics University of Lübeck
- ✚ Often, a well **defined workflow** exist
 - ❖ Often not in typical batch processing
- ✚ Repetitive tasks can be improved strongly with computing infrastructure
 - ❖ Often some infrastructures are available but not shared
- ✚ Treatment of larger datasets improves knowledge discovery



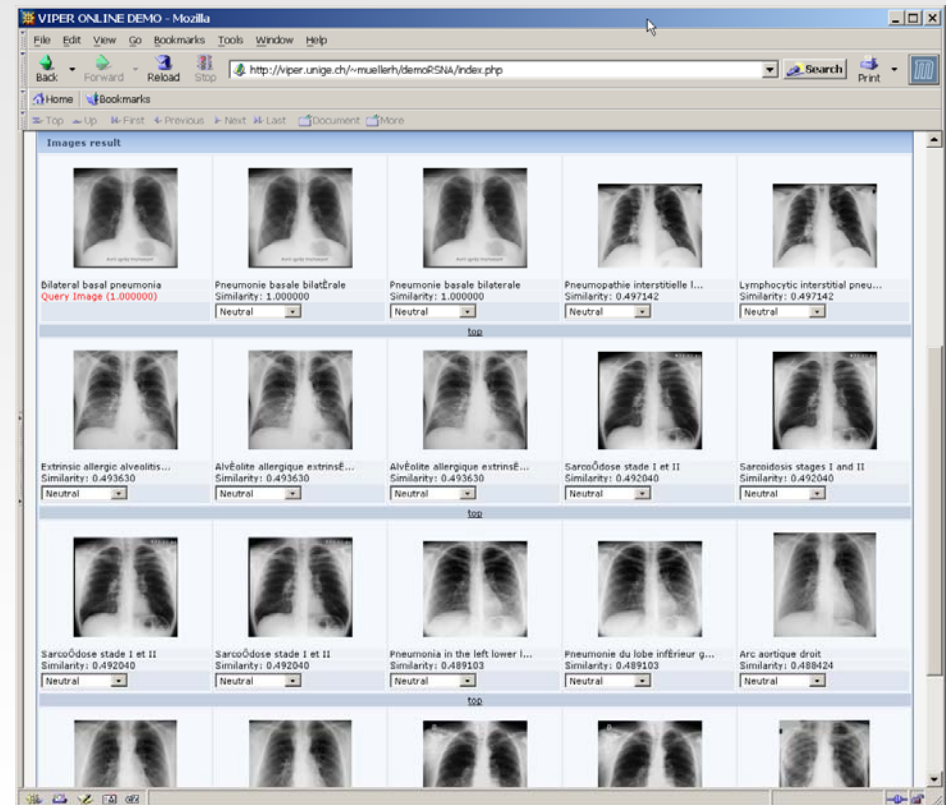
- ✦ Many **administrations** have similar characteristics
 - ❖ Very heterogeneous set of computers is available (6000 in Geneva, 1-5 years old)
 - ❖ Independent entities
 - ❖ Research is not the priority
 - But could profit from resources
 - ❖ Security is main motivation
 - ❖ Politics more important than technical issues
 - ❖ **Windows** infrastructure, although research is Windows/Linux/MacOS

Application Image Retrieval



KnowARC

- ✚ Fairly easy to griddify
- ✚ Allows **new approaches**
 - ❖ Local interest points, ...
- ✚ Limited computing limits techniques
- ✚ 40'000 images produced per day





- ✚ Make grid middleware easier accessible to non-experts
 - ❖ Little maintenance
 - ❖ Non-invasive
 - ❖ Graphics user interfaces
 - ❖ Virtualizations, accessible under Windows
 - XEN, Damn Small Linux, ...
 - ❖ ...
- ✚ Identify problems of domain experts with the middleware and include these into the design
 - ❖ Surveys, ...



- ✦ Goal of KnowARC is to make grid middleware **easily usable** and maintainable
 - ❖ Interfaces, installation, adaptation
 - ❖ Include various domains into the middleware design (industry, research, administrations)
- ✦ Our goal is to better use our current infrastructure
 - ❖ No investments
 - ❖ Acquire knowledge on griddification
 - ❖ Develop new research approaches