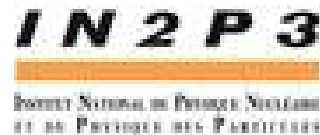




DESIGNER, INTEGRATOR & OPERATOR OF MISSION CRITICAL SYSTEMS

# CNES intranet Grid prototype based on gLite

*Joel COURQUET - Project Manager CS SI*



# Objectives

DESIGNER, INTEGRATOR & OPERATOR OF MISSION CRITICAL SYSTEMS

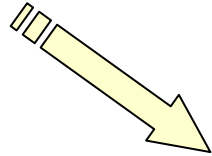
- Explore and experiment the Grid technology implemented in EGEE (gLite middleware and high level services),
- Preliminary analysis of Users needs,
- Applications and Security requirements from CNES high level security requirements
- Target architecture proposal
- Implementation of Grid prototype



# Gridification de Chistera : **Synoptique de la chaîne THR**

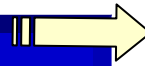
DESIGNER, INTEGRATOR & OPERATOR OF MISSION CRITICAL SYSTEMS

Génération produit intermédiaire



- Une chaîne intégrée au sein du **Serveur de Despatialisation**

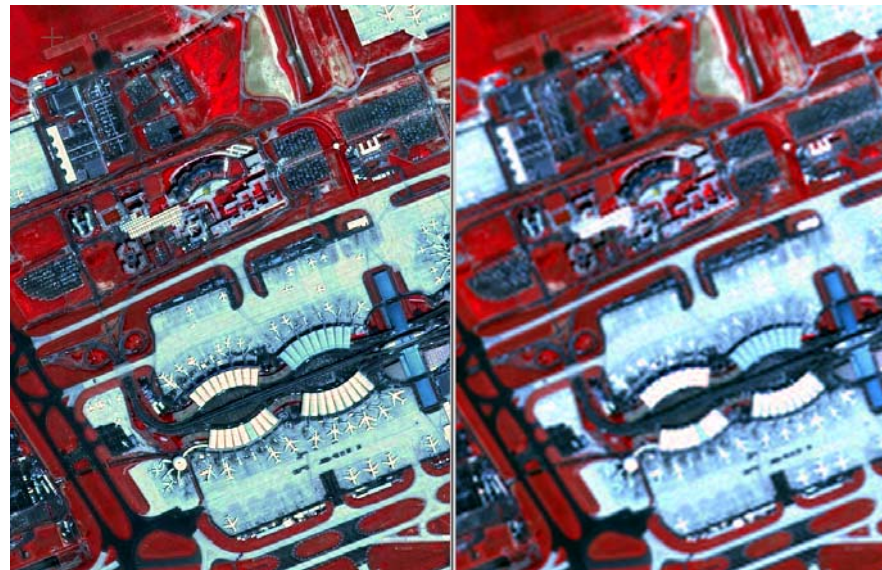
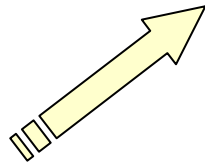
**CHISTERA production**



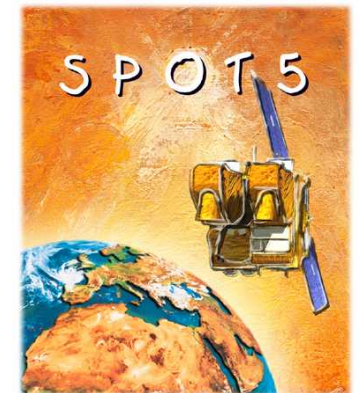
Génération produit THR



Génération produit intermédiaire

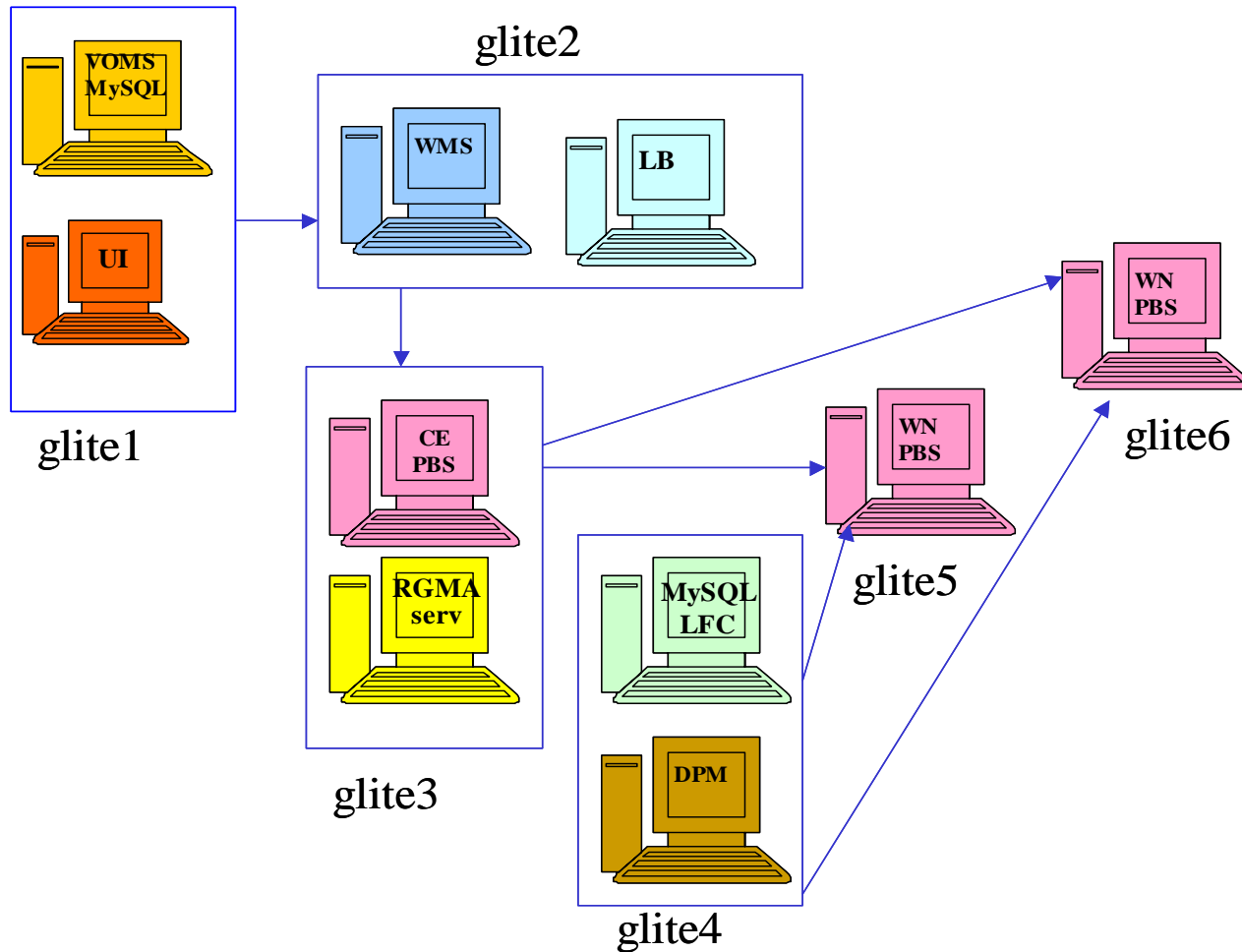


THX/HX comparison



# CNES intranet Grid prototype based on gLite

DESIGNER, INTEGRATOR & OPERATOR OF MISSION CRITICAL SYSTEMS



- **Glite 1**
  - 1 VOMS
  - 1 UI
- **Glite 2**
  - 1 WMS
  - 1 LB
- **Glite 3**
  - 1 CE
  - 1 R-GMA
- **Glite 4 :**
  - LCG Catalog
  - DPM Server
- **Glite 5 : 1WN**
- **Glite 6 : 1 WN**

# CNES intranet Grid prototype based on gLite

DESIGNER, INTEGRATOR & OPERATOR OF MISSION CRITICAL SYSTEMS

- **What are the gLite functionalities that are important for your application?**
  - Security administration
  - Complex Workflow
  - Robust services
- **What are the features missing in gLite?**
  - A more detailed security policy for VO and resources
  - the compliance of gLite with heterogeneous worker nodes
  - A Quattor like package for the installation and the management of the grid



# CNES intranet Grid prototype based on gLite

DESIGNER, INTEGRATOR & OPERATOR OF MISSION CRITICAL SYSTEMS

- **Will you use an external testbed or will you prefer to use EGEE resources?**
  - **In discussion**
- **Needs for training and support**
  - Configurations parameters
  - An on line acces to FAQ
- **Any other points for the discussion at the end of the session**
  - Rodmap of EGEE-II (availability and contents of new services)

