


PPS RP rotation EYETS 24/25 update (31.1.2025)

CERN
Esplanade des Particules 1
P.O. Box
1211 Geneva 23 - Switzerland

 **LHC**

EDMS NO.	REV.	VALIDITY
2045055	0.1	DRAFT

REFERENCE
LHC-XRP-EC-0021

Based on template: EDMS 1271880

Date: 2024-11-25

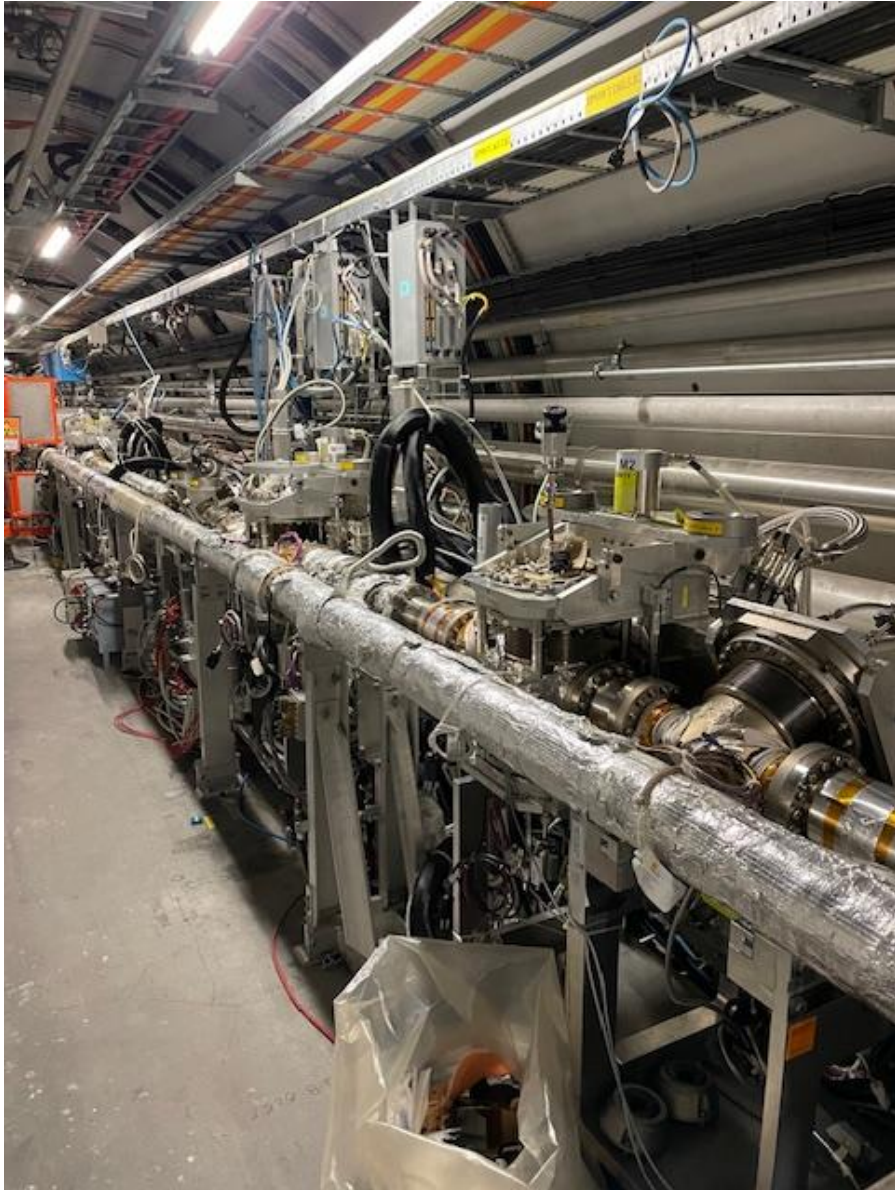
ENGINEERING CHANGE REQUEST

Rotation of PPS Roman Pots to Adapt to Vertical Beam Crossing in IP5

BRIEF DESCRIPTION OF THE PROPOSED CHANGE(S):
This document describes a mechanical rotation of the horizontal XRP stations by 27° clockwise with respect to the axis of the beam tube (looking from IP5 towards the XRP) due to a change of the collision plane requested by the LHC management

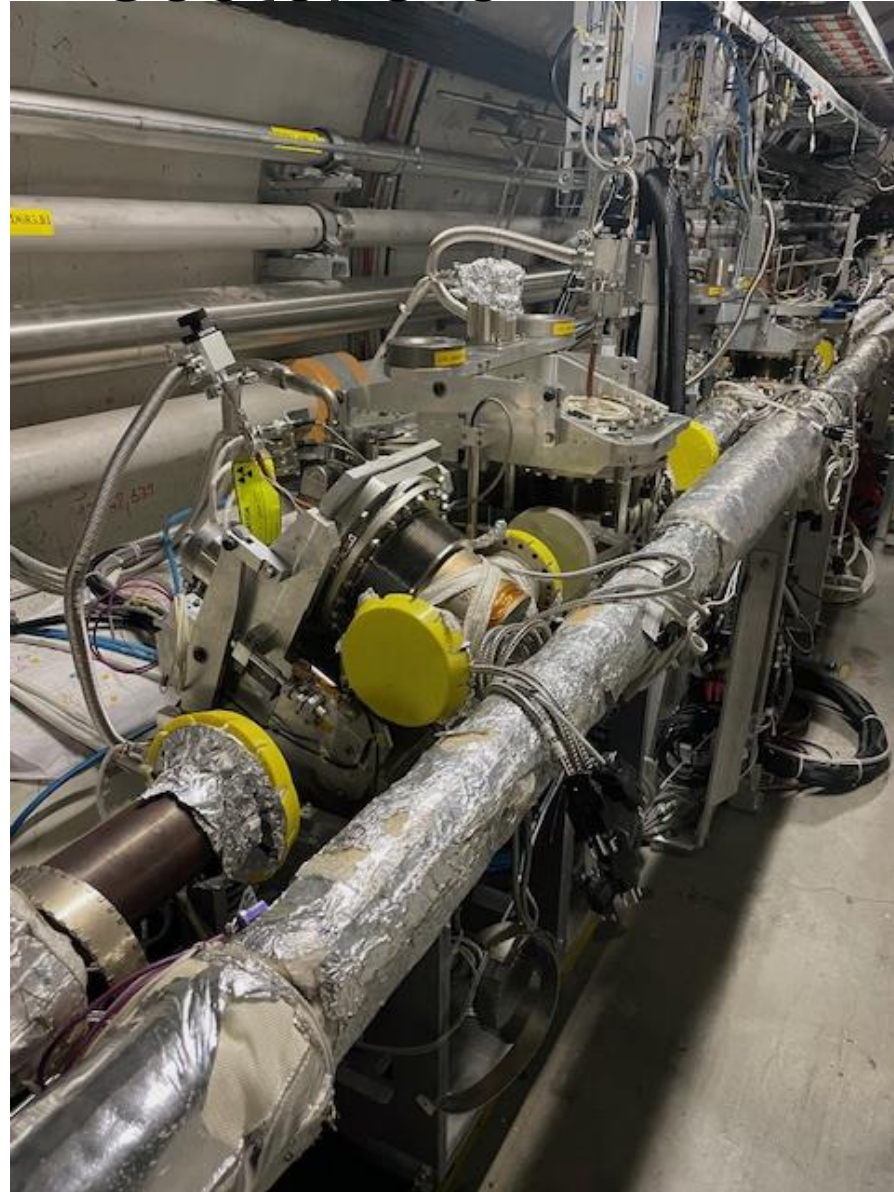
- All horizontal RPs:
 - are rotated
 - movement cycles performed (50 per pot)
 - RP stations aligned
 - sector 45: vacuum in beam line starts today
 - sector 56: vacuum scheduled for next week

Sector 4-5

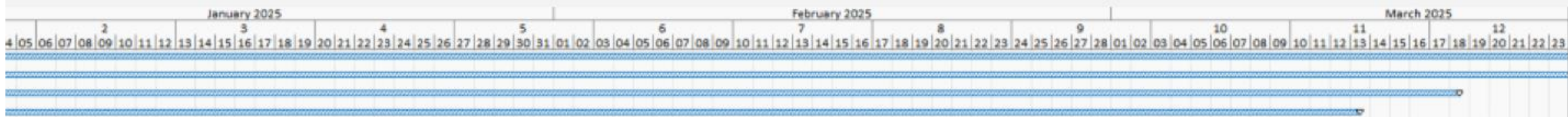


31.01.2025

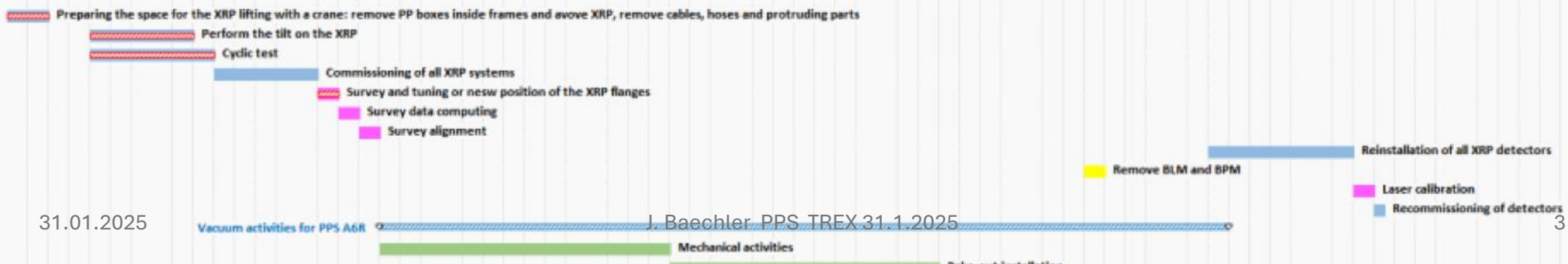
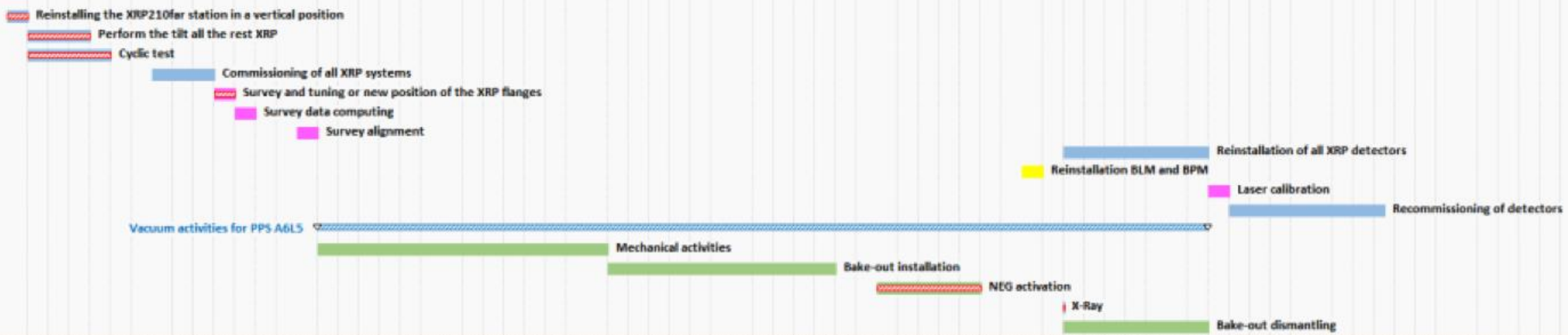
Sector 5-6



J. Baechler PPS TREX 31.1.2025



* boxes inside frames and above XRP, remove cables, hoses and protruding parts



conclusions

- RP system in LHC tunnel ready for follow up activities (ECR)
- possible reschedule
- Detector Packages are under service work