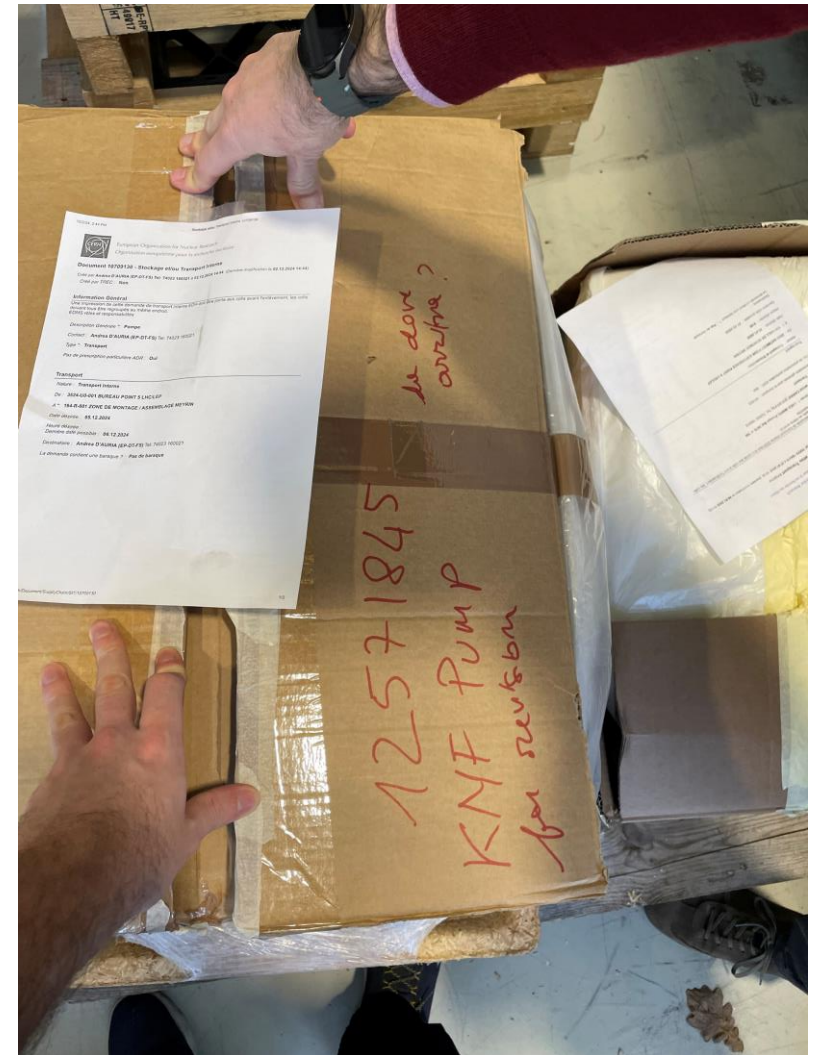


DO NOT EDIT					TO EDIT				
Location		Type	Working hours limit	Model	CERN No.	SN	EDMS		
SPARE	KNF	KNF	2500	PJ 20504-0150.1.2.12	HCXGMP001-KF400043	OK 1735954	OK	<a href="https://edms.cern.ch/document/1002254/1">https://edms.cern.ch/document/1002254/1</a>	OK
SPARE	KNF	KNF	2500	PJ 20504-0150.1.2.12	HCXGMP001-KF400013	OK 1735945	OK	<a href="https://edms.cern.ch/document/988626/1">https://edms.cern.ch/document/988626/1</a>	OK
SPARE	KNF	KNF	2500	PJ 20504-0150.1.2.12	HCXGMP001-KF400048	OK 6275681	OK	<a href="https://edms.cern.ch/document/1308042/1">https://edms.cern.ch/document/1308042/1</a>	OK
SPARE	Stock 164	KNF	2500	PJ 20504-0150.1.2.12	HCXGMP001-KF400055	OK 20048186	OK	<a href="https://edms.cern.ch/document/3202594/1">https://edms.cern.ch/document/3202594/1</a>	OK
SPARE	Stock 164	KNF	2500	PJ 20505-0150.12	HCXGMP001-KF400018	OK 3473989	OK	<a href="https://edms.cern.ch/document/1032815/1">https://edms.cern.ch/document/1032815/1</a>	OK
SPARE	KNF	KNF	2500	PJ 20505-0150.12	HCXGMP001-KF400031	OK 1735956	OK	<a href="https://edms.cern.ch/document/984734/2">https://edms.cern.ch/document/984734/2</a>	OK
TEST	Stock 164	KNF	N/A	PJ 32710-0150.0.12	HCXGMP001-KF400060	OK 14534135	OK	<a href="https://edms.cern.ch/document/3206734/1">https://edms.cern.ch/document/3206734/1</a>	OK
N/A	Stock 164	KNF	2400	PJ 32012-0150.12	HCXGMP001-KF400051	OK 12571844	OK	<a href="https://edms.cern.ch/document/3202590/1">https://edms.cern.ch/document/3202590/1</a>	OK
N/A	Stock 164	KNF	2400	PJ 32012-0150.12	HCXGMP001-KF400052	OK 14721263	OK	<a href="https://edms.cern.ch/document/3202591/1">https://edms.cern.ch/document/3202591/1</a>	OK
ATLAS	RPC 4101	KNF	2500	PJ 20504-0150.1.2.12	HCXGMP001-KF400028	OK 10552041	OK	<a href="https://edms.cern.ch/document/1832036/1">https://edms.cern.ch/document/1832036/1</a>	OK
ATLAS	RPC 4201	KNF	2500	PJ 20504-0150.1.2.12	HCXGMP001-KF400049	OK 6078928	OK	<a href="https://edms.cern.ch/document/1308050/1">https://edms.cern.ch/document/1308050/1</a>	OK
ATLAS	RPC 4301	KNF	2500	PJ 20504-0150.1.2.12	HCXGMP001-KF400019	OK 1735946	OK	<a href="https://edms.cern.ch/document/980969/2">https://edms.cern.ch/document/980969/2</a>	OK
ATLAS	TGC 4101	KNF	2200	PJ 27403-N0150.1.2ST.12E Ex	HCXGMP001-KF400038	OK 7036938	OK	<a href="https://edms.cern.ch/document/1515242/1">https://edms.cern.ch/document/1515242/1</a>	OK
ATLAS	TGC 4201	KNF	2200	PJ 27403-N0150.1.2ST.12E Ex	HCXGMP001-KF400046	OK 9980482	OK	<a href="https://edms.cern.ch/document/1796733/1">https://edms.cern.ch/document/1796733/1</a>	OK
ATLAS SPARE	Stock SGX1	KNF		PJ 27403-N0150.0.2ST.12E Ex	HCXGMP001-KF400035	OK 7036937	OK	<a href="https://edms.cern.ch/document/1503044/1">https://edms.cern.ch/document/1503044/1</a>	OK
ATLAS	TRT 4101	KNF	5000	PJ 26375-0150.12 50 nI/min (SPECIAL)	HCXGMP001-KF400033	OK 1735958	OK	<a href="https://edms.cern.ch/document/980964/2">https://edms.cern.ch/document/980964/2</a>	OK
ATLAS	TRT 4201	KNF	5000	PJ 26375-0150.12 50 nI/min (SPECIAL)	HCXGMP001-KF400040	OK 1735960	OK	<a href="https://edms.cern.ch/document/984591/1">https://edms.cern.ch/document/984591/1</a>	OK
ATLAS SPARE	Stock SGX1	KNF		PJ 26375-0150.12 50 nI/min (SPECIAL)	HCXGMP001-KF400042	OK 10595618	OK	<a href="https://edms.cern.ch/document/3202600/1">https://edms.cern.ch/document/3202600/1</a>	OK
CMS	DT 4101	KNF	2300	PJ 20504-0150.1.2.12	HCXGMP001-KF400057	OK 20048187	OK	<a href="https://edms.cern.ch/document/3206126/1">https://edms.cern.ch/document/3206126/1</a>	OK
CMS	DT 4201	KNF	2300	PJ 20504-0150.1.2.12	HCXGMP001-KF400012	OK 1735948	OK	<a href="https://edms.cern.ch/document/984216/1">https://edms.cern.ch/document/984216/1</a>	OK
CMS	DT 4301	KNF	2300	PJ 20504-0150.1.2.12	HCXGMP001-KF400014	OK 1735951	OK	<a href="https://edms.cern.ch/document/988432/1">https://edms.cern.ch/document/988432/1</a>	OK
CMS	RPC 4101	KNF	2400	PJ 20504-0150.1.2.12	HCXGMP001-KF400032	OK 1735949	OK	<a href="https://edms.cern.ch/document/986706/1">https://edms.cern.ch/document/986706/1</a>	OK
CMS	RPC 4201	KNF	2400	PJ 20504-0150.1.2.12	HCXGMP001-KF400004	OK 1735953	OK	<a href="https://edms.cern.ch/document/1063779/1">https://edms.cern.ch/document/1063779/1</a>	OK
CMS	RPC 4301	KNF	2400	PJ 20504-0150.1.2.12	HCXGMP001-KF400041	OK 3146487	OK	<a href="https://edms.cern.ch/document/1002096/1">https://edms.cern.ch/document/1002096/1</a>	OK
CMS	CSC 4101	KNF	2500	PJ 20504-0150.1.2.12	HCXGMP001-KF400023	OK 1735950	OK	<a href="https://edms.cern.ch/document/982894/1">https://edms.cern.ch/document/982894/1</a>	OK
CMS	CSC 4201	KNF	2500	PJ 20504-0150.1.2.12	HCXGMP001-KF400034	OK 1735952	OK	<a href="https://edms.cern.ch/document/985614/1">https://edms.cern.ch/document/985614/1</a>	OK
CMS	CSC 4301	KNF	2500	PJ 20504-0150.1.2.12	HCXGMP001-KF400020	OK 1735947	OK	<a href="https://edms.cern.ch/document/984246/1">https://edms.cern.ch/document/984246/1</a>	OK
CMS	GEM 4101	KNF	2400	PJ 32012-0150.12	HCXGMP001-KF400058	OK 8451260	OK		
CMS	GEM 4201	KNF	2400	PJ 32012-0150.12	HCXGMP001-KF400059	OK 8363591	OK		
CMS SPARE	=> KNF	KNF		PJ 32012-0150.12	HCXGMP001-KF400053	OK 12571845	OK	<a href="https://edms.cern.ch/document/3202592/1">https://edms.cern.ch/document/3202592/1</a>	OK
LHCb	Rich2 4101	KNF	2400	PJ 20504-0150.1.2.12	HCXGMP001-KF400016	OK 1735944	OK	<a href="https://edms.cern.ch/document/1168317/1">https://edms.cern.ch/document/1168317/1</a>	OK
LHCb	Rich2 4201	KNF	2400	PJ 20504-0150.1.2.12	HCXGMP001-KF400021	OK 1735955	OK	<a href="https://edms.cern.ch/document/993669/1">https://edms.cern.ch/document/993669/1</a>	OK
LHCb	Muon 4101	KNF	2500	PJ 20505-0150.12	HCXGMP001-KF400011	OK 1692900	OK	<a href="https://edms.cern.ch/document/1003510/1">https://edms.cern.ch/document/1003510/1</a>	OK
LHCb	Muon 4201	KNF	2500	PJ 20505-0150.12	HCXGMP001-KF400039	OK 1735957	OK	<a href="https://edms.cern.ch/document/984743/1">https://edms.cern.ch/document/984743/1</a>	OK
LHCb	Rich1 4101	KNF	5500	PJ 25222-0150.12 Rich1 44 nI/min (SPECIAL)	HCXGMP001-KF400056	OK 20030993	OK	<a href="https://edms.cern.ch/document/3203028/1">https://edms.cern.ch/document/3203028/1</a>	OK



Pump SN: 3473989 sent to KNF for general maintenance.

DO NOT EDIT				TO EDIT			
Location		Type	Working hours limit	Model	CERN No.	SN	EDMS
SPARE	KNF	KNF	2500	PJ 20504-0150.1.2.12	HCXGMP001-KF400043	OK 1735954	OK <a href="https://edms.cern.ch/document/1002254/1">https://edms.cern.ch/document/1002254/1</a>
SPARE	KNF	KNF	2500	PJ 20504-0150.1.2.12	HCXGMP001-KF400013	OK 1735945	OK <a href="https://edms.cern.ch/document/988626/1">https://edms.cern.ch/document/988626/1</a>
SPARE	KNF	KNF	2500	PJ 20504-0150.1.2.12	HCXGMP001-KF400048	OK 6275681	OK <a href="https://edms.cern.ch/document/1308042/1">https://edms.cern.ch/document/1308042/1</a>
SPARE	Stock 164	KNF	2500	PJ 20504-0150.1.2.12	HCXGMP001-KF400055	OK 20048186	OK <a href="https://edms.cern.ch/document/3202594/1">https://edms.cern.ch/document/3202594/1</a>
SPARE	Stock 164	KNF	2500	PJ 20505-0150.12	HCXGMP001-KF400018	OK 3473989	OK <a href="https://edms.cern.ch/document/1032815/1">https://edms.cern.ch/document/1032815/1</a>
SPARE	KNF	KNF	2500	PJ 20505-0150.12	HCXGMP001-KF400031	OK 1735956	OK <a href="https://edms.cern.ch/document/984734/2">https://edms.cern.ch/document/984734/2</a>
TEST	Stock 164	KNF	N/A	PJ 32710-0150.0.12	HCXGMP001-KF400060	OK 14534135	OK <a href="https://edms.cern.ch/document/3206734/1">https://edms.cern.ch/document/3206734/1</a>
N/A	Stock 164	KNF	2400	PJ 32012-0150.12	HCXGMP001-KF400051	OK 12571844	OK <a href="https://edms.cern.ch/document/3202590/1">https://edms.cern.ch/document/3202590/1</a>
N/A	Stock 164	KNF	2400	PJ 32012-0150.12	HCXGMP001-KF400052	OK 14721263	OK <a href="https://edms.cern.ch/document/3202591/1">https://edms.cern.ch/document/3202591/1</a>
ATLAS	RPC 4101	KNF	2500	PJ 20504-0150.1.2.12	HCXGMP001-KF400028	OK 10552041	OK <a href="https://edms.cern.ch/document/1832036/1">https://edms.cern.ch/document/1832036/1</a>
ATLAS	RPC 4201	KNF	2500	PJ 20504-0150.1.2.12	HCXGMP001-KF400049	OK 6078928	OK <a href="https://edms.cern.ch/document/1308050/1">https://edms.cern.ch/document/1308050/1</a>
ATLAS	RPC 4301	KNF	2500	PJ 20504-0150.1.2.12	HCXGMP001-KF400019	OK 1735946	OK <a href="https://edms.cern.ch/document/980969/2">https://edms.cern.ch/document/980969/2</a>
ATLAS	TGC 4101	KNF	2200	PJ 27403-N0150.1.2ST.12E Ex	HCXGMP001-KF400038	OK 7036938	OK <a href="https://edms.cern.ch/document/1515242/1">https://edms.cern.ch/document/1515242/1</a>
ATLAS	TGC 4201	KNF	2200	PJ 27403-N0150.1.2ST.12E Ex	HCXGMP001-KF400046	OK 9980482	OK <a href="https://edms.cern.ch/document/1796733/1">https://edms.cern.ch/document/1796733/1</a>
ATLAS SPARE	Stock SGX1	KNF		PJ 27403-N0150.0.2ST.12E Ex	HCXGMP001-KF400035	OK 7036937	OK <a href="https://edms.cern.ch/document/1503044/1">https://edms.cern.ch/document/1503044/1</a>
ATLAS	TRT 4101	KNF	5000	PJ 26375-0150.12 50 nL/min (SPECIAL)	HCXGMP001-KF400033	OK 1735958	OK <a href="https://edms.cern.ch/document/980964/2">https://edms.cern.ch/document/980964/2</a>
ATLAS	TRT 4201	KNF	5000	PJ 26375-0150.12 50 nL/min (SPECIAL)	HCXGMP001-KF400040	OK 1735960	OK <a href="https://edms.cern.ch/document/984591/1">https://edms.cern.ch/document/984591/1</a>
ATLAS SPARE	Stock SGX1	KNF		PJ 26375-0150.12 50 nL/min (SPECIAL)	HCXGMP001-KF400042	OK 10595618	OK <a href="https://edms.cern.ch/document/3202600/1">https://edms.cern.ch/document/3202600/1</a>
CMS	DT 4101	KNF	2300	PJ 20504-0150.1.2.12	HCXGMP001-KF400057	OK 20048187	OK <a href="https://edms.cern.ch/document/3206126/1">https://edms.cern.ch/document/3206126/1</a>
CMS	DT 4201	KNF	2300	PJ 20504-0150.1.2.12	HCXGMP001-KF400012	OK 1735948	OK <a href="https://edms.cern.ch/document/984216/1">https://edms.cern.ch/document/984216/1</a>
CMS	DT 4301	KNF	2300	PJ 20504-0150.1.2.12	HCXGMP001-KF400014	OK 1735951	OK <a href="https://edms.cern.ch/document/988432/1">https://edms.cern.ch/document/988432/1</a>
CMS	RPC 4101	KNF	2400	PJ 20504-0150.1.2.12	HCXGMP001-KF400032	OK 1735949	OK <a href="https://edms.cern.ch/document/986706/1">https://edms.cern.ch/document/986706/1</a>
CMS	RPC 4201	KNF	2400	PJ 20504-0150.1.2.12	HCXGMP001-KF400004	OK 1735953	OK <a href="https://edms.cern.ch/document/1063779/1">https://edms.cern.ch/document/1063779/1</a>
CMS	RPC 4301	KNF	2400	PJ 20504-0150.1.2.12	HCXGMP001-KF400041	OK 3146487	OK <a href="https://edms.cern.ch/document/1002096/1">https://edms.cern.ch/document/1002096/1</a>
CMS	CSC 4101	KNF	2500	PJ 20504-0150.1.2.12	HCXGMP001-KF400023	OK 1735950	OK <a href="https://edms.cern.ch/document/982894/1">https://edms.cern.ch/document/982894/1</a>
CMS	CSC 4201	KNF	2500	PJ 20504-0150.1.2.12	HCXGMP001-KF400034	OK 1735952	OK <a href="https://edms.cern.ch/document/985614/1">https://edms.cern.ch/document/985614/1</a>
CMS	CSC 4301	KNF	2500	PJ 20504-0150.1.2.12	HCXGMP001-KF400020	OK 1735947	OK <a href="https://edms.cern.ch/document/984246/1">https://edms.cern.ch/document/984246/1</a>
CMS	GEM 4101	KNF	2400	PJ 32012-0150.12	HCXGMP001-KF400058	OK 8451260	OK
CMS	GEM 4201	KNF	2400	PJ 32012-0150.12	HCXGMP001-KF400059	OK 8262501	OK
CMS SPARE	=> KNF	KNF		PJ 32012-0150.12	HCXGMP001-KF400053	OK 12571845	OK <a href="https://edms.cern.ch/document/3202592/1">https://edms.cern.ch/document/3202592/1</a>
LHCb	Rich2 4101	KNF	2400	PJ 20504-0150.1.2.12	HCXGMP001-KF400016	OK 1735944	OK <a href="https://edms.cern.ch/document/1168317/1">https://edms.cern.ch/document/1168317/1</a>
LHCb	Rich2 4201	KNF	2400	PJ 20504-0150.1.2.12	HCXGMP001-KF400021	OK 1735955	OK <a href="https://edms.cern.ch/document/993669/1">https://edms.cern.ch/document/993669/1</a>
LHCb	Muon 4101	KNF	2500	PJ 20505-0150.12	HCXGMP001-KF400011	OK 1692900	OK <a href="https://edms.cern.ch/document/1003510/1">https://edms.cern.ch/document/1003510/1</a>
LHCb	Muon 4201	KNF	2500	PJ 20505-0150.12	HCXGMP001-KF400039	OK 1735957	OK <a href="https://edms.cern.ch/document/984743/1">https://edms.cern.ch/document/984743/1</a>
LHCb	Rich1 4101	KNF	5500	PJ 25222-0150.12 Rich1 44 nL/min (SPECIAL)	HCXGMP001-KF400056	OK 20030993	OK <a href="https://edms.cern.ch/document/3203028/1">https://edms.cern.ch/document/3203028/1</a>



SN:12571845

Pump SN:12571845 sent to KNF for general maintenance.



# Work order

Work Order	Status	Status Icon	Description	Standard WC	Equipment	Equipment Description	Equipment Type	Location	Dep./Service Unit	Type
34466076	T - Completed, Terminé	T - Completed, Terminé	Pump Swap		HCXGPUM001-CR300004	Pump Rack	Asset	XG01		EX - Exploitation, Operation
34465859	T - Completed, Terminé	T - Completed, Terminé	Pump's filter replacement		HCXGPMP001-KF400030	Pump	Asset	XG01		CD - Corrective - Repair
34465702	R - Launched, Lancé	R - Launched, Lancé	Send pump to manufacturer		HCXGPMP001-KF400031	Pump	Asset	XG01		CR - Corrective Repair > 2 h
34181186	T - Completed, Terminé	T - Completed, Terminé	Installation FESTO Module FE10280		HXGFGFR001-COL02	Column2	Position	XG01		CA - Corrective - Improvement
34180970	T - Completed, Terminé	T - Completed, Terminé	Installation new cooling		HXGFGFRINJ101-CH0001	Cooling Unit	Position	XG01		CA - Corrective - Improvement
34444318	T - Completed, Terminé	T - Completed, Terminé	Change membranes pump		HXGMPMP001-KF400032	Pump	Asset	XG01		CD - Corrective - Repair
34444358	T - Completed, Terminé	T - Completed, Terminé	Change membranes pump		HXGMPMP001-KF400041	Pump	Asset	XG01		CD - Corrective - Repair
34182559	T - Completed, Terminé	T - Completed, Terminé	Compressor test		HXGGPU0033-1808092	Air Driven Liquid Pump	Asset	XG01		CD - Corrective - Repair
34161288	T - Completed, Terminé	T - Completed, Terminé	Maintainance Compressor		HXGFGRCMP301-PU10001	Pump	Position	XG01		CR - Corrective Repair > 2 h
34161333	T - Completed, Terminé	T - Completed, Terminé	Compressor maintenance		HXGFGRCMP301-PU10001	Pump	Position	XG01		CR - Corrective Repair > 2 h

We are loading the Work Order for the pump, based from the eLog.

# eLogs and Work order

---

To better understand the eLog, and have a better track of data in the future, please include in the eLog the following:

1. The P&ID code of the pump e.g. pump PU4201 (no pump 1)
2. The Serial number of the pump
3. The last hour reading for the pump that goes under maintenance.

Thank you.