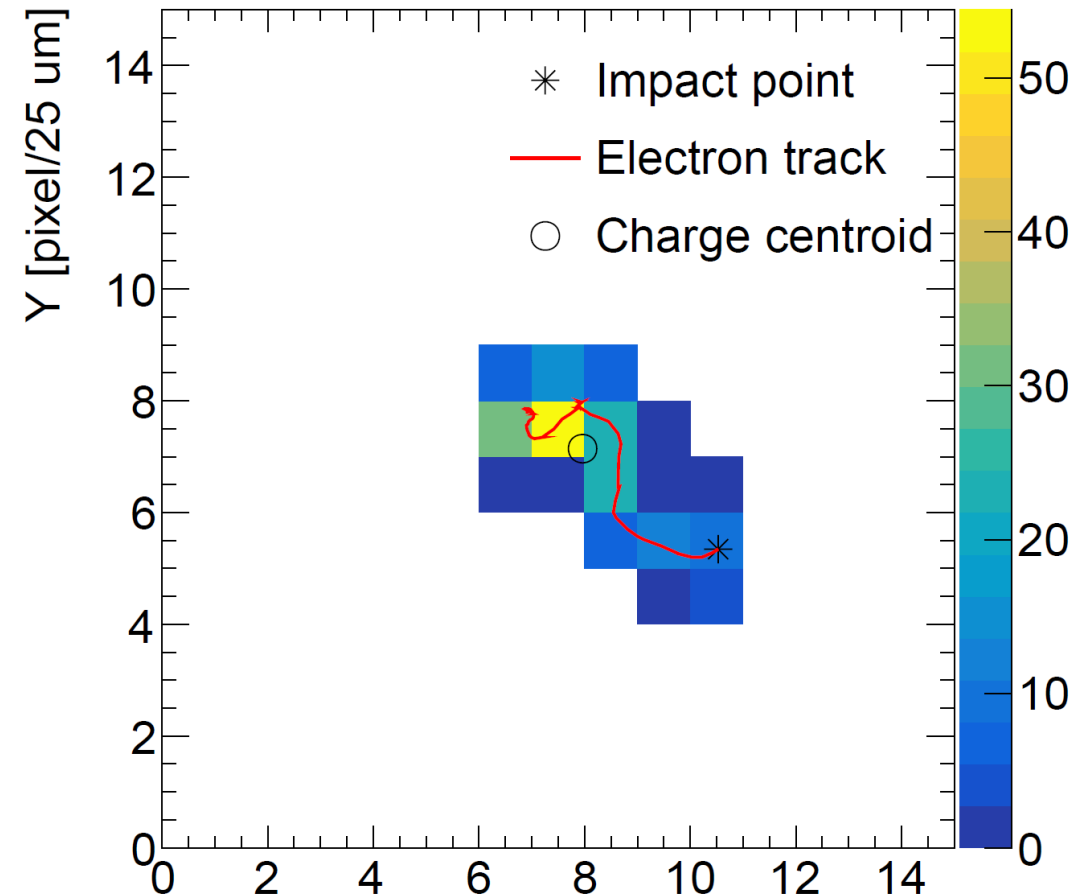


Fast ML Inference for Electron Microscopy

Semester Project in Collaboration with PSI

- **Project Goal: Real-time processing of electron microscopy data**
Optimize existing CNN model to allow deployment on FPGA
- Model Task: Predict impact point of the impinging electron from pixel charge distribution in a MÖNCH detector (developed at PSI [1])
- Current Status:
 - First attempts to reduce model size by pruning and quantization

[1] R Dinapoli *et al* 2014 *JINST* **9** C05015



X. Xie *et al* 2024 *JINST* **19** C10007