



# **SD57**

## **Integration Double Air Valve**

F. Borralho / EN-CV



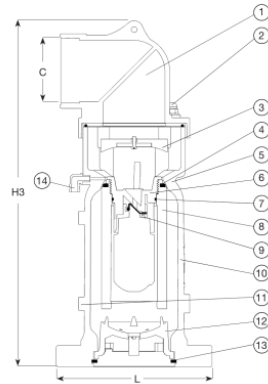
10.06.2025

## Option 1

AVK COMBINATION AIR VALVE, PN16

Flanged, body of ductile iron

701/48-011



## Component list:

1. Discharge outlet	Polyethylene	8. Air and vacuum float	PP
2. Thread rod	Stainless steel 304	9. Automatic float	PP
3. Discharge outlet seal	NBR rubber	10. Body	Ductile Iron
4. Air and vacuum seal	EPDM rubber	11. Pressure release plug	Stainless steel 316
5. Float cover	POM	12. Float lock	POM
6. O-ring	EPDM rubber	13. Snap ring	POM
7. Rolling seal	EPDM rubber	14. Drain outlet	PP

Components may be substituted with equivalent or higher class materials without prior notification.

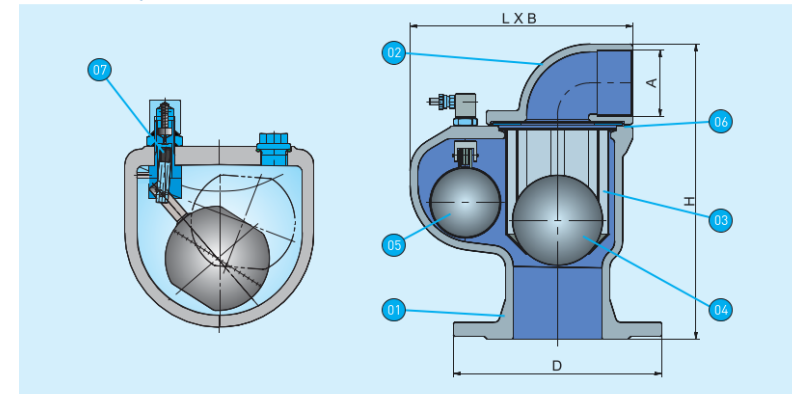
## Reference nos. and dimensions:

AVK ref. no.	DN mm	Product PN Class	H3 mm	L mm	C mm	Theoretical weight/kg
701-050-48-110034 (1)	50	PN10	222	165	1 1/2" BSP	3.9

## Option 2

Ventouse triple fonction TWINAIR®

## 2 - Dimensions et poids



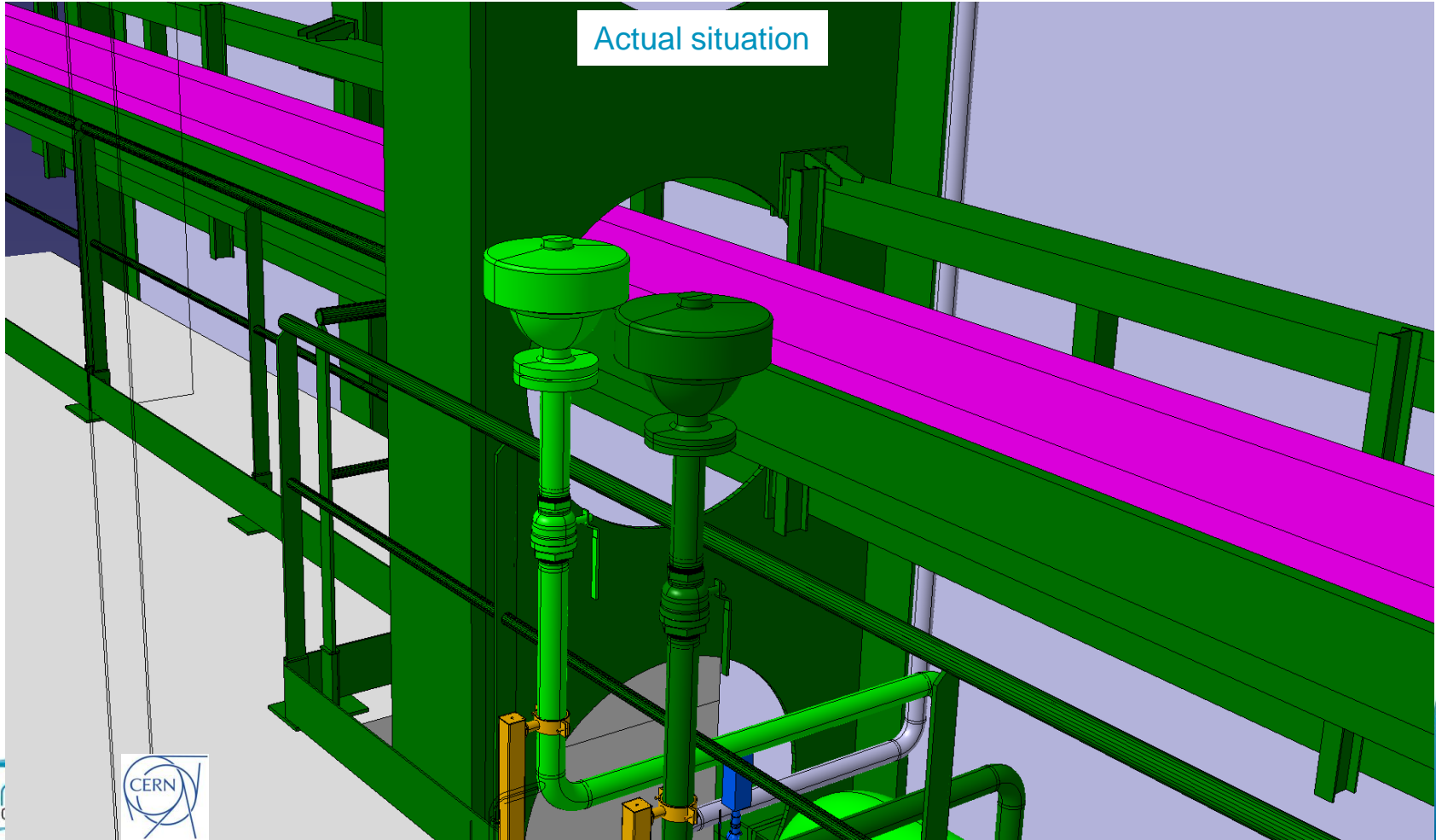
Rep.	Désignation	Nb	Matériaux	Normes
01	Corps	1	Fonte GS/EN-JS1050	NF EN 1563
02	Chapeau	1	Fonte GS/EN-JS1050	NF EN 1563
03	Panier	1	Inox 316Ti/1.4571	NF EN 10088
04	Boule principale DN 50-100	1	Composite multi-chambre	
	Boule principale DN150-200	1	Inox 316Ti/1.4571	NF EN 10088
05	Boule secondaire	1	Inox 316Ti/1.4571	NF EN 10088
06	Clapet principal	1	EPDM	
07	Clapet secondaire	1	EPDM	

DN	H	D				Longueur x Largeur L x B	Raccordement	Poids
	mm	PN 10	PN 16	PN 25	PN 40	mm	A	Kg
50	317	165	165	165	165	240x191	G2 1/2	19
80	317	200	200	200	200	240x191	G2 1/2	19

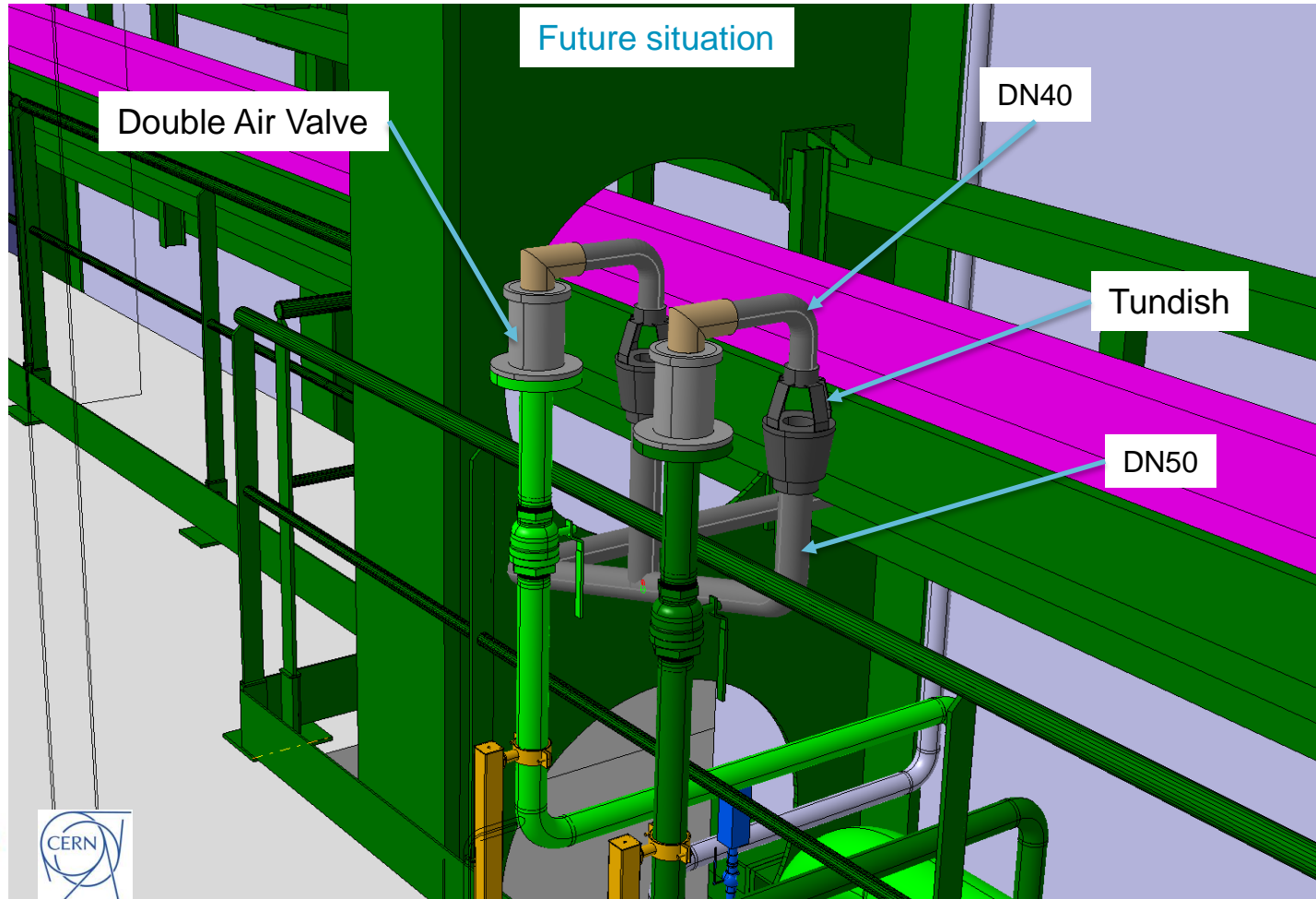
For the moment, no news from the supplier AVK (option 1) concerning the disponibilty/delivery of the part,  
For option 2, french company so easier to have the valve.

# SD57

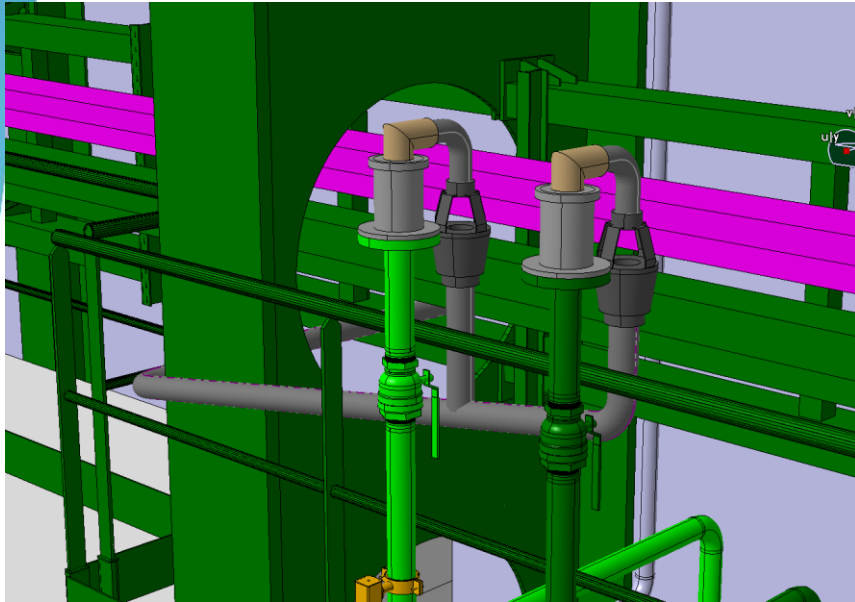
Actual situation



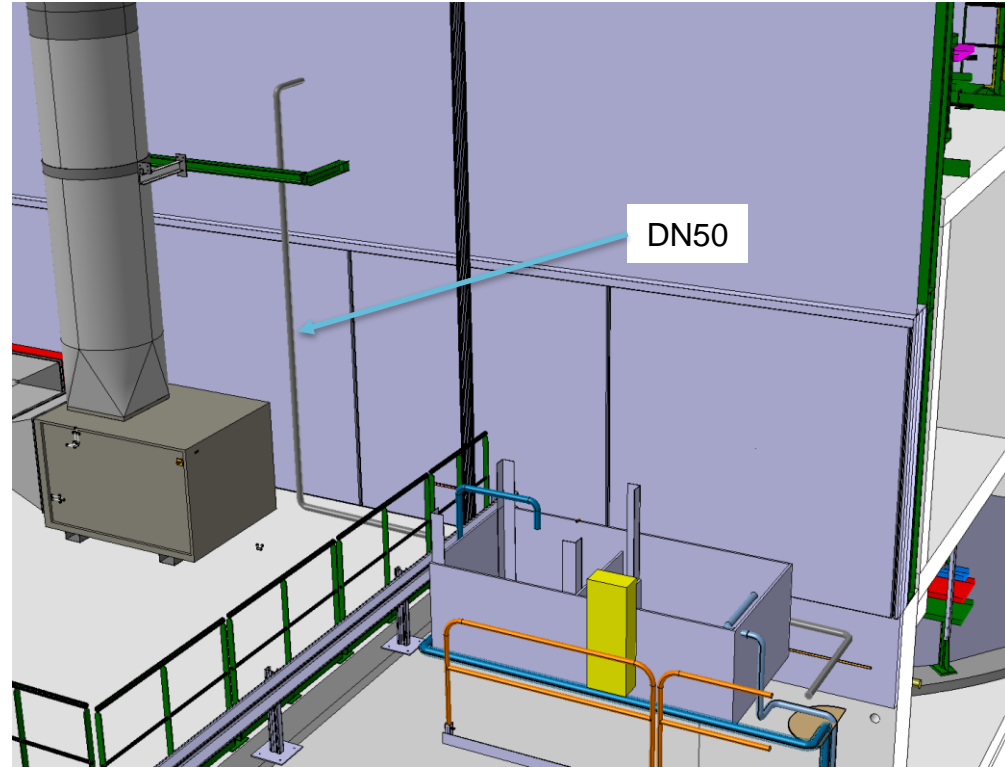
# SD57



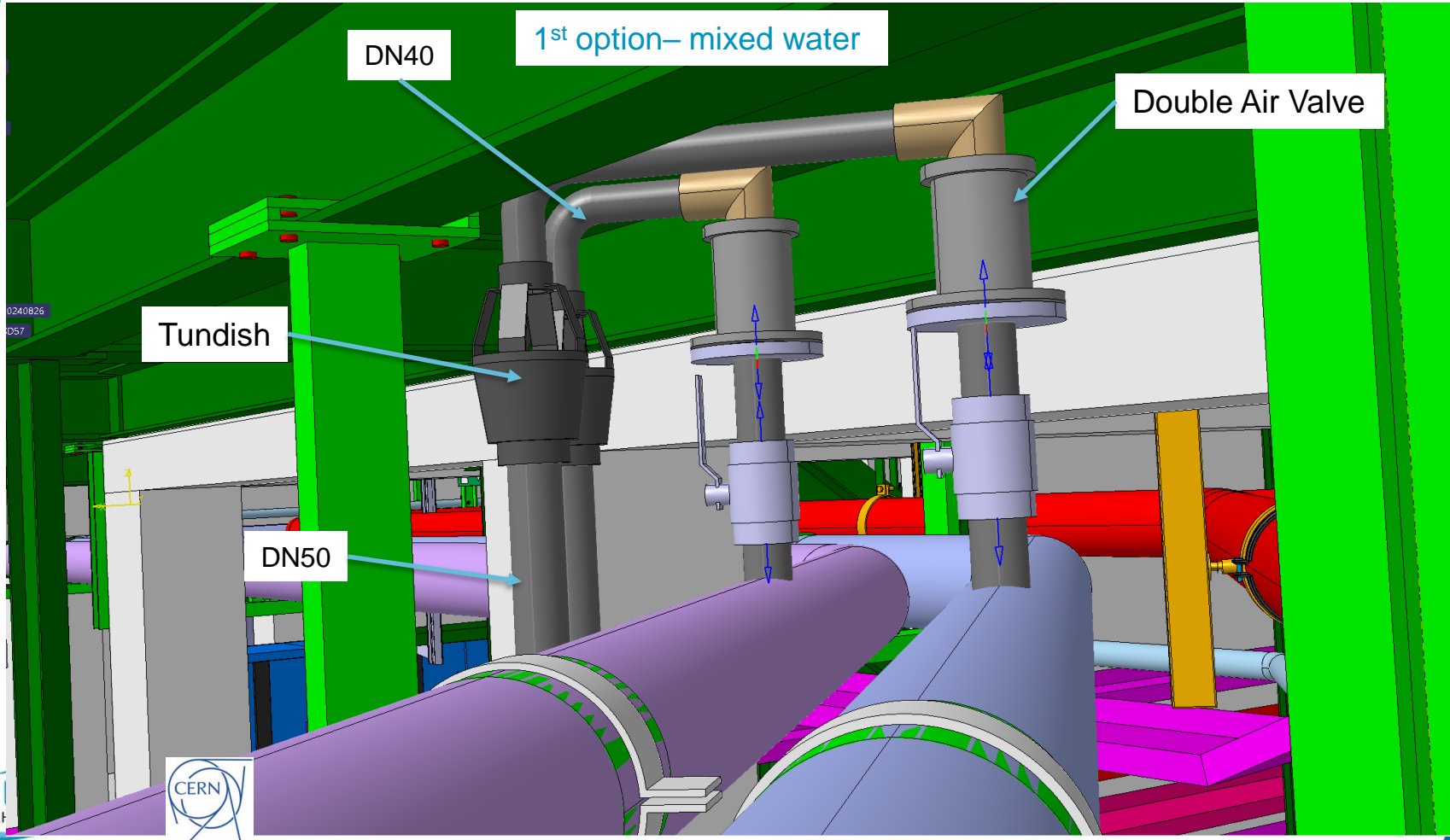
Future situation inside



Future situation outside



# SD57 – level -1

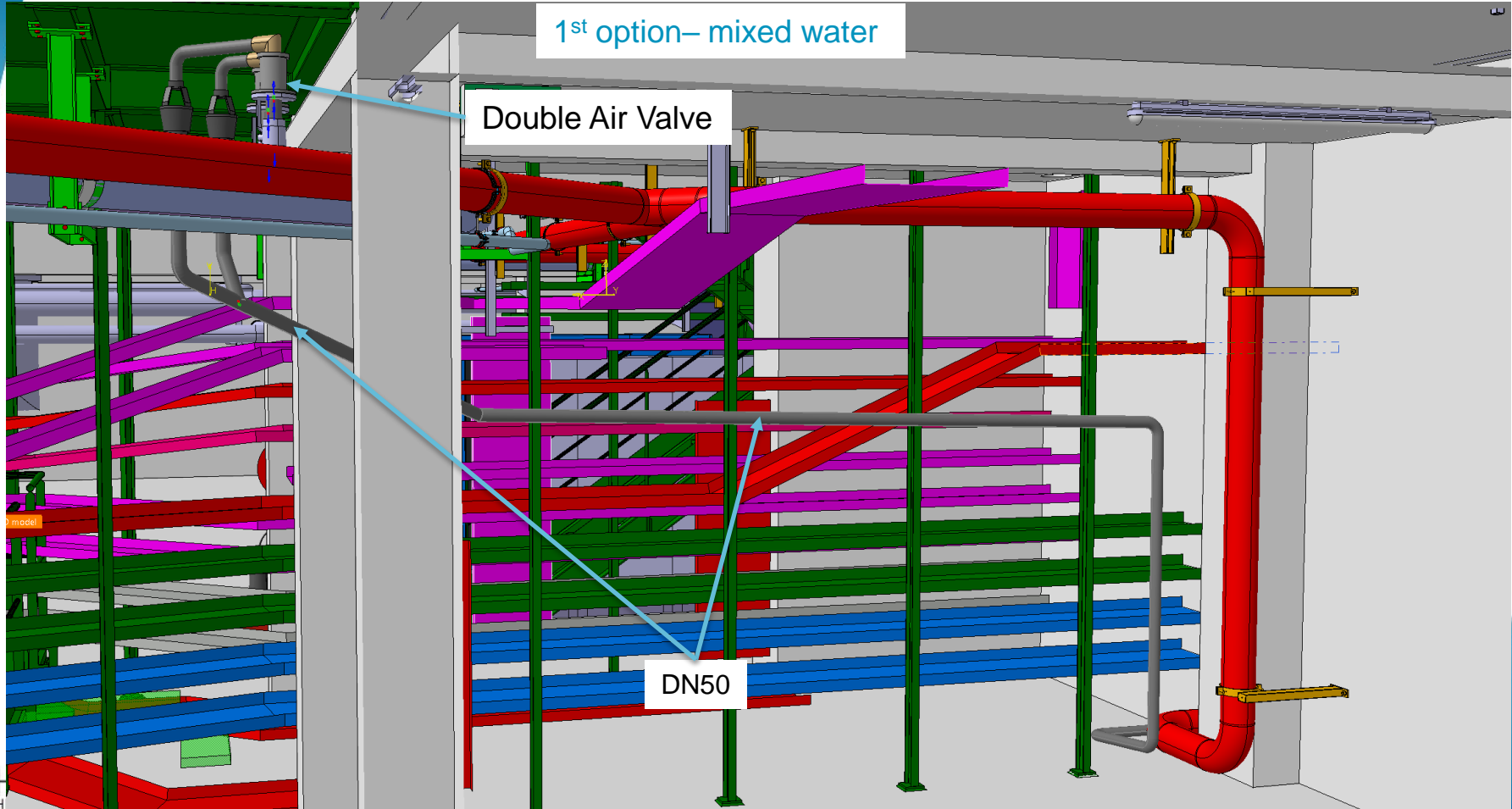


# SD57 – level -1

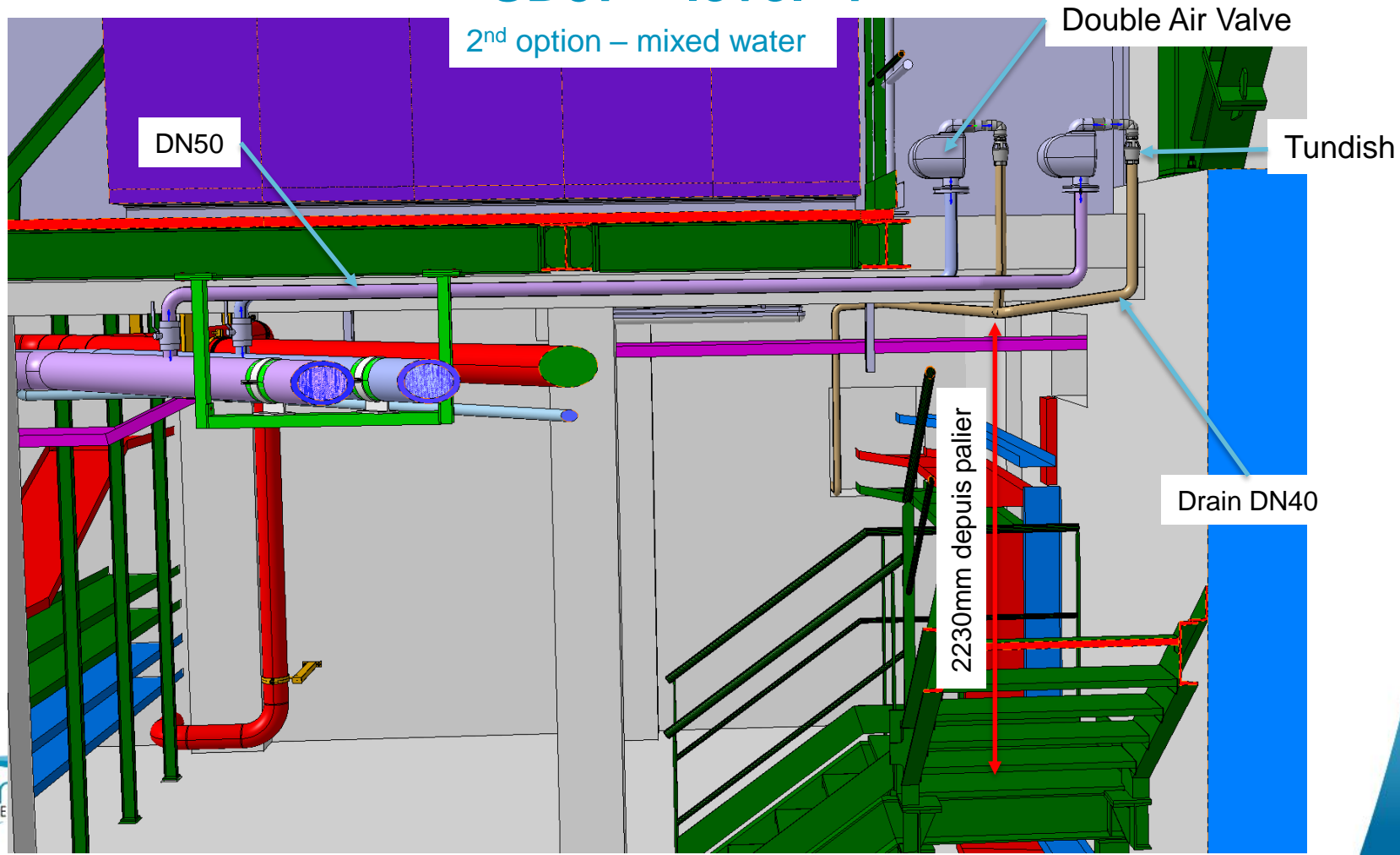
1<sup>st</sup> option– mixed water

Double Air Valve

DN50



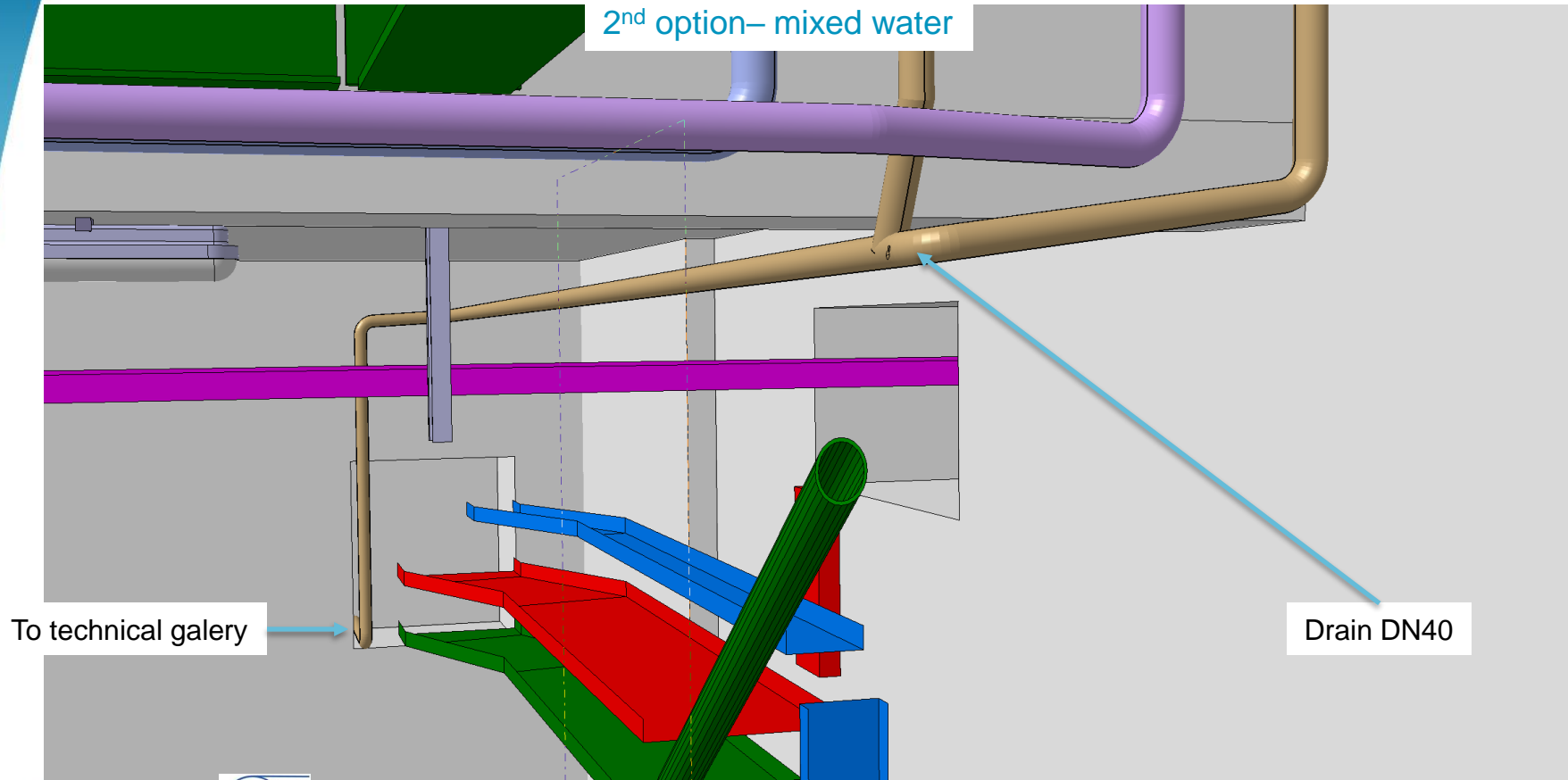
# SD57 – level -1





# SD57 – level -1

2<sup>nd</sup> option– mixed water





***Thank you!***

