



# Welcome to BNL!

Elizabeth Brost

August 11, 2025



# Wifi

- Wifi is available through [eduroam](#)
- If you can't use eduroam, it is possible to connect to the guest wifi through [Corus](#)

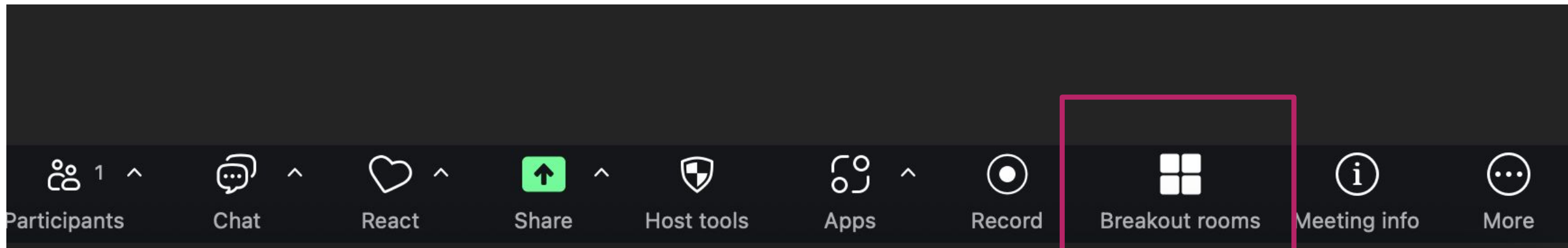


# BNL Event Code of Conduct

- **All who participate in BSA-managed events, on site at Brookhaven Lab or off, must conduct themselves in an ethical manner, demonstrating respect through common courtesy, civility, and effective communication.**
- BSA will not tolerate discrimination or harassment of any kind, including sexual harassment, bullying, intimidation, violence, threats of violence, retaliation, or other disruptive behavior.
- Anyone asked to stop behavior deemed inappropriate must comply immediately.
- If someone is in immediate risk of serious harm on site, dial 631.344.2222 from a mobile phone. From anywhere else, dial 911.
- **If inappropriate behavior is observed, notify the event coordinator as soon as possible.** Concerns may also be reported through EthicsPoint, which is hosted by an independent third party.
- Consequences may include ejection from the event without a refund, if applicable. BSA reserves the right to notify appropriate authorities and organizations such as employers, institutions, or programs.

# Logistics: speakers and zoom connection

- Speakers: please upload your slides before your talks (let me know if you have any trouble)
- Zoom: link is available from the indico page, for registered participants
- **Breakout rooms** have been created for each work package



# Workshop Venue







Front entrance  
(510 - Physics  
Building)



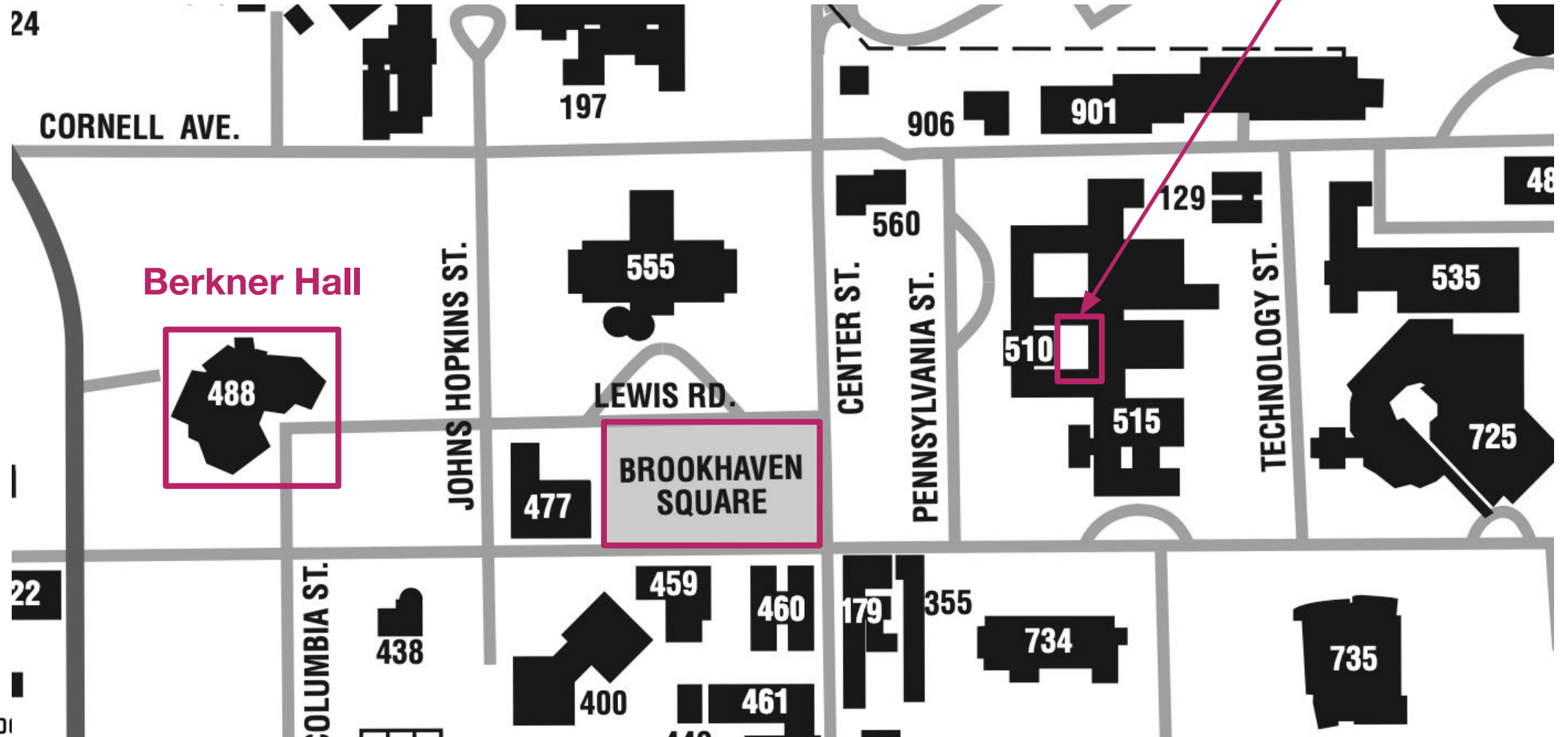
# Schedule for the week

rooms for parallel sessions to be assigned based on needs - see me this afternoon

Monday	Tuesday	Wednesday	Thursday	Friday
 travel to BNL 	Breakfast 🍞	Breakfast 🍞	Breakfast 🍞	Breakfast 🍞
	Plenary talk: Lessons Learned from Past Detectors	work / Delphes tutorial	work work work	Final presentations
	Group photo 📷	work work	Plenary talk: MC challenges	
	Lunch	Lunch	Lunch	
Intro: work packages	work work work	work work work	work work work	 travel home 
☕ Coffee ☕	☕ Coffee ☕	☕ Coffee ☕	☕ Coffee ☕	
Intro: work packages	work	Lab tours / work	Prepare final presentations	

# Finding your way around: Eating lunch outdoors

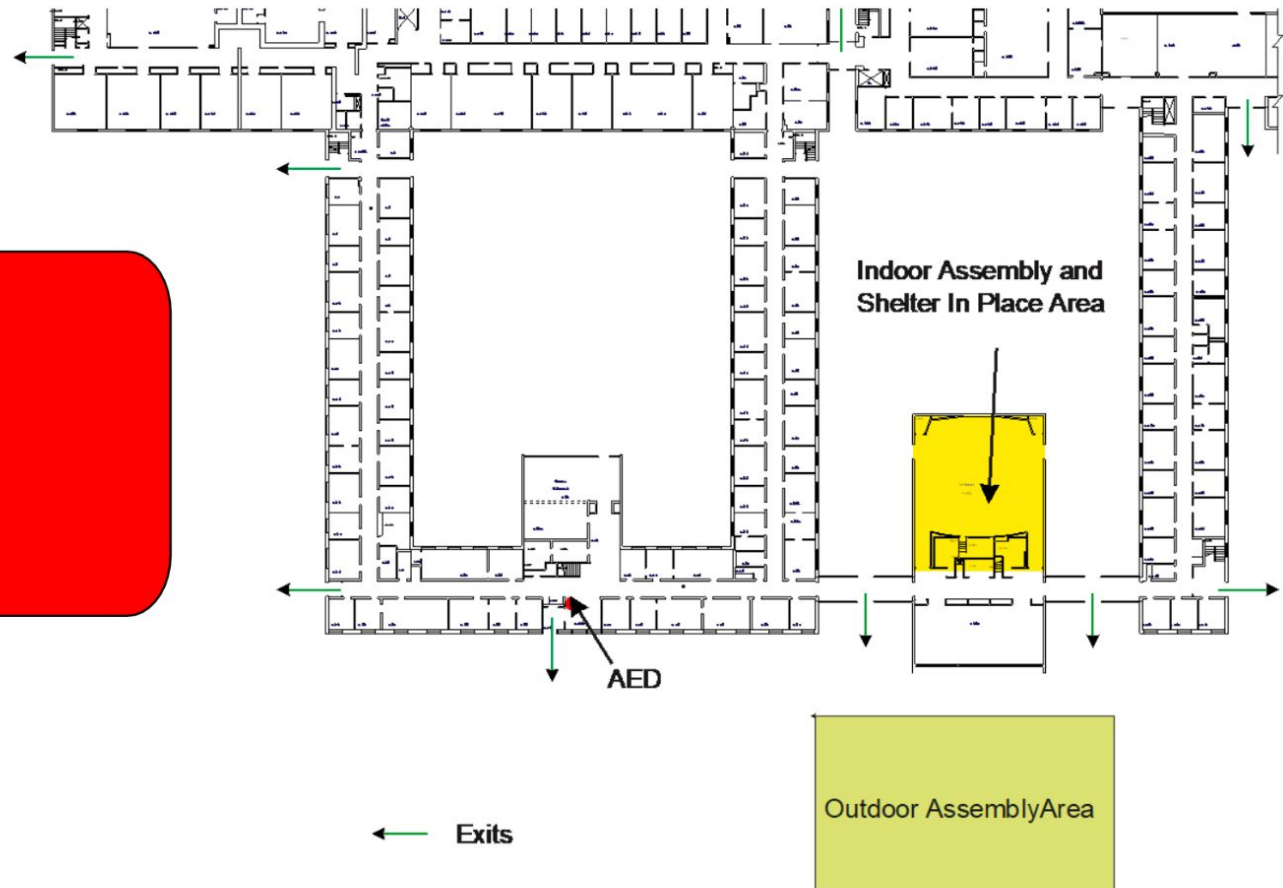
Building 510 courtyard behind  
Large Seminar Room



# In case of emergency

To Report a fire, spill, medical  
or other emergency,  
DIAL EXT. 2222 or 911

If using a cell phone,  
DIAL 631-344-2222  
If a telephone is not available,  
USE A FIRE ALARM BOX

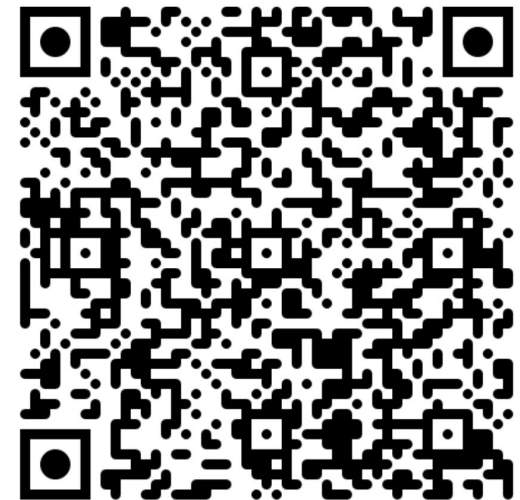


# Thanks!

**Organizing committee:** Sally Dawson, Clara Del Pio, Julia Gonski, Loukas Gouskos, Chris Rasmussen, Jennifer Roloff, Sahibjeet Singh, Robert Szafron

**Plenary speakers:** Stefan Hoeche, Charlie Young

All participants - looking forward to **workworkworking** with you this week!



# Like it here on Long Island?

**We're hiring postdocs to work in the Omega group:**

- 1) ATLAS (based at CERN): <https://inspirehep.net/jobs/2955764>
- 2) ATLAS + EIC (based at BNL): <https://inspirehep.net/jobs/2955765>

Deadlines are September 15th.

# BACKUP