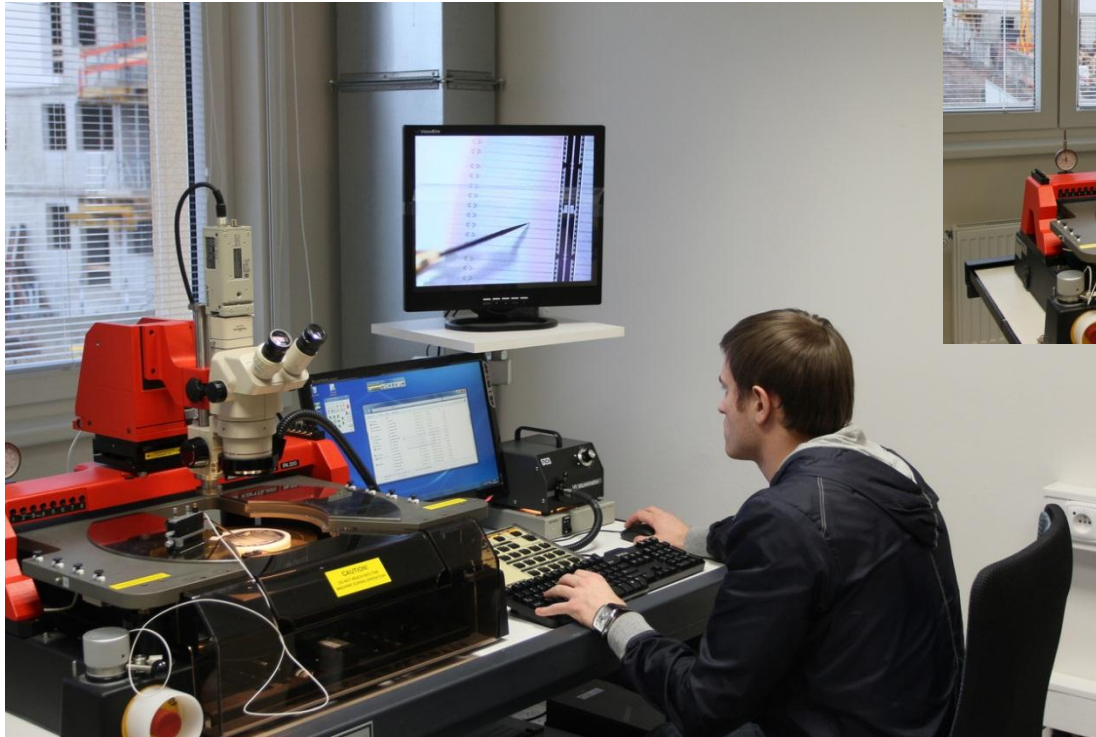


Status@Prague

- → laboratory upgrade
- → design of sensors for production submission
- → plans for near future

Laboratory upgrade

- → new rooms of 12 m² and 24 m² area, “grey” quality, but with clean workplaces equipped by flow boxes
- → refurbished Karl Suss PA-200 Probe Station: installation & commissioning



Laboratory upgrade



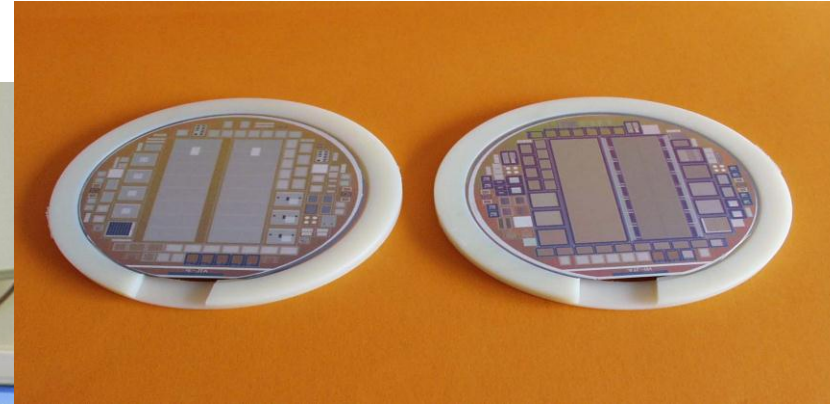
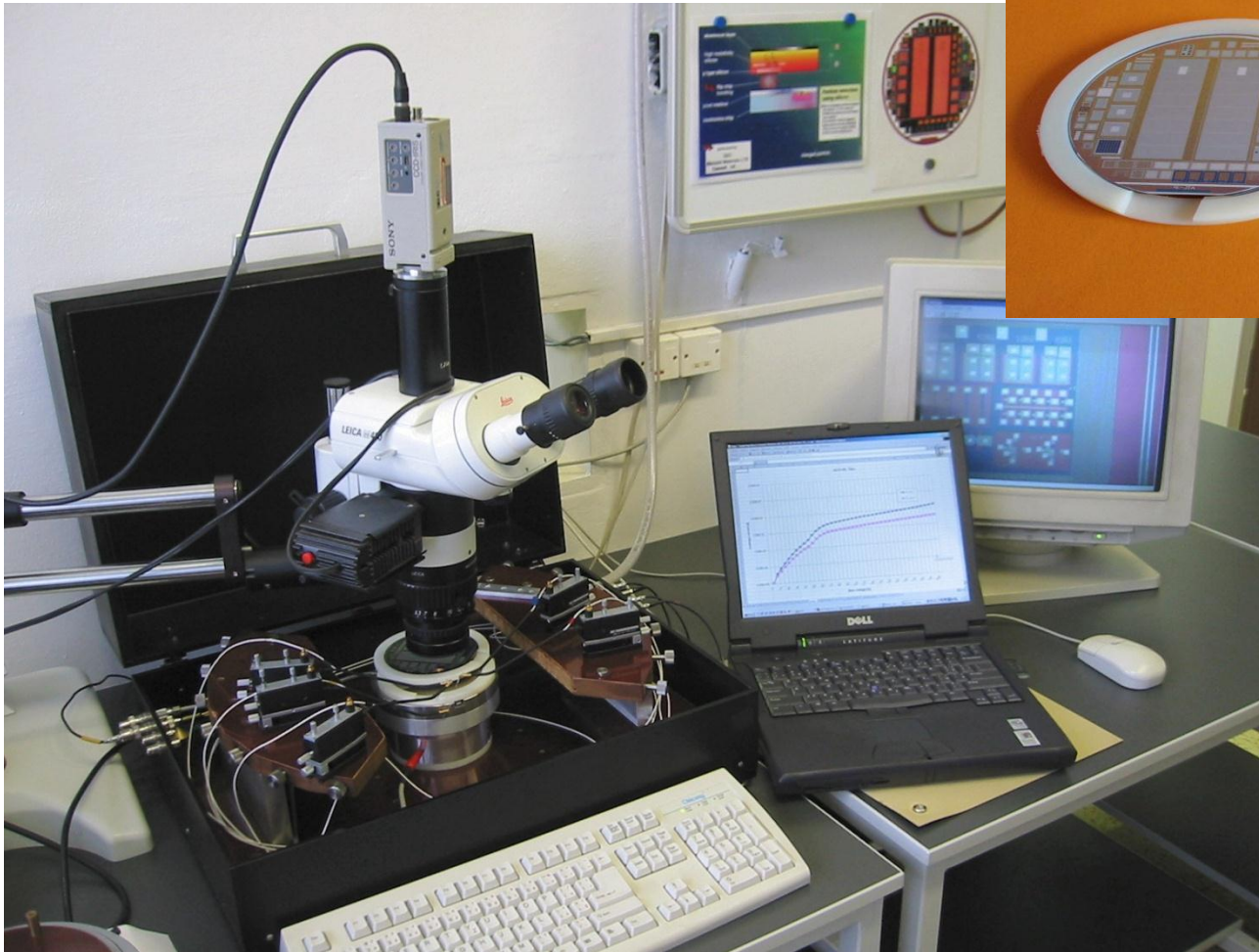
Wire bonder *Delvotec*



Stereo Inspection
Microscope *Vision*



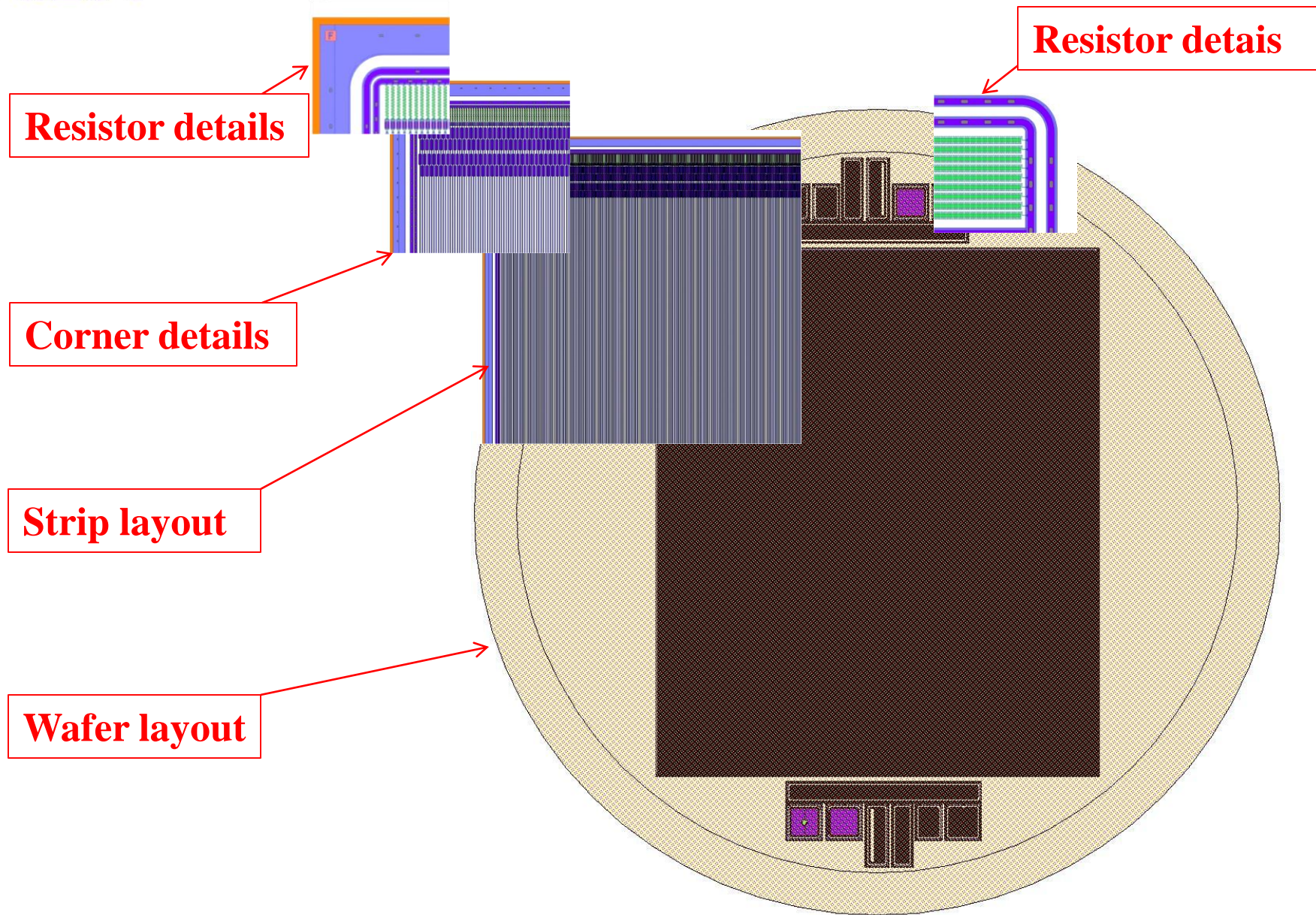
Manual probestation



**Sensor produced at
ON Semiconductor ,
Czech Rep.**

ON Semiconductor

- **ON Semiconductor:** *Transition from 4" to 6" wafers*
- → new mask projection machines,
- → the stitching technique is needed



Further steps

- → finalisation of the layout and the GDS with the sensor design (soon)
- → prototype production submission
- → sensor characterization (~ summer 2012)

Thank you