

Company Presentation



Konstantina I. Mermikli
Electrical & Computer Engineer



Presentation Outline

- Company ID
- History
- Organization
- Manufacturing for CERN
- SRS Production

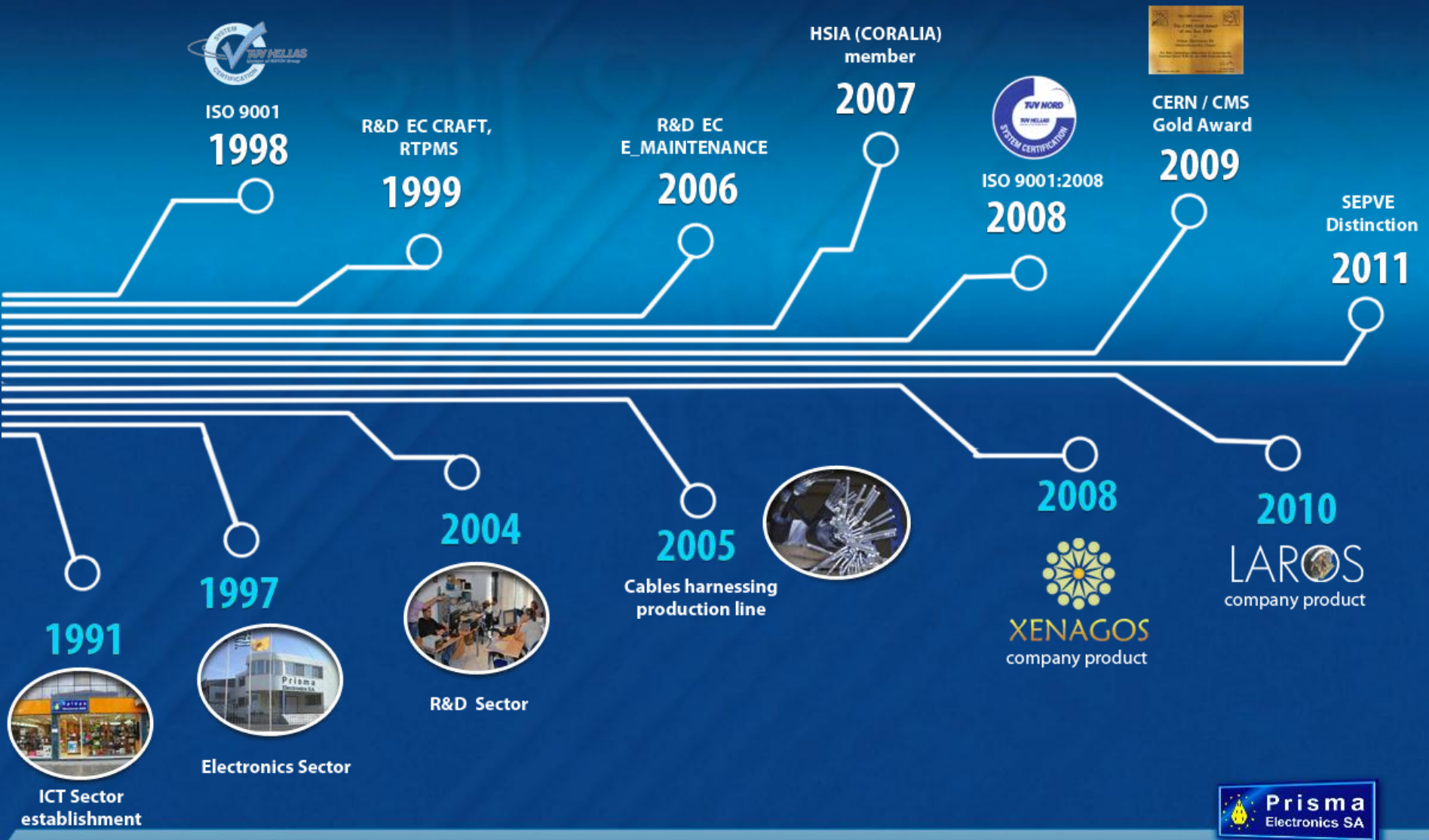
Company ID

Prisma Electronics SA

Established	: 1991
Location	: Alexandroupolis, NE Greece
Personnel	: 50
Activities	: Electronics – ICT – R&D
Turnover (2010)	: 3,3 MEuro
Q. System	: ISO 9001:2008



History



Organization



Presentation Outline

- Company ID
- History
- Organization
- **Manufacturing for CERN**
- SRS Production

Manufacturing for CERN



CMS Experiment



Silicon Sensor with 32 stripes

DCU25F ASIC

Hybrid Front End (HFE)

PACE3 ASIC

Wire bonds between sensor and HFE

Kapton cable

Connector

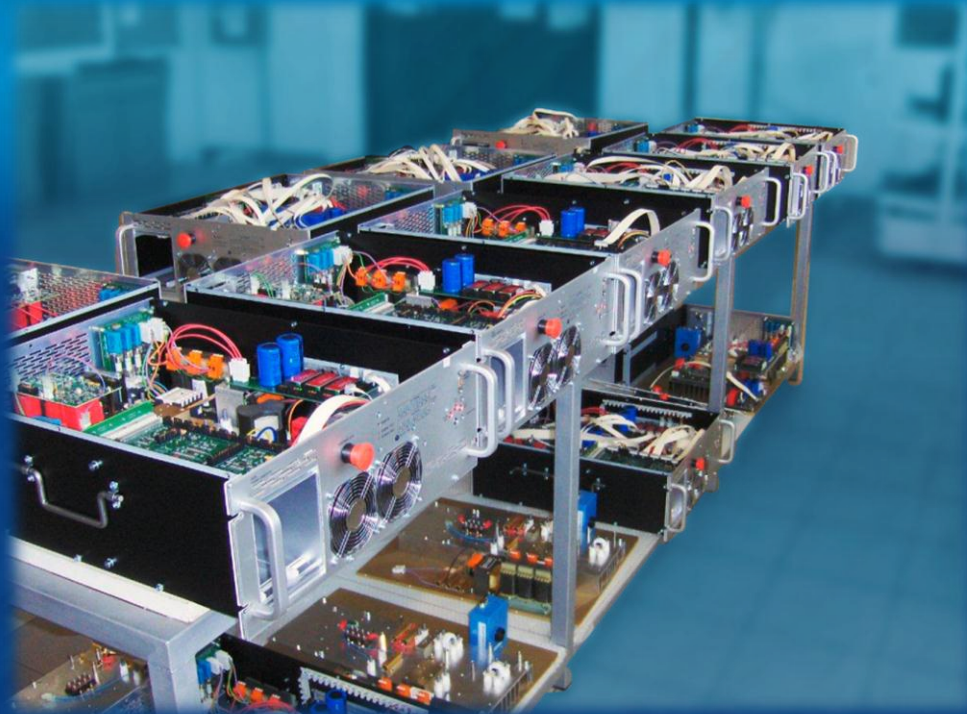
< 0.02% Defect Rate in 5.500 boards production



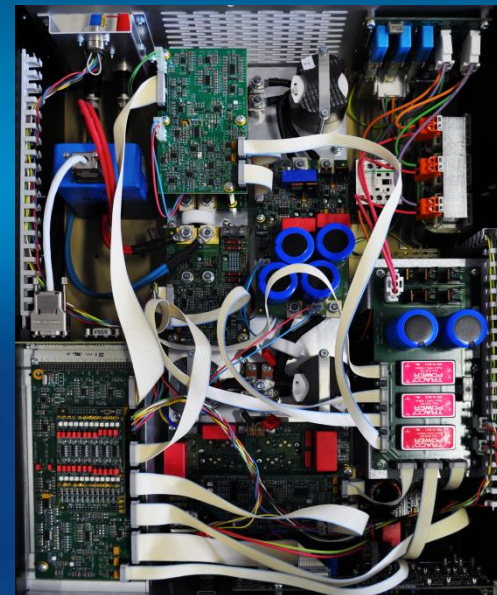
Manufacturing for CERN



ACAPULCO, AC/DC Pulse Converter



114 devices production

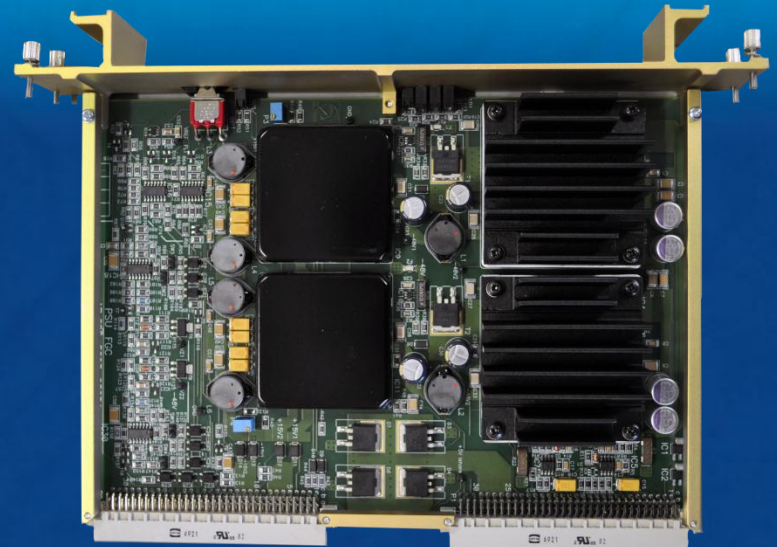


Manufacturing for CERN



FGC, Function Generator Controller

- 100 devices production
- 7 boards each

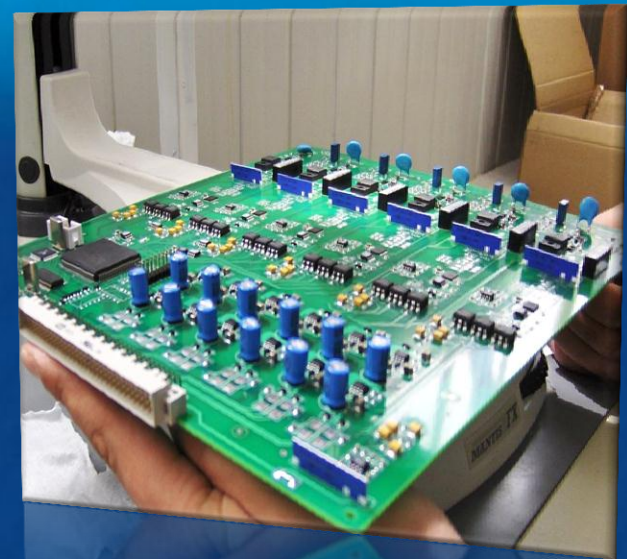
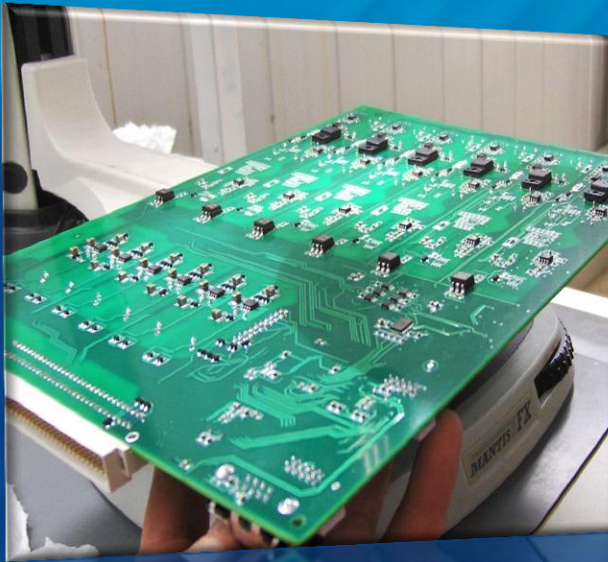


Manufacturing for CERN



ALICE, Pythagoras

- Prototype board
- Components on both sides



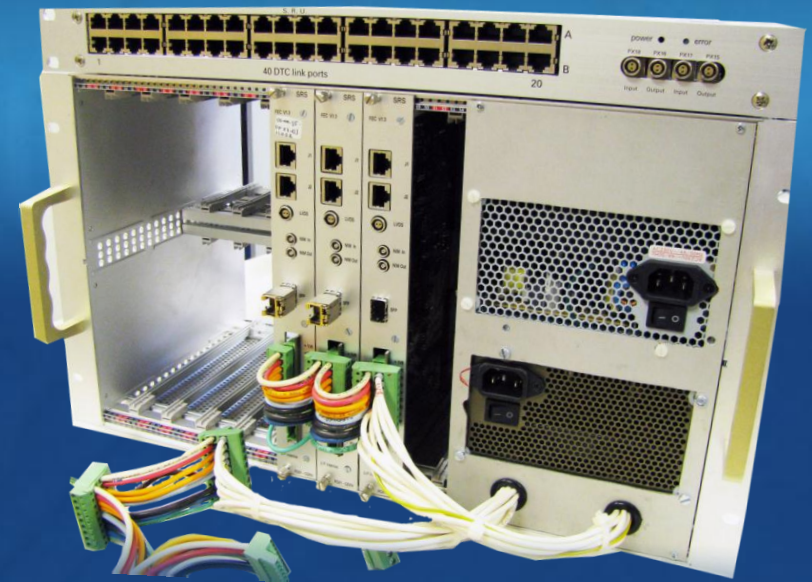
Presentation Outline

- Company ID
- History
- Organization
- Manufacturing for CERN
- **SRS Production**

SRS Production

Status of SRS Production

- Pilot production in agreement with CERN Finance Department and exclusive sales of SRS via the CERN store
- Detailed analysis on SRS specifications
- Design of manufacturing process



SRS Production

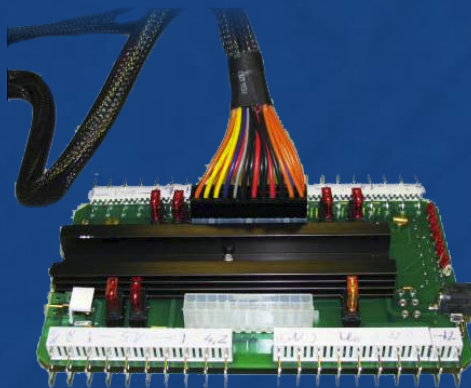
SRS Parts



ADC



Hybrids



ATX Adapter



FEC



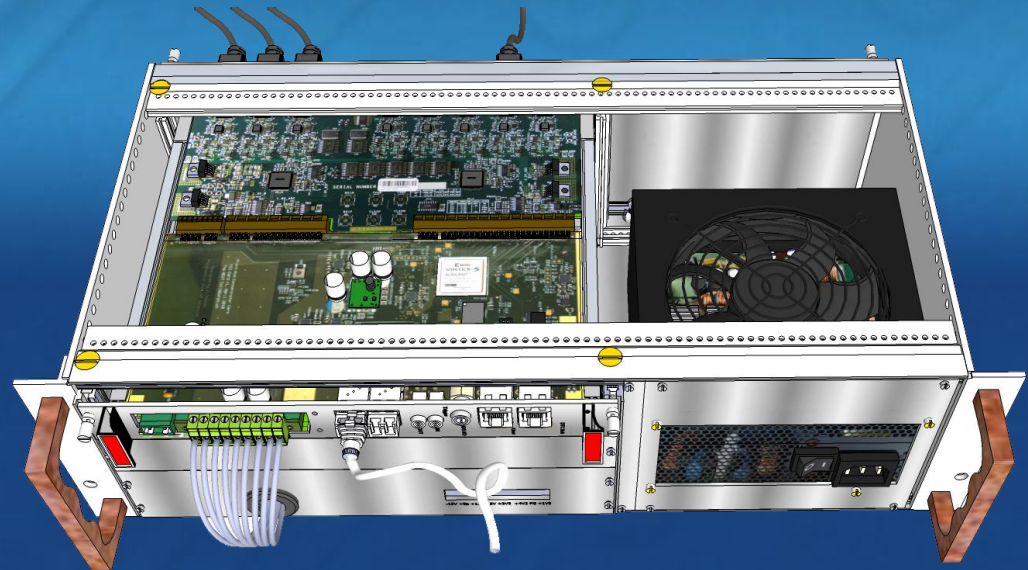
SRS Production

Minicrate

- 6 devices production
- Each Minicrate (2k channels)

contains:

- 1 x FEC/ADC combo
- 1 x ATX Power Supply
- 1 x ATX adapter



For Small & Compact Test Stations – Up to 4k channels



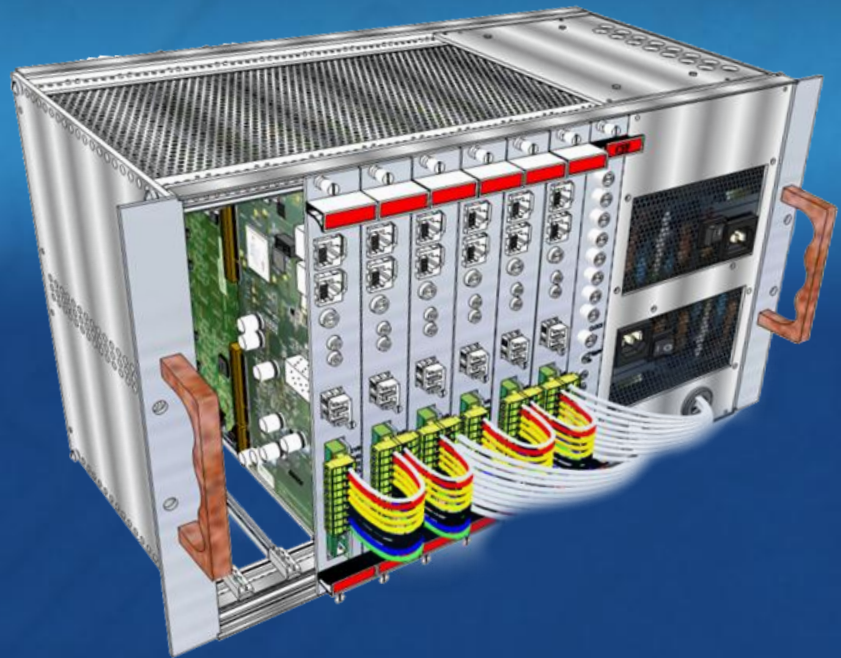
SRS Production

Eurocrate

- 7 devices production
- Each Eurocrate (4k channels)

contains:

- 2 x FEC/ADC combos
- 1 x ATX Power Supply
- 1 x ATX adapter



For Larger Systems – Up to 16k channels



SRS Production

Manufacturing Process

- Prototype phase = Production of 1 x Minicrate & 1 Eurocrate
- Functional Tests of the prototype in cooperation with CERN engineers
- Repair possible malfunctions
- First pilot production of the rest SRS devices



SRS Production

Roadmap

- After the components supply, less than 20 working days are needed for the prototypes production
- Functional tests of the prototypes
- After the prototypes are accepted, less than 25 working days are needed for the rest SRS devices production
- Functional tests of the rest SRS devices

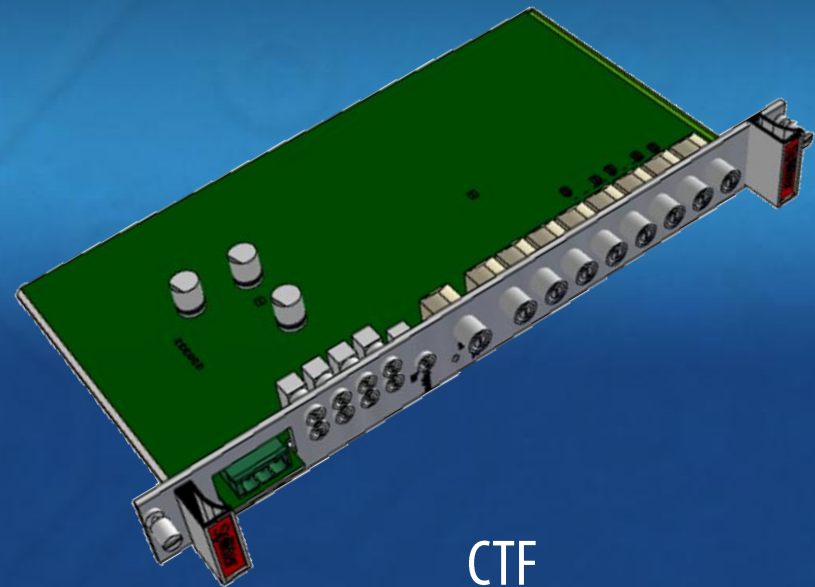
SRS Production

Plans for the next production

- Bigger quantities of SRS devices
- Add new CTF module
- Add SRU for up to 80k channels



SRU



CTF

Company Presentation



Konstantina I. Mermikli
Electrical & Computer Engineer

