
**HEPiX Fall 2012 Prague
SLAC Site Report
April 23, 2012
Randal Melen**

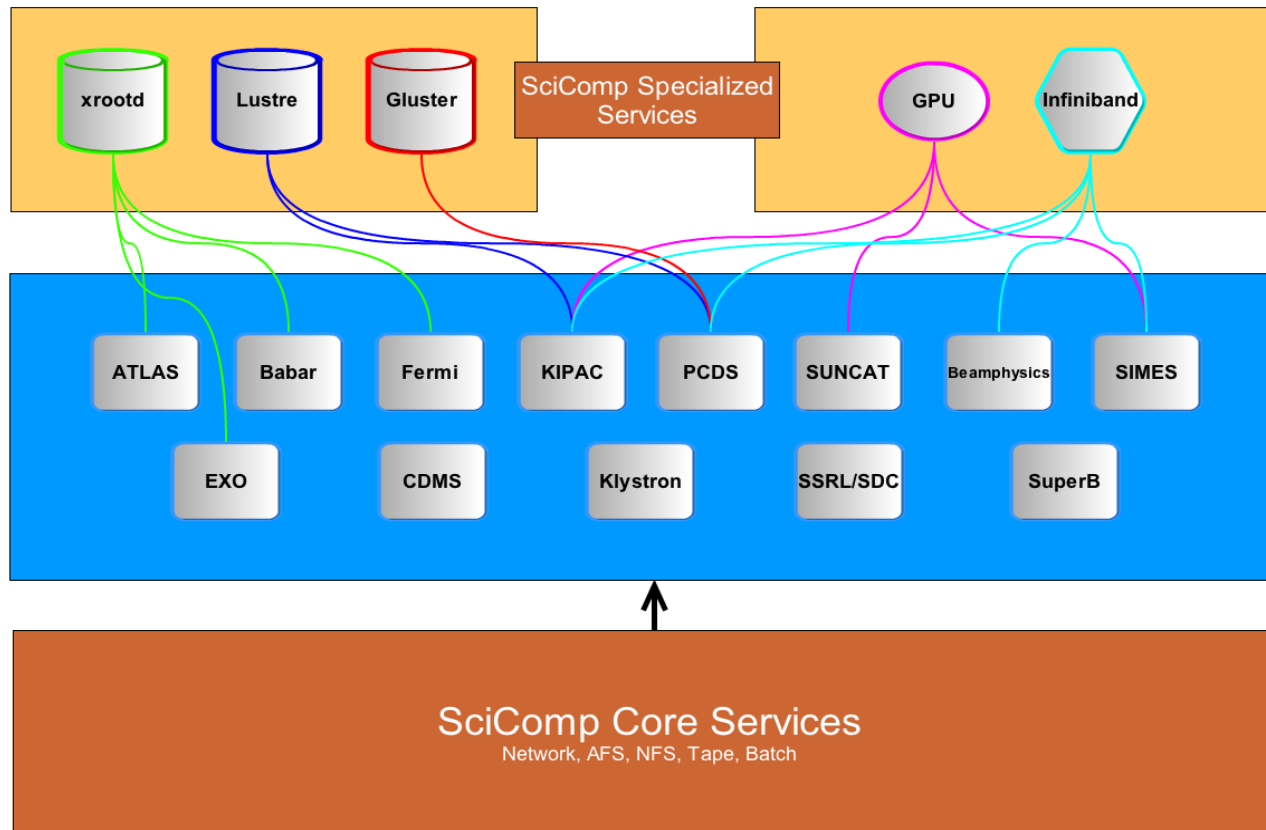
Computing Division Organization Changes (again)

- Deputy CIO (Randy Melen) appointed as Interim CIO
- Search committee selected a new CIO, James Williams, starts May 7, 2012, from NASA-Ames
- Scientific Computing Applications (SCA) now managed by Amber Boehnlein, Head of Scientific Computing, along with Scientific Computing Systems (SCS)
- Bob Cowles retiring as CISO; Interim CISO is Nan Spiers

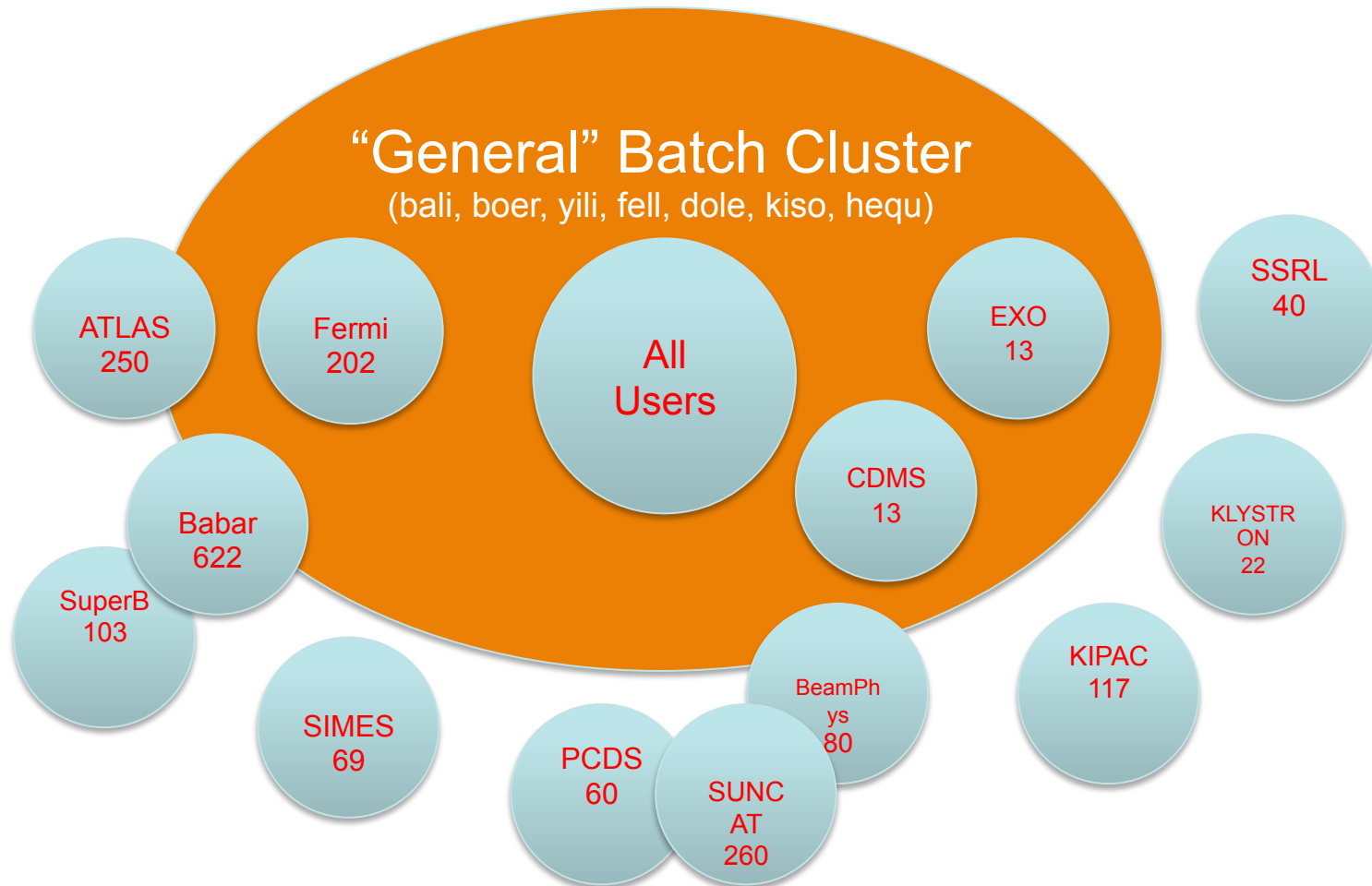
SLAC Organization Changes Coming

- SLAC Director Persis Drell stepping down, search committee formed, selection likely early summer 2012
- SLAC COO/Operations Associate Lab Director Sandy Merola has retired; Deputy COO Mark Reichanadter is Interim COO
- COO selection likely completed for fall 2012 after Lab Director in place

Scientific Computing Services



SLAC/SCS Batch Farm



Computing Updates

- LCLS Photon Control Data Systems have 3x1PB Lustre file systems and 1x1PB GlusterFS system in production
 - ~10TB per day during experiment run
 - Still two copies saved to HPSS tape, one to Lustre or Gluster
- BaBar Long Term Data Access now in production to provide and maintain the capability to perform BaBar data analyses to at least the end of 2018

Computing Updates

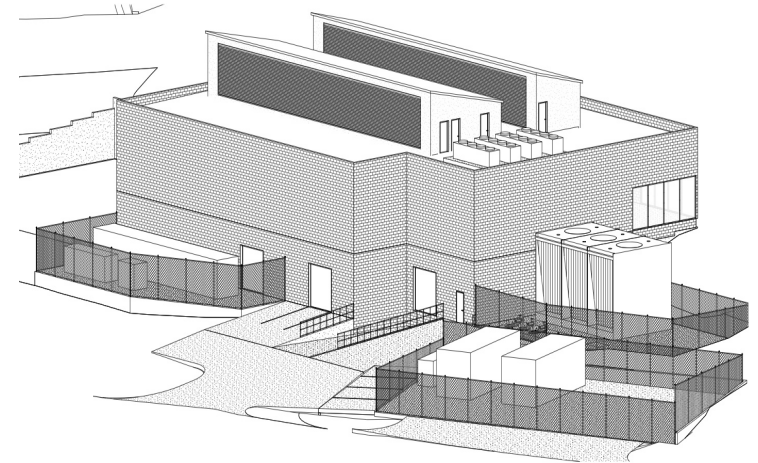
- Fermi Gamma-ray Space Telescope extended to 2016
- BlueCoat Web proxy now in production
- Beginning to use Splunk for log analysis for security, some customization still to be done
- Windows 7 rollout continues
 - 1010 W7 systems; 1326 XP to retire or migrate.
 - All new desktops and rebuilds are W7
- Macintosh Support
 - > 800 Macs on site, support model being rolled out

Computing Updates

- Top non-SciComp project is ERP (Enterprise Resource Planning); several years, > \$20M, PeopleSoft-based, vendor selection started
- Document Management System to hold and manage all controlled institutional documents (policies, procedures, versions, authorizations, reviewers, etc.); SharePoint 2010 migration
- Partnered with Stanford to hold > 60,000 photos in the Stanford All-Image Exchange searchable database in preparation for 50'th Anniversary this year; <http://sallie.stanford.edu>

Data Center Expansion

- **Stanford Research Computing Facility (SRCF)**
 - Stanford's Board of Trustees approved design on Oct 10th.
 - Project phase review approved in December.
 - Construction phase reviewed in February 2012.
 - Expected occupancy in 2014
- Interviews for SRCF Computing Director restarted and under way.



Storage

- Running HPSS 7.3.2
- HPSS: Plan to upgrade tape drives from twelve 1TB drives to 5TB T10KC drives.
- HPSS: Currently store ~8 PB on ~6700 tapes.
- Small Lustre test system in use.
- Small pre-RH Gluster test system in use.

XLDB

- XLDB 6 conference will be September 10-13, on Stanford campus (now too large for SLAC)
- XLDB-Asia 2012 Satellite Conference, June 22-23, 2012, Beijing
- www.xldb.org for more information.