

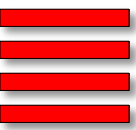
SVD in Beast II

T Tsuboyama (KEK)

8 Feb. 2012

The opinions here is my personal view and
there are no decisions in the SVD group.

SVD in Beast1



- 1998-1999.
- Few photos/records/reports are found:
 - There were no digital cameras in 1998.
 - Transparencies are written by hands and only photocopied.
 - Old SVD meeting minutes pages (on VAX or Sun Workstations) gone.
- I forget everything about SVD in Beast1. I looked up old BGM files and found several materials.
- I found We have installed two layers in Beast. I uploaded them to

<http://belle.kek.jp/group/svd/scannedimages/SVD1/>

I hope M. Rosen (Hawaii) still keep those CAD data.

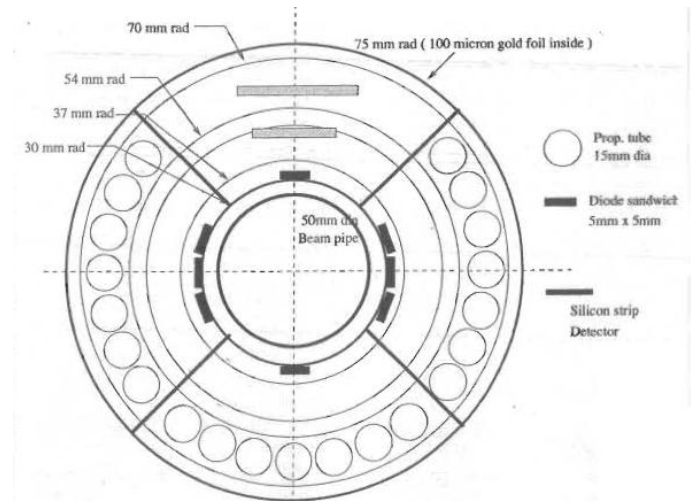
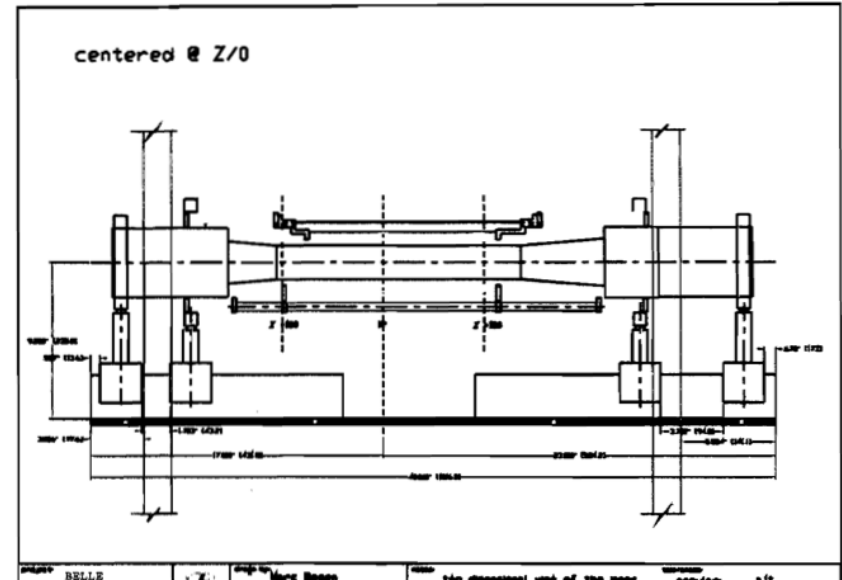
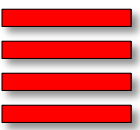
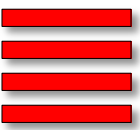


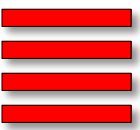
Figure 6: $r\phi$ -view of commissioning detector between beampipe and CDC.



- From view point SVD hardware, the most important purpose is to decide when we install SVD.
 - When the average occupancy in Layer 3 becomes tolerable (50 % for example) we should decide the installation.
- For this decision, we do not need many layers.
 - Even we have four DSSD layers they will not help us to understand the background sources and how to stop them.

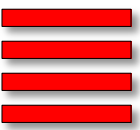


- Dedicated X ray and neutron sensors will be more useful than partial PXD / SVD sensors.
- The X ray, neutron sensors should be distributed as much large acceptance as possible.
 - At least for 4 sensors (0, 90, 180 and 270°) in F and B direction.
 - From the ϕ , r and Z dependence we will be able to get the information of radiation sources and
 - Then we will reduce the BKG.
- Sensors to be used in Belle2 should be tested in Beast.



- The Belle2 SVD readout chain must be ready at the time of Beast2. Then we will use the system.
- If the DAQ system is not convenient, APVDAQ, a simple SVD readout system by Vienna group can be used.
 - APVDAQ was referred to in this meeting a few time
- We need data with and without external trigger.
- CO₂ cooling will not be essential.
- Since only 1 or 2 ladders are installed, a simple ladder support will be enough.

Summary



- At least one or two ladders of SVD will be installed in order to know the BKG condition to SVD.
 - I do not think the SVD-only tracking in Beast is worth trying unless we have enough people for read out, coding and data analysis.
- Dedicated X-ray and neutron sensors will be more useful for identifying the radiation source.