

WLCG Transfer Monitoring

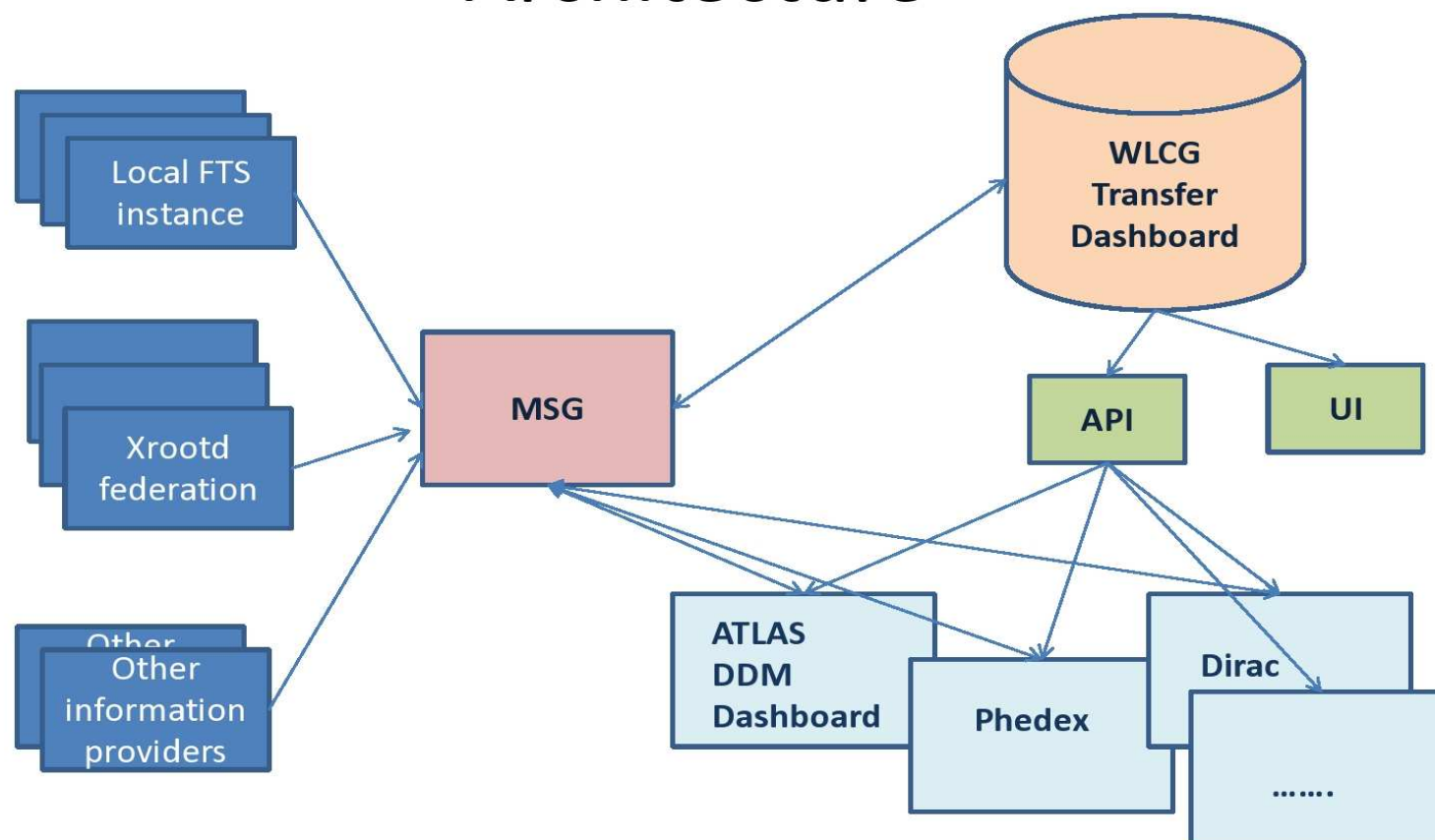
Daniel Diéguez

Supervisor: David Tuckett

- Aims
- Architecture
- Gunner's work
- User Interface
- What I did so far
- Stress test

- Monitor all files transfers on the grid
- Global and VO-specific statistics
- Provide Statistics
- Provide UI and API (Currently is working a prototype of UI)

Architecture



- Collector (some features).
 - Messages from one queue to corresponding database table.
 - Messages in JSON format, messages must match database table.
 - If messages can't be inserted, sent to a rejected queue.
- Statistics Generation.
- User Interface Prototype.

ES

UI

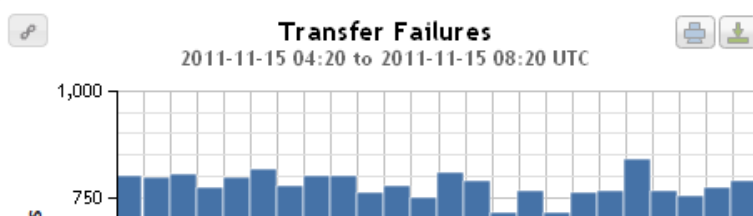
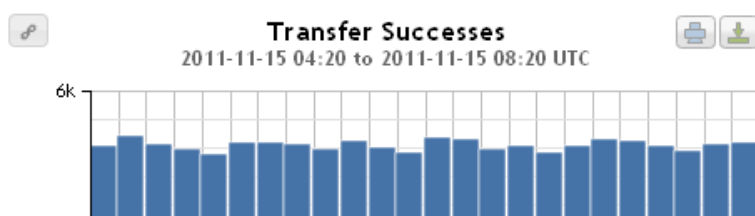
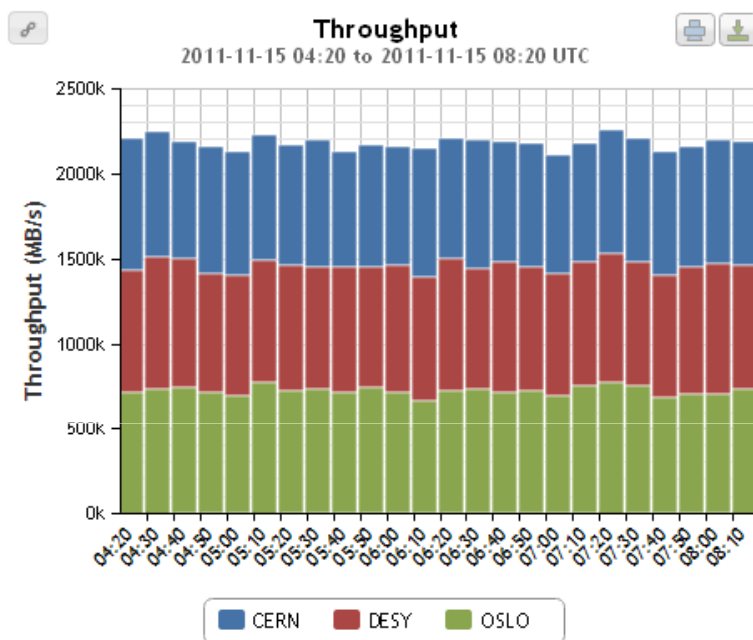
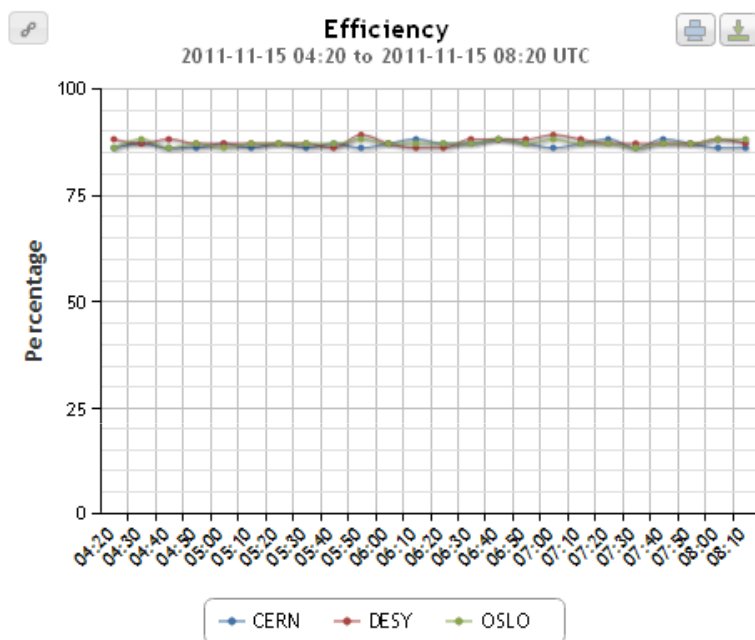
TRANSFERS (2011-11-15 04:20 to 2011-11-15 08:20 UTC) PLOT: SIZE BIN: SIZE FORMAT STEP

Matrix

Source Plots

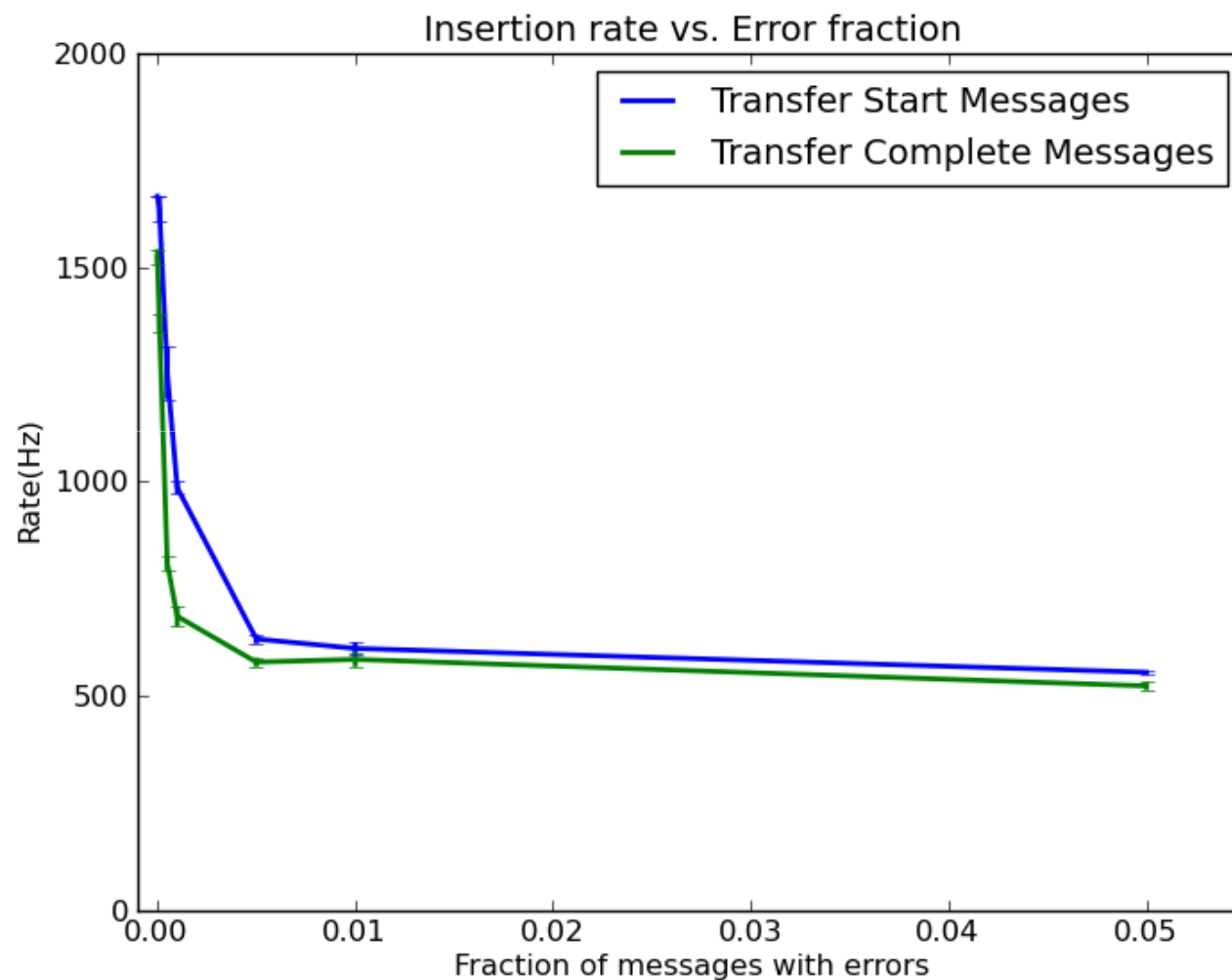
Destination Plots

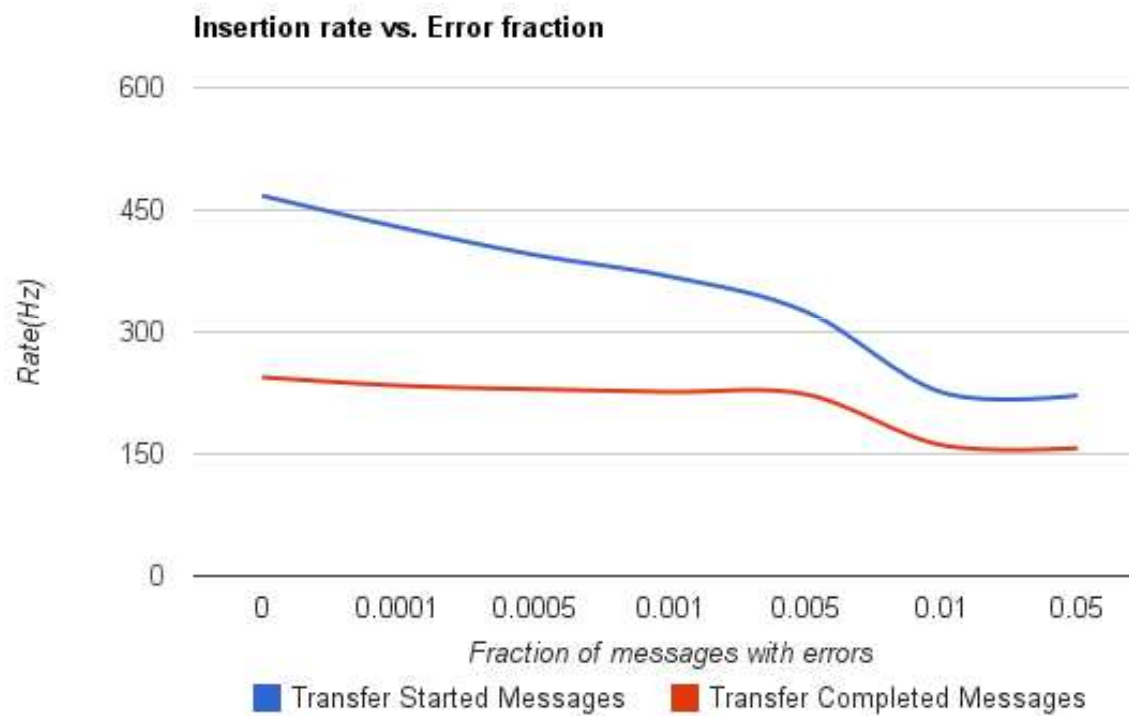
VO Plots

<http://dashboard46/ui>

- Learn about:
 - The grid
 - The project
 - Dashboard framework
- Improvements:
 - Mock producer and Stress test rewritten as dashboard agents
 - Google Spreadsheet for the Stress test
 - Fix some problems in the generating of statistics
 - Host certificates on the collector
 - Test using gridmsg007 with messages sent from FTS

- Repetition of the stress on dashboard46
- The results obtained are similar to results obtained by Gunner





<http://dashboard46/ui/stresstest.html>

ES

End

CERN IT
Department

Thank you