

Beam Instrumentation for PUMA@ISOLDE

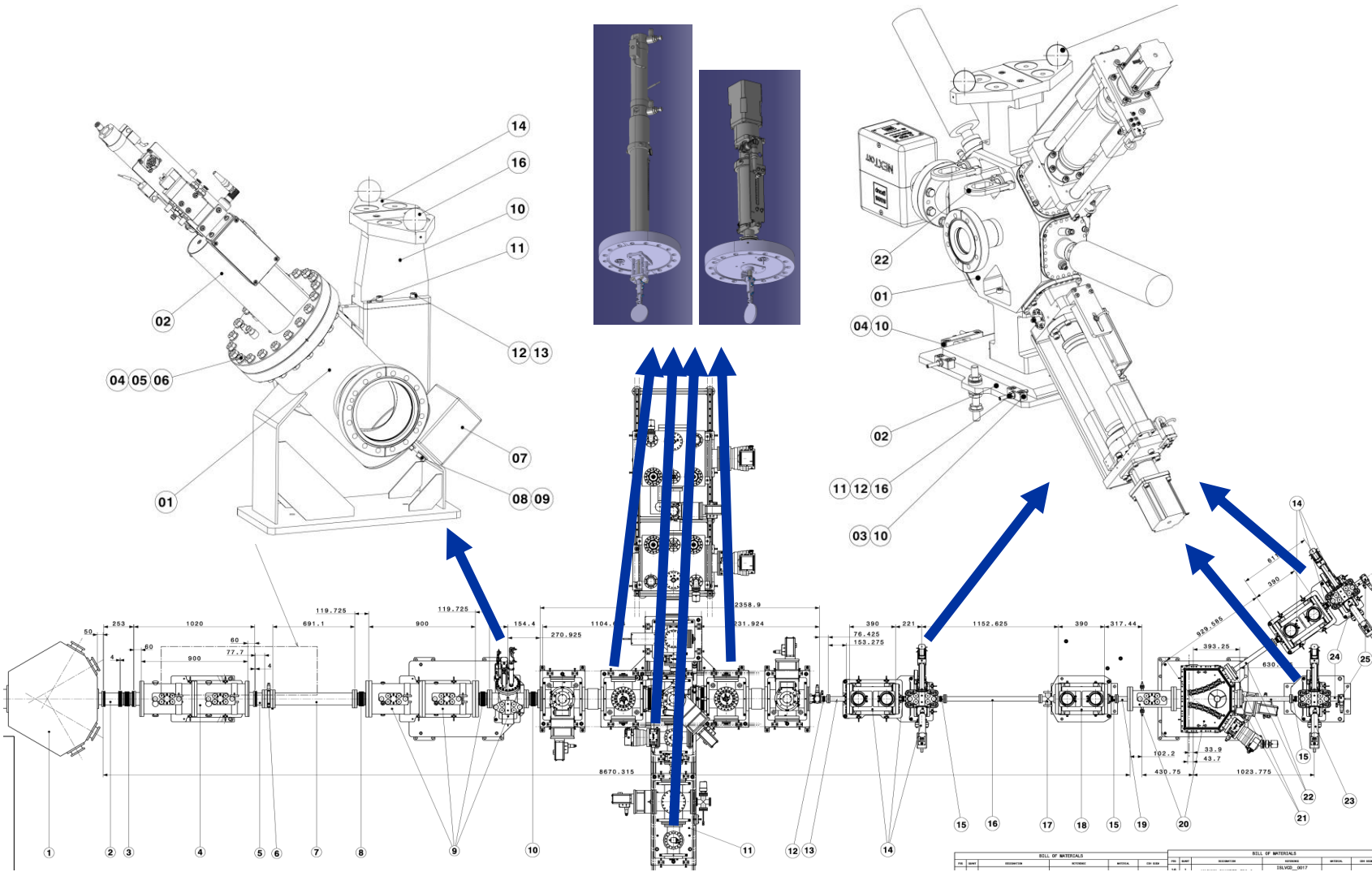
M. Martin Nieto , P. Martins, J. Tassan-Viol

W. Andreazza, S. Bart Pedersen

C. Pasquino, F. Roncarolo

Puma@Isolde – 5 February 2026

BI Diagnostic boxes

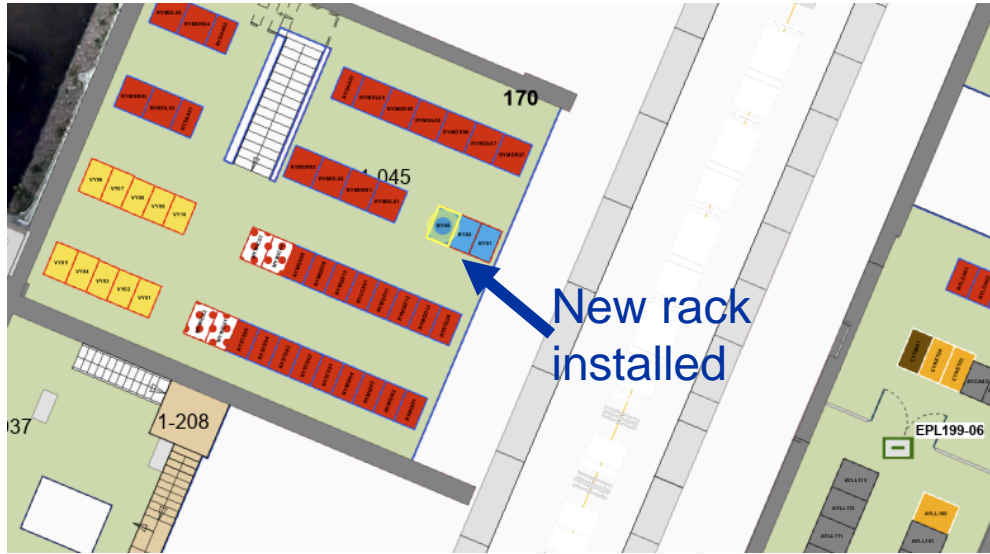


- **DB1**
 - Isolde type:
 - Faraday Cup
 - Scanner
- **DB2-4**
 - HIE-ISO type:
 - Faraday Cup
 - Scanner
 - MagneToF
 - Slit/collimator
- **Collector plates**

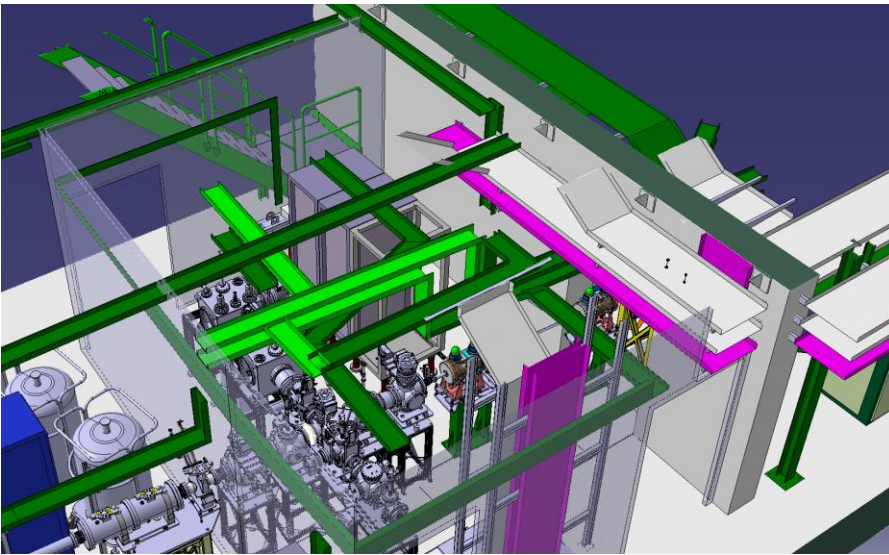
Manufacturing

- **DB1 failed RGA test.**
 - Likely residues from manufacturing.
 - Supposed to be washed but wasn't.
 - All parts have been sent for cleaning (all DBs).
 - Assembly can continue once they are back.
 - Beginning of April for delivery.
 - Mechanical team will need to coordinate with vacuum re: dates.

Rack and electronics



- **Cards, FECs installed/ready for installation.**
- **FESA class ready.**
- **Adaptation HW is being integrated into the existing controls.**



Outlook

- **DBs will need more time to assembly:**
 - Delivery for April.
- **Calibration:**
 - Calibration bench ready to receive the DBs.
- **Electronics and software:**
 - Initial FESA class, expert GUI deployed.
 - Adaptation electronics proven, final design ongoing.
 - Integration with current system.
- **Budget:**
 - Mechanical: 350k (estimate) + 75k (collector plates).
 - Components: 55k; machining: 107k.
 - Some purchases and services to be added.
 - Electronics: 65k (MT + electronics) + 20k (PAMs) + 18k (TDCs).



home.cern