

MOM Update

Henry Nebrensky

8 February 2012

## MOMs between CM31 and Christmas

- Paul Hodgson
  - Electrical shutdown – substation certification
- Linda Coney
  - DS compressor seal – repaired
  - DAQ NIM crate failures – replaced
  - Running checklist development
  - Target beam bump studies
- Yordan Karadzhov
  - MICE data-taking
  - Shakedown of PPS and procedures
  - DATE <-> EPICS communication
  - MAUS-based online reconstruction

I assume this will mostly be covered  
by Paul and Yordan

## MOMs since Christmas

- Andy Nichols (fallback MOM)
  - Peace and quiet over the break I hope
- Henry Nebrensky (first attempt)
  - See following slides!
- Andy Nichols (fallback MOM)
- Dan Kaplan
  - Starts today

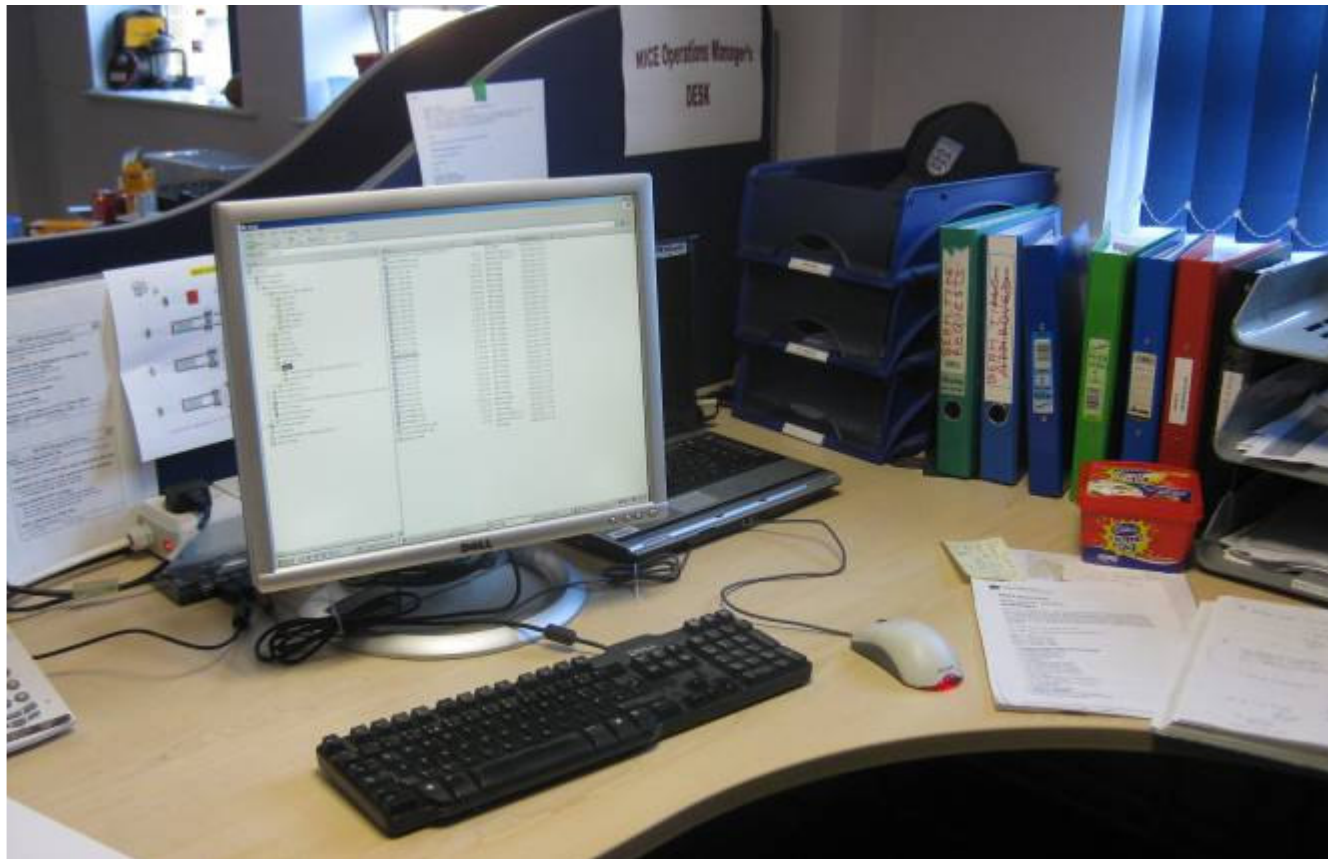
## MOM Tasks

Worrying backlog of trivia – MOM laptop updates, mass of unsorted MOM e-Mail...

- Filed 9 months worth of “Walkabout Sheets” into the “MOM walkabout sheet” binder in the MLCR
- New Expert List – latest version on Web for comments.
- Also updated the MOM handover document and key list, and mostly cosmetic changes to the walkabout sheet (POMPOM PSU back on for the 3<sup>rd</sup> time!).
- New-style walkabout summary in the eLog

## MOM Laptop

- I've fixed the printing to the large colour printer, and to R1, and to the MLCR
- I've applied updates, especially Thunderbird which had pretended to lose all of MOM's mail
- Backups now automatically happen weekly
- Matt Robinson has agreed to look after the MOM laptop – make sure updates applied and backups are made.



Tidied up and  
hopefully  
more usable

## MICE Van

- New tyres
  - pressures on MICEmine page
- Screenwash topped up
  - Owner's guide back under driver's seat!
- Sun visor replaced
  - (with the correct number of bolts)

[The aroma remains ☹ ]

# MICE-ycle

- blue Raleigh Pioneer Commuter,  
– lives behind R66



## Keys (in 2012)

- Now have MOM-specific keypress, for most of MOM's keys
- Identified and labelled keys to old padlock based access controls for trench and mezzanines – this system is still usable if needed
- Found 1 set of keys to old padlocks on outer doors... appears to be a bunch (literally) missing
- **Still have two completely unidentified keys to carry round 24hrs/day!!!**  
(One's a filing cabinet, other could be anything)
- Yet more keys coming with the SC magnets and RF system ...



I've also updated the MOM key list document.



## Moving beamstop

- Engineer came out Jan. 3<sup>rd</sup> to service it, as it had failed before Christmas.
- Both power packs worked fine, under both local and remote control.
- So we're assuming it's working again.
- Geoff Barber has made up a slide showing the power change-over procedure – posted on DSA wall by the controls.
- I'm to write up a technical/troubleshooting guide.

**NOTHING in eLog to explain why or when it had failed!**

## Power outage in PPD / R1 Tue. 10<sup>th</sup> Jan

- Lost power to web services and bastion, etc.
  - Most services restored same day
  - Glitch with DNS on micenet – fixed Wed.
  - Blew one of the redundant PSUs on the DB server – replaced by vendor engineer Wed.
  - *I believe everything back to normal in less than two days*
- Lab 7 also affected – recovered by Tracker group

## Dosimeter survey in DSA

A set of radiation badges was posted around the DSA during a shutdown on the 5<sup>th</sup> of December.

Recovered in mid-January and processed – any dose was below their detection limit.

Resulting discussion should also settle the neutron monitor calibration issue.

## Hall activities:

- Decay Solenoid current direction – connections back to normal
- A couple of the DS temperature sensors failed near-simultaneously on 3<sup>rd</sup> December. Believed fixed – broken wire found at turret – but not obvious how it would have got broken!
- Survey of LH2 Mezzanine, prior to modifications
- Preparations for He test of LH2 system are nearly complete
  - *N.B. My understanding is that the later H2 test implies 4 weeks of no Hall access (!)*

## More Hall activities:

- AFC1 and RFCC1 sliding floors installed

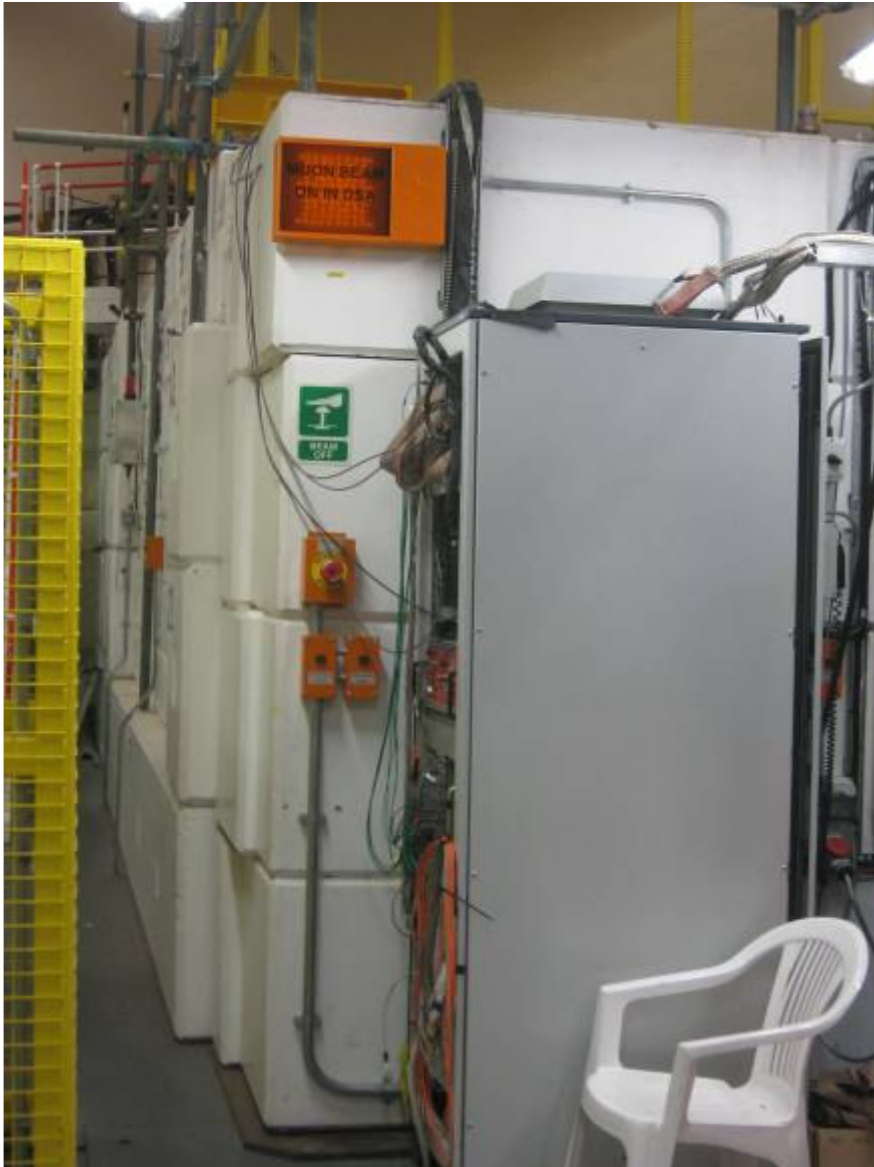


## Annual Beamline Magnet checks:

- DSA searched
- “Magnet On” lamps inspected, OK
- “Magnet Status” panel – not OK
- Polarity sensors remounted and tested



# PPS Functional Test:



Note: SC Magnets permit still available during Controlled Access

All over bar the paperwork!

Note that the PPS never **locks** the Hall

- it is a *Personnel* protection system, not a *Property* protection system!

The implications of this need to be taken into account when designing procedures and planning work.

(The PPS must have the ability to trip off magnets and RF, even when only using test supplies etc.)



# Target and BPS

- Cabling installed in synchrotron
- New “Frame Enable” Castell key
- Target exercised



## Hall activities:

- Air-conditioning reconfiguration
  - Scaffolding is up
  - Unit 5 has been modified
  - Remainder in progress
  
  - Work continues until 29<sup>th</sup> Feb.
  
- LH2 system testing



## Hall activities:

- Cosmetic Bulkhead (fireproofing) by Personnel Door
- **Closed until end of week**
- **(no search of Hall)**



## Upcoming activities in Hall:

- Air-conditioning reconfiguration completion  
(3 weeks of scaffolding around Hall, HV off?)
- Fireproofing around personnel entrance and metal detector completion  
(week with that entrance out of use – can't search Hall)
- Removal/storage of KL and TOF2
- LH2 system – Helium testing

+ work in R78, R9, Lab 7.....

# MOM Redmine issues


(Now displayed weekly at MICO meetings)

Issues assigned to me (7)

# Project Tracker Subject

- 895 Operations Feature Review key handling arrangements (Open)
- 894 Operations Bug ISIS permission for target rack webcam (Open)
- 562 Operations Feature Proton Absorbers (Open)
- 884 Operations Bug Neutron monitor calibration and testing (In Progress)
- 391 Operations Bug Q123 PS rack - power strip (In Progress)
- 374 Operations Bug Magnet status panel (In Progress)
- 83 Operations Feature e-log improvement (Open)
- 547 Operations Feature run negative beam w/proton absorber? (Open)
- 885 Operations Feature Get new schematic of Hall for MLCR (Open)
- 823 Operations Feature install pneumatically operated Proton Absorbers (Open)

Discuss with  
Hall Manager  
and Ops group



Bug  
ISIS... !



MICE ISIS  
Safety mtg



**Future MOMs: remember relevant issues may have been re-assigned to someone else – and may be assigned back to you for completion!**

Can see that some things hang around for a LONG time

# MOM Redmine issues:

- # Project Tracker Subject
  - 727 Operations Bug Update ISIS running schedule on web (Closed) Asked for Aug., ticket raised 6<sup>th</sup> October (done Jan.)
  - 583 Operations Feature Lock for back of DS power supply (Closed) Raised 15<sup>th</sup> July (done Jan.)
  - 548 Operations Radiation survey of hall roof and South side wall (Closed) Raised 6<sup>th</sup> July (done Jan.)
  - 391 Operations Bug Q123 PS rack - power strip (Open)
  - 374 Operations Bug Magnet status panel (Open) Raised 24<sup>th</sup> March 2011
  - 83 Operations Feature e-log improvement (Open)
  - 547 Operations Feature run negative beam w/proton absorber? (Open)
  - 823 Operations Feature install pneumatically operated Proton Absorbers (Open) Raised 11<sup>th</sup> March 2011
- Beyond MOM ?