



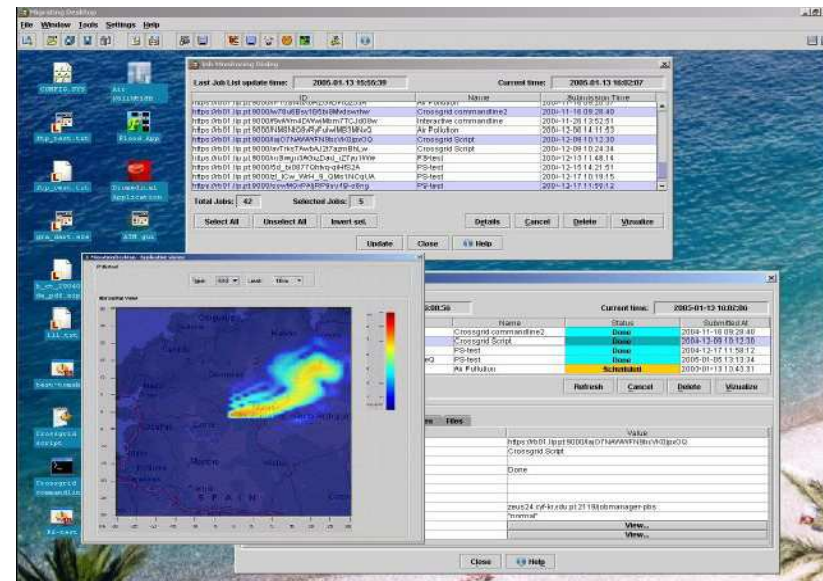
Interactive European Grid

Migrating Desktop - Graphical Framework for Parallel Grid Applications

Michał Owsiak
michalo@man.poznan.pl
PSNC

MPI Grid User Course, Dublin, 11.9.2007

- ❑ Intuitive user's working environment
- ❑ Product independent of a hardware platform and the operating system
- ❑ Ability to submit parallel jobs into GRID
- ❑ Ability to handle interactive parallel jobs



Parallel Jobs Support

- Migrating Desktop supports different parallel job types
 - ▶ MPICH
 - ▶ MPICH-G2
 - ▶ OpenMPI
 - ▶ PACX-MPI
 - ▶ interactive parallel jobs

Handling Parallel Jobs Submission

- ❑ Preparation of parallel job's input
 - ▶ Intuitive file management
 - ▶ Availability of tools for processing input files
- ❑ Parallel jobs submission
 - ▶ Submission of parallel jobs (MPICH, OpenMPI, PACX-MPI)
 - ▶ Running interactive parallel jobs
- ❑ Parallel job monitoring
 - ▶ Easy tracking of submitted jobs
- ❑ Processing the output of parallel jobs
 - ▶ Possibility of presenting partial results
 - ▶ Visualising output files
 - ▶ Visualisation of interactive jobs

Basis of Parallel Jobs Interactivity

- Basis of the interaction with parallel jobs
 - ▶ Migrating Desktop base on glogin-gvid paradigm
 - ▶ Well defined interfaces allow users to use complex tools transparently
 - ▶ glogin-gvid are proven to be stable platform for communication performed in the background

Interacting with Parallel Jobs

- ❑ Migrating Desktop provides users with ability to interact with parallel jobs
 - ▶ Users are able to see partial results of parallel jobs
 - ▶ Users are able to interact with tools that require huge computation power
 - ▶ Users have influence on the computation process during computation time

