

2012 Injector Schedule

K. Hanke / OP Days 2012

2012 Injector Accelerator Schedule

Approved by the Research Board, December 2011

	Jan					Feb			Mar				
Wk	1	2	3	4	5	6	7	8	9	10	11	12	13
Mo	2	9	16	23	30	6	13	20	27	5	12	19	26
Tu													
We													
Th													
Fr													
Sa													
Su													

LINAC2 start

CTF start

Beam available to LHC

CNGS & nTOF setup

CNGS & nTOF physics

Beam to Isolde

AD start with beam

SPS closed

PSB/PS closed

Machine Checkout

Setup with beam PSB, PS, SPS

SPS scrubbing run

	Apr				May				June				
Wk	14	15	16	17	18	19	20	21	22	23	24	25	26
Mo	2	Easter Mon 9	16	23	30	7	14	21	28	4	11	18	25
Tu													
We													
Th													
Fr	G. Friday												
Sa													
Su													

Start ISOLDE Physics

East Hall Start

Start AD Physics

Start North Area physics

Start ion source/LINAC3

Injector MD [24 h]

Injector TS [24 h]

Injector MD [24 h]

Ascension

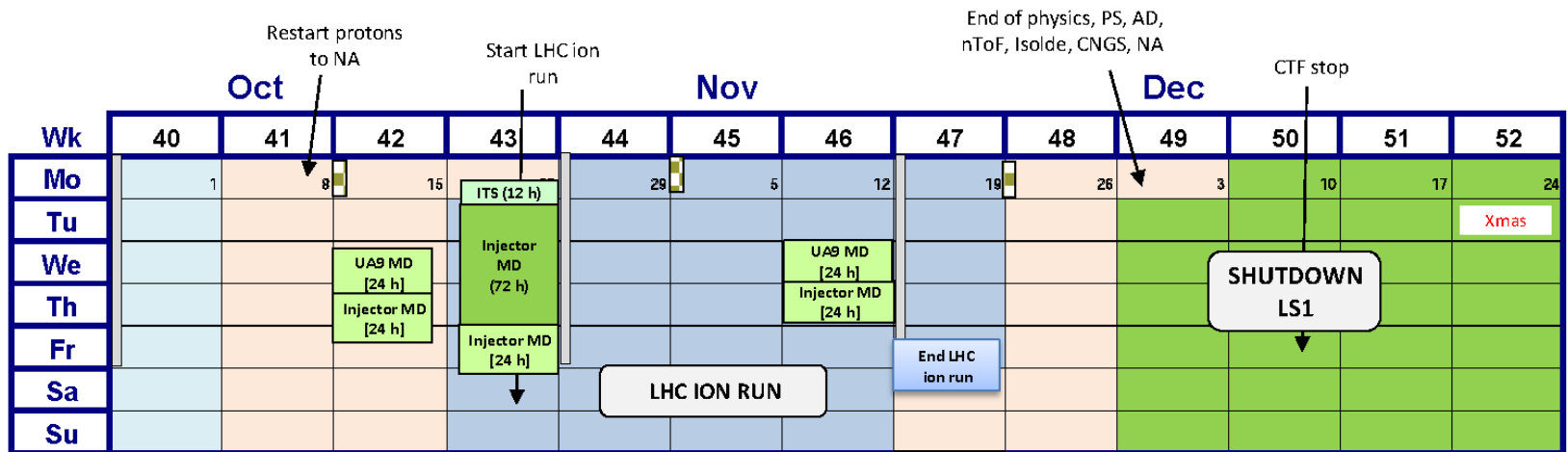
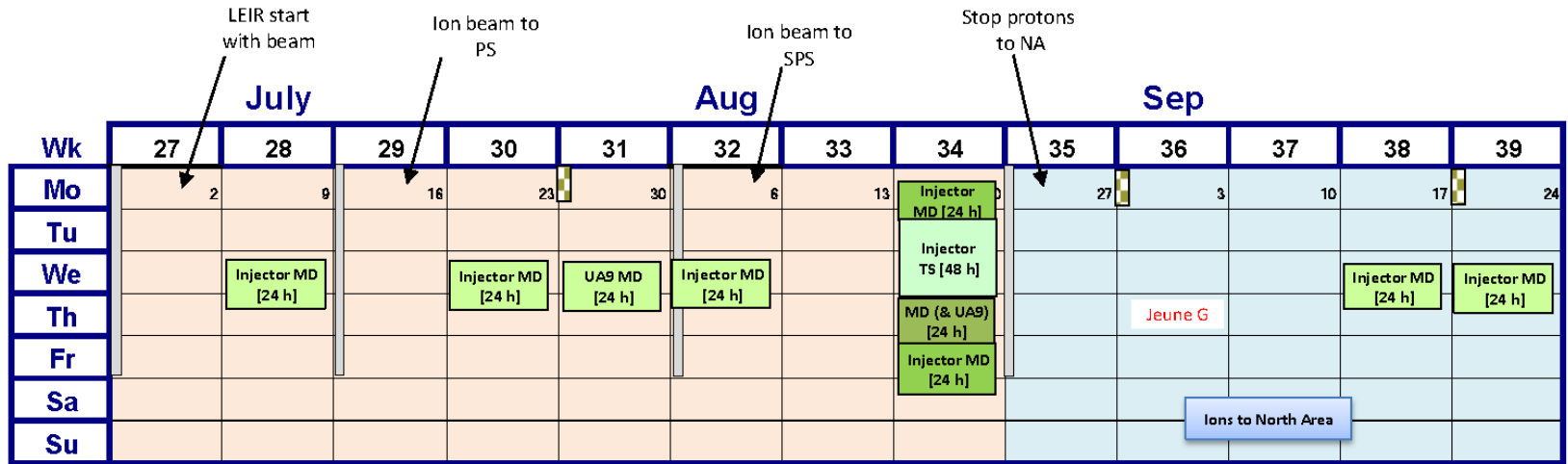
Injector MD [24 h]

Injector MD [24 h]

Injector MD [24 h]

Injector TS [48 h]

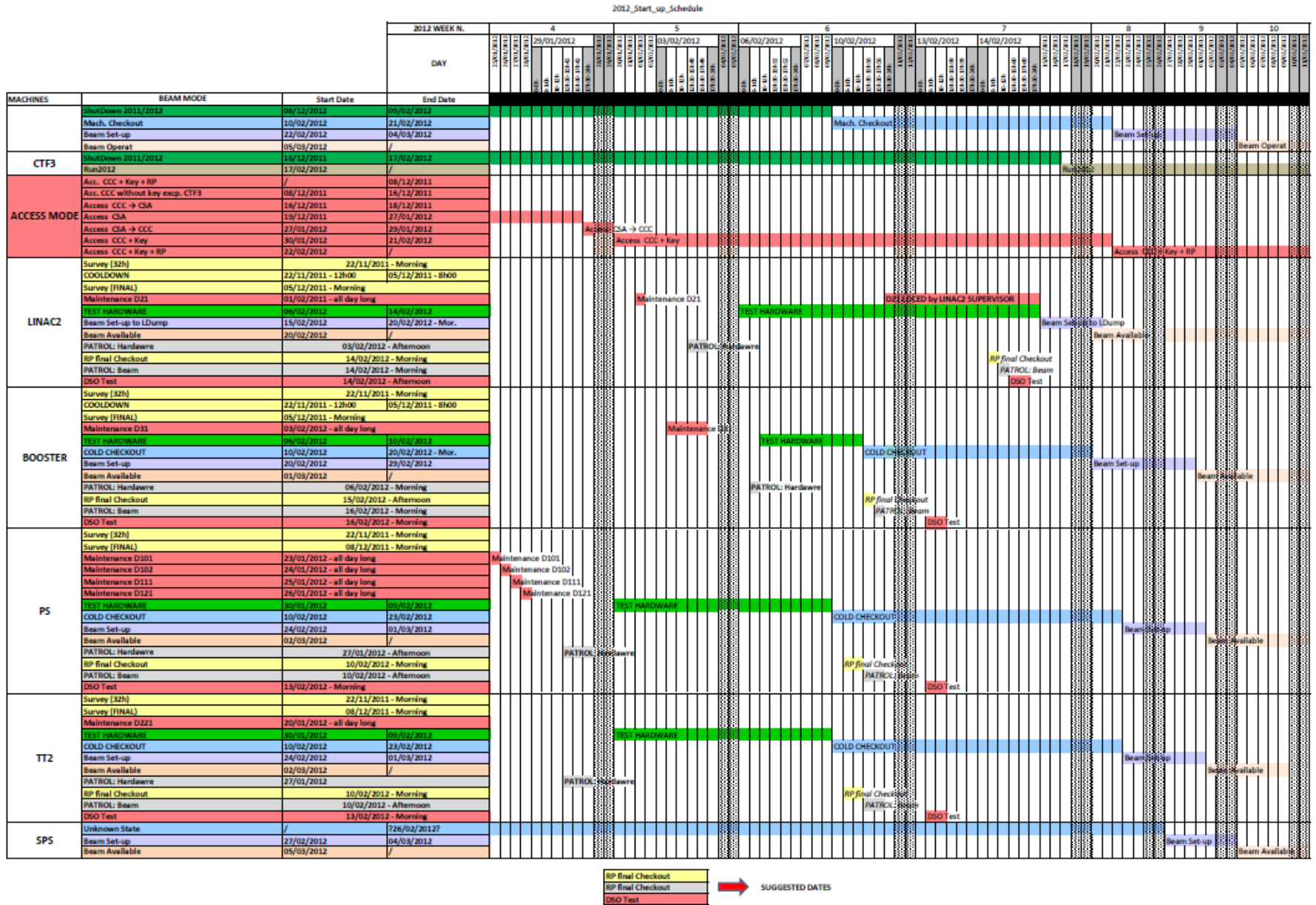
MD (& UA9) [24 h]



- Injector Complex MD Block
- Injector Stop Technical stop for the Injector Chain
- Floating injector MD - LHC beam has priority
- AD Setting-up & Studies
- Ions to LHC
- Ions to North Area
- HiRadMat: possible beam request

- early start-up, late stop
- 4 technical stops / MD blocks
- number of floating MDs
- ion run in the middle of the year
- FT experiments and LHC are trying to get most out of it before LS1

Detailed Start-up Schedule for the Injector Complex (F. Chapuis)



2012 Challenges

ISOLDE

key dates:

- protons to ISOLDE 26/3
- ISOLDE physics 2/4
- end of protons 3/12

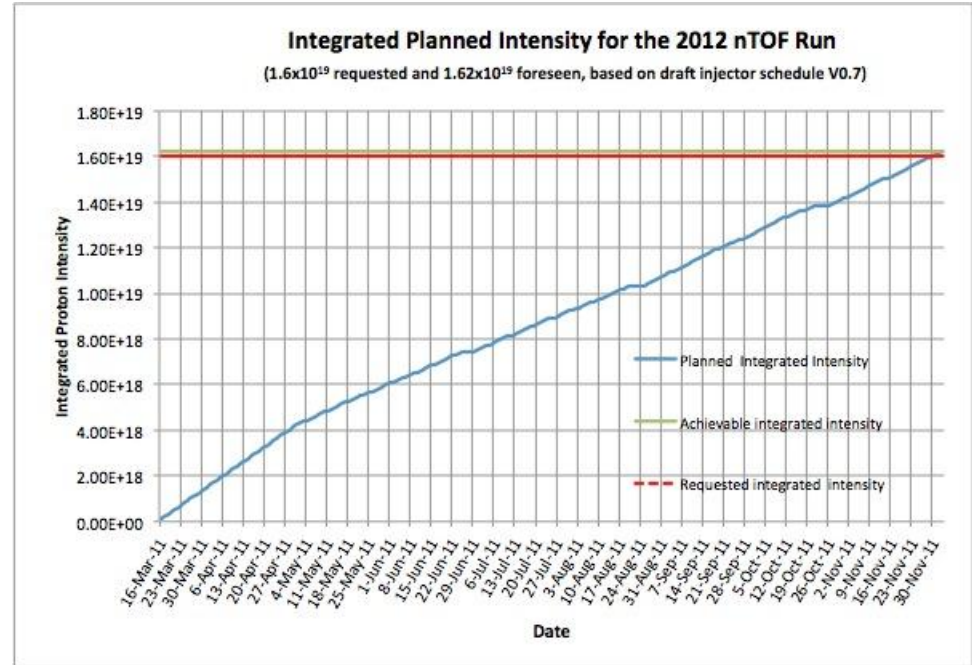
many REX runs scheduled before LS1

20 experiments, 250 shifts

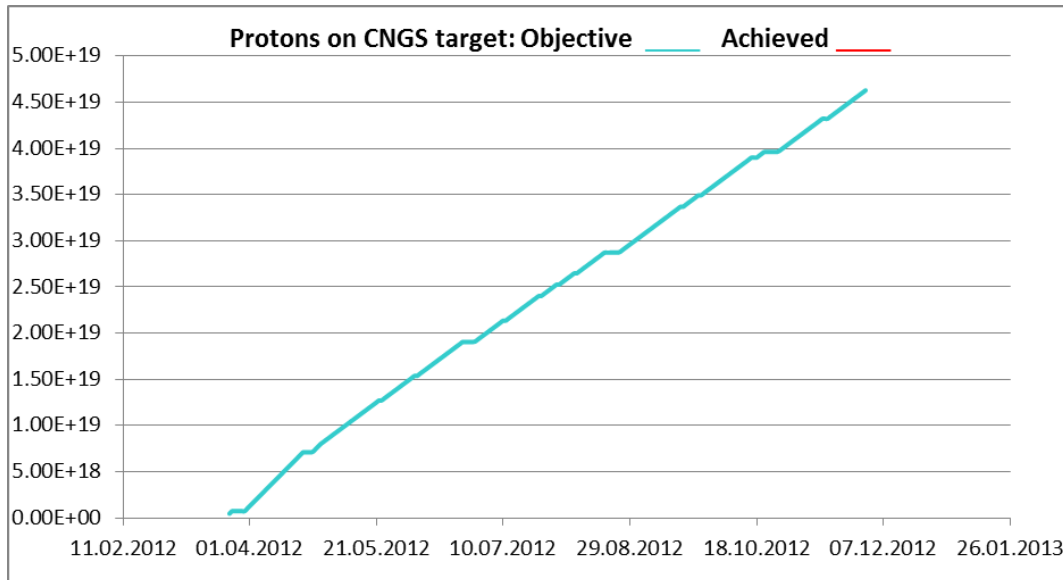
priority: 8 experiments, 164 shifts

preparation for HIE-ISOLDE

D. Voulot



R. Steerenberg



Estimation for protons on CNGS for 2012. The run with bunched beam is not taken into account.

K. Cornelis

Hope to see you soon at the first FOM **14/2** (after Chamonix)