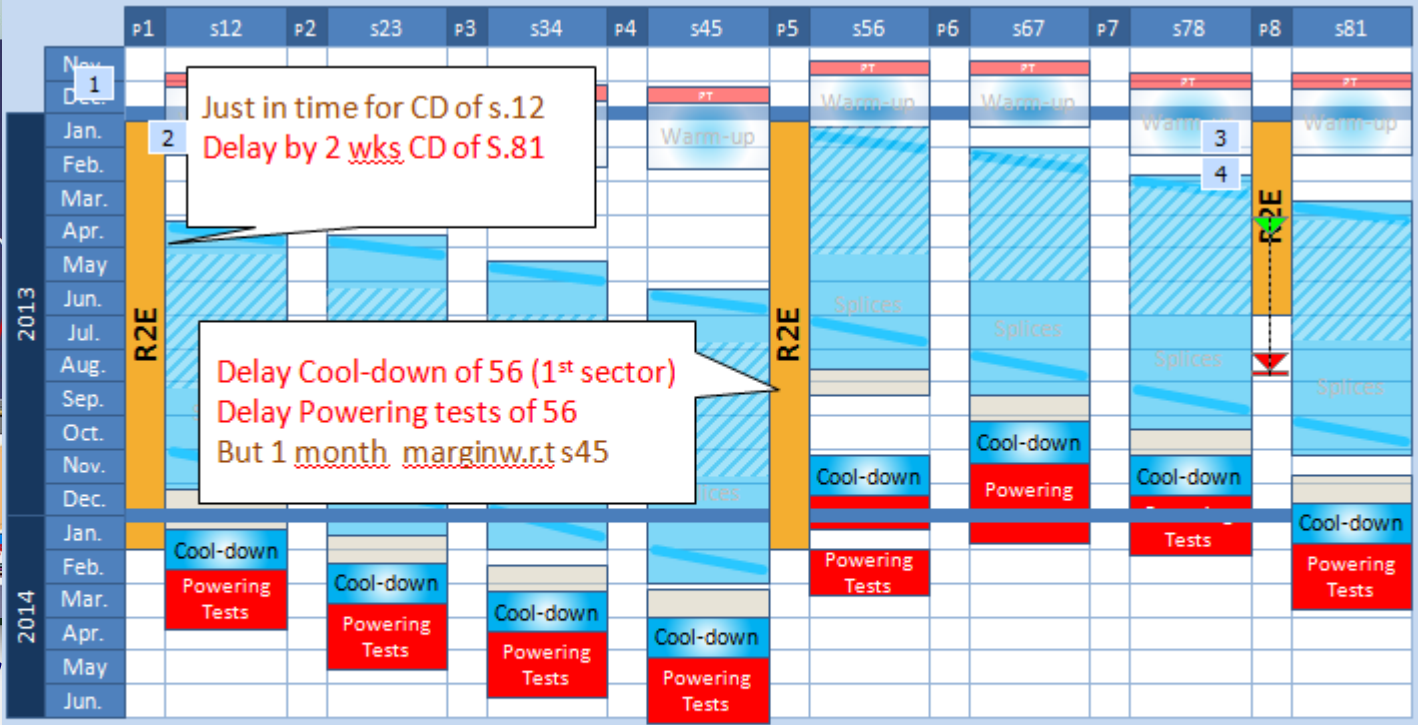
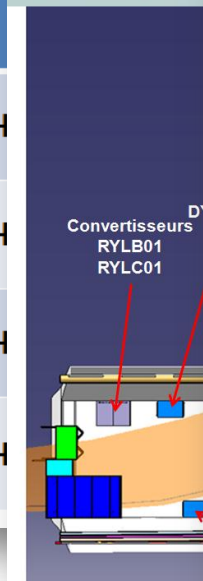


R2E Review Summary

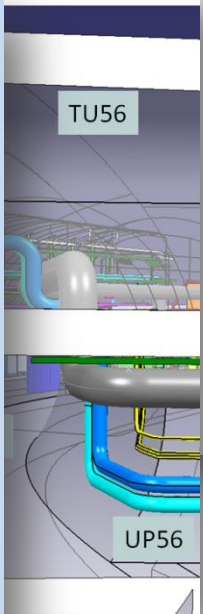
UL16 - 2014/03 -

LH
LH
LH
LH



Just in time for CD of s.12
Delay by 2 wks CD of S.81

Delay Cool-down of 56 (1st sector)
Delay Powering tests of 56
But 1 month margin w.r.t s45



- @ Power
- @ R&D
- @ Integration
- @ Shielding
- @ Strategy &
- @ Tight ma

Powering Tests	Splices	Cool-down
Warm-up	Preparation for cool-down	R2E



R2E Review Feedback

Review

Next

Case

Ra

Power

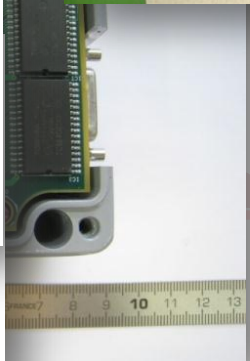
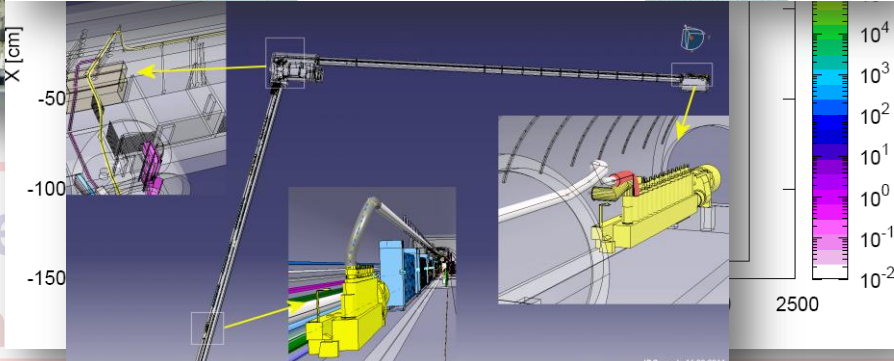
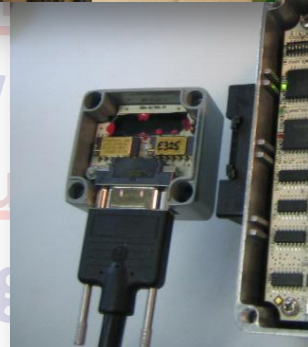
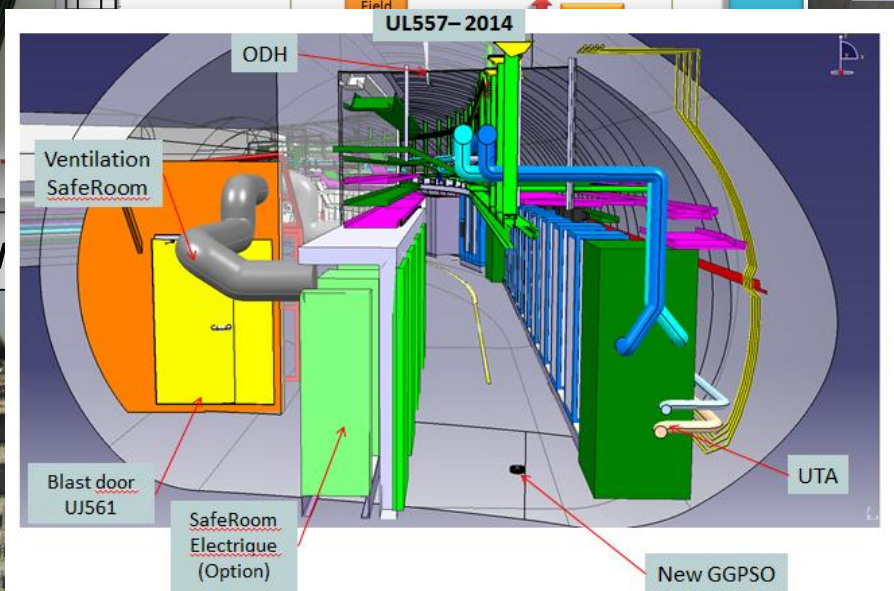
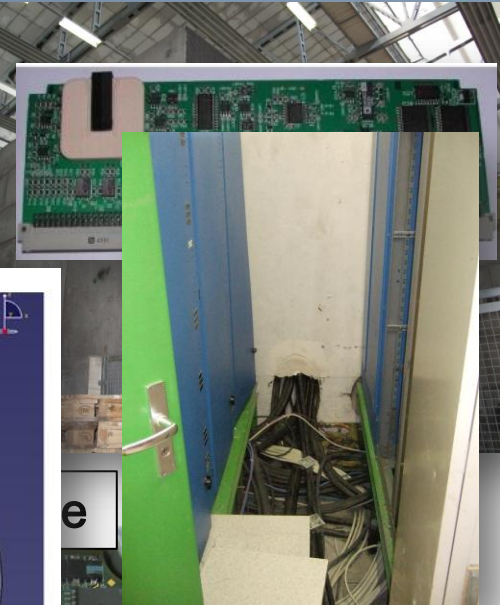
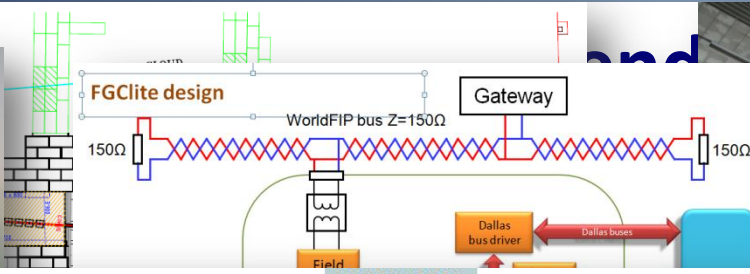
Aut

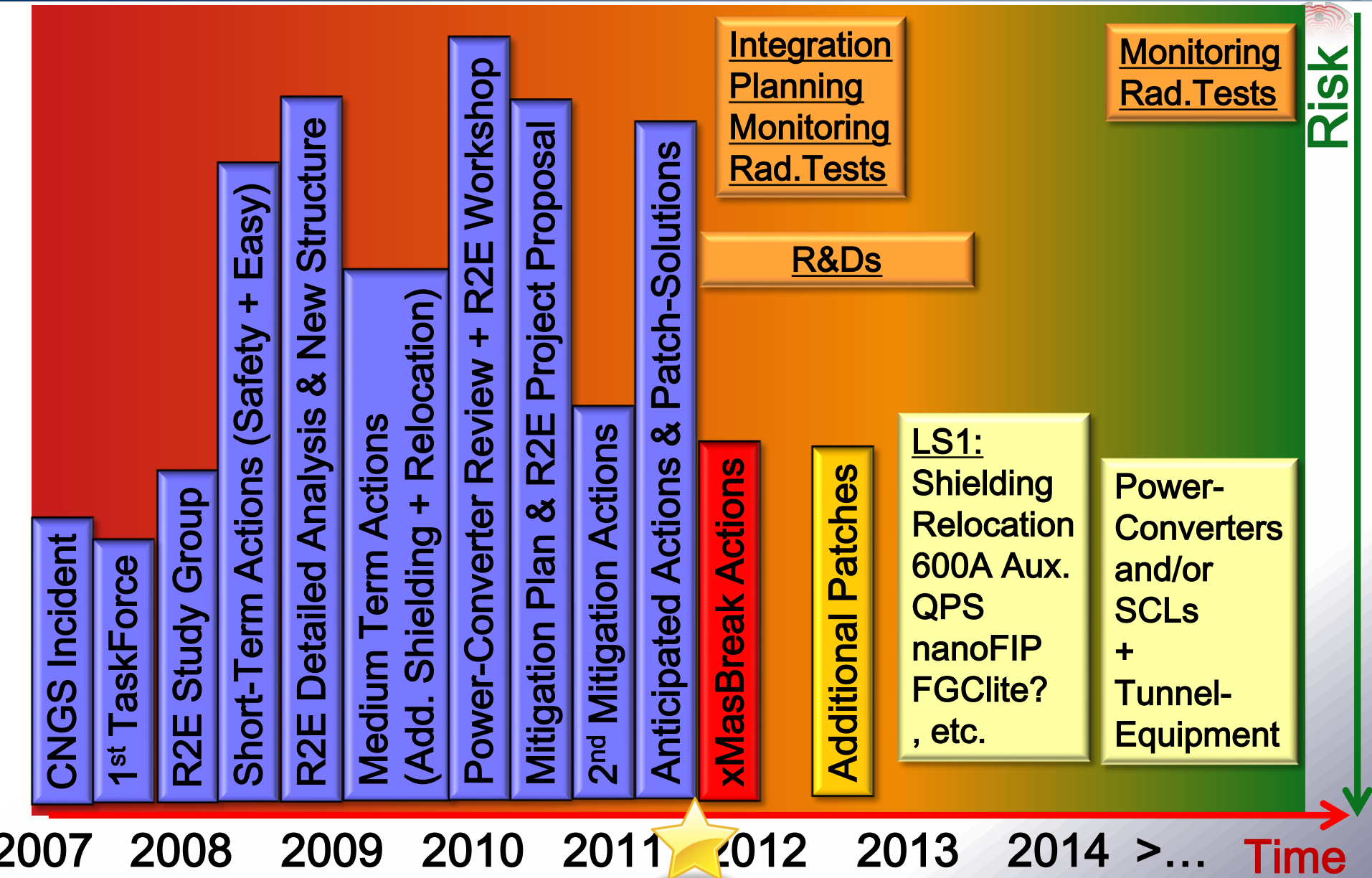
Integ

Safe-Rooms

Strategy & Re

Procurement





- Ⓢ **High-Priority on follow-up of failures during 2012**
- Ⓢ Regular **internal/external design reviews** for all new developments (simple format!)
- Ⓢ **Planning:** what's needed to get additional margin?
- Ⓢ **Resources:** needed/available for 2012?
- Ⓢ R2E measures to include **LHC ultimate & upgrade**
- Ⓢ 25ns and long-term vacuum levels to be studied
- Ⓢ **SCL:** 1st CE pre-study for vertical links (RRs) and integration study to be launched in 2012



Many Thanks

Few News (January 2012)

- @ **Safe-Room:** stand-alone (fire-proof) rack solution
- @ **TZ76:** full length confirmed
- @ **H4IRRAD:** 48days of operation in 2012
- @ **EAIRRAD:**
 - @ SPSC very positive feedback, DIRAC dismantled in 2013
 - @ EA-Day organized on February 1st
- @ **LHC Upgrade:** LHCb to be scheduled for 2018 (x5 in luminosity) -> impact on Safe-Rooms, US/UW85?
- @ **Budget:** update of time profiling (2012 – 2018) first input required prior Chamonix