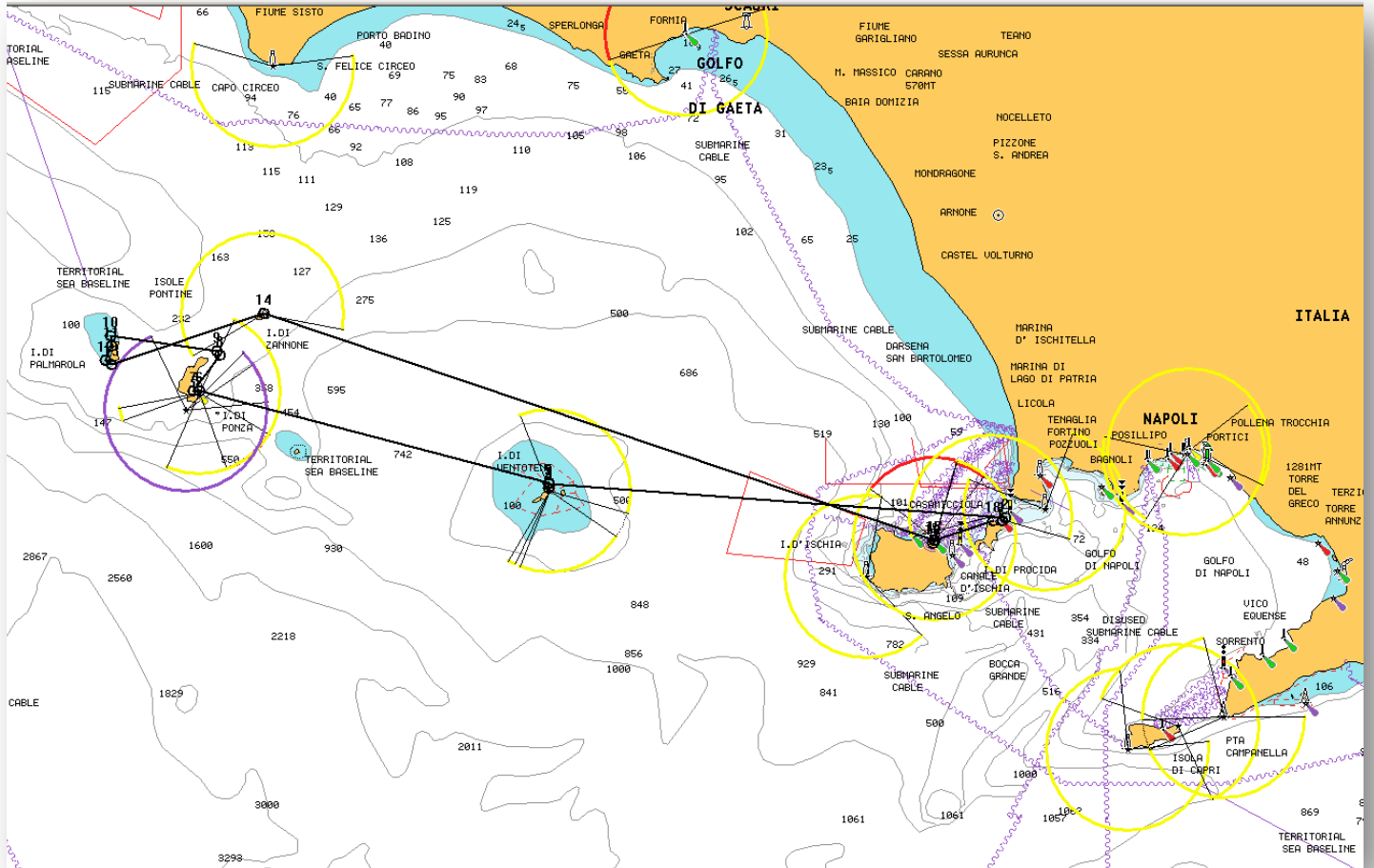


# Pontine Islands



Route Name: **Pontines01** Print Route

Speed to use: **4** knots Fuel consumption: **3** Litres per hour Recalculate Route

Leg	to WP	Latitude	Longitude	Bearing	Distance	Fuel	Leg time (no tides)
1	2	40° 45'.979N	014° 01'.924E				
2	3	40° 46'.167N	014° 02'.187E	46.6°	0.27	0.21	04 mins
3	4	40° 47'.955N	013° 25'.971E	274.2°	27.50	20.62	06 hours 52 mins
4	5	40° 48'.278N	013° 25'.912E	179.5°	0.23	0.17	03 mins
5	6	40° 48'.278N	013° 25'.912E	352.1°	0.33	0.24	04 mins
6	7	40° 53'.832N	012° 58'.242E	284.9°	21.65	16.24	05 hours 24 mins
7	8	40° 53'.783N	012° 57'.771E	262.2°	0.36	0.27	05 mins
8	9	40° 55'.943N	012° 59'.827E	35.7°	2.66	2.00	39 mins
9	10	40° 56'.185N	012° 59'.652E	331.4°	0.28	0.21	04 mins
10	11	40° 57'.138N	012° 51'.150E	278.4°	6.49	4.87	01 hours 37 mins
11	12	40° 56'.529N	012° 51'.235E	174.0°	0.61	0.46	09 mins
12	13	40° 55'.673N	012° 50'.789E	201.5°	0.92	0.69	13 mins
13	14	40° 55'.412N	012° 51'.268E	125.8°	0.45	0.33	06 mins
14	15	40° 58'.485N	013° 03'.373E	71.4°	9.65	7.23	02 hours 24 mins
15	16	40° 44'.815N	013° 56'.490E	108.8°	42.43	31.83	10 hours 36 mins
16	17	40° 44'.623N	013° 56'.454E	188.1°	0.19	0.15	02 mins
17	18	40° 44'.846N	013° 56'.568E	21.1°	0.24	0.18	03 mins
18	19	40° 45'.998N	014° 01'.188E	71.8°	3.68	2.76	55 mins
				Totals	117.95 Nm	88.46 Litres	1 days 05 hours 2... using 4.0 knots (Average speed)