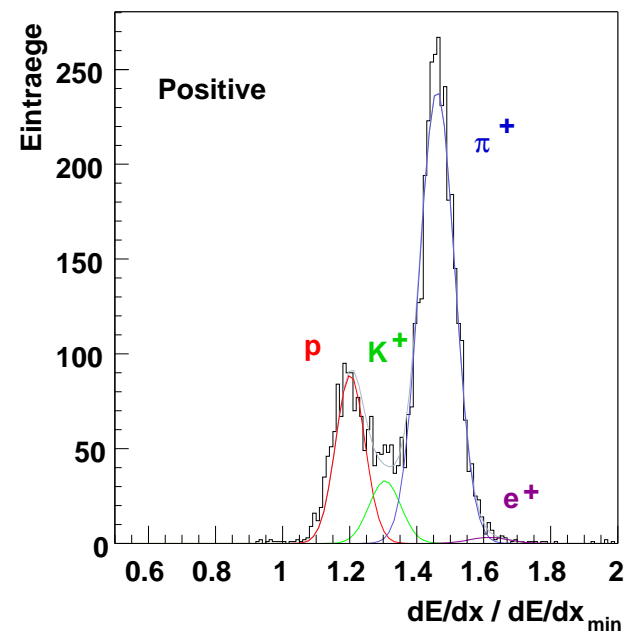
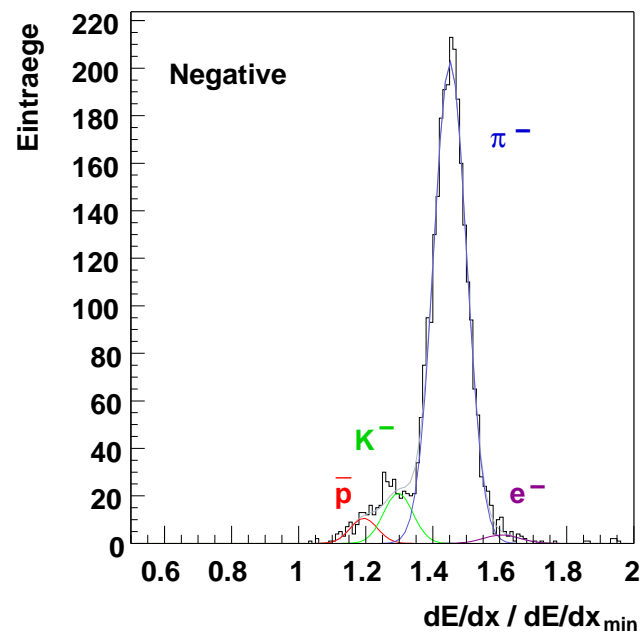


dE/dx calibration of C+C and Si+Si data

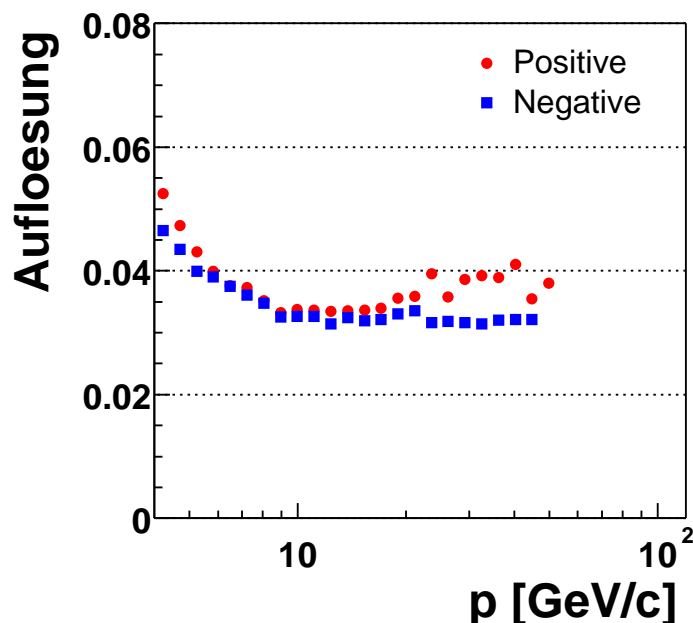
- Si+Si data @ 158 A*GeV
Calibration by Gabor Veres is finished
DSTs are copied to miniDSTs with dE/dx information
- C+C data @ 158 A*GeV
Calibration is in progress
- C+C and Si+Si @ 40 A*GeV are next on Gabors todo list

Si+Si miniDSTs	old	new	Δ
n_{Event}	345,389	384,776	39,387
n_{Event} after event cuts	173,168	192,795	19,627
		no add. run	
events of run 2524	~1,700	~31,400	~29,700
events of run 2531			~1,700

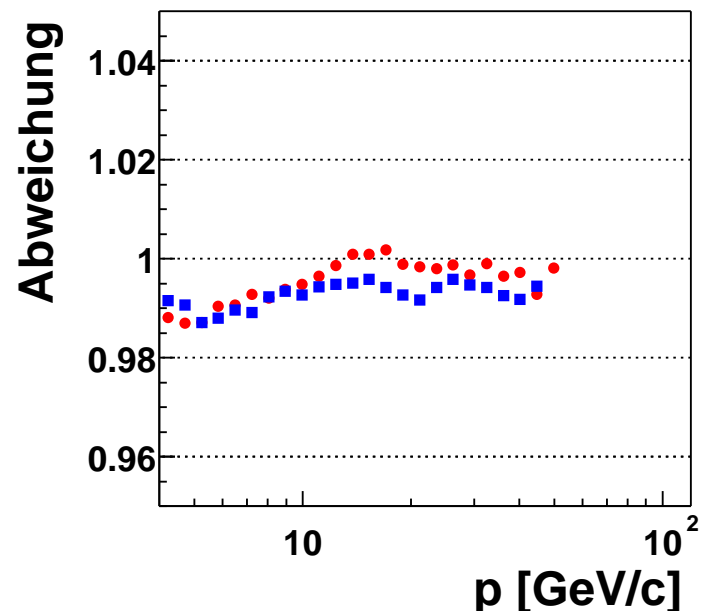
Momentum bin
 $16.1 < p < 18 \text{ GeV/c}$



Resolution better
 than 4% above
 6 GeV/c



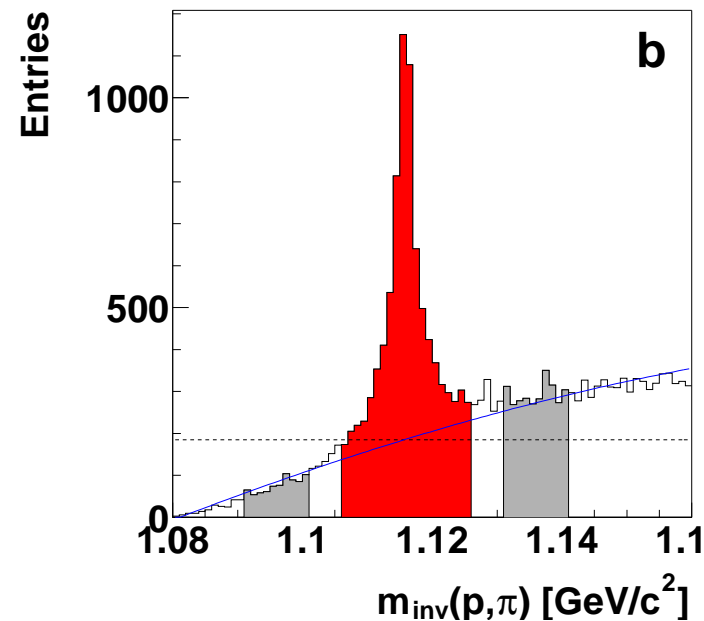
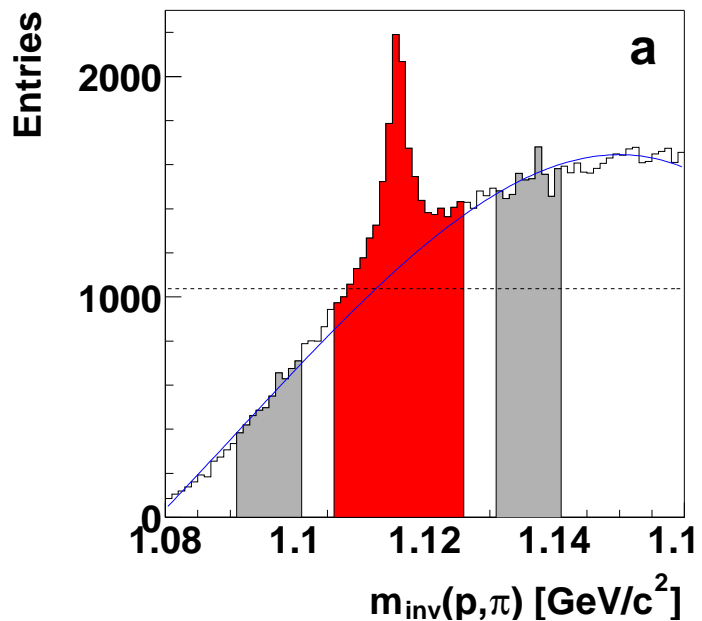
Correction to
 Bethe Bloch
 Parametrisation
 $\sim 1\%$



Antilambda

S/B: 0.27 \rightarrow 1.38

factor 5.1 !



Lambda

S/B: 0.69 \rightarrow 2.18

factor 3.2

