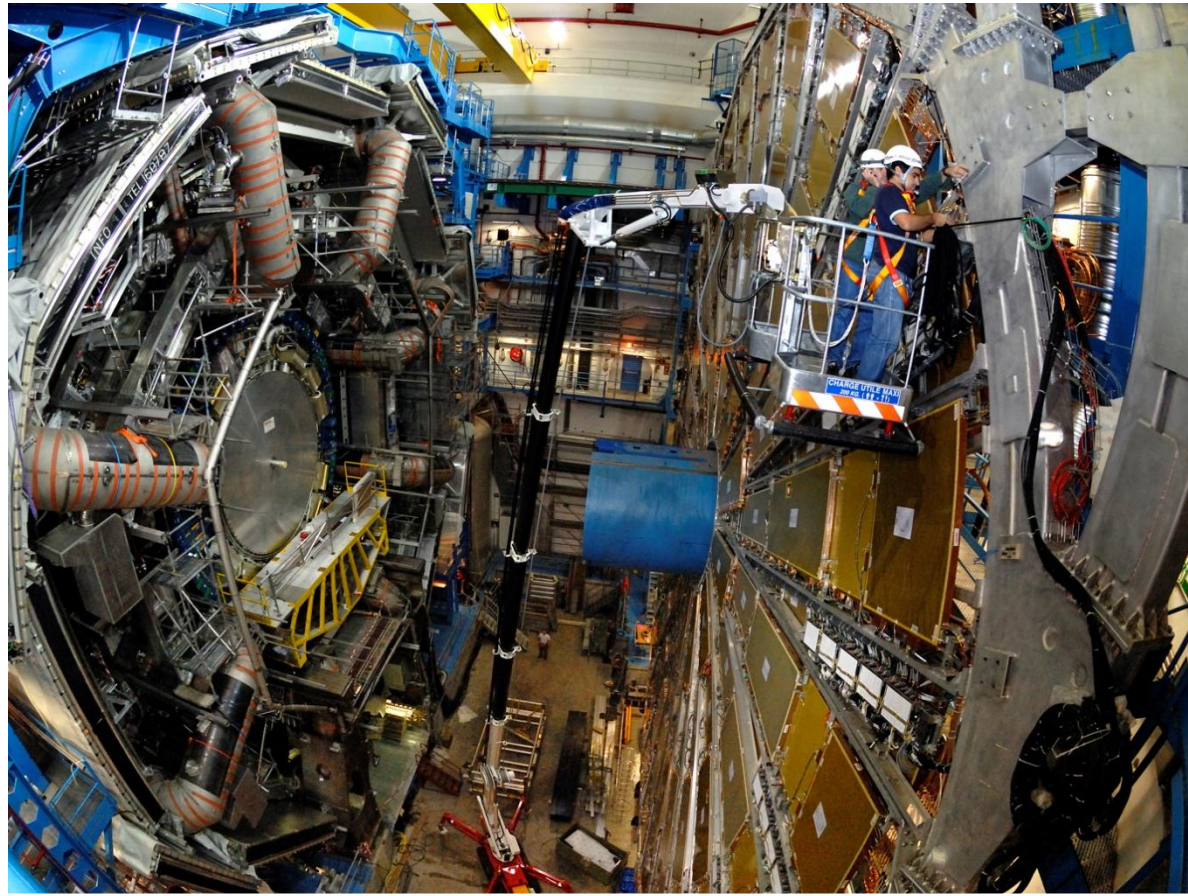


Analysis Flow at the LHC

University of Michigan REU at CERN
Kristina Krylova

Building of the Detector



RAW data



**UNIVERSITÉ
DE GENÈVE**

Dr. Paul Bell

Dr. Stephen Gibson

Reconstructed Data

Physics

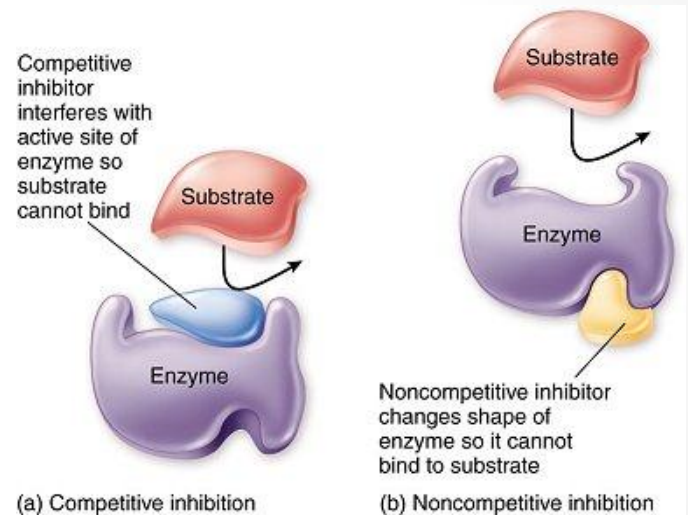


Why Gauge Couplings?

Deviations from SM
gauge couplings



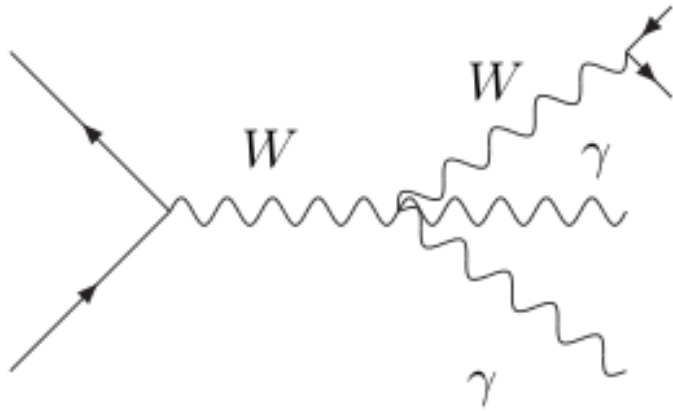
New physics



Carrying out the Analysis



Signal Extraction



- Get analysis started
- Use VBFNLO MC theoretical understanding
- Use AlpGen MC for detector and parton shower corrections
- Compare with 2011 (possibly 2012) data
- **Issue:** low cross section, huge background

In the next months:



Analysis Approval

