

Lappeenranta University of Technology LUT



LUT facts

- Founded in 1969, combining technology and business from the start
- Over 9 500 have obtained a Master's degree in technology or business, and over 400 have obtained a doctorate in technology, business or philosophy
- Approximately 1000 staff members
- Annual budget 71 M Euros 2010
- 5 700 undergraduate students: technology 76%, business administration 24%
- 23% of technology students and 50% of business students are women
- 462 degree students (9%) are foreign nationals, 25% of first-year students in autumn 2011 were foreign nationals
- 62 different nationalities at LUT
- Life-long learning: 1 697 students in continuing professional education, 1 490 students in open university education

RPC Link boards

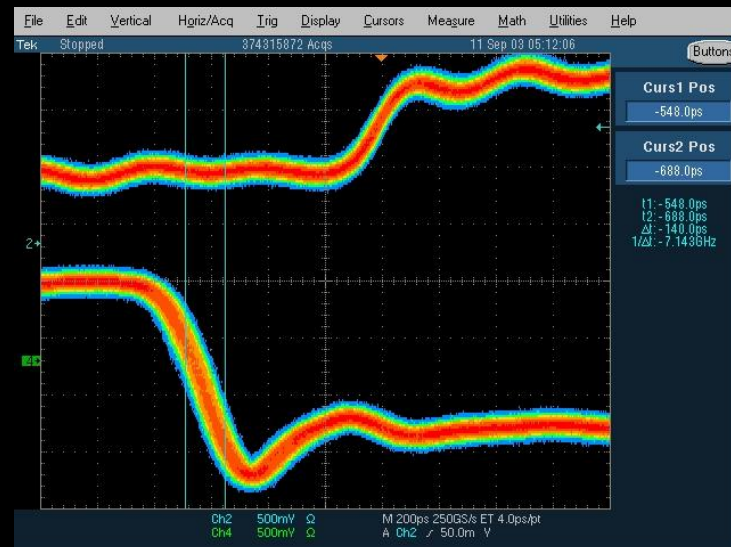
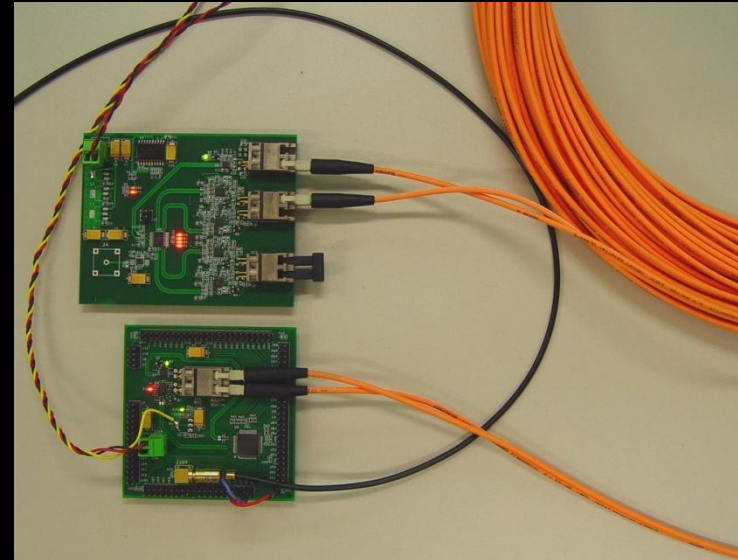
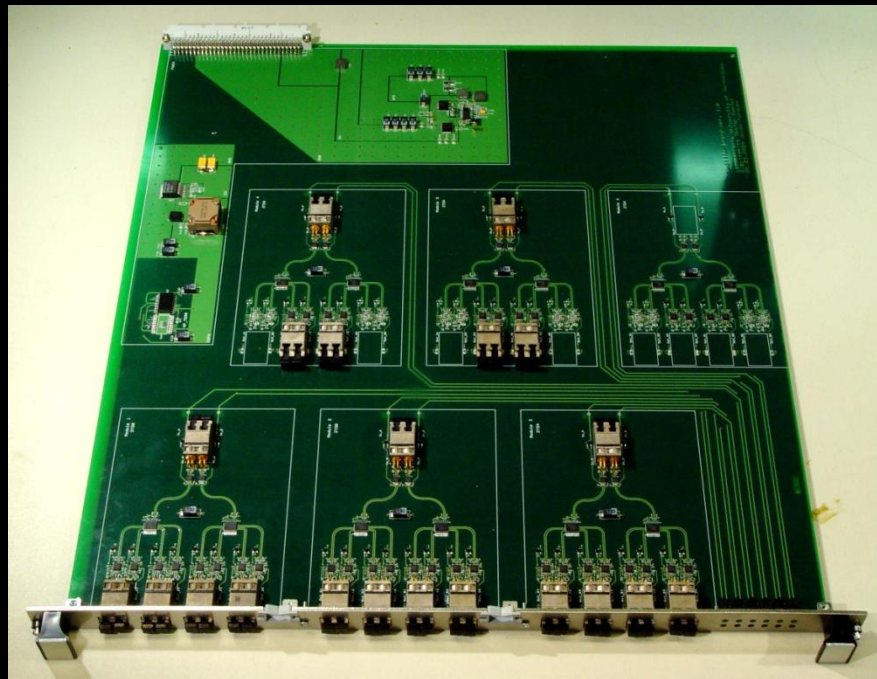
In house facilities for module production
Test equipment for optical fibers up to 10GHz
60 link boards burn in tester setup



Diffrent trancievers have been tested

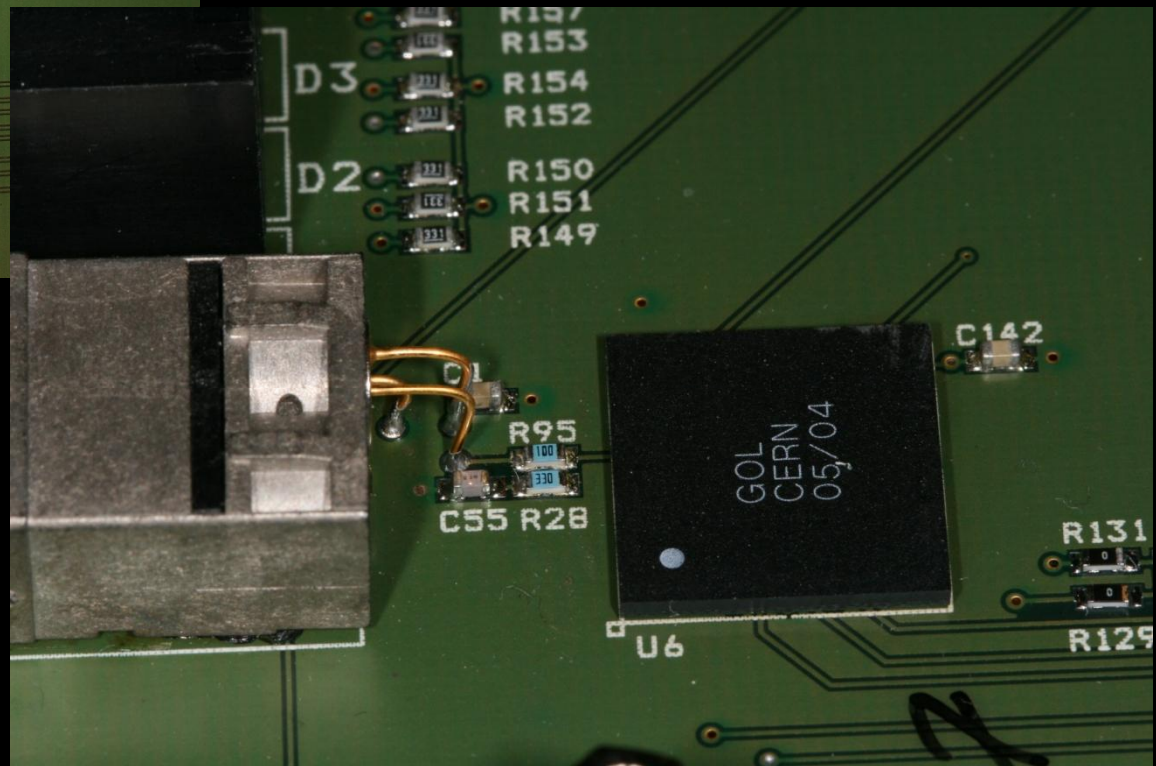
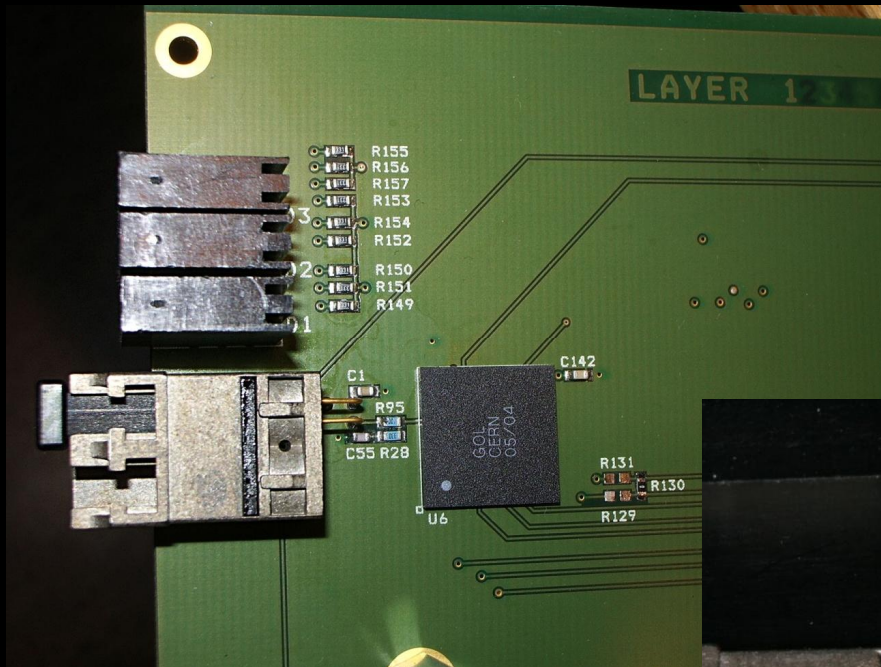
1.6 Gbit optical link splitter BER test board
140pS risetime with 50pS jitter

Splitter



LB Transmitter

Only transmitter laser assembled



Conclusions

Good starting position for GBT opto hybrid development