

Site Update

University of Sussex

Emyr James

Staff

Particle Physics

- Emyr James
- Matthew Mottram

IT Services

- Jeremy Maris
- Tom Armour
- Chris Jenkins

Data Centre

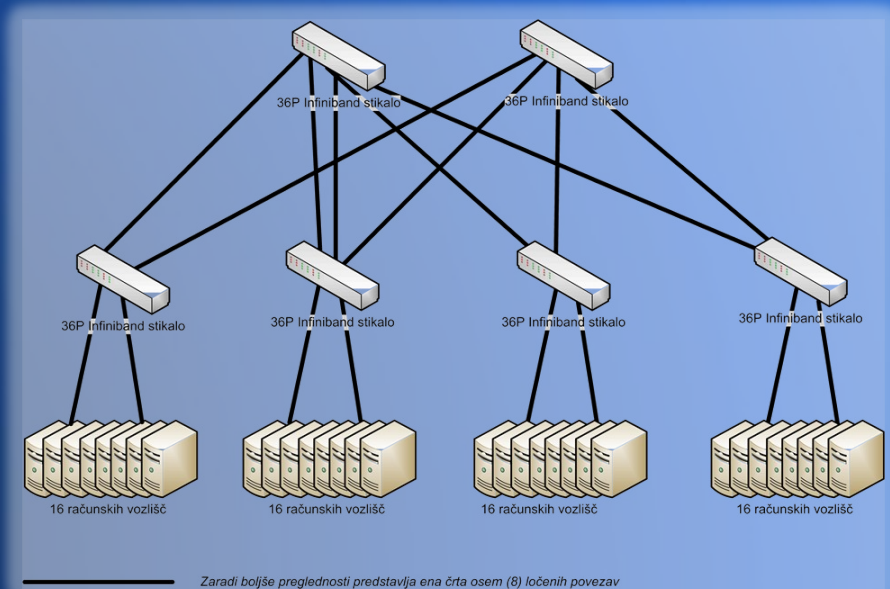


DRI Purchase

- 4 36-port Infiniband switches
(bringing total to 6)
- 20 Infiniband Cards
- Lots of Infiniband Cables!
- Monitoring Box with 2 10GB Cards
- 4 more R510's to expand Lustre FS

Cluster Merge

- Arranged IB switches in Fat Tree topology
- Merged feynman (EPP) and Apollo (ITS) into one Cluster
- Also 2 Other clusters (Blades & Zeus)
- Univa Grid Engine



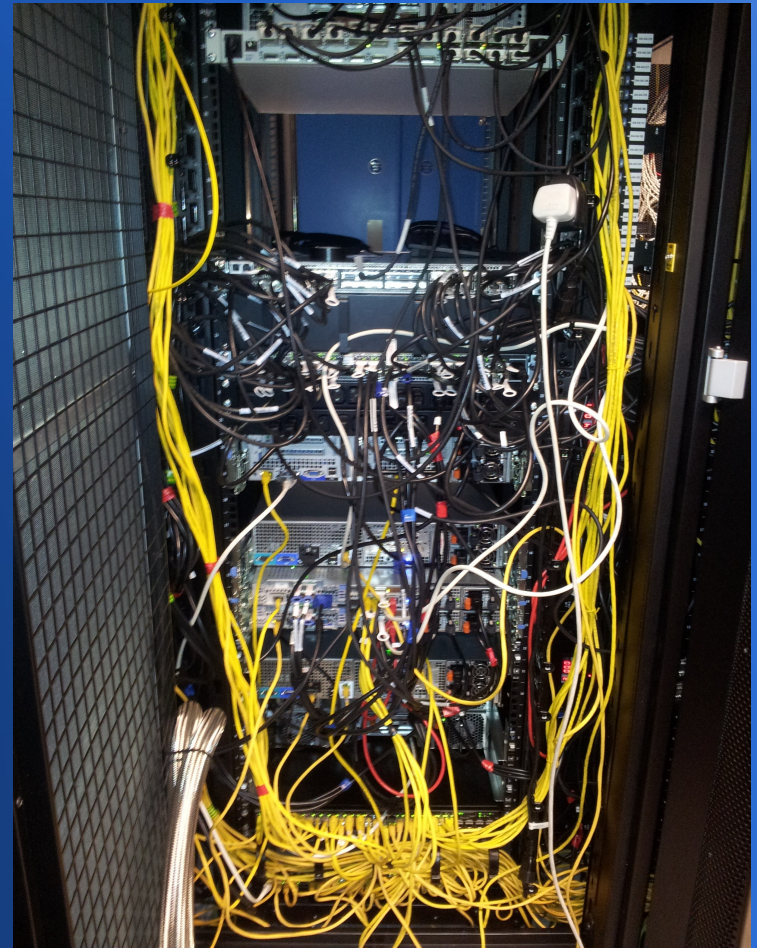
Cluster Merge

- 18 R410's 12 cores
Intel x5650 48GB
RAM (4GB/core)
- 3 C6100's (another
12 nodes as above)
- 2 AMD Nodes –
48Cores, 256GB
RAM
- Loan of C6145



Lustre FS

- Originally 3 R510's with 2 MD1200's each
- 9 OST's (1TB Disks)
- 81TB Formatted
- Added 4 more R510's with 2TB disks
- Total now 144TB
- 7 OSS's 13 OST's



Gridification

- 4 Service Nodes : BDII, Apel, Cream-CE, Storm
- All built, BDII & Storm seem to be working
- Cream-CE : Able to submit, problem with stageout.
- Certification Procedure
- Dteam, Ops, Atlas, Snoplus

Future

- Good relations with ITS and other HPC users
- Internal Mini-Conference / Workshop
- HPC Wiki
- All kit into central pool
- Grid jobs to fill all spaces as well as dedicated hardware
- EPP trying to get £40K in October
- Tier 2 Imminent

Questions?

