

NewFlex GEM foils, QC at KODEL

Sung Park

KODEL
Korea University

GEM foils at NewFlex

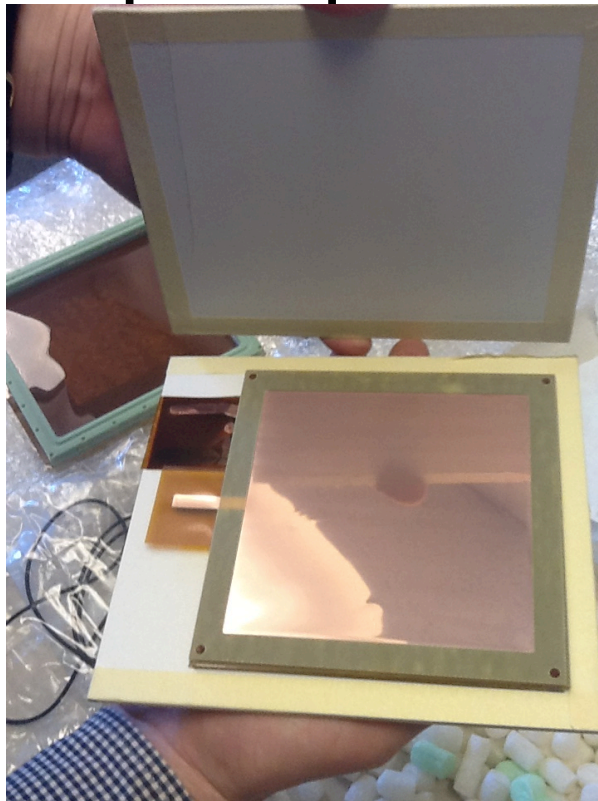
- It all started in June 2011
- First successful foil size 6cm x 6cm
- In December, 20 foils of size 10cm x 10cm were produced and tested at CERN.
- Experienced and Confident
- In June 2012, 30cm x 30cm foils will be produced.

GEM foil Quality Check

- Visual Inspection
 - Non-uniform area, Un-etched area
- Microscope Inspection
 - copper hole diameter: $70 \mu\text{m} \pm 2(5?) \mu\text{m}$
 - kapton hole diameter : $50 \mu\text{m} \pm 5 \mu\text{m}$
- Electrical Test in Free Air
 - High Voltage DC test

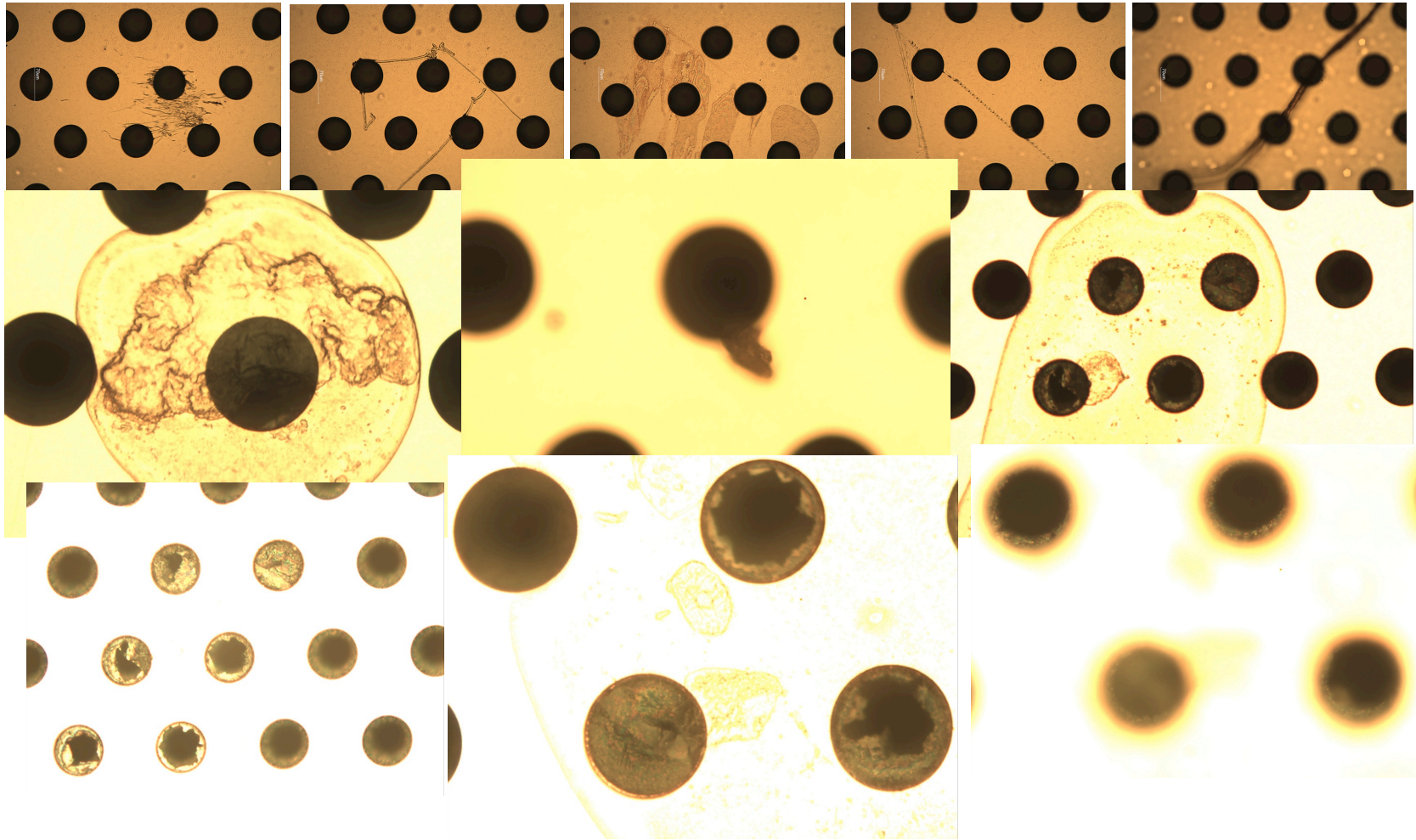
Preparation for QC

- Microscope Inspection

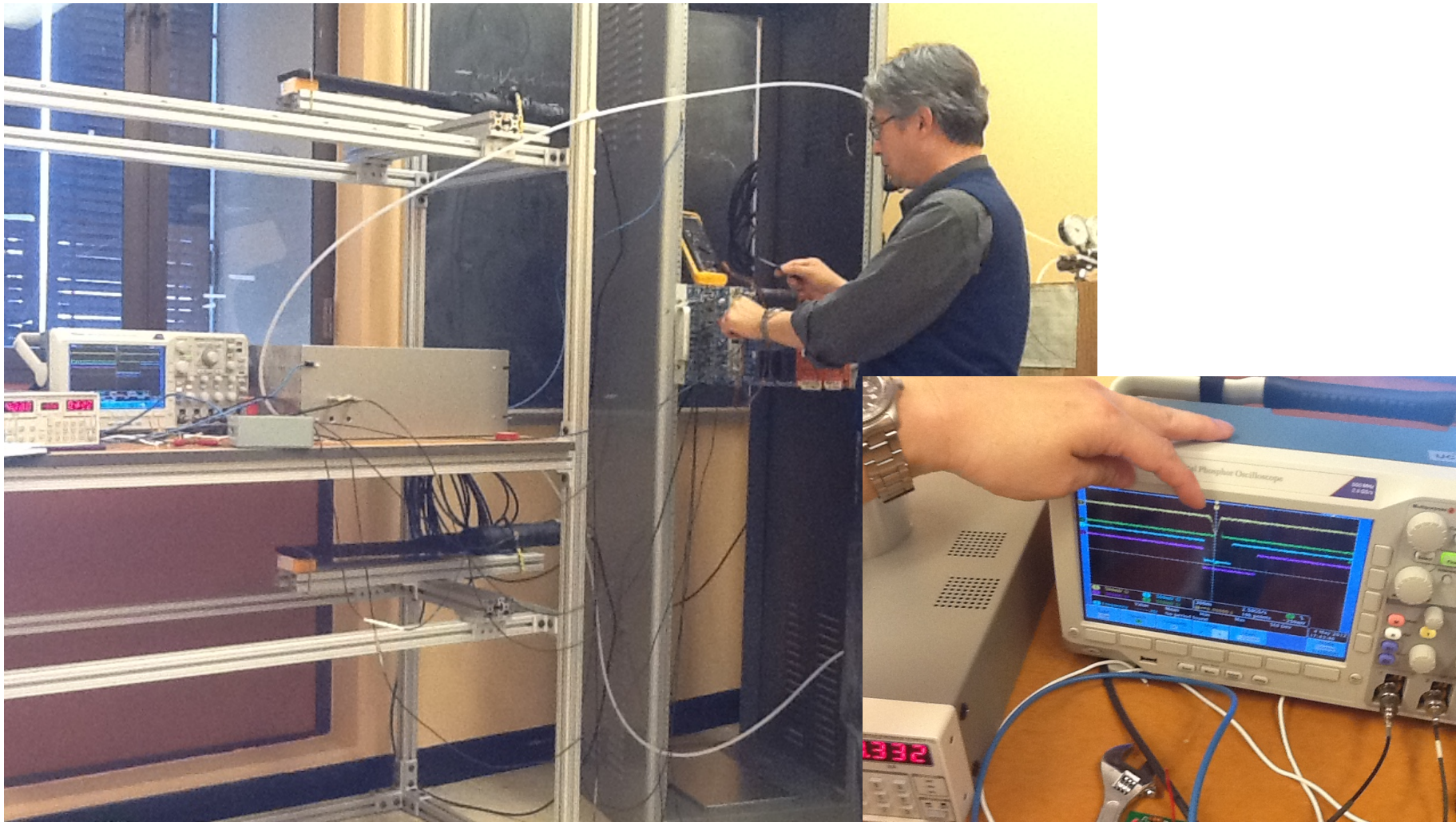


- a GEM foil Rui supplied

Inspection of the foil



HV DC Test



Conclusions

- More experience with GEM foil production.
- QC for GEM is agreed and understood.
- QC ready for the 30 x 30.