

Services IT

Induction

Tim Smith



Mettez-vous au courant !!

- e-payslip

Personal Pay Info
User: Wim VAN LEERSUM

Pay Repository VAN LEERSUM
Current Year
June
Archive

CERN Décompte de paye
Rooney Dennis EH LE TI

PERIODE DE REMUNERATION 01/09/2002 AU 30/09/2002
MONTANT SALARIALE 40,00 MONTANT RECOURSABLE 40,00

DATE	CATEGORIE	LIBELLE	Montant	Taux	AFRANC	ABTENEUR
		TRAVAIL DE BASE	6330,00	12,000	6330,00	
		INDUITE			71,40	
		ALPH. DE BRIGITTE			291,00	
		REMUNERATION BRUTE			6653,00	
		CONTRIB. PENSION	853,00	10,120		853,00
		CENTR. MSA - MALADIE	630,00	4,020		598,00
		ASSURANCE-VIE	10000,00			60,00
		TRAIITEMENT NET			7533,00	1242,00
					6381,00	REVENIR VITILLIET

MONTANT CREDITE LE 25/09/2004 A VOIRE COMPTE UBS SA TS-3814676

CERN Décompte de congé
Rooney Dennis EH LE

DATE	COMPTE	CREDIT	SOLDE
		en francs	en jours de congés
11/09/2004	CNCE: ANNUEL	+116,00	+122,00
11/09/2004	CNCE: EPUISE		-119,75



2006/00/01

Services IT: Tim.Smith@cern.ch

2 de 13

Mettez-vous au courant !!

- e-payslip
- Notifications

Subject	date	newsgroup
! EDH unavailable until 10:30am	25-August-05 09:26:47	cern.alerts
All Windows 2000 SP3 computers forced to upgrade to W2000 SP4 this monday	12-August-05 17:30:08	cern.nice2000
New Windows Security Patches: MS05-038 to MS05-043	10-August-05 12:17:35	cern.nice2000
Deployment of .Net Framework on Windows 2000 computers	03-August-05 20:18:31	cern.nice2000
Nice Alerter	26-July-05 18:38:58	cern.nice2000

All Windows 2000 SP3 computers forced to upgrade to W2000 SP4 this monday
From: "Michel Christaller" <Michel.Christaller@cern.ch>

An exploit has been recently published for a vulnerability in Windows 2000 SP3 (Service pack 3) and lower versions. If unpatched, this vulnerability allows an attacker to take complete control of the affected system.

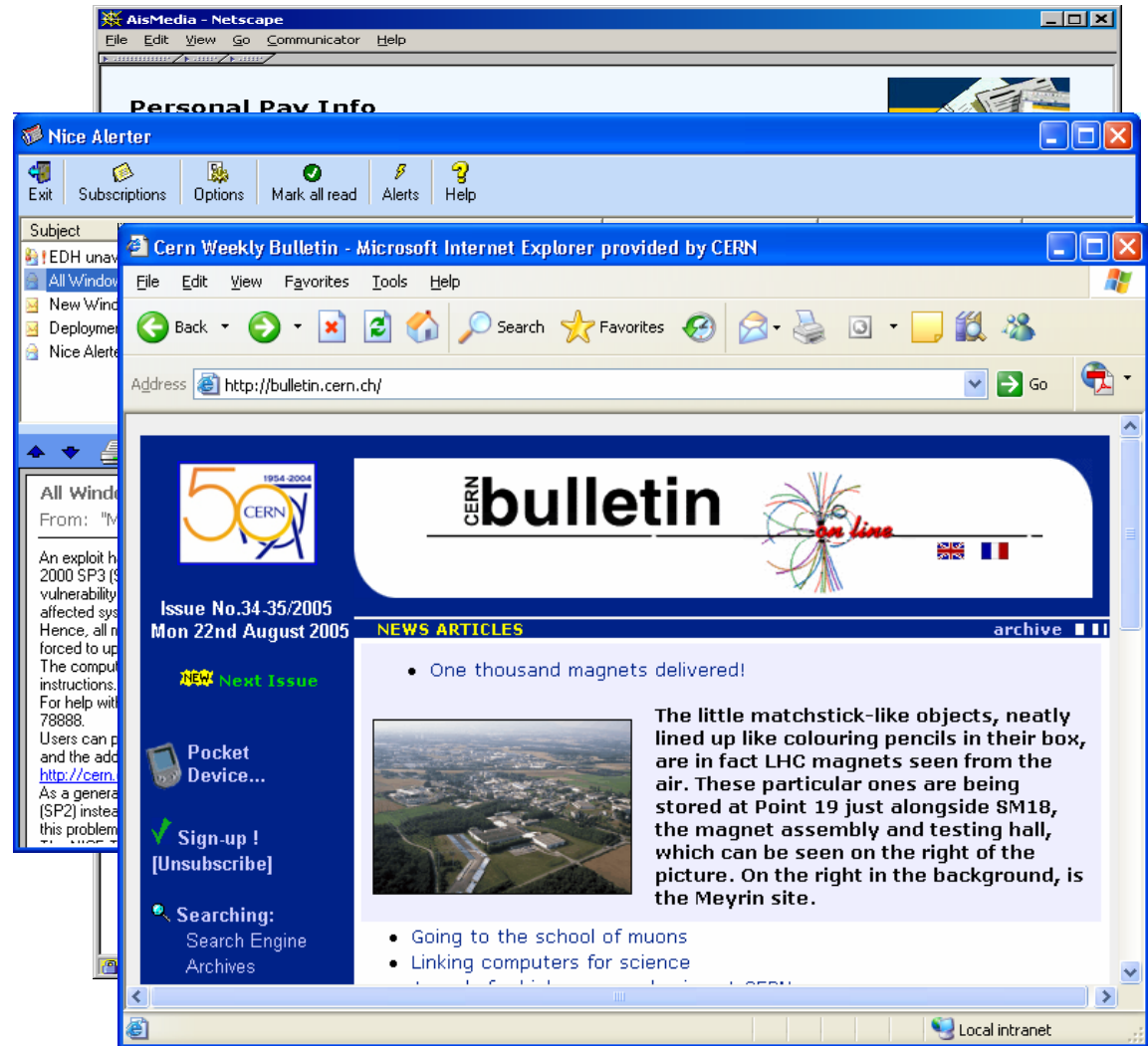
Hence, all machines running Windows 2000 SP3 and lower versions will be forced to upgrade to Windows 2000 SP4 starting this Monday August 15th. The computers requiring this update will receive a pop-up window with instructions. Installation will proceed and the computer will reboot. For help with the update, users can contact Helpdesk@cern.ch or call 78888.

Users can proactively update their computers following the instructions and the additional information available at <http://cern.ch/Win/Docs/2000SP3>.

As a general recommendation, users are encouraged to use Windows XP (SP2) instead of Windows 2000. Windows XP computers are not affected by this problem.

Mettez-vous au courant !!

- e-payslip
- Notifications
- e-bulletin



2006/00/01

Services IT: Tim.Smith@cern.ch

4 de 13

Obtenir un compte

- Contactez l'administrateur informatique de votre équipe
 - En général, le secrétariat de votre département ou expérience
- Procurez-vous 2 documents:
 - OC5: « Règles CERN d'utilisation ordinateurs, réseaux et services informatiques »
 - Formulaire d'enregistrement d'utilisateur
 - Complétez et retournez à l'administrateur informatique
 - Qui crée le compte
- Renvoyez le formulaire au « Enregistrement d'utilisateurs IT » (fax/mail)
 - Pour validation et enregistrement dans le DB
 - **Pour faire activez votre compte**

➤ <http://cern.ch/it-dep/comp-usage>





Accès à l'informatique

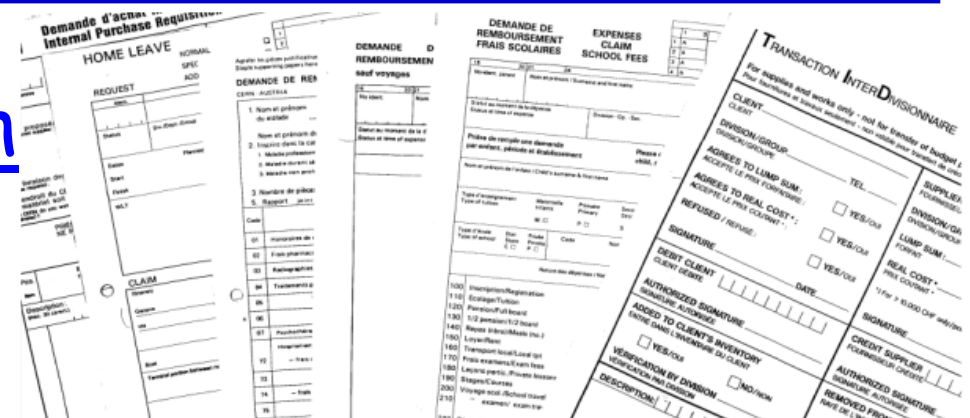


- DeskTop supportés / recommandés
 - **Windows** XP / Scientific **Linux** CERN
- Machines gérées de façon centrale
 - Répertoires Home, départementaux
 - DFS et AFS
- Mail (listbox) <http://cern.ch/mmm>
- Web <http://cern.ch/webservices>
- Services centraux
 - Login services eg LXPLUS
 - Applications / outils pour la Physique et Ingénierie
- **Convergence sur login NICE**



Informatique Administrative

- <http://edh.cern.ch>
 - Prendre congé



Leave Request - Netscape

File Edit View Go Communicator Help

Leave Request

Requestor*: James PURVIS (AS-IDS)

Show values in: 8 Hour Days

Balances	Forecast	Current	Previous	November 2000						
Annual Leave	27.00	2.00	2.00	Mo	Tu	We	Th	Fr	Sa	Su
Saved Leave		48.03	48.03			1	2	3	4	5
Compensation		5.00	5.00	6	7	8	9	10	11	12
Reduced Schedule				13	14	15	16	17	18	19
Other				20	21	22	23	24	25	26
Illness				27	28	29	30			
Official Holiday										

Document: Done



- <http://edh.cern.ch>
 - Prendre congé
 - Achat de matériel
 - Demande de formation
 - Demande de voyage
 - Demande de téléphone et d'abonnement
 - Demande d'accès

Balances	Forecast	Current	Previous
Annual Leave	27.00	2.00	2.00
Saved Leave		48.03	48.03
Compensation		5.00	5.00
Reduced Schedule			
Other			
Illness			
Official Holiday			

November 2000						
Mo	Tu	We	Th	Fr	Sa	Su
		1	2	3	4	5
6	7	8	9	10	11	12
13	14	15	16	17	18	19
20	21	22	23	24	25	26
27	28	29	30			



Informatique Administrative

- <http://edh.cern.ch>
 - Prendre congé
 - Achat de matériel
 - Demande de formation
 - Demande de voyage
 - Demande de téléphone et d'abonnement
 - Demande d'accès

■ <http://hrt.cern.ch>

➤ <http://cern.ch/ais/apps>

webHRT
Access Rights and Safety
Training

Date: 30 Aug 2005
Person Id Timothy John SMITH (IT-UDS)

Personal Information:

Name: SMITH
First Name: TIMOTHY JOHN
CERN Id:
Primary Nationality: GB
Department: IT
Group: UDS
Experiment:
Telephone 1:
Film Badge: N



Contract Information:

Status: STAFF MEMBER
Contract Start:
At Cern: Y
Contract End:
Projected Contract End:

Cern Card Information: [View History](#)

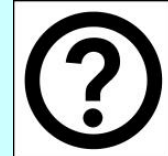
Card Type:
Start Date:
Sequence Number (Validation): 1
End Date:

Access Rights		Safety Courses	
Type	Description	Type	Description
Building 513 outside working hours	Course(s) required: Level 1 (Newcomers)	B513	Level 1 (Newcomers) Level 2 (Newcomers)
Building 600 outside working hours	Course(s) required: Level 1 (Newcomers)	B600	
CERN vehicle driving license	Course(s) required: Level 1 (Newcomers)	V	
Computer Centre	Course(s) required: Level 1 (Newcomers)	CC1	
Tunnel Transit authorization		T	





Bureau d'aide aux utilisateurs



- Ouverture: 08:30-17:30
 - Tel 78888
 - Email helpdesk@cern.ch

- DeskTop Support
 - Installation
 - Résolution des problèmes

➤ <http://cern.ch/it-servicestatus>



Plus d'information

- CERN home



2006/00/01

Services IT: Tim.Smith@cern.ch

11 de 13



Plus d'information

- CERN home
- IT home
 - Tutorials
 - Webcasts

CERN IT Department - Microsoft Internet Explorer provided by CERN

Address: <http://it-div.web.cern.ch/it-div/>

IT Services and Projects

For information on the current status of all IT services look at the [IT Service Status Board](#) and the [Dynamic Information page](#) (provided by all services).

Department Information

- What We Do
- Department Structure
- Administration
- Minutes & Reports
- Safety in IT
- Job Opportunities

More on Computing

- CERN School of Computing
- Colloquia
- Seminars
- Newsletter
- Bookshop

Access to Computing Facilities

Shortcuts*: [Account Registration](#) | [If You Need Help](#) | [Rules & Regulations](#) | [Computer Security](#) | [CERN Licensed Software](#)

Desktop and Portable Computers

Shortcuts*: [Email](#), [Spam Fight](#) | [Network Access](#) | [Linux](#) | [Macintosh](#) | [NICE 2000 & XP](#) | [PC Acquisition](#), [PC Rental](#) | [Printing](#) | [Visitors' Portables](#) | [Web Services](#) | [File Transfers](#)

Administrative Information Services (AIS)

Shortcuts*: [Welcome and News](#) | [CET](#) | [CFU](#) | [EDH](#) | [e-RT](#) | [EVM](#) | [HRT](#) | [Stores Catalogue](#)

Physics Computing**

(Interactive and Batch Computing, Data Management, Applications and Libraries, Software Development, LHC Developments and the Grid)

Shortcuts*: [AFS](#) | [CASTOR](#) | [CDR](#) | [CVS](#) | [GEANT4](#) | [LSF](#), [Ixbatch](#) | [Ixplus](#)

Technical Computing

News

- Archived News

Newsgroups

- cern.computing
- cern.nice (2000)
- CERN Newsgroups

Useful Links

- [IT Service Status Board](#)
- If you need help
- [CERN Document Server](#)
- [Conference Room Bookings](#)
- [Computer Newsletter \(CNL\)](#)
- [Weekly Bulletin](#)

Major Projects

- [LHC Computing Grid \(LCG\)](#)



2006/00/01

Services IT: Tim.Smith@cern.ch

12 de 13



Plus d'information

- CERN home
- IT home

- Tutorials
- Webcasts

- IT flyer

- <http://cern.ch/it-dep/need-help>

