

IT Services

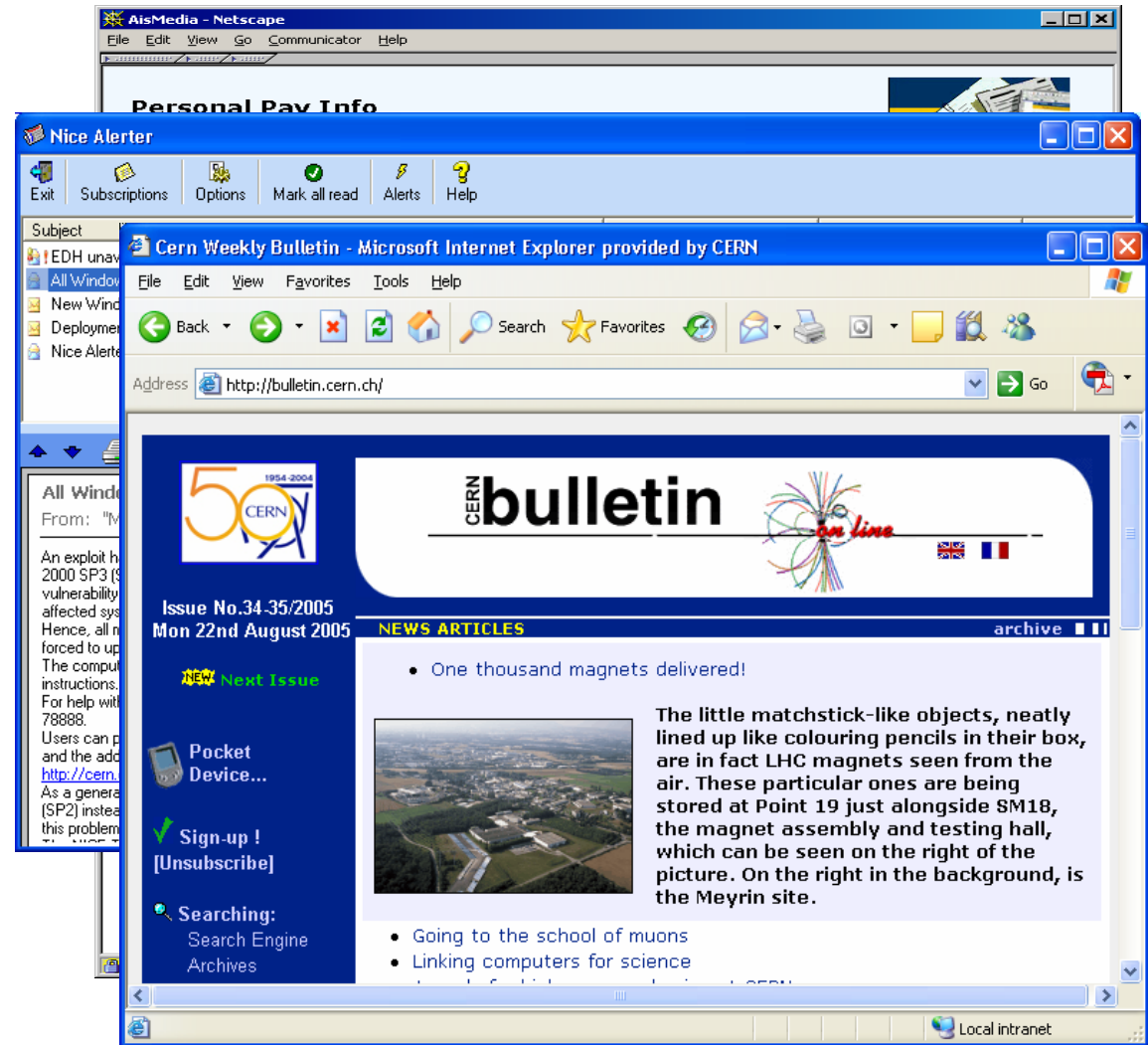
Induction

Tim Smith



Be Connected !!

- e-payslip
- Notifications
- e-bulletin



2006/00/01

IT Services: Tim.Smith@cern.ch

2 of 7

Obtaining an Account

- Contact your team's Computing Administrator
 - Typically departmental/experimental secretariat
- Obtain 2 forms:
 - OC5: "Rules for Use of CERN Computing Facilities"
 - User Registration Form
 - Complete and return to Computing Administrator
 - creates account
- Return form to User Registrar (fax/mail)
 - validation and entry in DB
 - **Enable account**

➤ <http://cern.ch/it-dep/comp-usage>





Access to computing



- Supported / recommended DeskTops
 - **Windows** XP / Scientific **Linux** CERN
- Centrally managed machines
 - Home directories, departmental repositories
 - DFS and AFS
- Mail (listbox) <http://cern.ch/mmm>
- Web <http://cern.ch/webservices>
- Central Services
 - Login services eg LXPLUS
 - Applications / tools for Physics and Engineering
- **Convergence on NICE login**





Administrative Computing

- <http://edh.cern.ch>
 - Take leave
 - Purchase material
 - Training request
 - Travel claim
 - Request phone & subscription
 - Access request

■ <http://hrt.cern.ch>

➤ <http://cern.ch/ais/apps>

webHRT
Access Rights and Safety
Training

Date: 30 Aug 2005
Person Id Timothy John SMITH (IT-UDS)

Personal Information:

Name: SMITH
First Name: TIMOTHY JOHN
CERN Id:
Primary Nationality: GB
Department: IT
Group: UDS
Experiment:
Telephone 1:
Film Badge: N



Contract Information:

Status Description: STAFF MEMBER
Contract Start:
At Cern: Y
Contract End:
Projected Contract End

Cern Card Information: [View History](#)

Card Type:
Start Date:
Sequence Number (Validation): 1
End Date:

Access Rights		Safety Courses	
Type	Description	Type	Description
	Building 513 outside working hours Course(s) required: Level 1 (Newcomers)	B31	Level 1 (Newcomers) Level 2 (Newcomers)
	Building 513 outside working hours Course(s) required: Level 1 (Newcomers)	B513	
	Building 600 outside working hours Course(s) required: Level 1 (Newcomers)	B600	
	CERN vehicle driving license Course(s) required: Level 1 (Newcomers)	V	
	Computer Centre Course(s) required: Level 1 (Newcomers)	CC1	
	Tunnel Transit authorization	T	





Computing HelpDesk



- Open 08:30-17:30
 - Tel 78888
 - Email helpdesk@cern.ch

- DeskTop Support
 - Installation
 - Problem resolution

➤ <http://cern.ch/it-servicestatus>



More Information

- CERN home
- IT home

- Tutorials
- Webcasts

- IT flyer

- <http://cern.ch/it-dep/need-help>

CERN Users' pages - Microsoft Internet Explorer provided by CERN

CERN IT Department - Microsoft Internet Explorer provided by CERN

File Edit View Favorites Tools Help

Back Forward Stop Home Search Favorites Refresh Print Mail Printers and Faxes Local intranet

Address <http://it-div.web.cern.ch/it-div/> Go

CERN IT Department CERN Home IT Home Sitemap Phonebook Need Help

Find

All CERN
IT Department

IT Services and Projects

For information on the current status of all IT services look at the [IT Service Status Board](#) and the [Dynamic Information page](#) (provided by all services).

Department Information

- What We Do
- Department Structure
- Administration
- Minutes & Reports
- Safety in IT
- Job Opportunities

More on Computing

- CERN School of Computing
- Colloquia
- Seminars
- Newsletter

Access to Computing Facilities

Shortcuts*: [Account Registration](#) | [If You Need Help](#) | [Rules & Regulations](#) | [Computer Security](#) | [CERN Licensed Software](#)

Desktop and Portable Computers

Shortcuts*: [Email](#), [Spam Fight](#) | [Network Access](#) | [Linux](#) | [Macintosh](#) | [NICE 2000 & XP](#) | [PC Acquisition](#), [PC Rental](#) | [Printing](#) | [Visitors' Portables](#) | [Web Services](#) | [File Transfers](#)

Administrative Information Services (AIS)

Shortcuts*: [Welcome and News](#) | [CET](#) | [CFU](#) | [EDH](#) | [e-RT](#) | [EVM](#) | [HRT](#) | [Stores Catalogue](#)

News

- Archived News

Newsgroups

- cern.computing
- cern.nice (2000)
- CERN Newsgroups

Useful Links

- [IT Service Status Board](#)
- If you need help
- [CERN Document Server](#)
- [Conference Room Bookings](#)
- [Computer Newsletter \(CNL\)](#)
- [Weekly Bulletin](#)

Major Projects

- [LHC Computing Grid \(LCG\)](#)

Publications and the Grid)

...batch | lplusplus

Technical Computing

Local intranet

