



Enabling Grids for E-science

# Current experience with the gLite release process

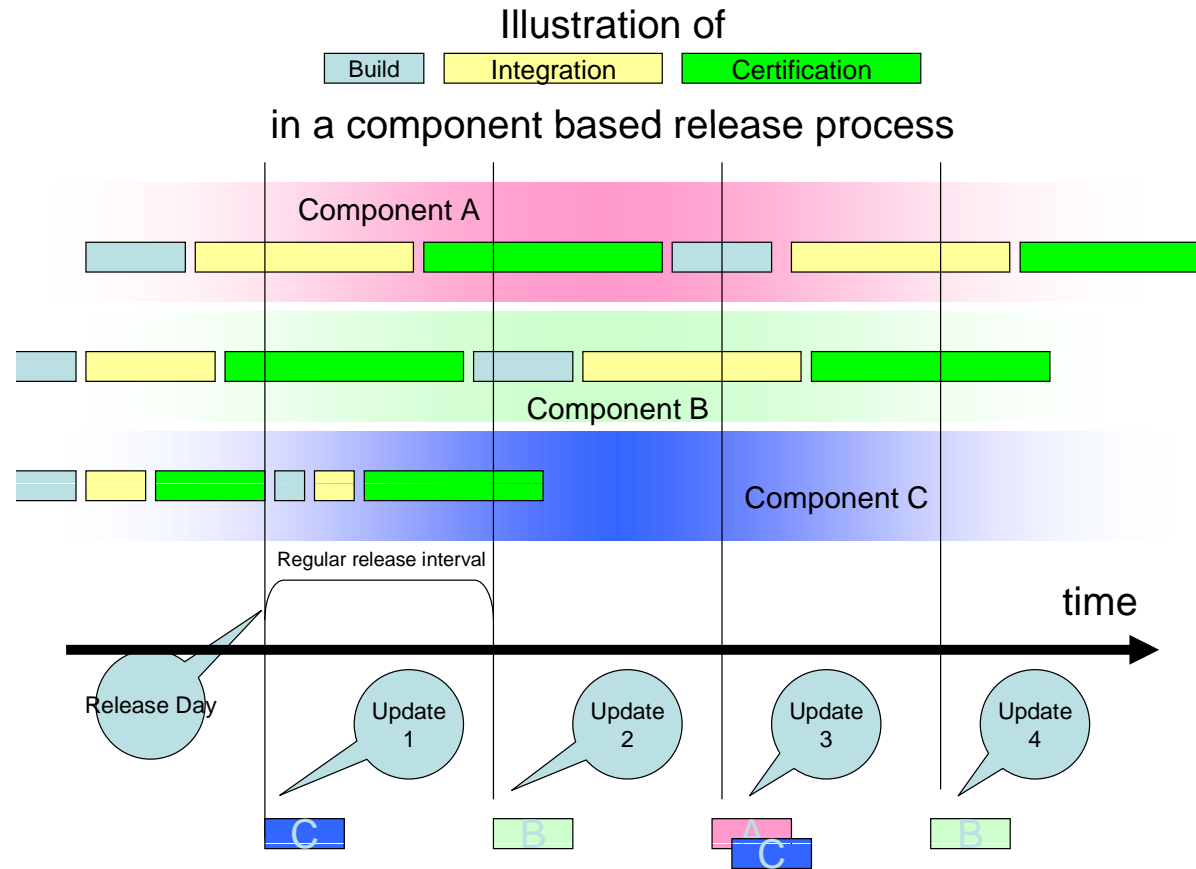
*Oliver Keeble*  
**SA3 CERN**

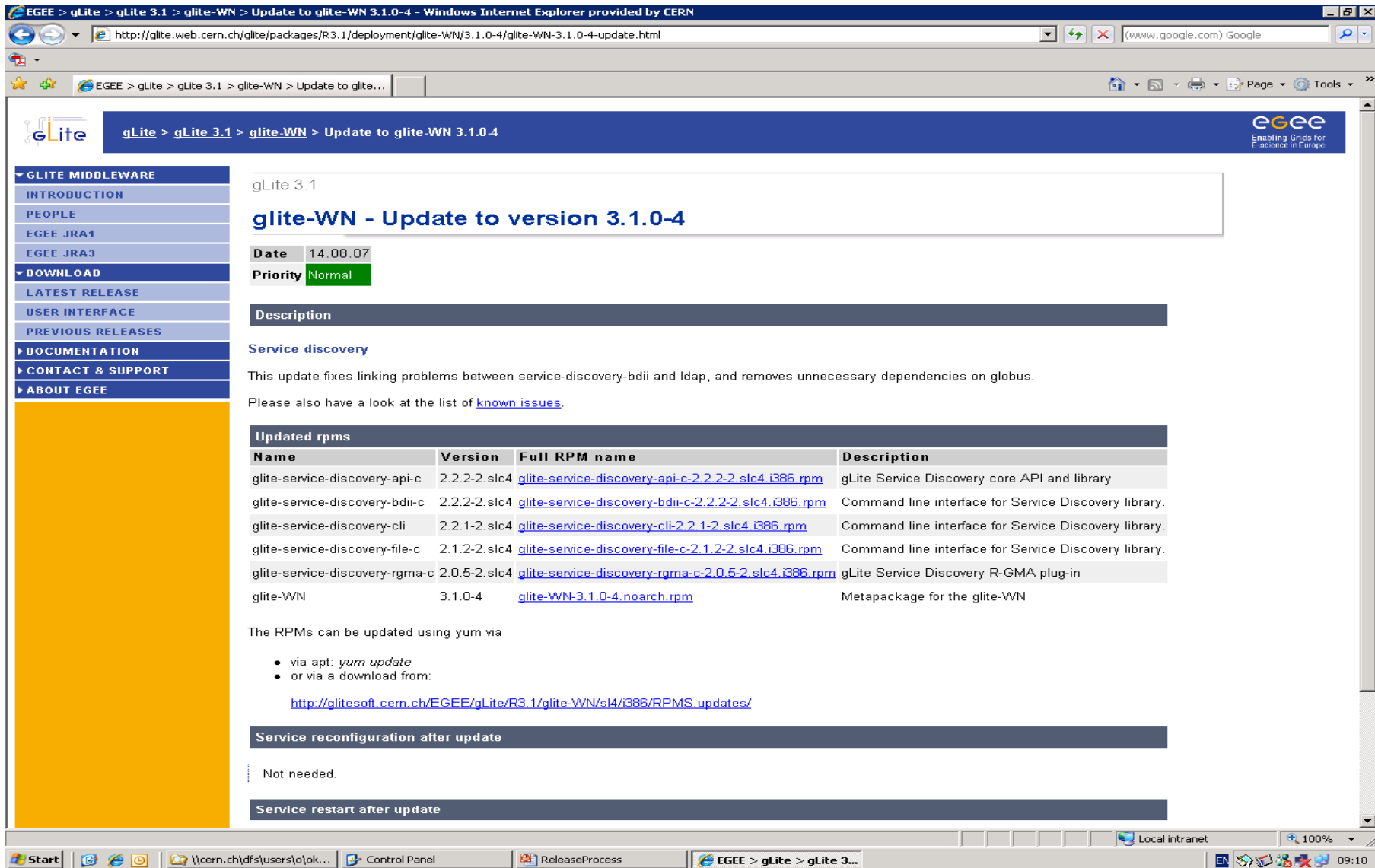
[www.eu-egee.org](http://www.eu-egee.org)



# What are we talking about?

- **A ‘gLite release’ is something we do every week.**
  - There are no more ‘big bangs’
  - Process operates on patches
    - Even gLite 3.1 services are being introduced gradually
  - Updates are released to PPS and production
    - Typically including up to 5 patches
  - Currently maintaining 2 releases
    - gLite 3.0 == SL3 == VDT 1.2
    - gLite 3.1 == SL4 == VDT 1.6 + ETICS build system
  - New gLite 3.1 services are being handled using as much of the existing process as possible
    - Addition of a ‘preparation’ phase before the formal process
    - Once this is over, the result will be plugged into the process like any patch





gLite > gLite 3.1 > glite-WN > Update to glite-WN 3.1.0-4

gLite 3.1

## glite-WN - Update to version 3.1.0-4

**Date** 14.08.07  
**Priority** Normal

**Description**

**Service discovery**

This update fixes linking problems between service-discovery-bdii and ldap, and removes unnecessary dependencies on globus.

Please also have a look at the list of [known issues](#).

**Updated rpms**

Name	Version	Full RPM name	Description
glite-service-discovery-api-c	2.2.2-2.sl4	<a href="#">glite-service-discovery-api-c-2.2.2-2.sl4.i386.rpm</a>	gLite Service Discovery core API and library
glite-service-discovery-bdii-c	2.2.2-2.sl4	<a href="#">glite-service-discovery-bdii-c-2.2.2-2.sl4.i386.rpm</a>	Command line interface for Service Discovery library.
glite-service-discovery-cli	2.2.1-2.sl4	<a href="#">glite-service-discovery-cli-2.2.1-2.sl4.i386.rpm</a>	Command line interface for Service Discovery library.
glite-service-discovery-file-c	2.1.2-2.sl4	<a href="#">glite-service-discovery-file-c-2.1.2-2.sl4.i386.rpm</a>	Command line interface for Service Discovery library.
glite-service-discovery-rgma-c	2.0.5-2.sl4	<a href="#">glite-service-discovery-rgma-c-2.0.5-2.sl4.i386.rpm</a>	gLite Service Discovery R-GMA plug-in
glite-WN	3.1.0-4	<a href="#">glite-WN-3.1.0-4.noarch.rpm</a>	Metapackage for the glite-WN

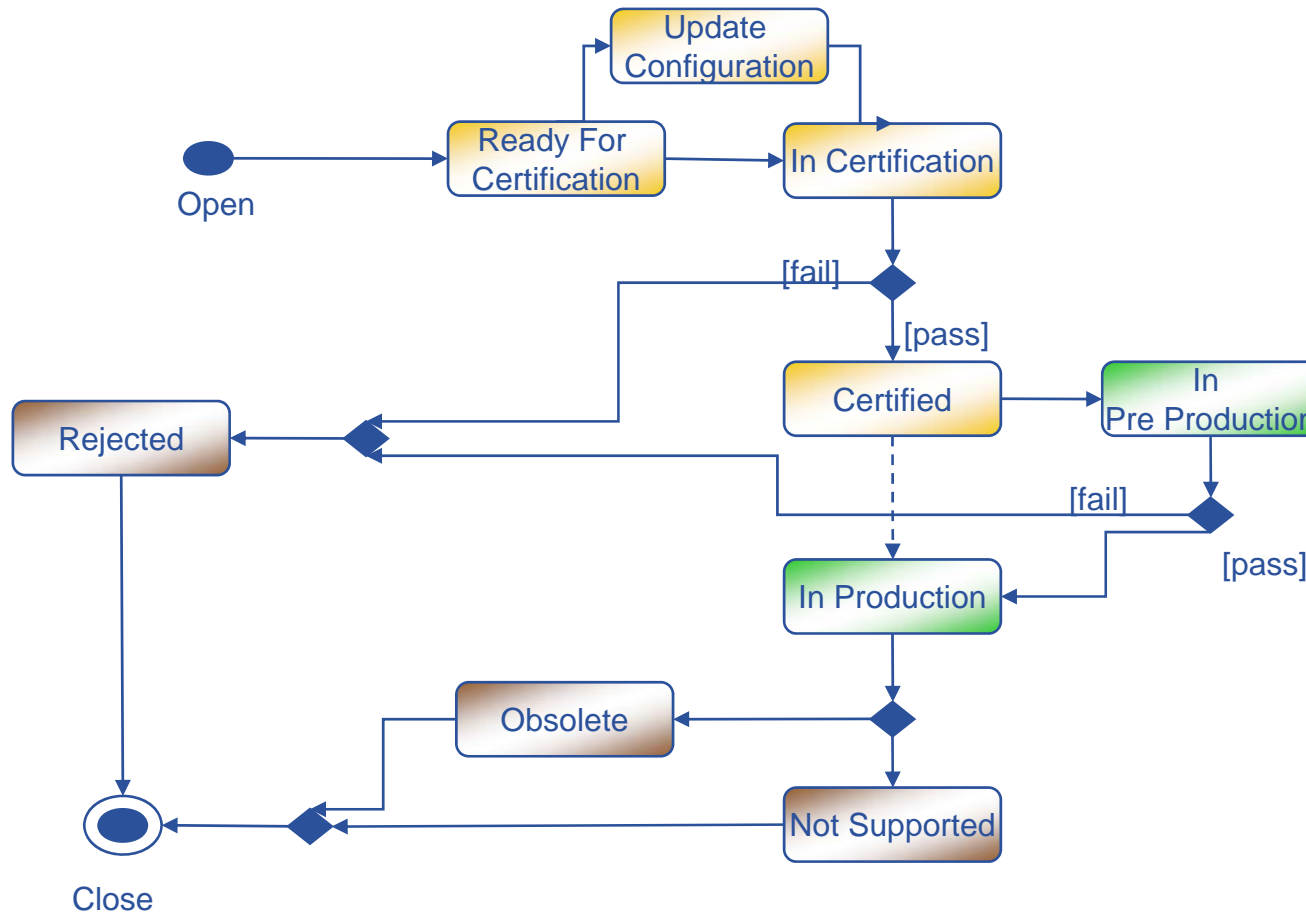
The RPMs can be updated using yum via

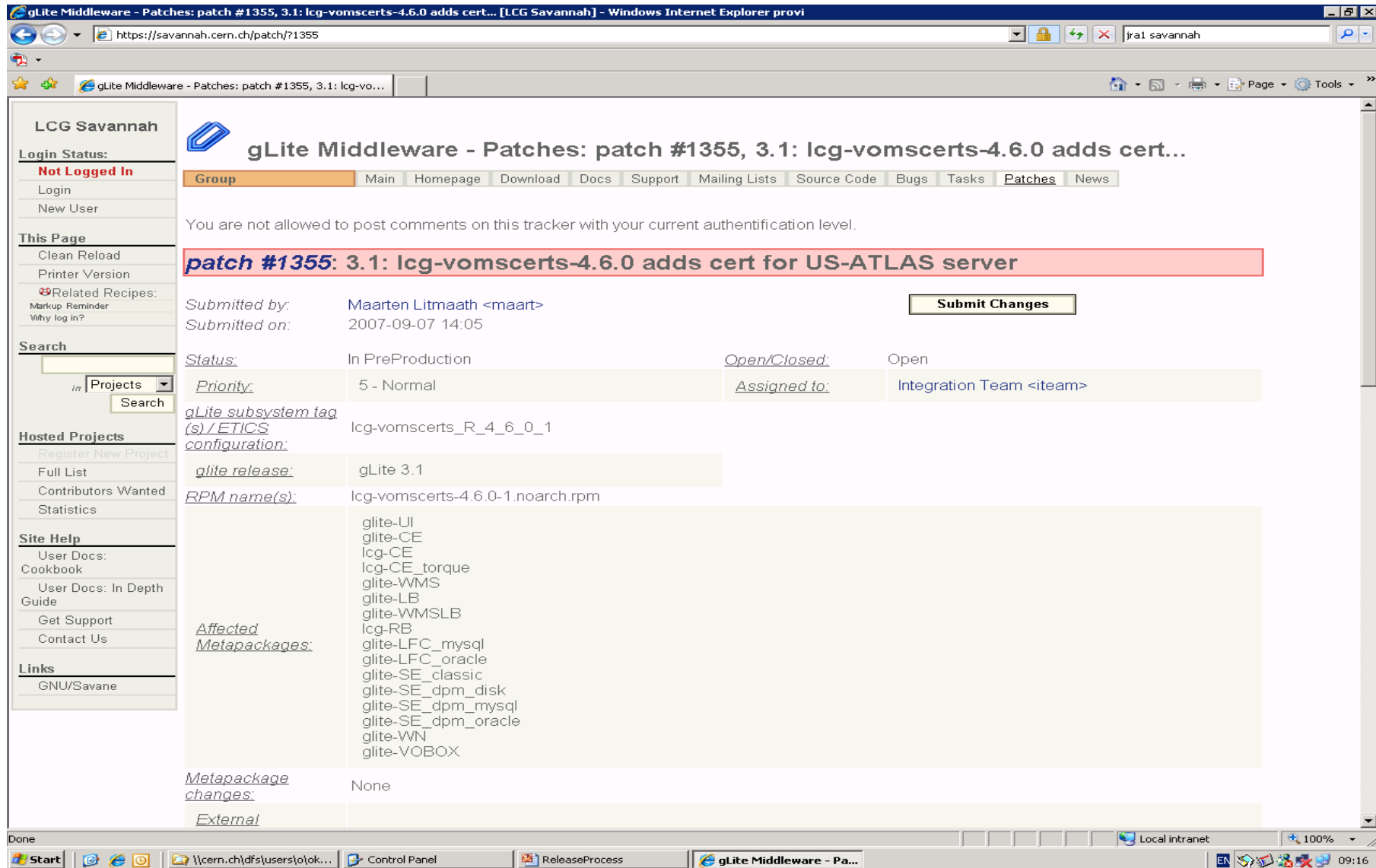
- via apt: `yum update`
- or via a download from:  
[http://glitesoft.cern.ch/EGEE/gLite/R3\\_1/glite-WN/sl4/i386/RPMS\\_updates/](http://glitesoft.cern.ch/EGEE/gLite/R3_1/glite-WN/sl4/i386/RPMS_updates/)

**Service reconfiguration after update**

Not needed.

**Service restart after update**





gLite Middleware - Patches: patch #1355, 3.1: lcg-vomscerts-4.6.0 adds cert... [LCG Savannah] - Windows Internet Explorer provi

https://savannah.cern.ch/patch/?1355

LCG Savannah

Login Status: **Not Logged In**

Login  
New User

This Page  
Clean Reload  
Printer Version  
Related Recipes:  
Markup Reminder  
Why log in?

Search

Hosted Projects  
Register New Project  
Full List  
Contributors Wanted  
Statistics

Site Help  
User Docs:  
Cookbook  
User Docs: In Depth Guide  
Get Support  
Contact Us

Links  
GNU/Savane

**gLite Middleware - Patches: patch #1355, 3.1: lcg-vomscerts-4.6.0 adds cert...**

Group Main Homepage Download Docs Support Mailing Lists Source Code Bugs Tasks Patches News

You are not allowed to post comments on this tracker with your current authentication level.

**patch #1355: 3.1: lcg-vomscerts-4.6.0 adds cert for US-ATLAS server**

Submitted by: Maarten Litmaath <maat> **Submit Changes**  
Submitted on: 2007-09-07 14:05

Status: In PreProduction Open/Closed: Open  
Priority: 5 - Normal Assigned to: Integration Team <iteam>

gLite subsystem tag(s) / ETICS configuration:  
lcg-vomscerts\_R\_4\_6\_0\_1

glite release:  
gLite 3.1

RPM name(s):  
lcg-vomscerts-4.6.0-1.noarch.rpm

Affected Metapackages:  
glite-UI  
glite-CE  
lcg-CE  
lcg-CE\_torque  
glite-WMS  
glite-LB  
glite-WMSLB  
lcg-RB  
glite-LFC\_mysql  
glite-LFC\_oracle  
glite-SE\_classic  
glite-SE\_dpm\_disk  
glite-SE\_dpm\_mysql  
glite-SE\_dpm\_oracle  
glite-WN  
glite-VOBOX

Metapackage changes:  
None

External

Done

Start | Control Panel | ReleaseProcess | gLite Middleware - Pa... | Local intranet | 100% | 09:16

- **The raw material**
  - Complex, interdependent, varying maturity
  - Certification and Testing are often conflated
  - We have a responsibility not a choice to release a component
    - Cannot choose components only on the basis of stability
  - But we represent the only route to deployment in many cases
    - FC6 and Firefox 1.5
- **Service introduction**
  - How to handle new services
  - Acceptance criteria
  - Incubation
  - Experimental services / PPS

- **Resources**

- ~30 FTEs
  - test writing, testbed management, information system, configuration, testing, certification, integration
- Assuming 60 Changers (JRA1 + LCG, VDT etc)
  - Changers/Testers ~ 5
  - Changers/Integrators ~ 10

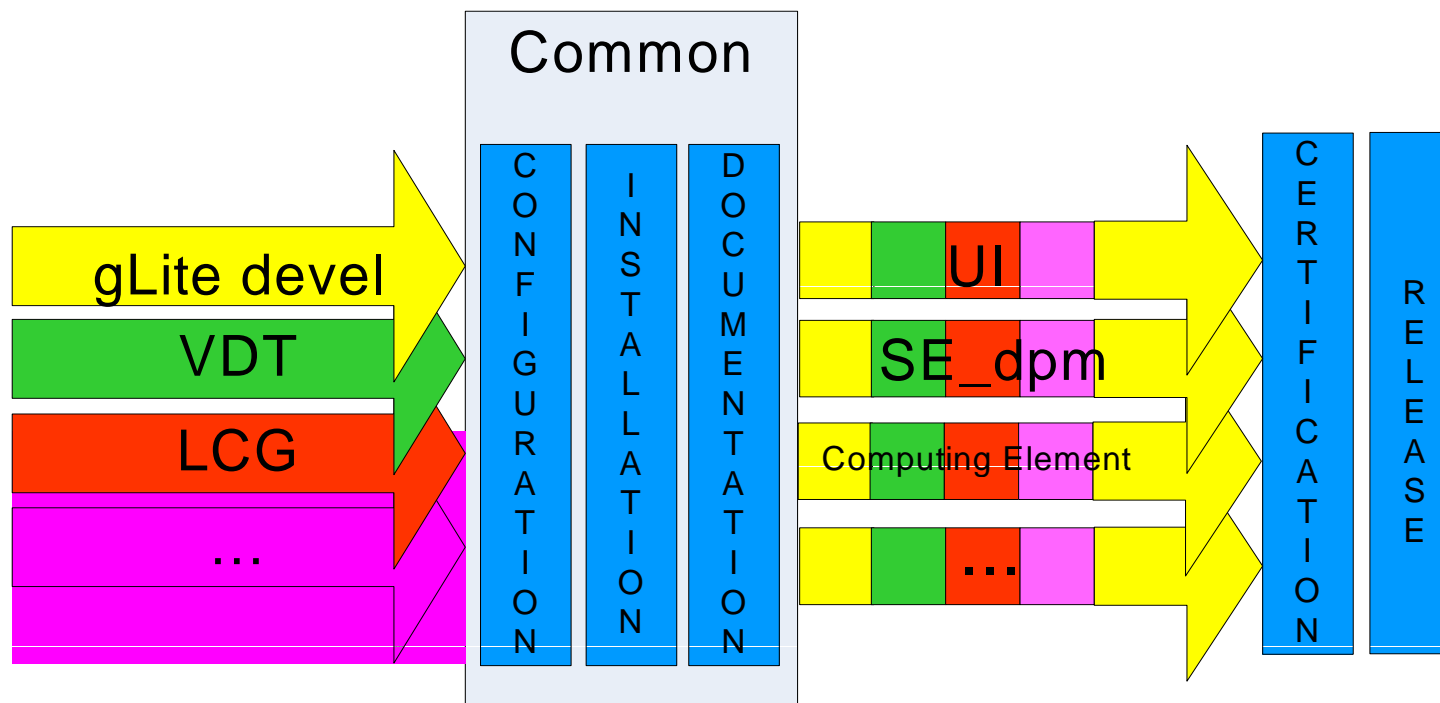
- **Scaling**

- Patches are very ‘parallelisable’
- Partners help to provide better coverage of deployment scenarios
- We have no spare capacity in order to be responsive – something else gets dropped
- Supporting 3.0 while creating 3.1 has been difficult
  - Some overlap in support is inevitable



• **Process**

- 'Integration points' introduce delays and extra dependencies
- Important changes can be delayed by trivial ones
- Doesn't change throughput, but affects latency
- Node types should not be infinitely recombinaable



- **Repositories**
  - Management scripts now working well
    - Treat ETICS as a ‘build factory’
    - An ETICS project definition has no deterministic relationship to a release definition
  - AA repo
- **Testing**
  - Test coverage
  - Historical records
- **Documentation**
  - We’ve come a long way, but maybe info is not presented most effectively
    - Particularly deployment/rollout advice
- **Configuration**
  - Some ‘split’ yaim 4 modules have already been released
  - Hope this will improve responsiveness
- **We will soon have to deal with 64bit issues**
  - This will mean 3 platforms simultaneously
  - 64 bit nodes will need 32 bit libraries installed simultaneously
  - Once a service is released for 3.1, the 3.0 equivalent will not attract all updates and will ultimately be phased out.