

EUG

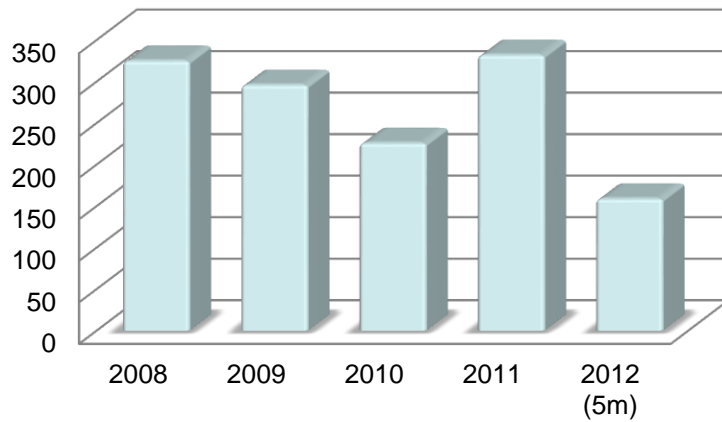
20/06/2012

News from Electronic Modules design, manufacturing
and assembly

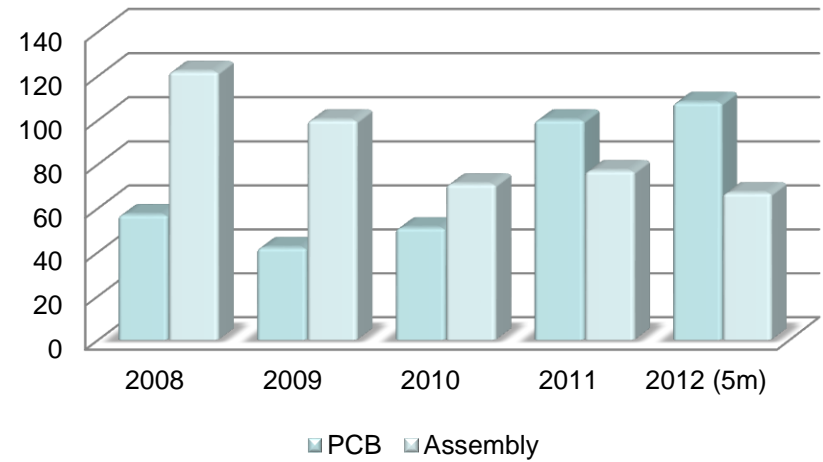
Betty Magnin TE-MPE-EM

TE-MPE-EM some figures

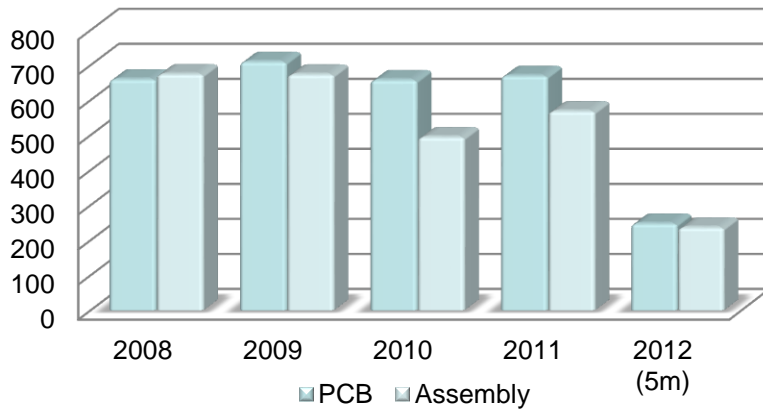
Design



Outsourcing



Internal facilities



TE-MPE-EM News Design and planning office

Design office: Since Michel Couturier retired in June 2011, the Cadence librairie is managed by the FSU team (1 new resource hired in April 2012).

Planning and procurement : 2 FSU resources since February with a technical profile and able to purchase components.

Subcontracting: 2 contracts for PCB manufacturing (IT and UK)

Building 107: Construction design completed, building 174 demolished, adjudication for construction contract by June finance committee. Finished building before the end of 2013.

Building 107- project





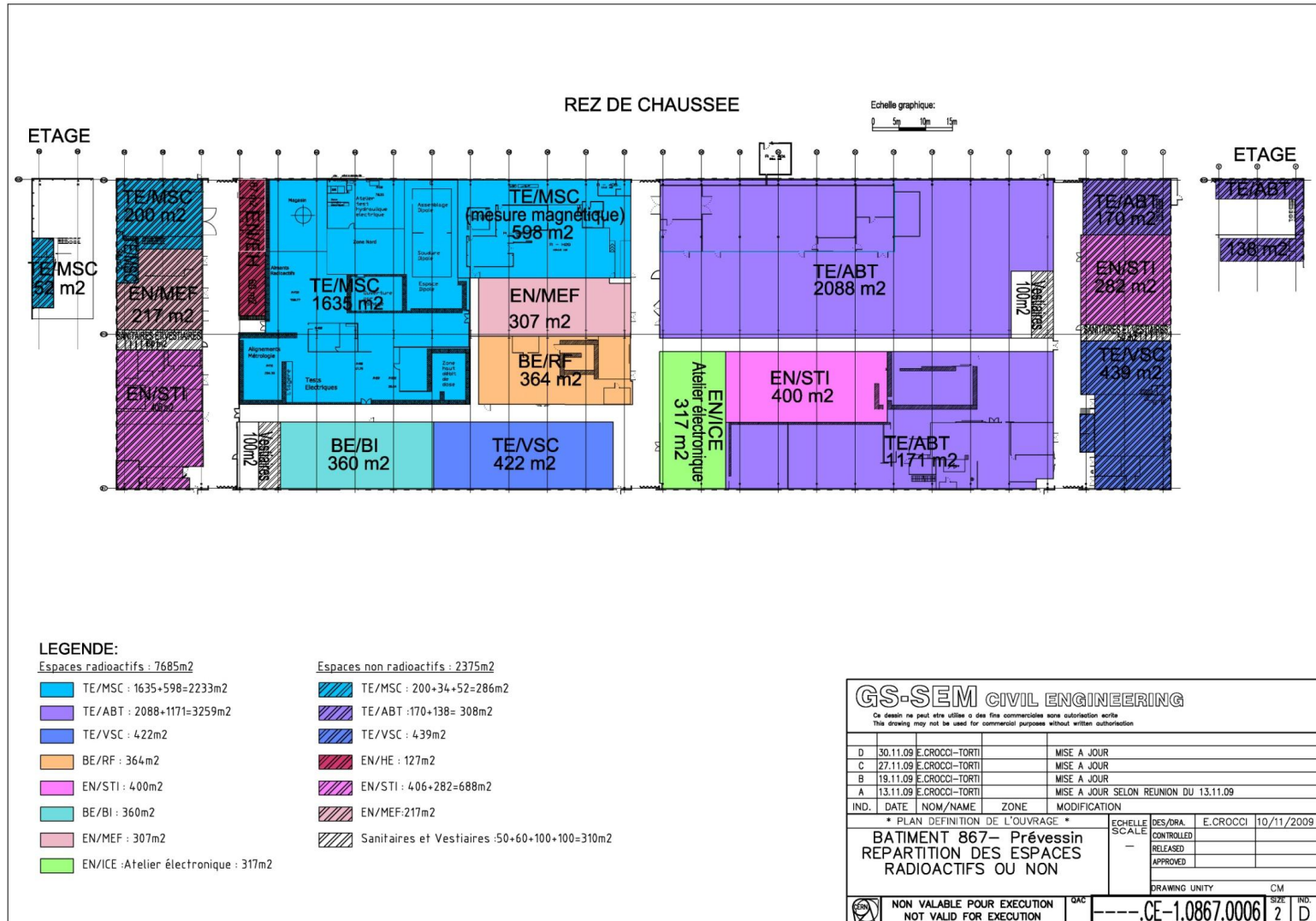
TE-MPE-EM News PCB manufacturing workshop

- Laser Direct Imaging for image transfer (replaces photoresist process with an increased resolution) installed in March 2011.
- New flying probe for electrical test installed in May 2012
- All investment to manufacture large MPGD components (RD51) purchased, and for most of them (4 out of 9), installed and in service.

TE-MPE-EM News PCB assembly workshop

- Strong involvement in the ATLAS nSQP project : set up and documentation of the assembly process, the tooling and the infrastructure for PCB and wiring; hiring and training of 6 temporary people for a 1-year period.
- Replacement of the soldering oven in progress
- Acquisition of a Mydata Jetprinter to replace stencil screen printing of solder paste. Installation and setup forecast for Q4 2012.

TE-MPE-EM in Building 867



The electronic repair workshop in B867

- Equipments for the general purpose repair area installed.
- 8 diagnostic cells installed with benches, shelves, and generic set of repair equipment (soldering iron, ESD tweezers, screw-drivers,...)
- The workshop is presently available to store « normal », not radiated, material and for non-destructive work.
- The workshop will be classified when RP equipment (common to the whole building) is installed. An intermediate solution could be found if urgently required.
- Sylvain Kaufmann will be RPE for this area.

The workshop should be fully in operation by 2012/Q3

Questions ?