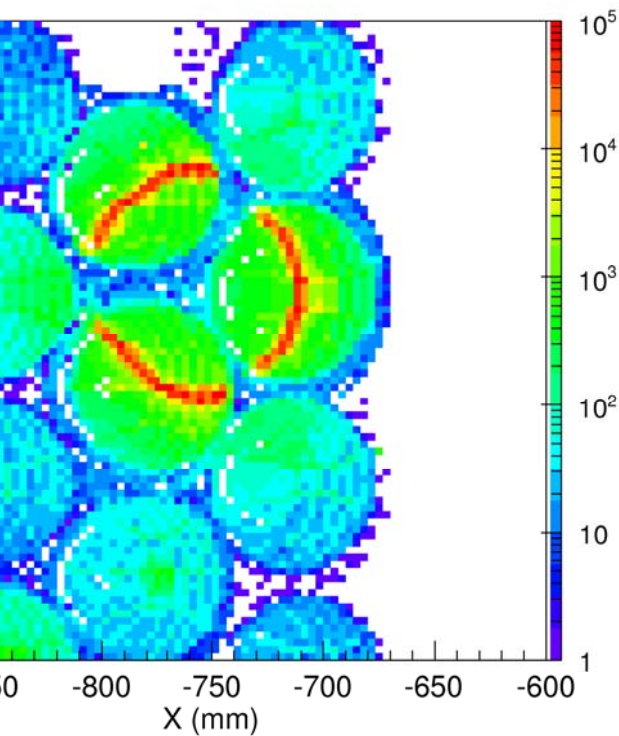




the VELO.

Figure 2: LEFT: *side view schematic of RICH pit.*

ponents (production
ons, kaons, protons
us beam tests have
e the complete data



bottom right and Cherenkov
MIDDLE & RIGHT: *Multiple*

Particle Identification

Particle identification
the LHCb physics pro
from decay processes

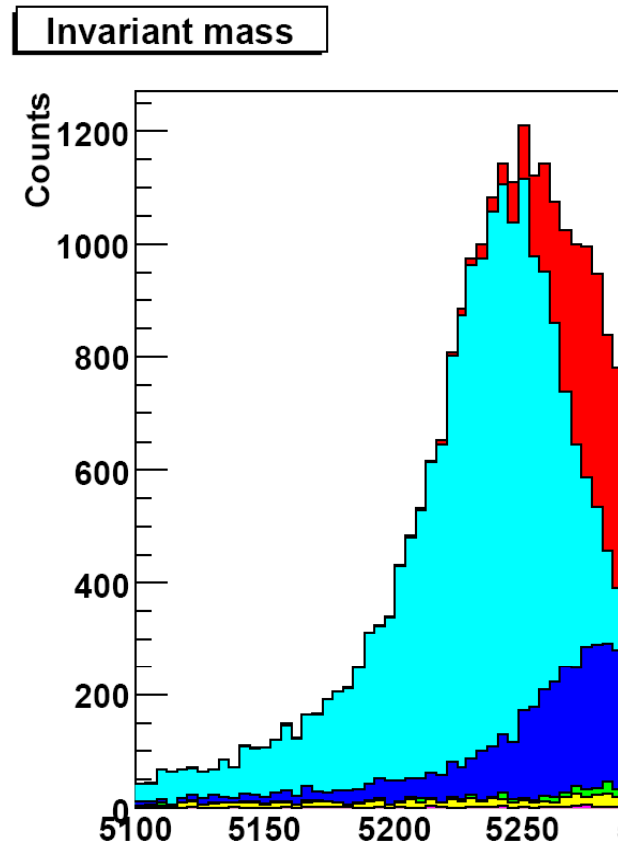


Figure 6: *Simulation of recon
particle identification.*

Slide 1

- p1** from JINST 2008 LHCb at LHC paper
pickford, 8/22/2008
- p2** first two figures from JINST 2008 LHCb at LHC paper
end photo from my ieeee2006 talk, orginally from where?
pickford, 8/22/2008
- p3** from Nick Styles NDIP practice talk
pickford, 8/22/2008
- p4** from Ulrich Kurzels draft testbeam paper, ref3
pickford, 8/26/2008
- p5** from Jun 08 RICH meeting testbeam talk - are details correct?
pickford, 8/22/2008
- p6** plot from Ulrich Kerzels Jun 08 rich group meeting talk

table is for HPD 265 from draft testbeam paper
pickford, 8/26/2008
- p7** RICH photo from Nick Styles talk at Photodetection 2008

RICH1 plot from Aug 20th commissioning meeting

RICH2 plot from Young Min Kims HPD status talk at Jun 08 RICH meeting
pickford, 8/27/2008
- p8** from Chris Jones talk Rich Data Quality: PID Performance (DAQ meeting 17/6/2008)
but see ref Raluca Muresan Charm Physics at LHCb
pickford, 8/26/2008
- p9** from
A. Carbone et al, Charmless charged two body B decays at LHCb
LHCb Note 2007-059
pickford, 8/26/2008
- p10** from Ulrich Kerzels 2008 europhysics conf paper
pickford, 8/26/2008