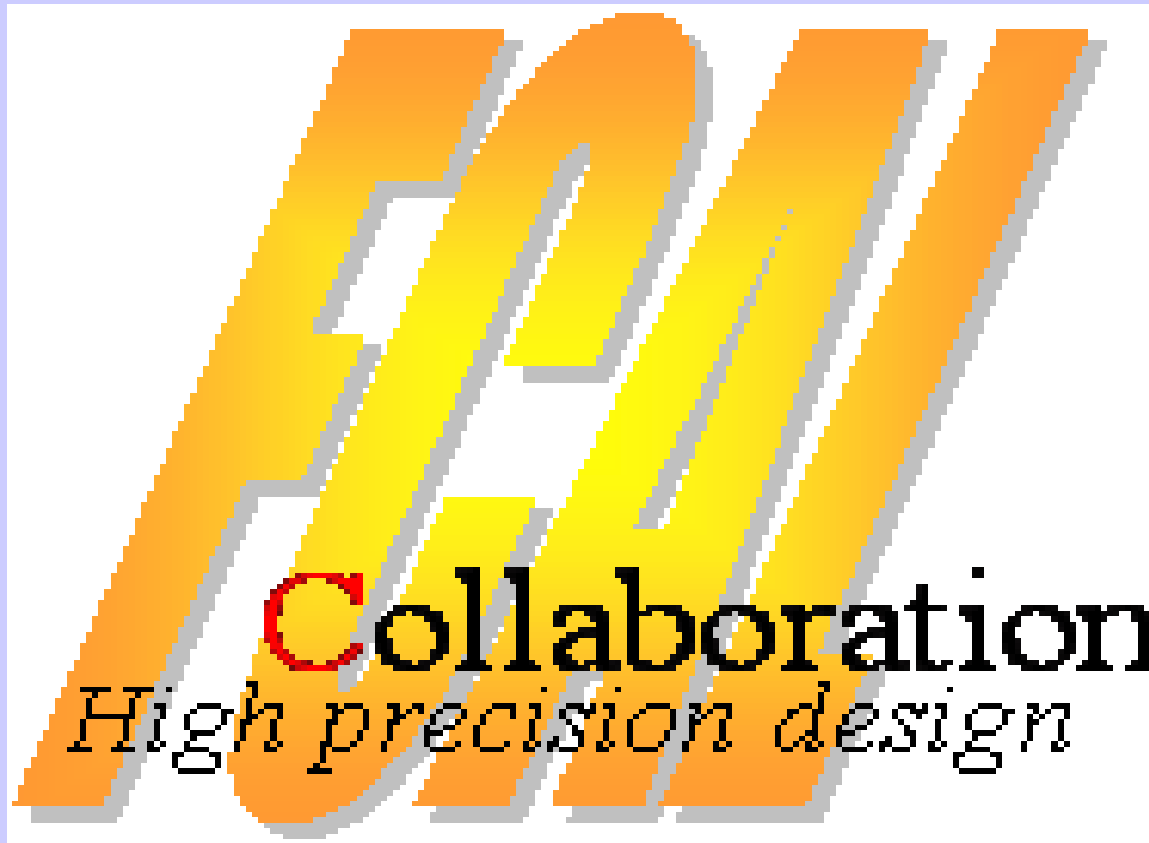


Introduction to the Workshop

Wolfgang Lohmann, BTU and DESY





Institutes involved: AGH-UST, Cracow, Poland, ANL, Argonne, USA, CERN, Geneva, Switzerland, DESY, Zeuthen, Germany, IFIN-HH, and ISS Bucharest, Romania, INP PAN, Cracow, Poland, JINR, Dubna, Russia, LAL, Orsay, France, NCPHEP, Minsk, Belarus, SLAC, Menlo Park, USA, Stanford University, Stanford, USA, Tel Aviv University, Tel Aviv, Israel, Tohoku University, Sendai, Japan, UC California, Santa Cruz, USA, University of Colorado, Boulder, USA, Vinca, Belgrade, Serbia, Pontificia Universidad Catolica de Chile

Publications

Angel Abusleme et al.:

IEEE TRANSACTIONS ON NUCLEAR SCIENCE, VOL. 59, NO. 3, JUNE 2012

BeamCal Instrumentation IC: Design, Implementation, and Test Results

Angel Abusleme, *Member, IEEE*, Angelo Dragone, Gunther Haller, and Bruce A. Wooley, *Fellow, IEEE*

Konstantin Afanaciev et al.

Investigation of the Radiation Hardness of GaAs Sensors in an Electron Beam

K. Afanaciev^{a*}, M. Bergholz^b, P. Bernitt^{b1}, G. Chelkov^c, J. Gajewski^d, M. Gostkin^c,
Ch. Grah^{e2}, R. Heller^e, H. Henschel^e, A. Ignatenko^{abe}, Z. Krumshteyn^c, S. Kulis^d,
W. Lange^e, W. Lohmann^{b e}, D. Mokeev^f, V. Novikov^f, M. Ohlerich^{be 3}, A. Rosca^{ge},
A. Saprnov^c, R.S. Schmidt^{be}, S. Schuwalow^{e4}, O. Tolbanov^f and A. Tyazhev^f

More will come (e.g. Diamond studies, Testbeam Analysis)

Forward Calorimeters Test Beam Results for Future Linear Colliders

Posters:

Olga → ICHEP
Ivanka → ICHEP

Olga Novgorodova
DESY, Germany
[on behalf of the FCAL Collaboration]
ICHEP2012, 4 –11 July, Melbourne, Australia

Talks:

Szymon → IEEE (Linear Collider Event)
Ivan → LCWS UTA Arlington
Andre → LCWS UTA Arlington
Wolfgang → LCWS UTA Arlington
Eliza → Romanian Phys. Society

Drafts Done!

INTERNATIONAL LARGE DETECTOR

DBD

ILD Concept Group

2012



SiD

DETAILED BASELINE REPORT

Both drafts contain chapters describing the very forward calorimeters

The physics volume

This volume describes the physics possibility of ILC in the light of new LHC results and referring to the simulations based on the detailed detector design.

- The volume was written by the author group convened by M. Peskin, and its first draft was made open already in July and is kept improving.

You are welcome to read and comment.

<http://lcsim.org/papers/DBDphysics.pdf/>

It is ~3 times thicker than the original plan.

Detector chapters, ILD and SiD

- **Talks by the groups are planned in this session.**

- There are some numbers still missing in these drafts (1 TeV simulation).

We hope these can be filled soon.

- **Both groups exceeded the expected limit of 150 pages.**

We will reconsider the limit while trying to remain within 10-20 % increase.

(These are the final report of our work during the LOI era. To convince experienced readers, detailed information will be useful.)

Almost final version of the DBD: End of Novembre

Presentation to PAC in mid December (Tokyo event)

Review by an extended PAC

What is left:

- Shorten the FCAL part in the ILD DBD
- The SiD part should have a few more informations
- A statement about 1 TeV
- Critical and Future R&D

Tungsten structure – well in time (CERN)

- Tungsten plates – ongoing

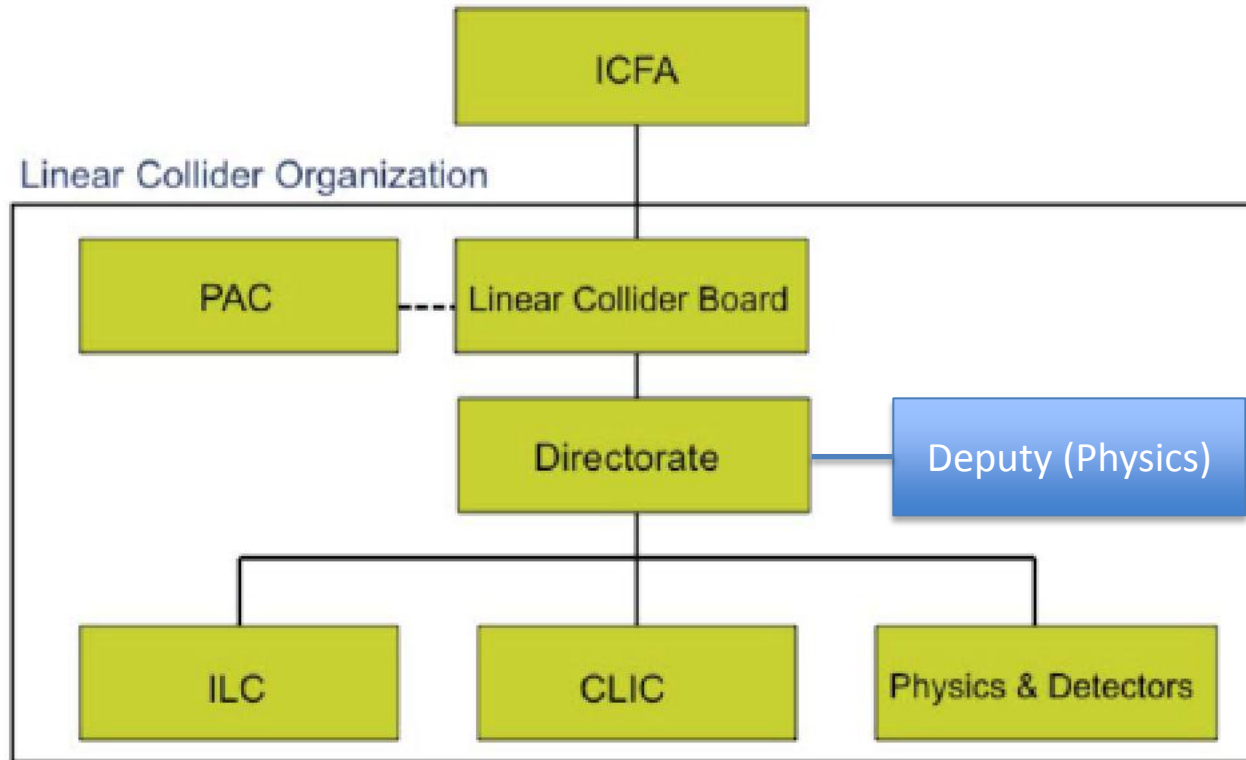
Design of sensor planes – needs conclusions soon

- Module construction and test devices (jigs, mechanics and electronics test facilities)
- Position control devices
- ASICs
- Power pulsing
- Data acquisition
- Tracking in front of the calorimeter

Marek agreed to present a detailed working plan –

Needs attention on this workshop

LC organisation



- Recent discussions of the European Members of the LCB (5+5+5+1) and soon also advisory group – discussions lead by ECFA chair Manfred Krammer
- Lyn Evans appointed director for the LC efforts (starting in 2013) – ICFA announced in June

Linear Collider Board

- LCB will have 16 members and will include the Directors of the world's HEP labs and 2 members from each region.
- European members will include CERN DG, head of PP at DESY, Dubna DG and 2 representatives nominated by ICFA.
- Probably will set up a European Advisory Board
- Joint meeting of LCB and ILCSC in Vancouver in February.

