

# NA62 / K12 Status

Francois and Lau

EATM 17 July 2012

## BEAM LINE:

- Installation of last magnets under way, now installation of plug-in bases
- Hope to complete collimator preparations before end of July, including controls by EN-STI and new inserts by MEF.
- TAX block delivery still expected in October. Plan B exists in case of late delivery.
- Big Fisc is on critical path, vital for beam diagnostics.  
A new tank must be constructed – meeting on 18<sup>th</sup> of July with BI team.
- Cedar feet remain to be installed and aligned.
- Final alignment of all beam line elements, once installation is complete.



# VACUUM BEAM

- Layout is defined in detail and agreed.
- Fabrication of all connections upstream of blue tank is on-going.  
Installation and leak tests after holidays.
- Downstream of LKR some transition pieces are not yet made.  
Follow the installation of detectors vacuum wise.
- Control cables (for technical run) are being pulled.
- Compressed air distribution (local connections) must be clarified soon.
- The Cedar prototype windows are in the final phases of evaluation.  
If successful – ready to produce final windows soon.  
Baseline for the Technical Run: 150 and 200 micron thickness.
- Turbo-pumps are still operational, but obsolete.  
Recommend to foresee some spare pumps from operations budget.

## BLUE TUBE VACUUM

- The cryo-pump order has gone out.  
Still some discussions on-going with manufacturer concerning routing of primary pump system. The firm will visit the site on July 25<sup>th</sup>.
- The ongoing tests with the full blue tube section for the Technical run are now stalled due to non-availability of compressor cooling (planned).  
Also suddenly the pumps started to saturate far too quickly. Some damage was found at the level of the pump. Discussions under way with the company.
- A new link person has been nominated in TE-VSC: Berthold Jenninger.



DET  
10/10/10

BA82

BA81

## DETECTORS

- MUV installation is under way.
- MUV3 will be installed this week. MUV2 is foreseen next week. MUV1 will be much later.
- The CHOD has been tested successfully and is ready for the Dry Run.
- The Straw detector is scheduled to arrive in September.



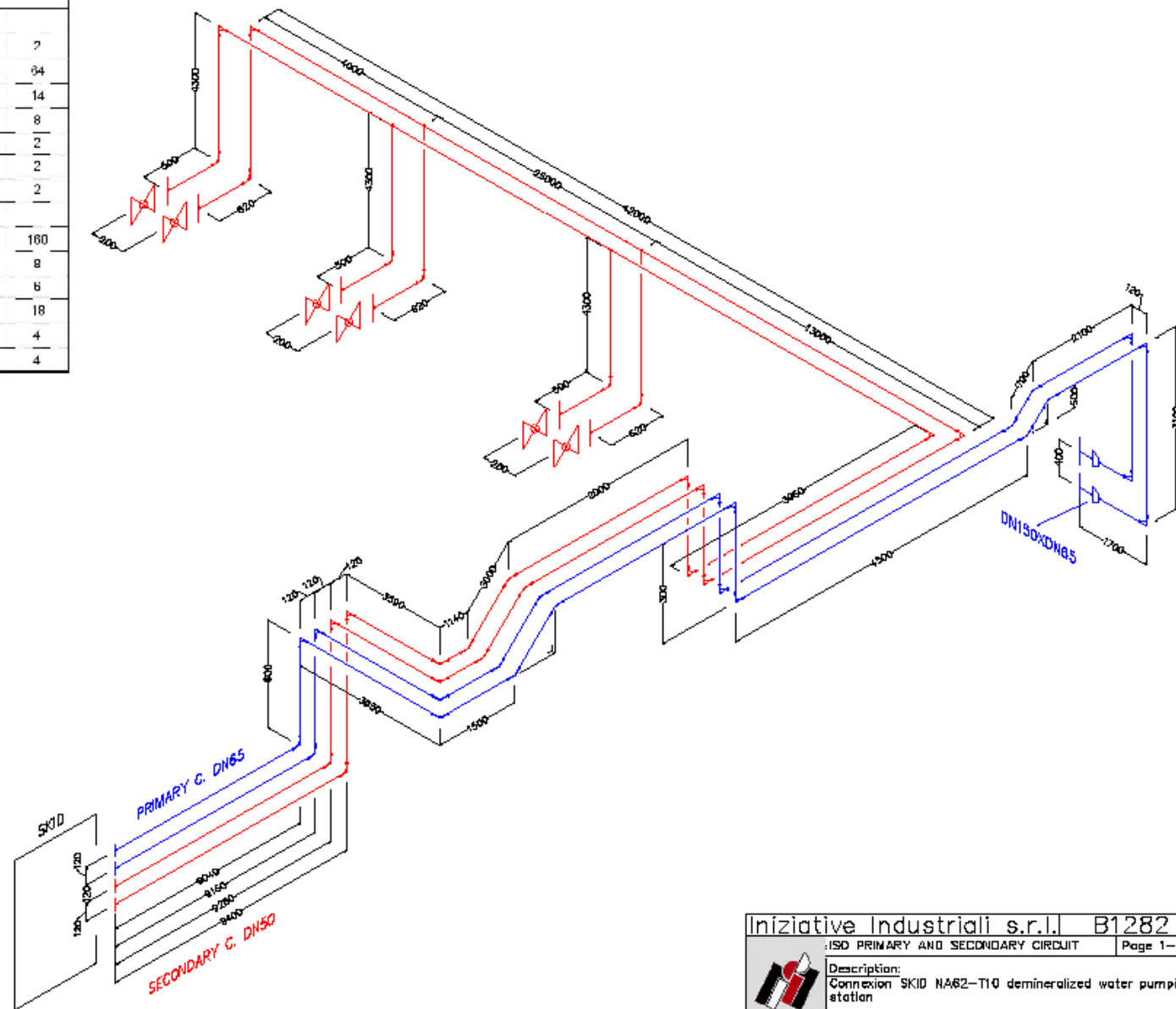
MUV3



# UNDERGROUND INFRASTRUCTURE

- The T10 cooling system seems on track for the Technical Run. The “skid” is ready at the Iniziative Industriale premises. The tube layout is ready for approval soon and must be integrated in Catia.
- The cooling for the cryo-pumps will be delayed by two weeks, but this is not on the critical path.
- The PPG air lock tightness will be made in the next week and the degree of tightness evaluated by CV. This system is still on track for commissioning in September.
- The design of the TCC8/ECN3 separation wall must be endorsed by CV, as well as minor modifications to the present system and operational procedures for the 2014 run.
- The electrical infrastructure is essentially completed.
- The contract for the ECN3 crane renovation has been granted. For TCC8 the renovation will be done later.
- The RP upgrade (to RAMSES) will be done after the technical run. A workaround has been prepared by RP.

Designation of items	Size	Units	Qt
<b>CIRCUITO PRIMARIO DN65</b>			
SET OF ONE FLANGE FOR APPLIANCE	DN65	set	2
STEEL PIPE	DN65	m	94
STEEL BEND 3D 90 DEGREES	DN65	P/U	14
STEEL BEND 3D 45 DEGREES	DN65	P/U	8
CONCENTRIC REDUCER DN150/80	DN150/80	P/U	2
CONCENTRIC REDUCER DN80/65	DN80/65	P/U	2
SET OF ONE FLANGE FOR APPLIANCE	DN150	set	2
<b>CIRCUITO SECONDARIO DN50</b>			
STEEL PIPE	DN50	m	180
SET OF ONE FLANGE FOR APPLIANCE	DN60	set	8
GALL VALVE (threaded) Siega Polyethylene	DN50	P/U	6
STEEL BEND 3D 90 DEGREES	DN50	P/U	18
STEEL BEND 3D 45 DEGREES	DN50	P/U	4
STRAIGHT OR OBLIQUE BRANCH	DN50	P/U	4



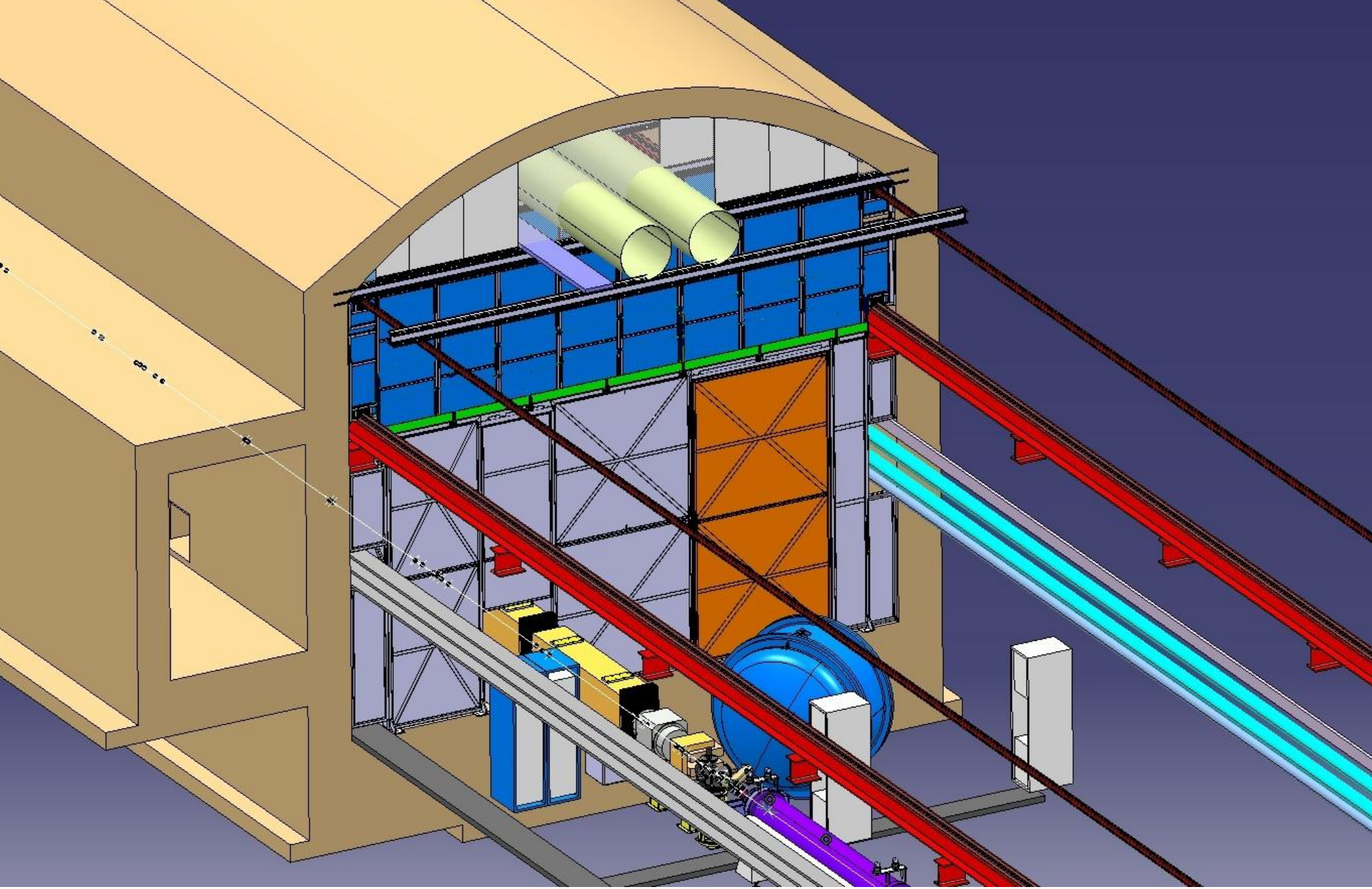
Iniziativa Industriali s.r.l. B1282

ISO PRIMARY AND SECONDARY CIRCUIT

Page 1-1



Description:  
Connexion SKID NA62-T10 demineralized water pumping station





## SURFACE BUILDING

- The surface building is ready for the Dry Run, apart from the air conditioning. Two temporary coolers have been installed in the control room and PC farm room. These remain available until July 27<sup>th</sup>. X-ray and pressure tests are on-going this week.
- The pipe insulation work starts on Wednesday and will last 2 weeks. The corridor floor will thus be open in a number of places.
- The access control to the different rooms is almost completed. The EDH authorisation system is being prepared. It is not clear how long the commissioning will take.
- Painting will be done between the Dry Run and Technical Run.