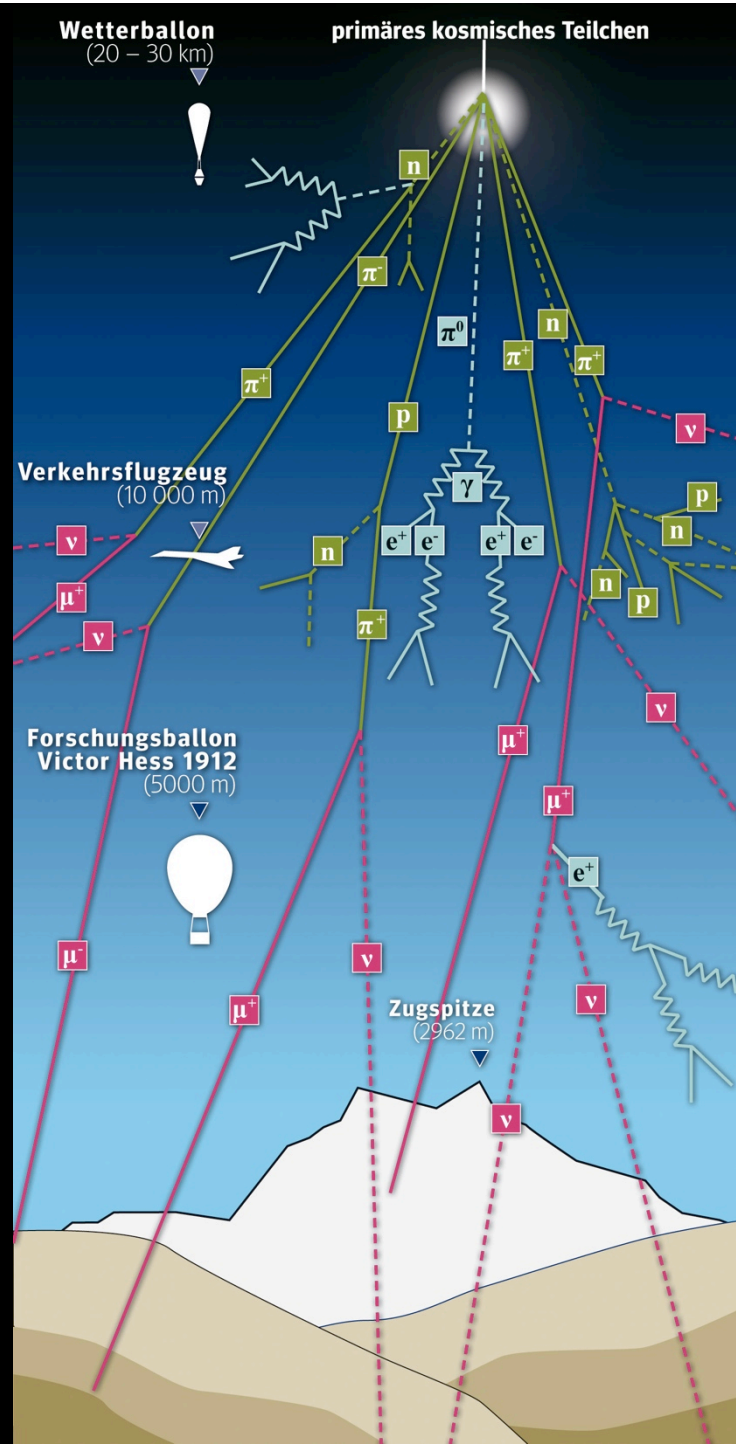


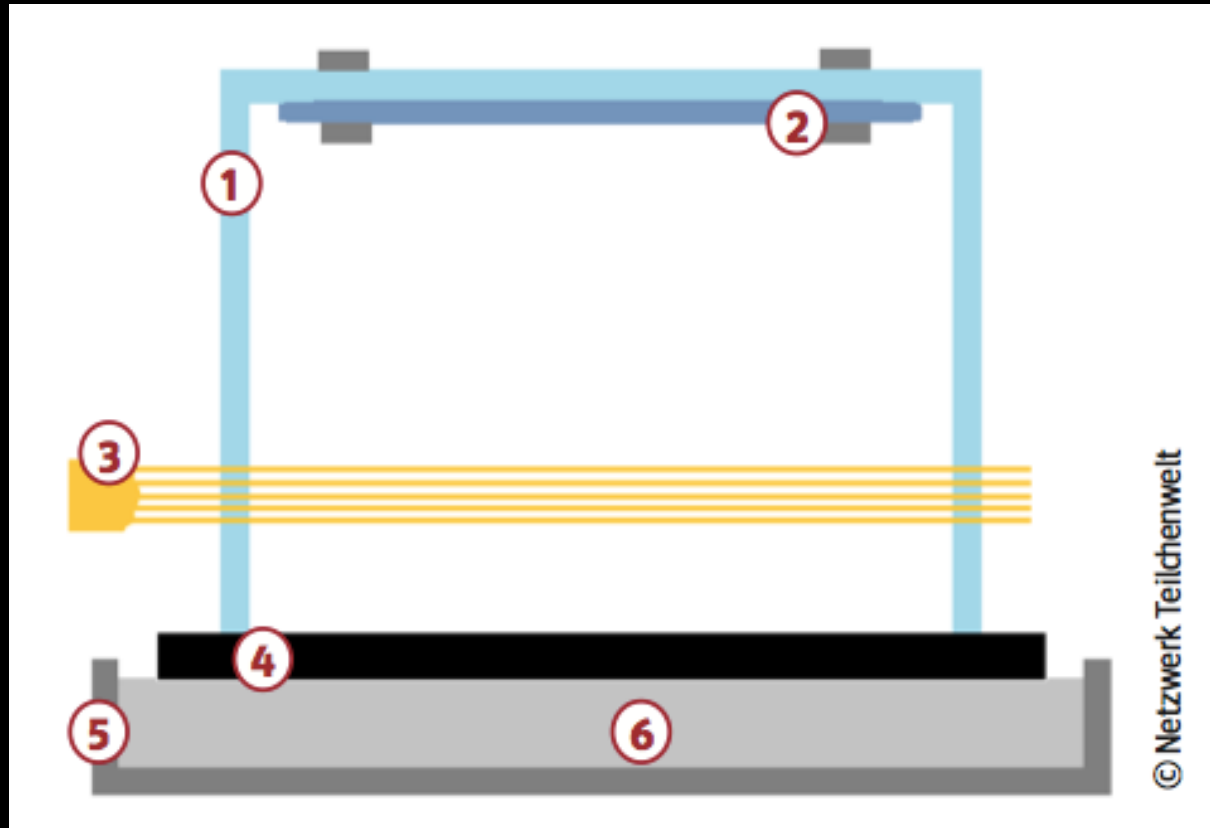
Selbstbau einer Nebelkammer



(1) Durchsichtige Kunststoff oder Glasbox

(2) Filz

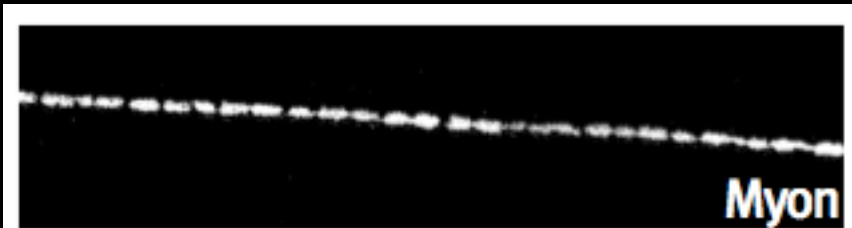
(3) Taschenlampe



(4) Schwarze Metallplatte

(6) Trockeneis

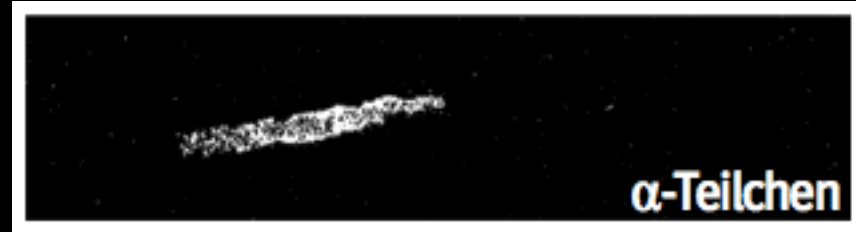
(5) Styroporkiste



Myon



Elektron



α -Teilchen



Elektron (z.B. aus Beta-Strahler)



Photoelektronen



e^-
Myon-Zerfall