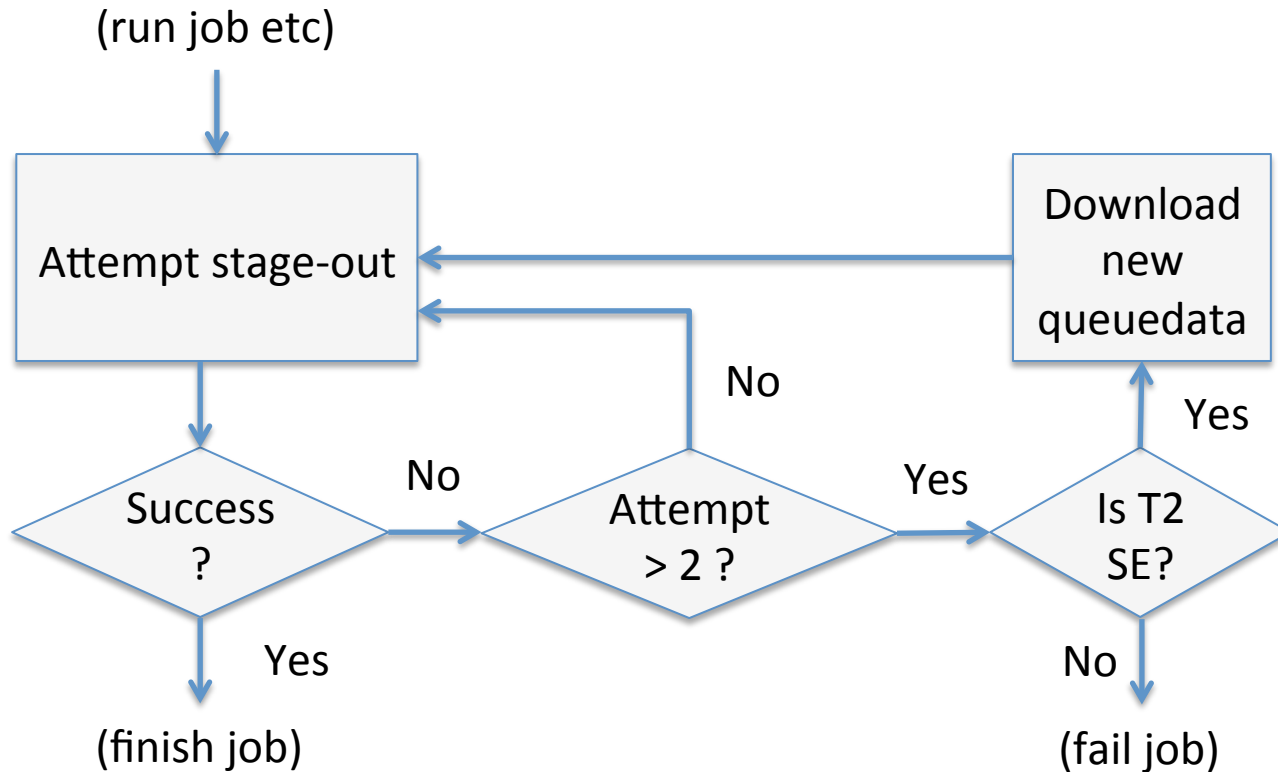


Model: Stage-out to Alternative SE



In case pilot fails to stage-out at primary SE (T2), download new queuedata from schedconfig and re-attempt stage-out to secondary SE (T1 in the destination cloud).

Requirements

- Mechanism to be used on T2:s
- Pilot must know where to do the alternative stage-out
 - Download new queuedata (for relevant T1) in case of local SE problem
 - Pilot is using PanDA queuename to get queuedata (e.g. CERN-PROD-ce206-grid_atlas-lsf)
 - Jarka S has already provided a dictionary that the pilot can do the cloud and queue lookup in, no need for a new schedconfig field (unless we need a switch to allow alternative SE stage-out)
 - Note: CERN-PROD has several queues. Currently, dictionary has one queue (the first in the queue list)
- Pilot must use a supported copy tool
 - lcg-cp should always be supported
- Transfer files to T1 in job.cloud rather than schedconfig.cloud
- Complications with subscriptions unless lfcregister=server for both T1 and T2 (at least T1 and T2 should use the same LFC, but simplest if PanDA server does the registrations)