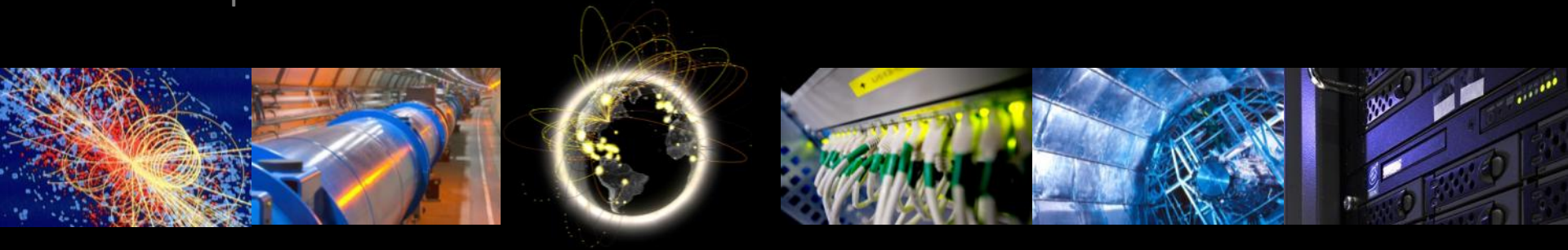


# WLCG Status

Ian Bird; WLCG Project Leader

## LHCC Referees Meeting

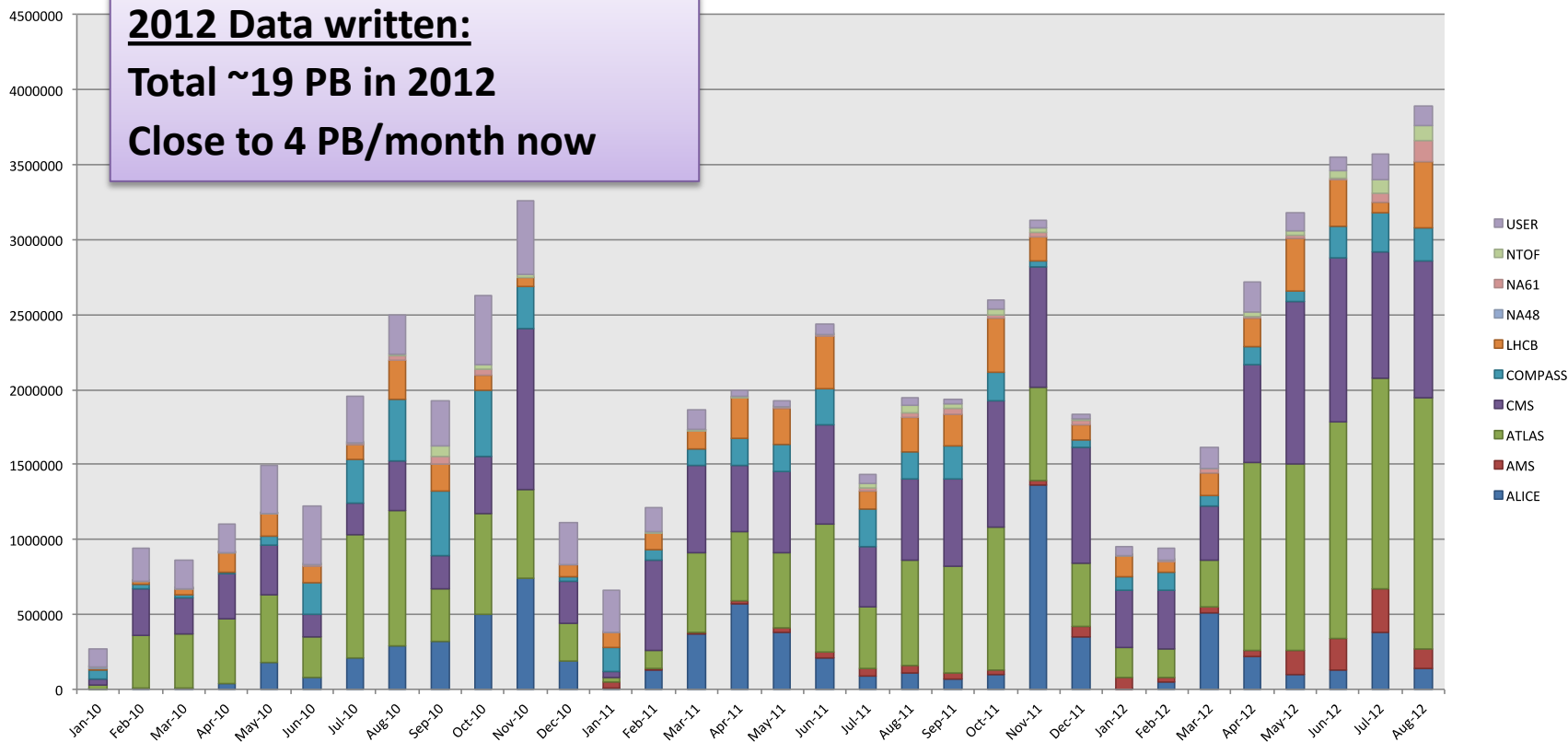
25<sup>th</sup> September 2012



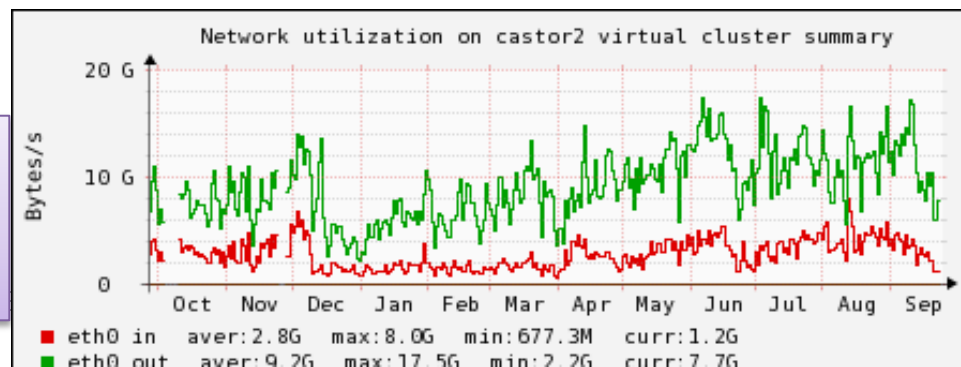
# Castor data written 2010-12

CASTOR data written, 01/01/2010 to 31/8/2012 (in GB)

**2012 Data written:**  
**Total ~19 PB in 2012**  
**Close to 4 PB/month now**

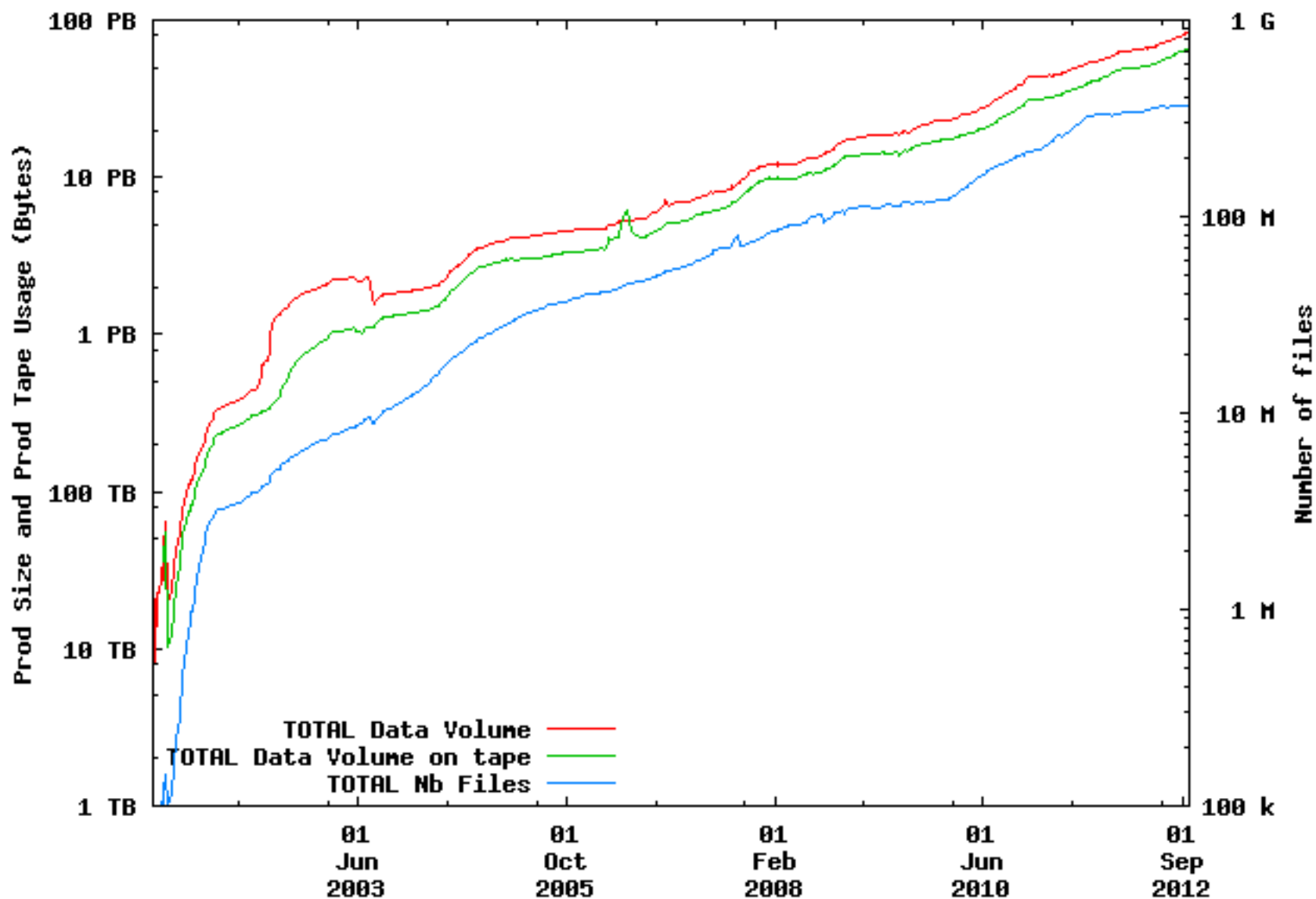


Data rates in Castor increased  
 3-4 GB/s input  
 ~15 GB/s output





### Experiments Production Data in CASTOR

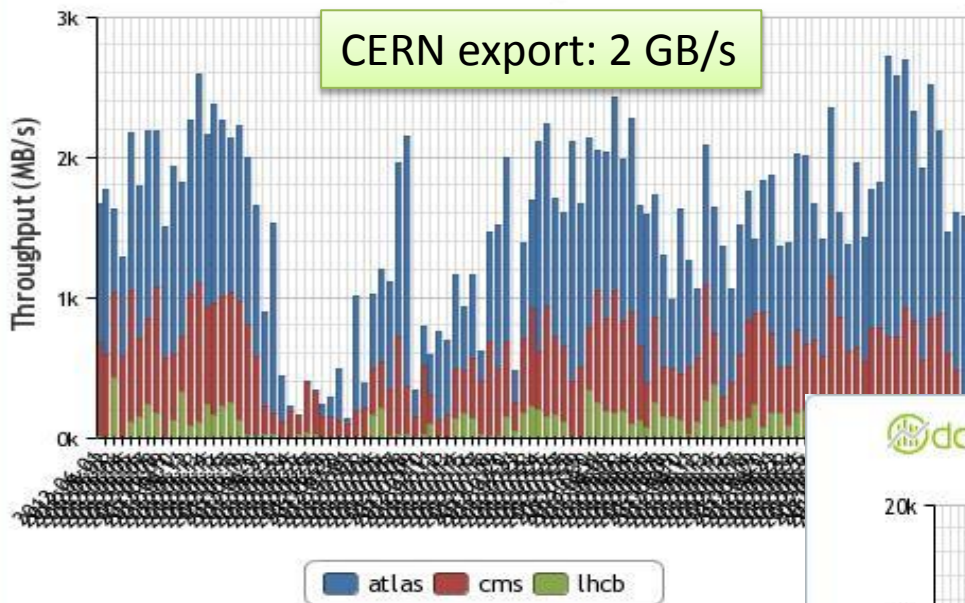


# Data in 2012

dashboard

## Throughput

2012-06-01 00:00 to 2012-09-14 00:00 UTC

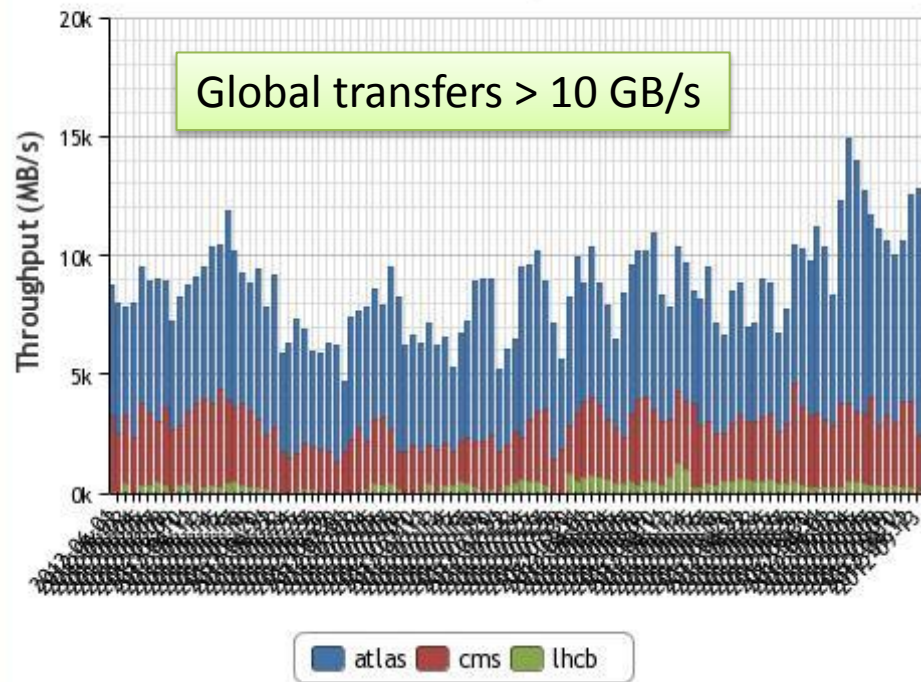


June – Sep 2012

dashboard

## Throughput

2012-06-01 00:00 to 2012-09-14 00:00 UTC



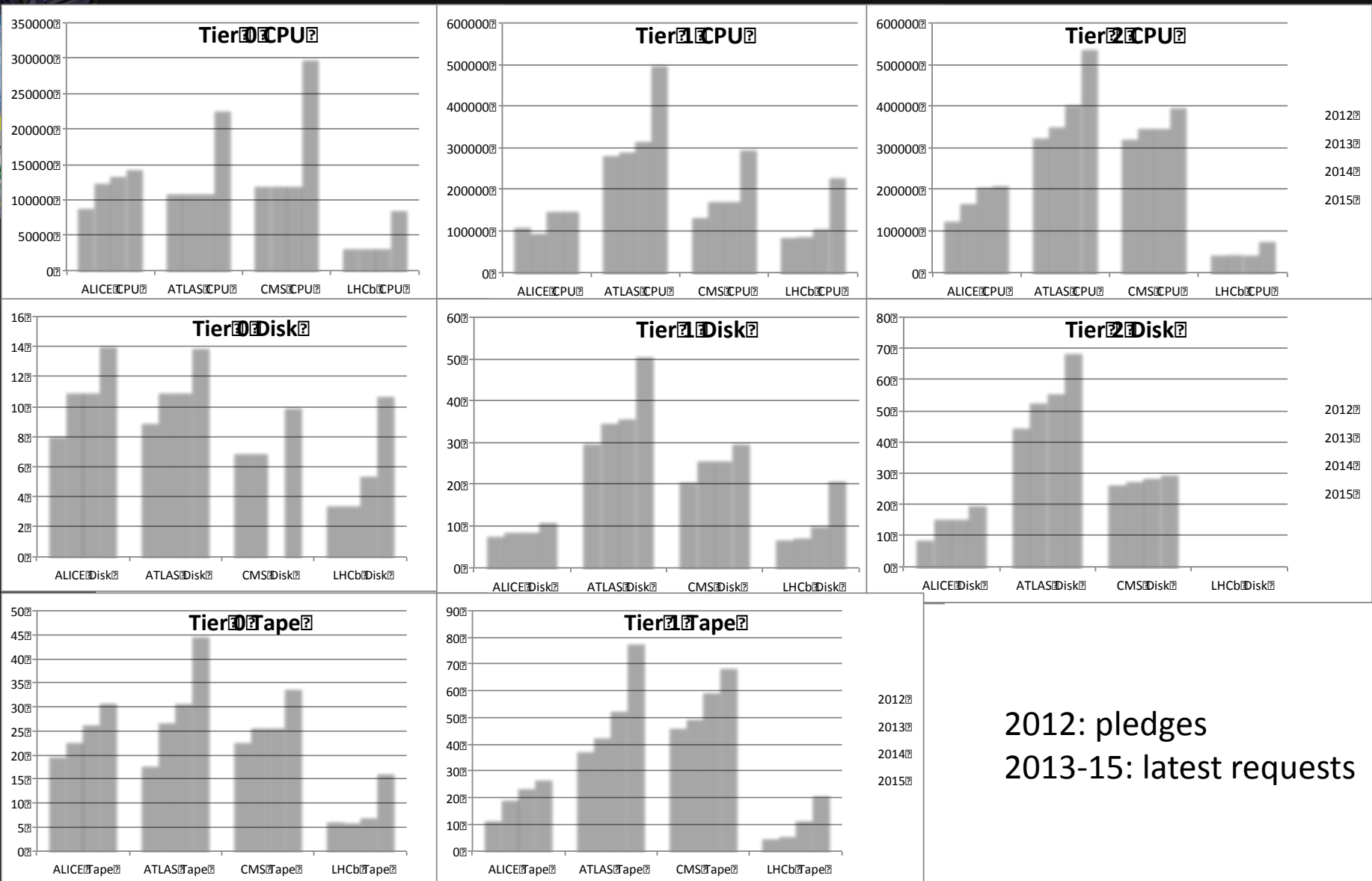
# Operations

- Operations over the summer quite smooth
- No particular problems
- Ongoing LSF issue at CERN:
  - Slowdown of response – heavy user load
  - Related to scale & complexity of CERN set up
  - Some mitigations being implemented
  - Review long-term strategy

# Tier 0 upgrades

- CERN CC – extension
  - Scheduled for completion Nov 2012 – still on track
  - Required for 2013 equipment installation
- Wigner centre
  - Site visit last week – progress on schedule
  - Expect to be able to test first installations in 2013
  - Networking CERN-Wigner (2x100 Gb): procurement ongoing
  - Latency testing for 2 months
    - Fraction of Ixbatch with 35 ms delay – no observed effects

# Evolution of resources



2012: pledges  
2013-15: latest requests

