



2012 RESOURCES UTILIZATION REPORT AND COMPUTING RESOURCES REQUIREMENTS 2013-2017

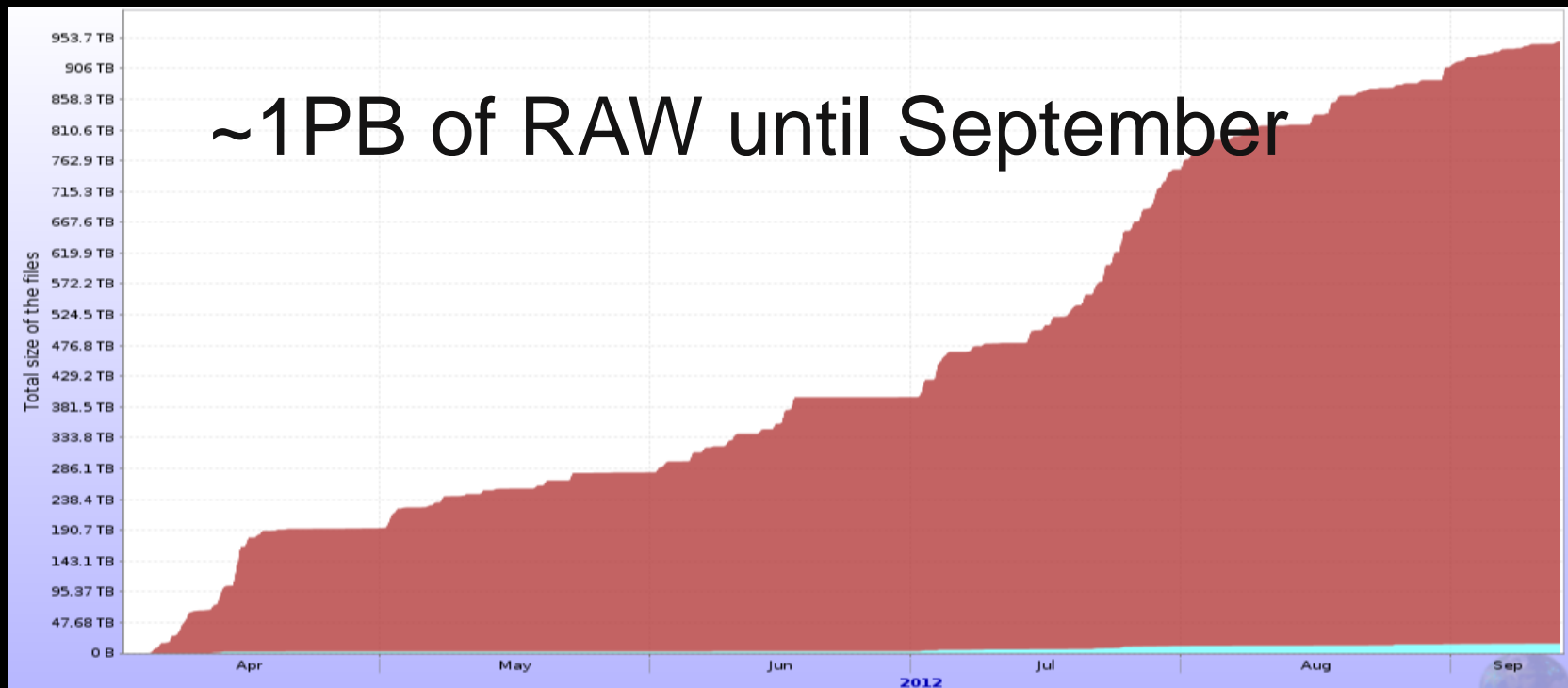
September 24, 2012

A quick glimpse of 2012

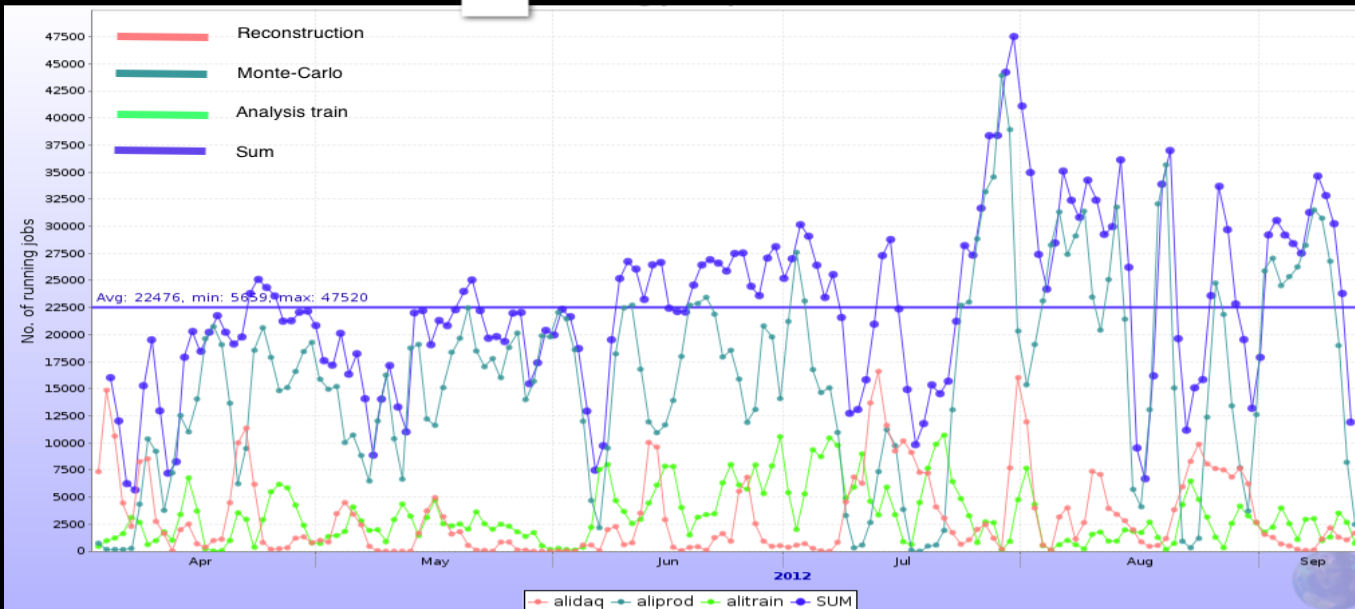
- Standard data taking year for ALICE
- p-p – emphasis on rare triggers, high P_t (Calorimeter)
- pilot p-A run (2.5 million events)
- long p-A run in February 2013 (still counts as ‘2012’)
 - Does not require additional computing resources
- Stable performance of all Grid sites, exceptional of T0

2012 - RAW

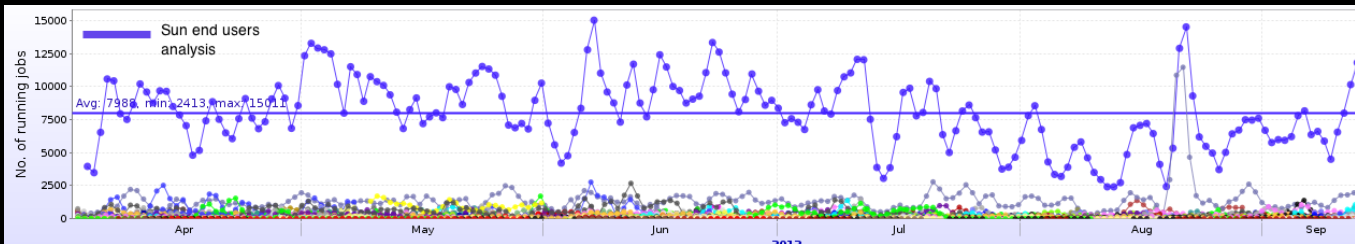
- Standard treatment – 2 copies of RAW data
- One at T0, one replica at T1s, proportional to the fraction of mass storage capacity



CPU per activity



Organized activities
~80% of CPU



Chaotic user analysis
~20% of CPU

Increase of CPU for analysis trains, proportional decrease of chaotic

A Large Ion Collider Experiment



LHC SCHEDULE

LHC SCHEDULE

... OUR ESTIMATE FOR p-A

- 2012-2013
- p-p – about 80% of the required event sample

	Effective time (s)	Number of events	Effective trigger rate (Hz)
pp (2012)	3.4×10^6	1.2×10^9	314
pA (2013)	5.1×10^5	3.0×10^8	800



LHC SCHEDULE

- 2014: no data

LHC SCHEDULE

... OUR ESTIMATE

- 2015-2017: standard data taking years

	Effective time (s)	Number of events	Effective trigger rate (Hz)
pp	3.4×10^6	1.7×10^9	500
AA	4.6×10^5	4.2×10^8	925



COMPUTING MODEL PARAMETERS

COMPUTING MODEL PARAMETERS

... FROM 2012 DATA PROCESSING

- CPU power
- Stable for RAW data and MC processing, increasing for analysis trains

kHEP06xs/ event	Reconstruc tion	Analysis Train	End Users Analysis	Monte- Carlo
pp	0.08	0.13	0.01	1.14
AA	2.00	1.99	0.14	90.00

COMPUTING MODEL PARAMETERS

... FROM 2012 DATA PROCESSING

- Data size

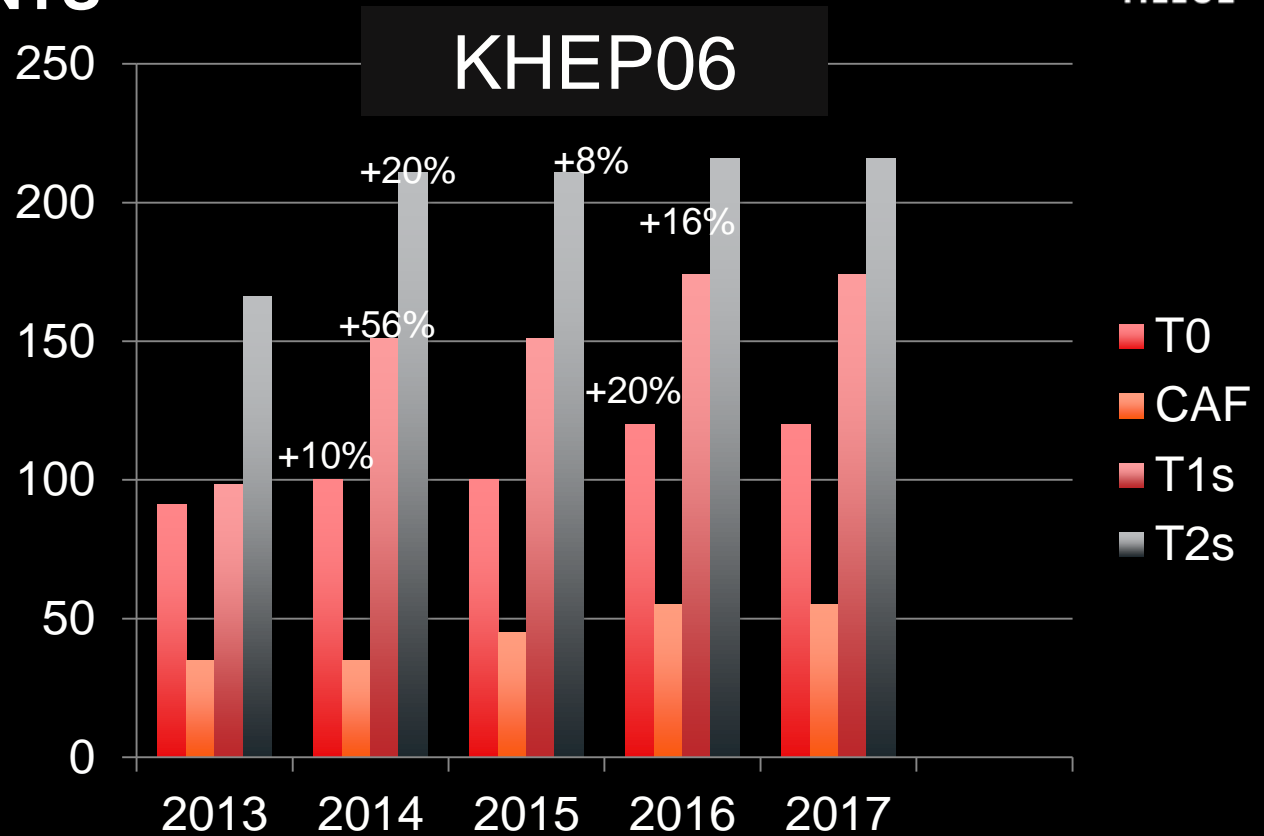
MBytes/event	Raw	ESD	AOD	Monte-Carlo
pp	0.41	0.23	0.01	0.37
AA	5.59	5.26	1.10	20.00



REQUIREMENTS

REQUIREMENTS

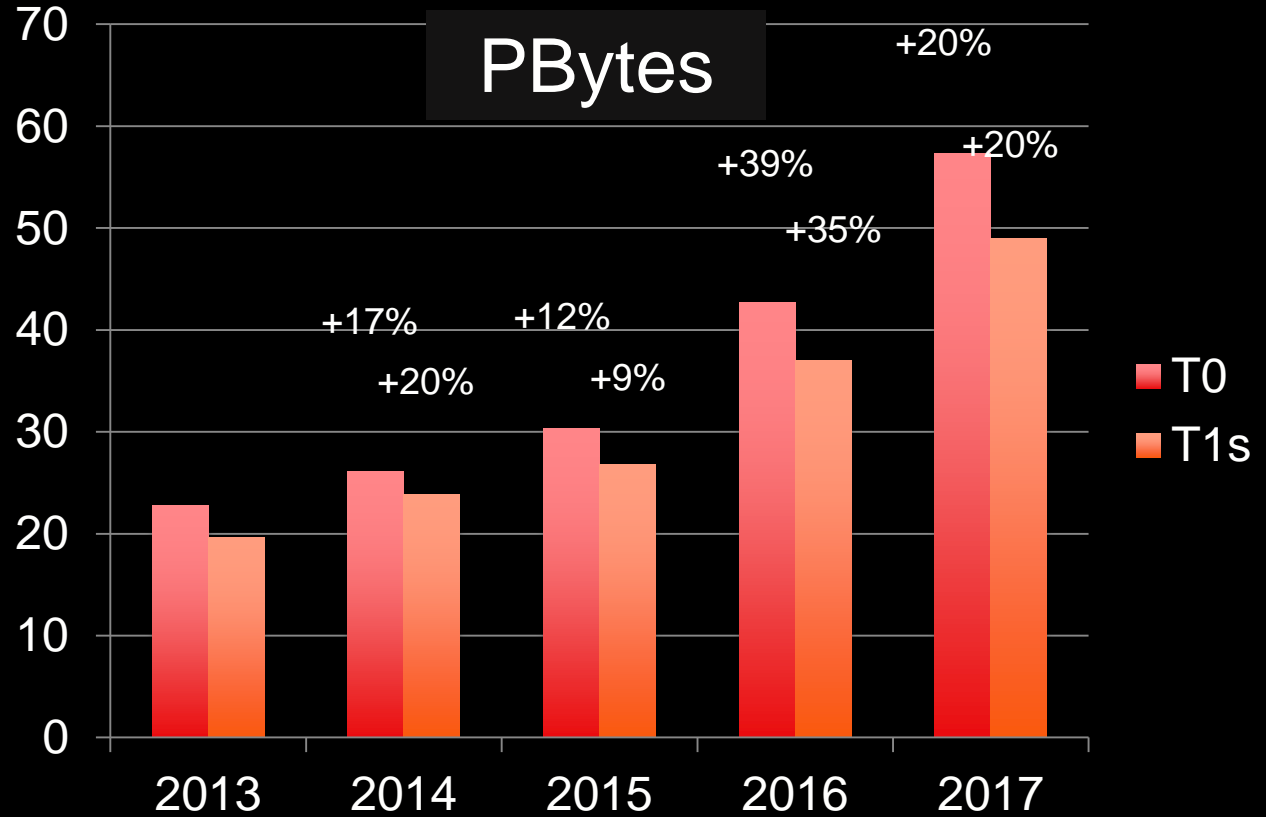
CPU



CPU(KHEP06)	T0	CAF	T1s	T2s
2013	91	35	98	166
2014	100	35	151	211
2015	100	45	151	211
2016	120	55	174	216
2017	120	55	174	216

REQUIREMENTS

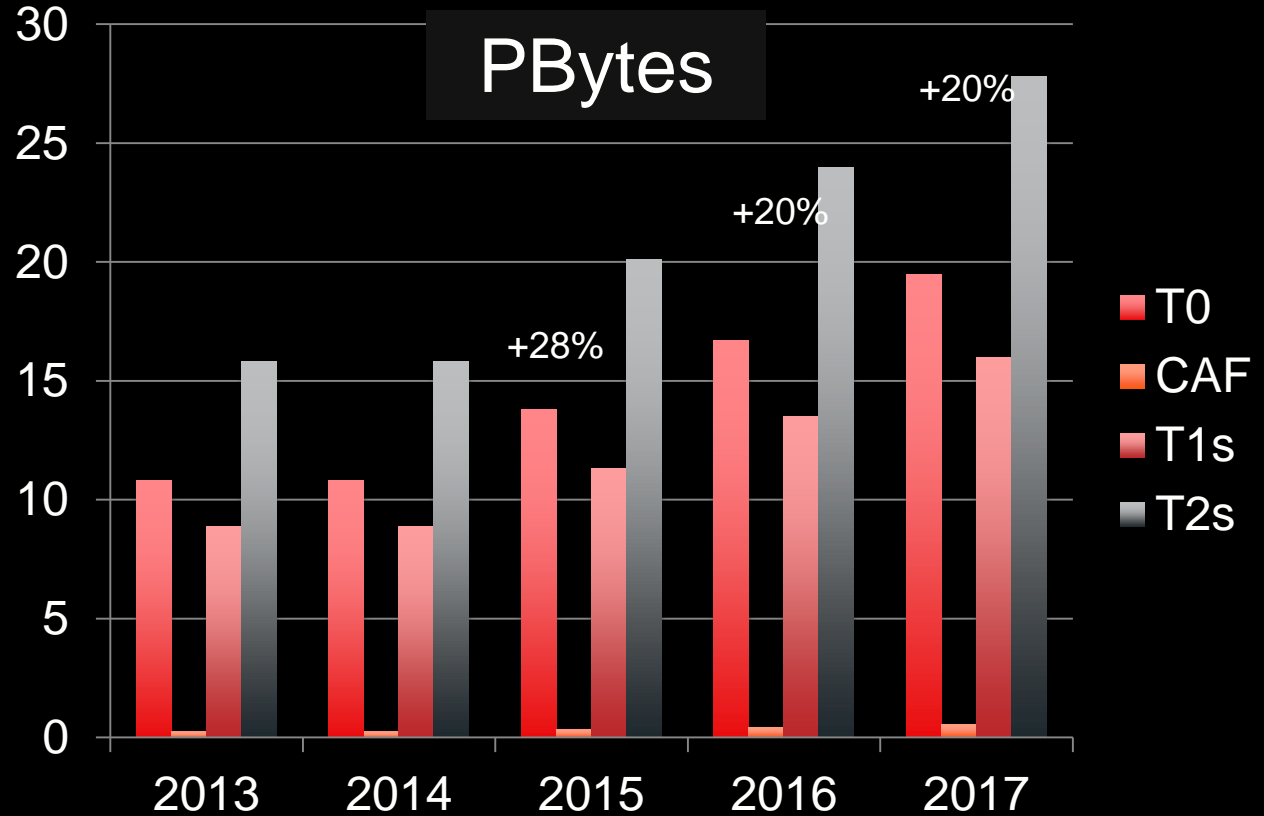
TAPE



Year	Tape [PB]	T0	T1s
2013		22,8	19,6
2014		26,1	23,9
2015		30,3	26,8
2016		42,7	37,0
2017		57,3	49,0

REQUIREMENTS

DISK



	Disk(PB)	T0	CAF	T1s	T2s
2013		10,8	0,24	8,9	15,8
2014		10,8	0,24	8,9	15,8
2015		13,8	0,34	11,3	20,1
2016		16,7	0,44	13,5	24,0
2017		19,5	0,54	16,0	27,8