

Two Higgs Doublets Models

heavy Higgs \leftrightarrow modified Higgs couplings

$$m_h^2 \approx m_Z^2 + 16\delta_\lambda v^2$$

$$125^2 \text{GeV}^2 = 91^2 \text{GeV}^2 + 86^2 \text{GeV}^2$$

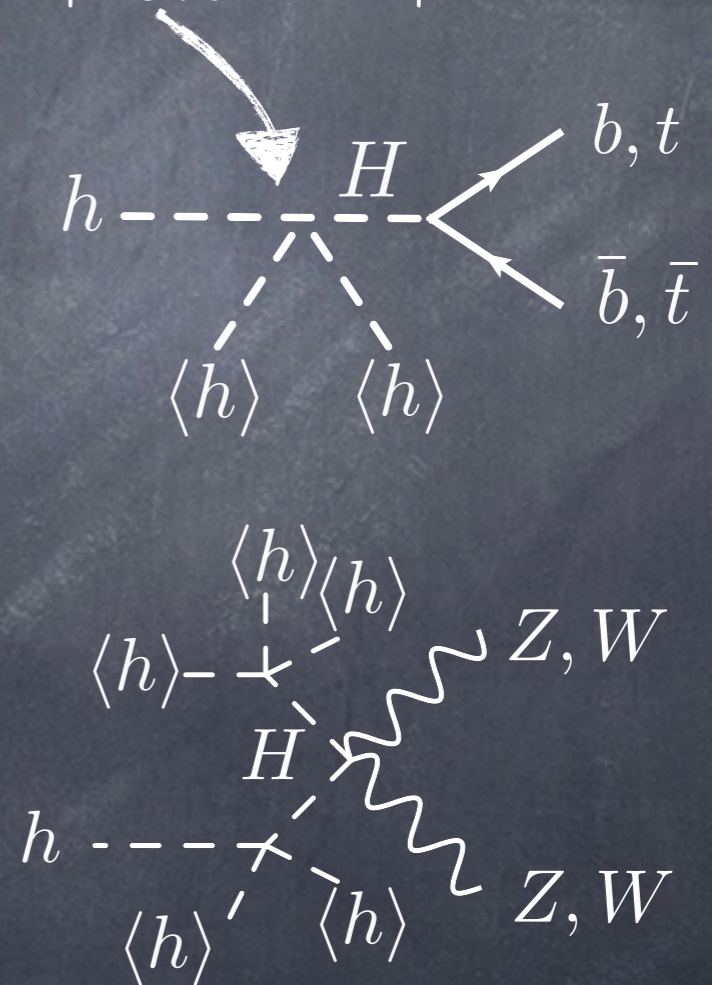
Need ~~SUSY~~ contributions to $V(h,H)$
(Heavy stops, D-terms, F-terms, ...)

$$\Delta V = \delta_\lambda h^4 + \delta h^3 H + \dots$$

$$\frac{y_b}{y_b^{SM}} = 1 - 4\delta \tan \tilde{\beta} \frac{v^2}{m_H^2}$$

$$\frac{y_t}{y_t^{SM}} = 1 + 4\delta \cot \tilde{\beta} \frac{v^2}{m_H^2}$$

$$\Delta c_V \sim \frac{v^4}{m_H^4} \sim 0$$



Blum, D'Agnolo, Fan '12; Azatov, Chang, Craig, Galloway '12

Montull, Gupta, FR, '12

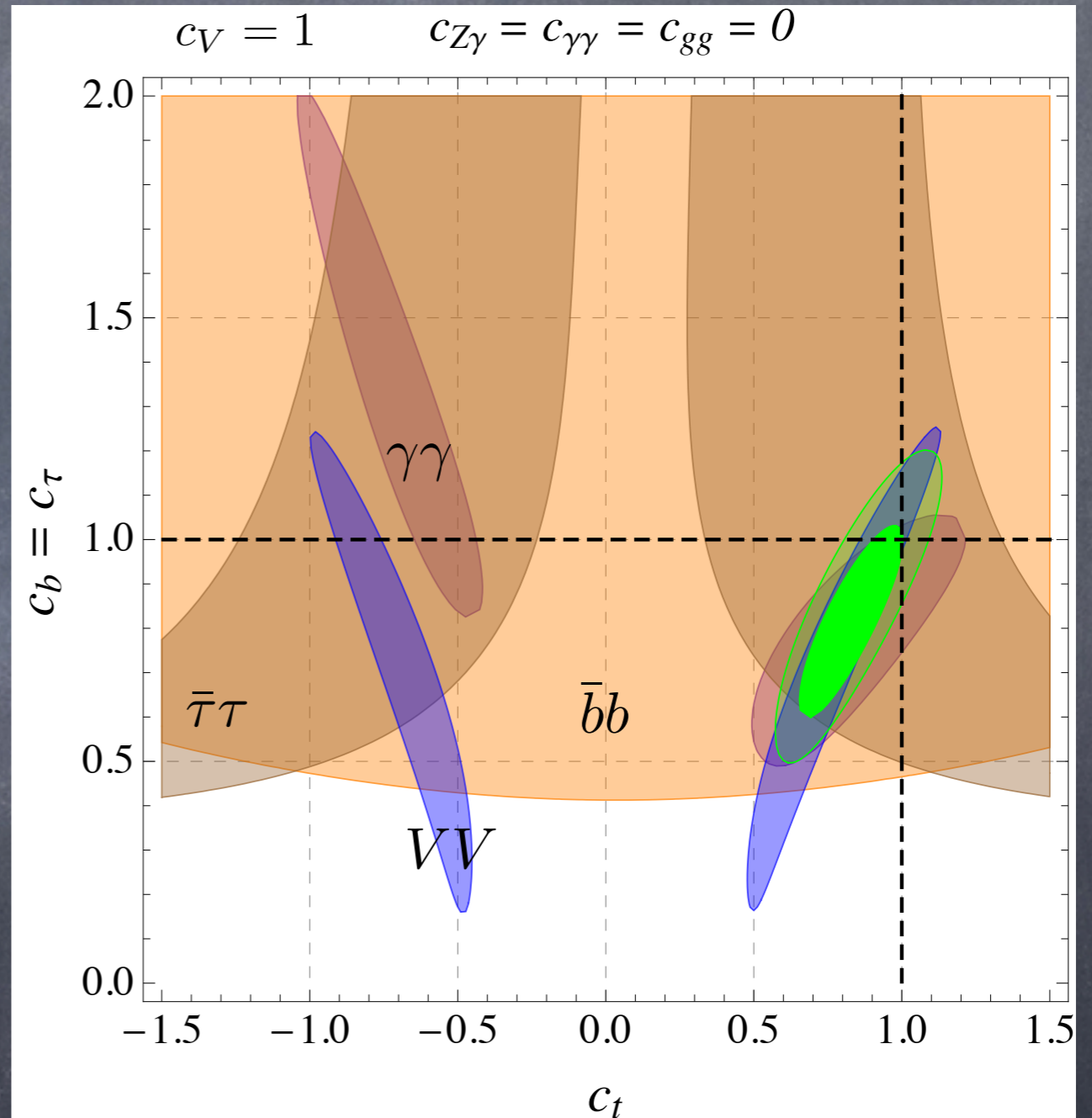
*Ignoring loop effects that couple b and H_u (Gupta, Rzehak, Wells '12)

Two Higgs Doublets Models

$$m_h^2 \approx m_Z^2 + 16\delta_\lambda v^2$$

$$\frac{y_b}{y_b^{SM}} = 1 - 4\delta \tan \tilde{\beta} \frac{v^2}{m_H^2}$$

$$\frac{y_t}{y_t^{SM}} = 1 + 4\delta \cot \tilde{\beta} \frac{v^2}{m_H^2}$$



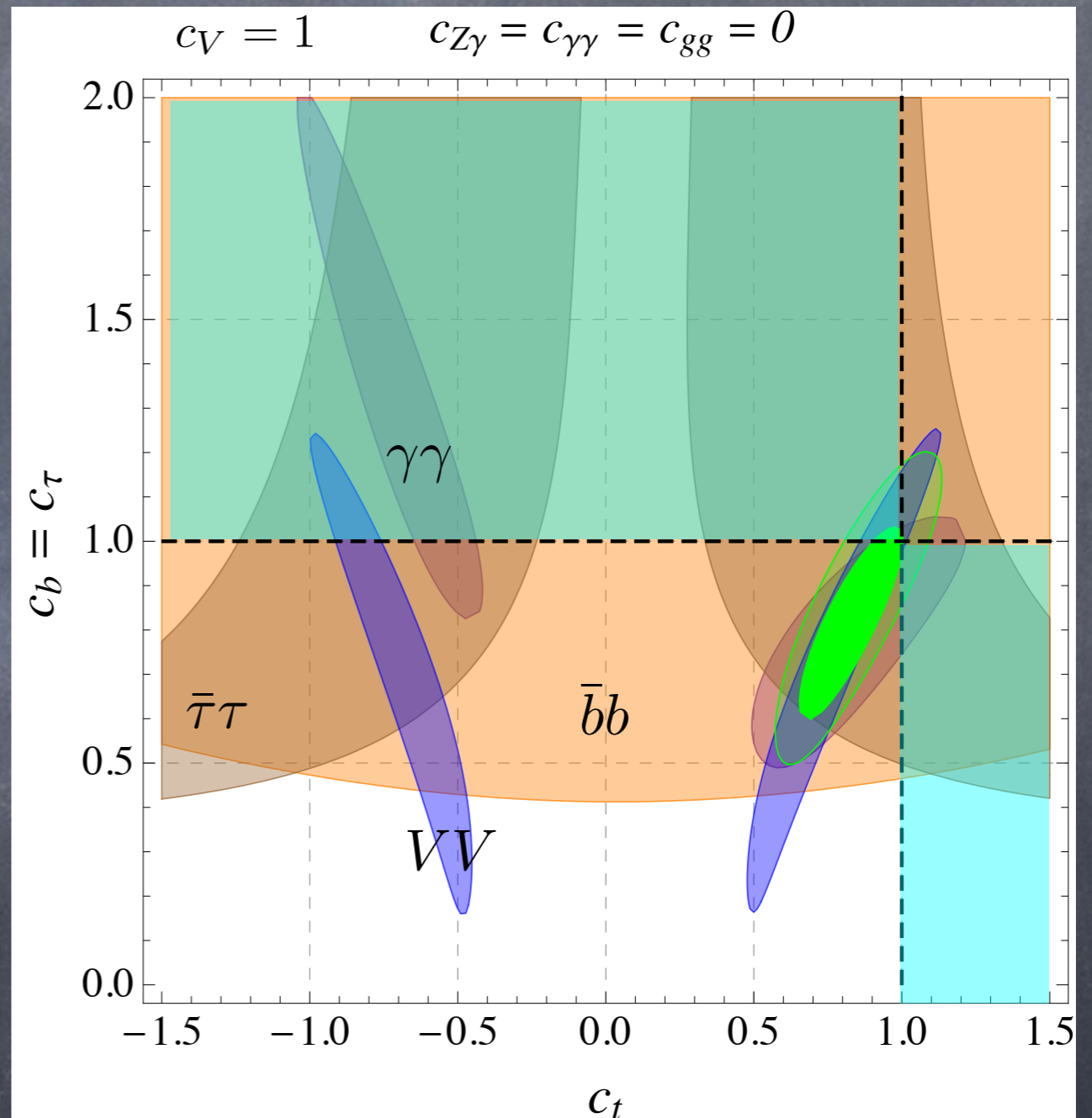
Blum, D'Agnolo, Fan '12; Azatov, Chang, Craig, Galloway '12
 Montull, Gupta, FR, '12

Two Higgs Doublets Models

$$m_h^2 \approx m_Z^2 + 16\delta_\lambda v^2$$

$$\frac{y_b}{y_b^{SM}} = 1 - 4\delta \tan \tilde{\beta} \frac{v^2}{m_H^2}$$

$$\frac{y_t}{y_t^{SM}} = 1 + 4\delta \cot \tilde{\beta} \frac{v^2}{m_H^2}$$



Blum, D'Agnolo, Fan '12; Azatov, Chang, Craig, Galloway '12
 Montull, Gupta, FR, '12

Two Higgs Doublets Models, SUSY

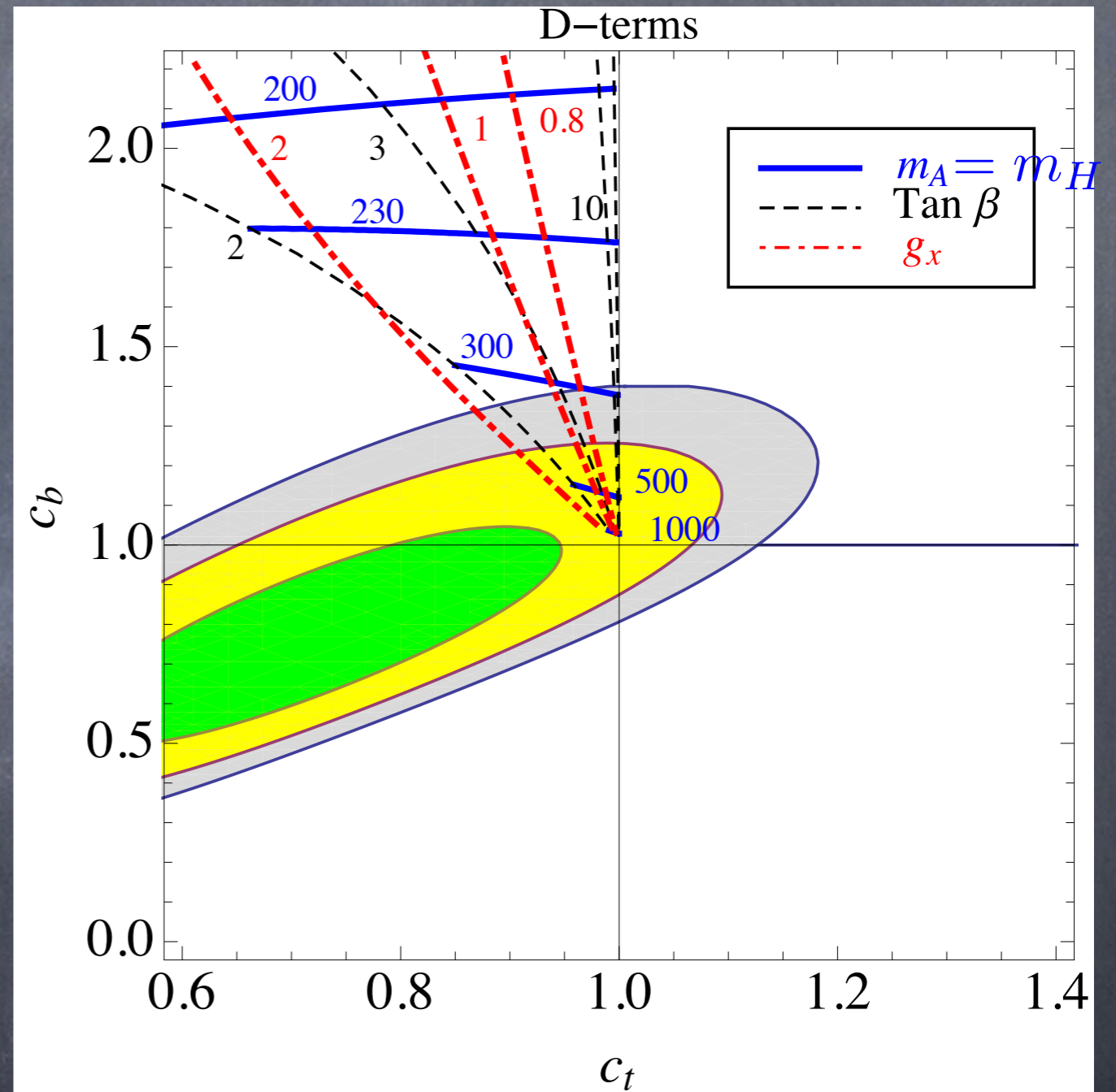
$$m_h^2 \approx m_Z^2 + 16\delta_\lambda v^2$$

$$\frac{y_b}{y_b^{SM}} = 1 - 4\delta \tan \tilde{\beta} \frac{v^2}{m_H^2}$$

$$\frac{y_t}{y_t^{SM}} = 1 + 4\delta \cot \tilde{\beta} \frac{v^2}{m_H^2}$$

D-Terms: $\Delta V = \kappa (|H_1^0|^2 - |H_2^0|^2)^2$

$$\delta = -\frac{m_h^2}{2v^2} \frac{t_\beta}{t_\beta^2 - 1}$$



Blum, D'Agnolo, Fan '12; Azatov, Chang, Craig, Galloway '12
 Montull, Gupta, FR, '12

Two Higgs Doublets Models, SUSY

$$m_h^2 \approx m_Z^2 + 16\delta_\lambda v^2$$

$$\frac{y_b}{y_b^{SM}} = 1 - 4\delta \tan \tilde{\beta} \frac{v^2}{m_H^2}$$

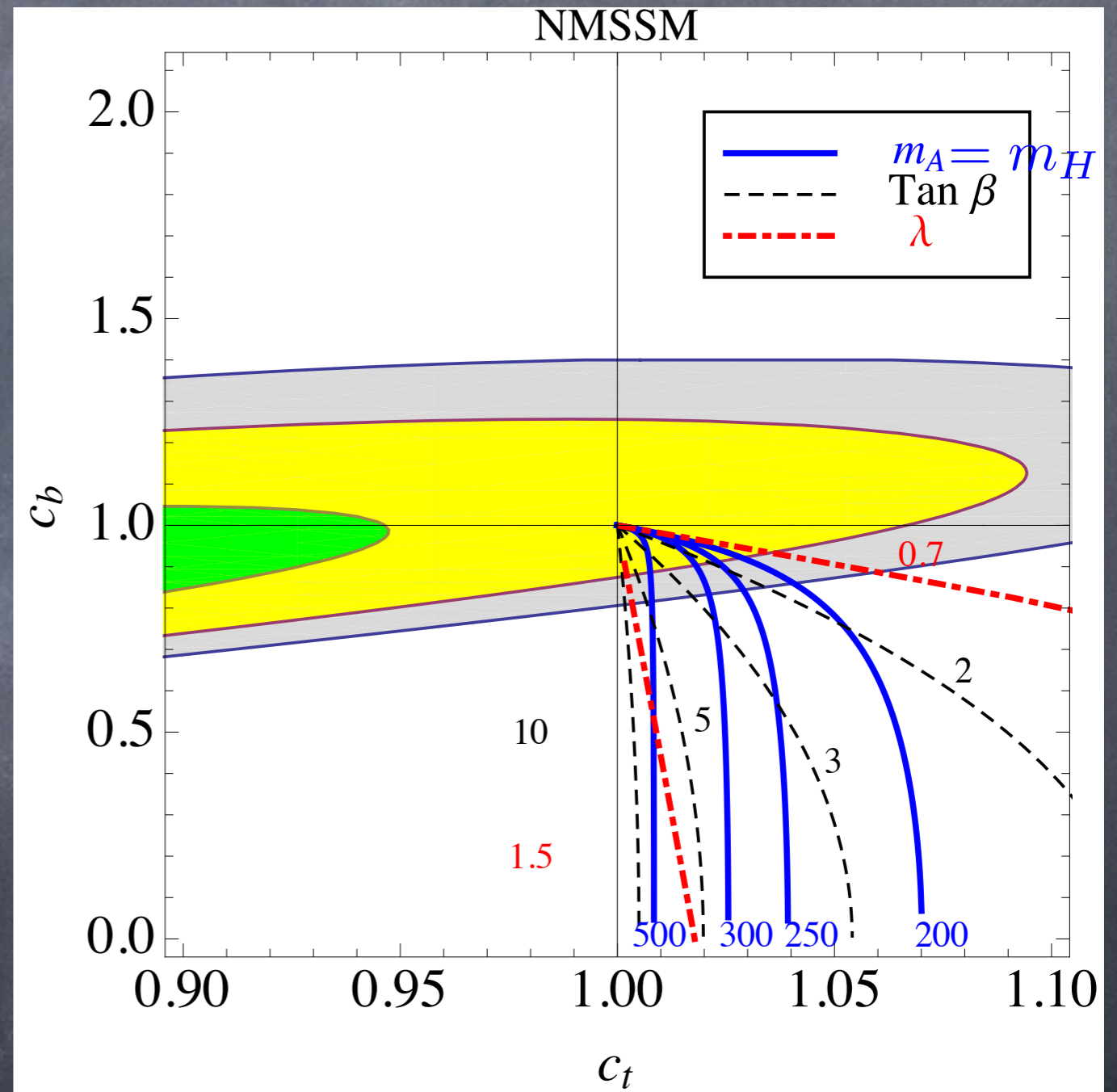
$$\frac{y_t}{y_t^{SM}} = 1 + 4\delta \cot \tilde{\beta} \frac{v^2}{m_H^2}$$

F-Terms (no mixing):

$$\Delta V = -\lambda_S^2 (H_1 H_2)^2 \frac{m_S}{M_S}$$

$$\Delta c_b \approx -t_\beta^2 (60\text{GeV}/m_H)^2$$

$$\Delta c_t \approx (60\text{GeV}/m_H)^2$$



Blum, D'Agnolo, Fan '12; Azatov, Chang, Craig, Galloway '12
Montull, Gupta, FR, '12