



# **CMS Ops overview**

**(last 2 weeks)**

WLCG Operations coordination meeting

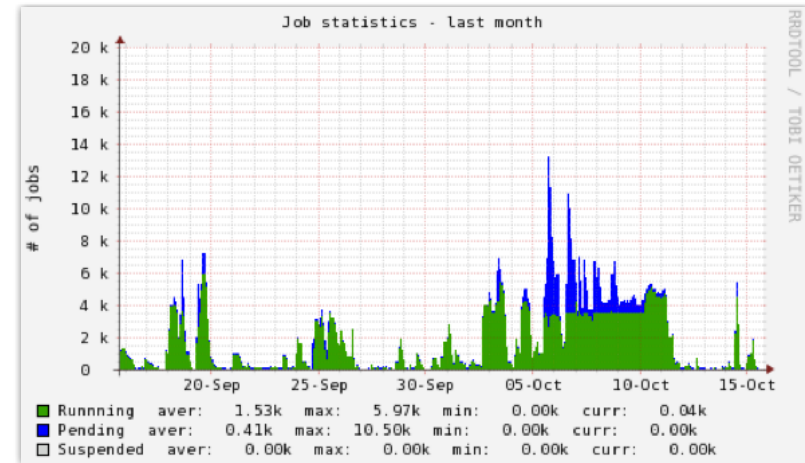
October 18<sup>th</sup>, 2012

Daniele (on behalf of CMS Computing)

# CERN / T0

LHC back operational, the stop period was quite busy for T0 though

- ◆ processing data from the week before



## Some notes on EOSCMS

- ◆ EOSCMS upgrade to 0.2.18 scheduled for Oct 11th was “partially” cancelled and rescheduled for Oct 18th
  - due to instabilities seen on EOSATLAS with this version, only SRM-EOSCMS was upgraded on the 11th, the rest of the work was postponed by 1 week
- ◆ The BeStMan SRM gateway to EOSCMS was stuck for 2h both on Oct 14 and 15
  - we were informed by Jan, but apparently not noticed by any CMS users
- ◆ EOS namespace crashed on Oct 17th evening. Recovered quickly (INC:179247)
  - seems related to the cmsd daemon, kept down since then, atm CERN EOS is not part of the federation

## Some problems with job submission to LSF at CERN reported by the CRC (Stefano)

- ◆ IT reminded about a replacement of the LSF master HW on Monday, causing a service degradation (btw, it was on IT-SSB, not in GOCDDB), but the timing was different
- ◆ then, it was noted by IT that 2 CMS VOBOX nodes needed their LSF daemon to be restarted

## CASTORCMS monitoring shows low availability -> transfers stuck from P5 -> escalated to ALARM (GGUS:87382)

- ◆ at 5am on Oct 16th, transfers from P5 stopped, once fixed the data was sent out of order, which cause problems to calibs; DB experts wiped the calibs and T0 Ops ran express again to recover the runs, PromptReco delay

# T1

## ASGC

- ◆ Tape migration stuck, blocking prompt skimming for a primary dataset, took some days (Sav:132904, GGUS:87262). Fixed.
- ◆ Some permission problems affect T1-T2 transfers. Working on it.

## KIT

- ◆ Hitting CERN Frontier launchpad (Sav:132973, GGUS:87345): related to Hepix storage lab test activity on a machine at KIT by CMS. Fixed.

## CNAF

- ◆ no issues observed so far with this, but high transfer activity due to dataset re-replication elsewhere to increase the parallelization of some processing campaigns at T1 sites

## Other T1s:

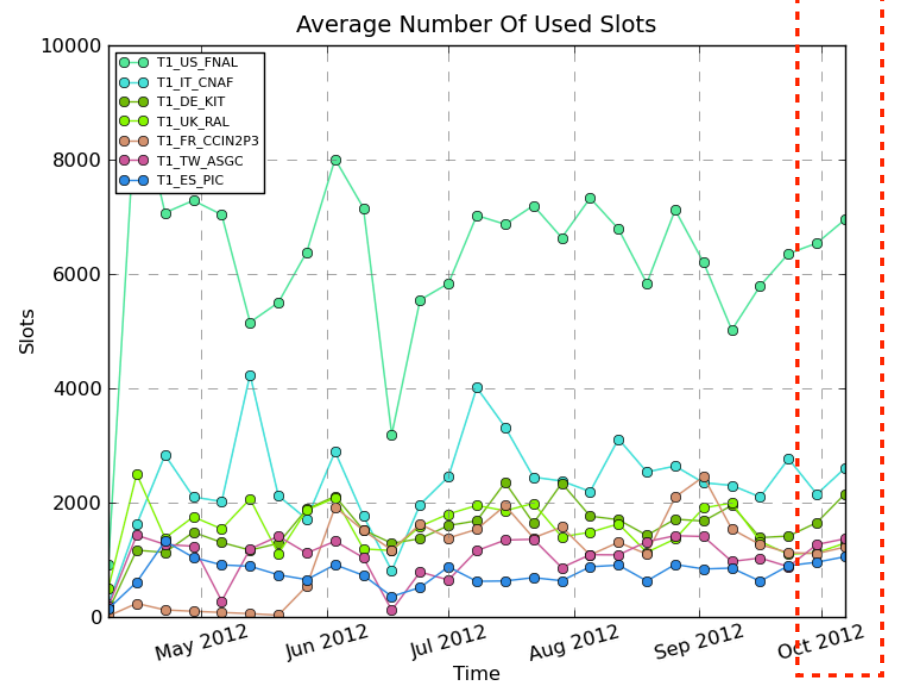
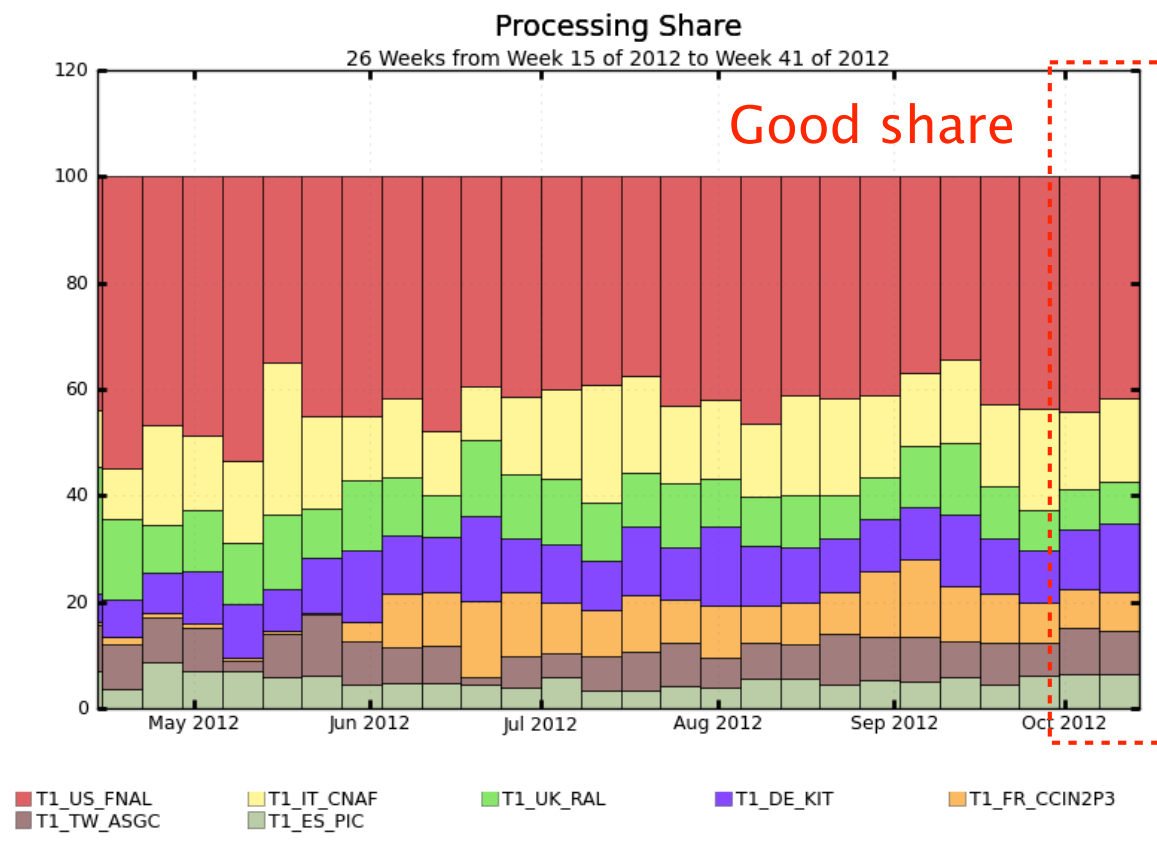
- ◆ NTR

## General message regarding *\*all\** T1s:

- ◆ Recommendation to manually upgrade *transfer-fts* to version 3.7.10-1 on all FTS servers (instructions in GGUS:81844). Nicolò
  - as of Monday this week, done at CNAF, IN2P3, RAL

# T1 [plots]

The highlighted area shows last 2 weeks (focus of this meeting)



# T2

In general, smooth.

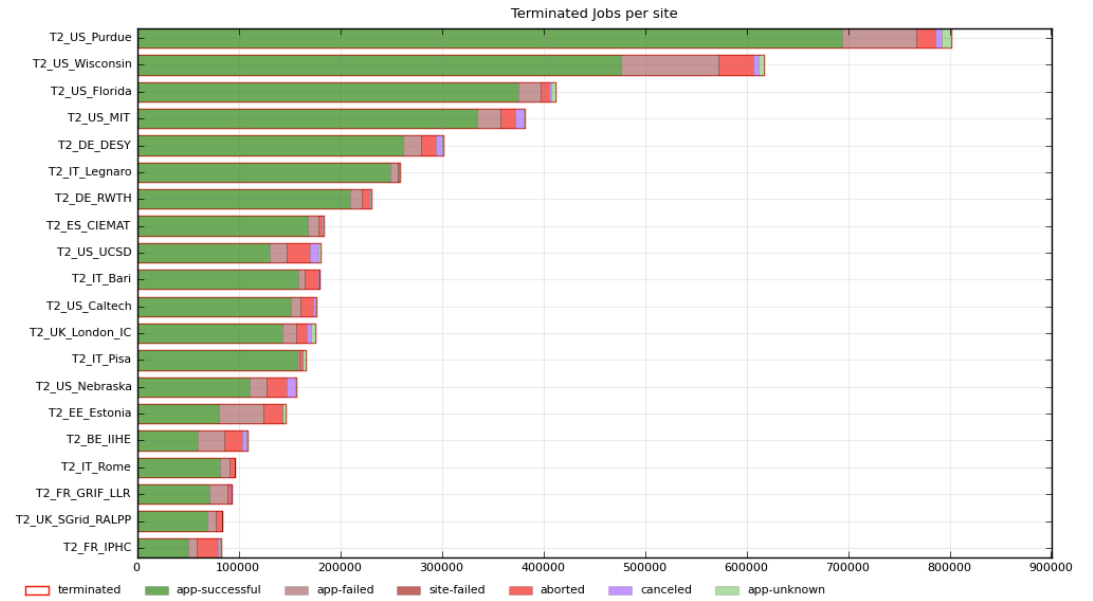
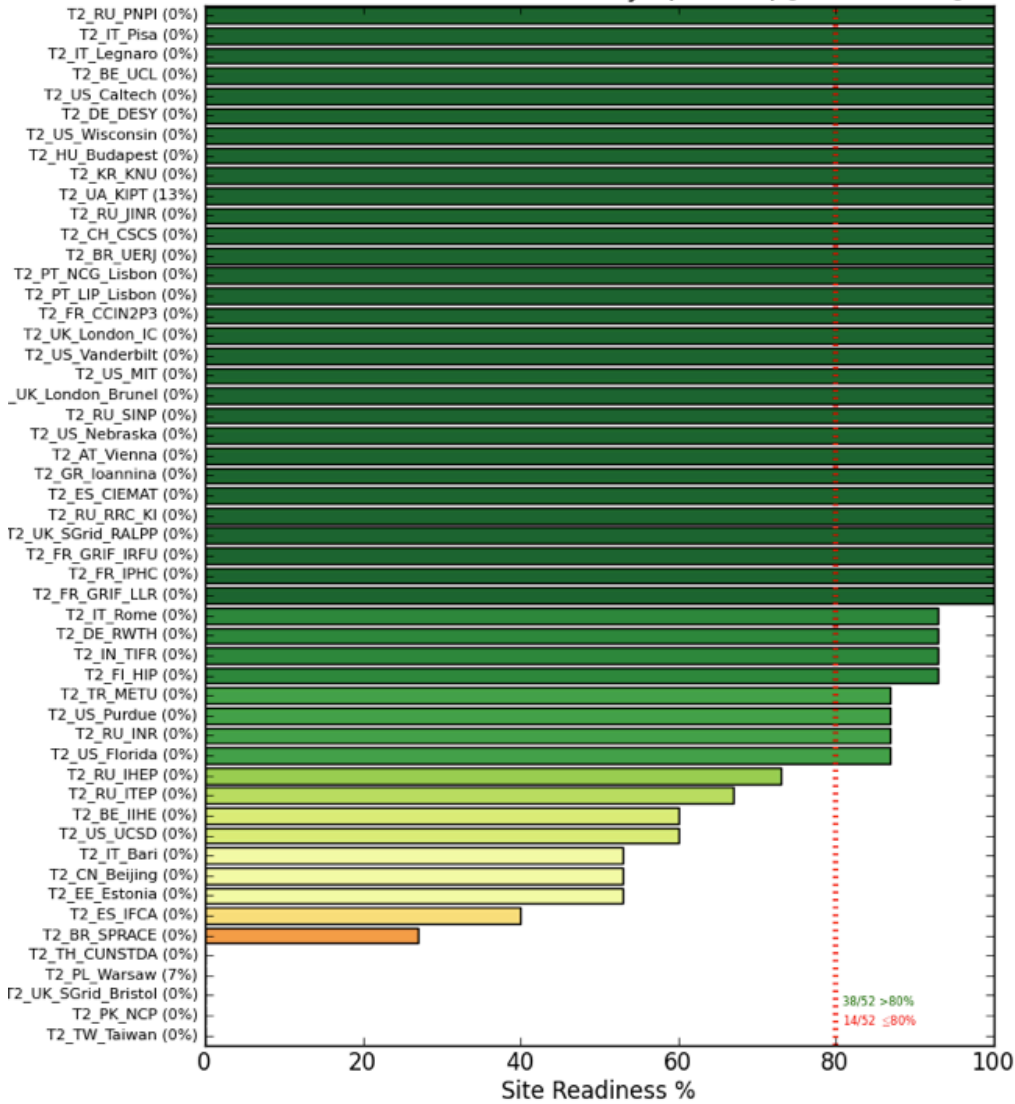
Updated shifter instructions about HammerCloud tickets to sites

- ◆ Messages tuned a bit, to notify sites with more useful information for them to take actions

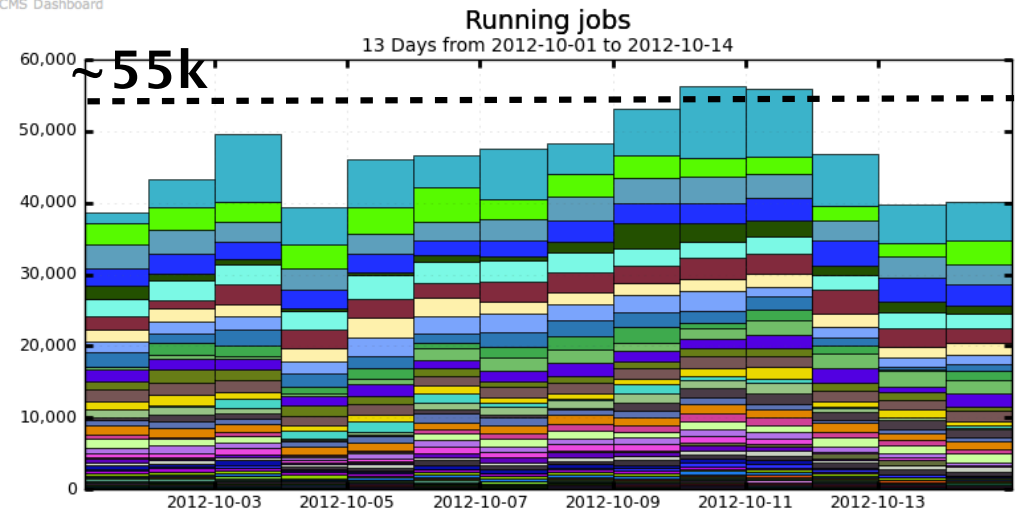
# T2 [plots]

All plots cover last 2 weeks (focus of this meeting)

### T2 Readiness Rank last 15 days (+SD %) [2012-10-15]

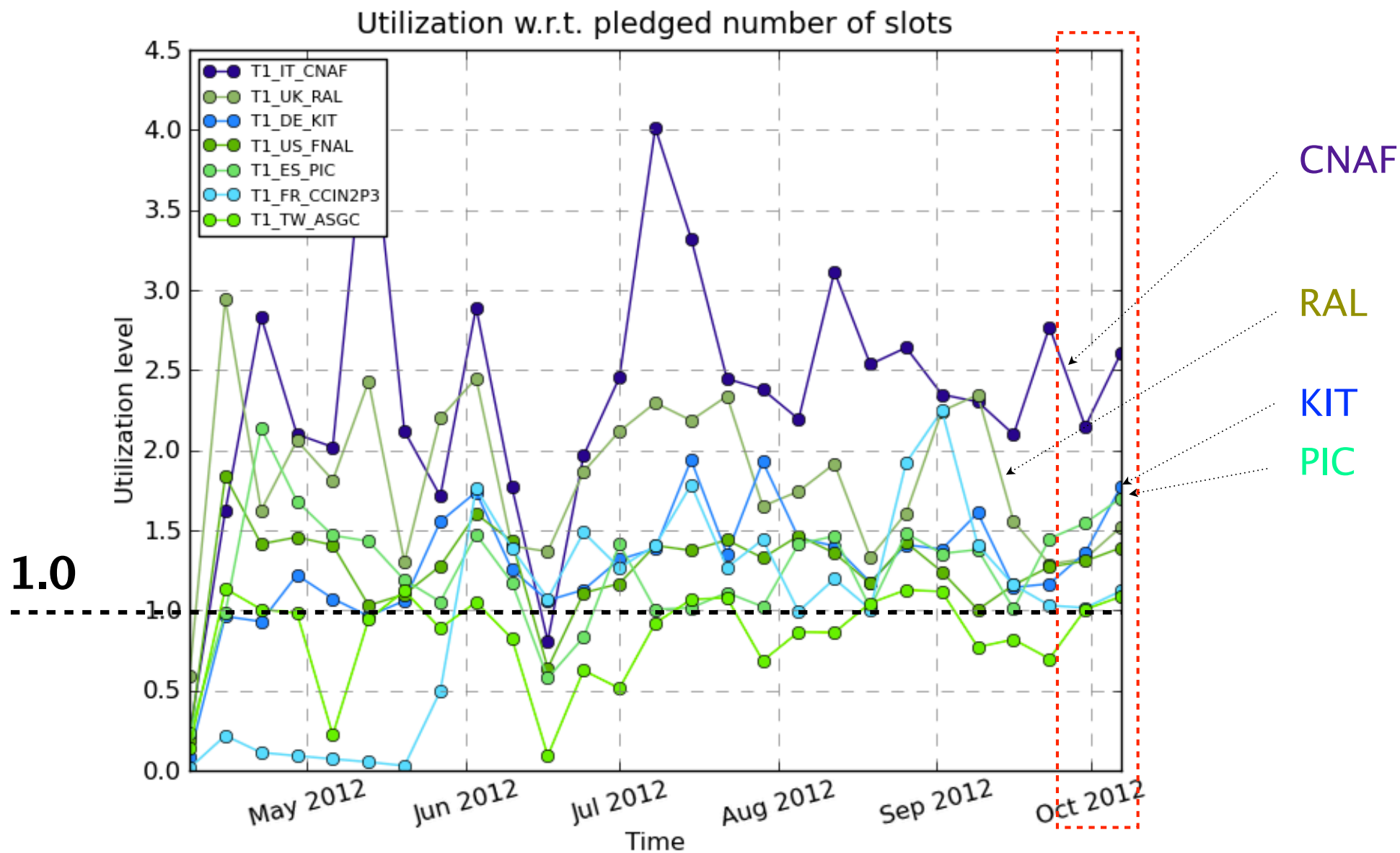


CMS Dashboard



# Highlight on just one activity

Today: processing at T1s: over last 2 weeks, all T1s offered to us more than their pledges (great..)



# Plans for next 1-2 weeks

Back into pp mode now: this drives (ops) priorities

Processing at T1s is not expected to decrease

- ◆ also, improving on handshakes among teams to always have enough processing requests to satisfy, and keep the system busy with useful work

Still tuned to possibly observe an analysis burst due to HCP'12 ?

- ◆ all smooth so far