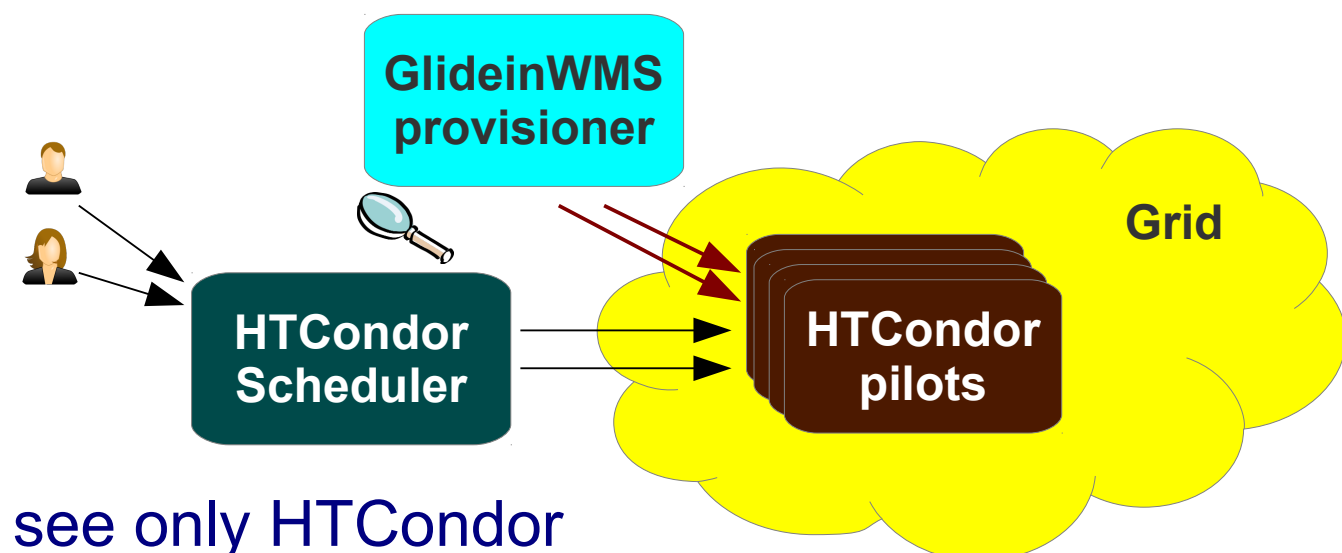


# Using ssh and sshfs to virtualize Grid job submission with rcondor

by  
I Sfiligoi<sup>1</sup> and J M Dost<sup>1</sup>  
isfiligoi@ucsd.edu jdost@ucsd.edu

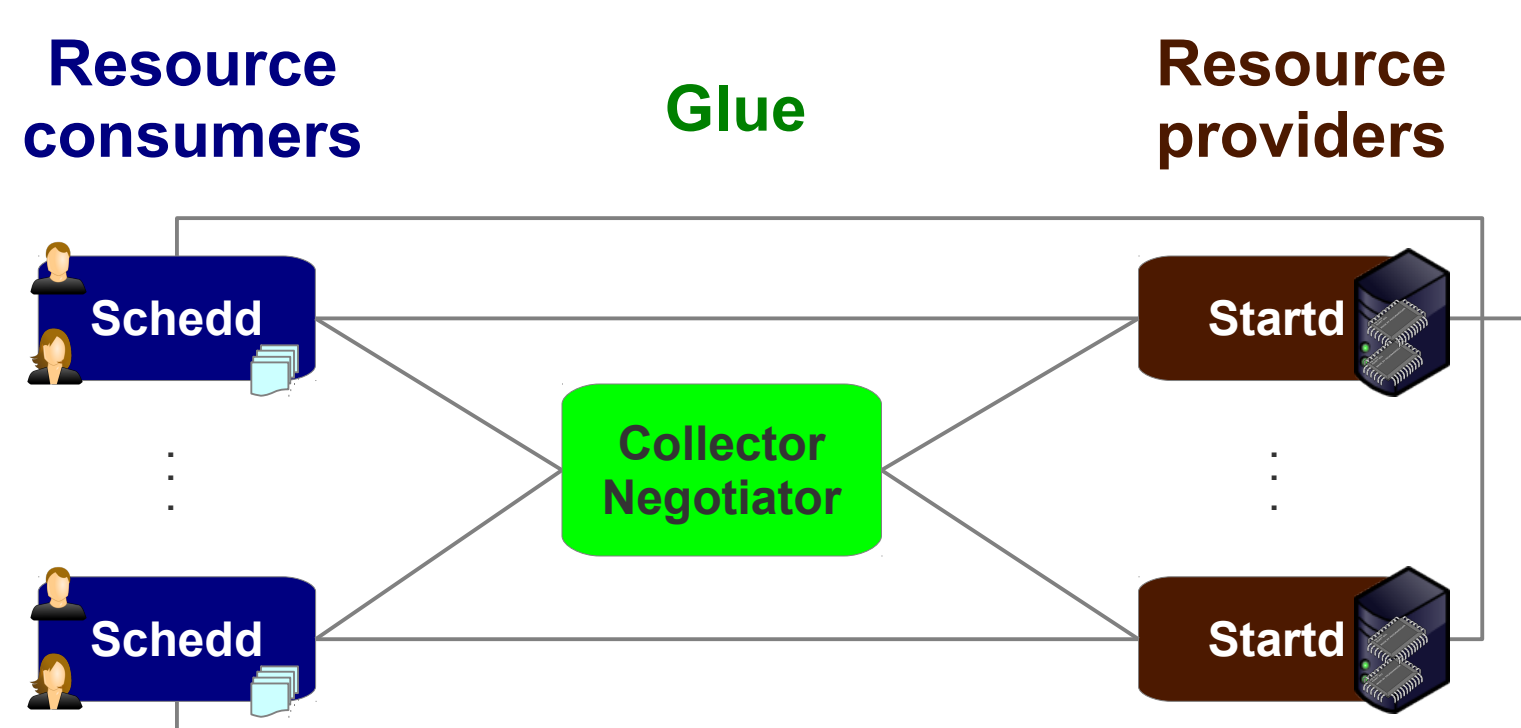
<sup>1</sup>University of California San Diego, La Jolla, CA 92093, USA

## glideinWMS Grid job submission



Users see only HTCondor

## HTCondor architecture



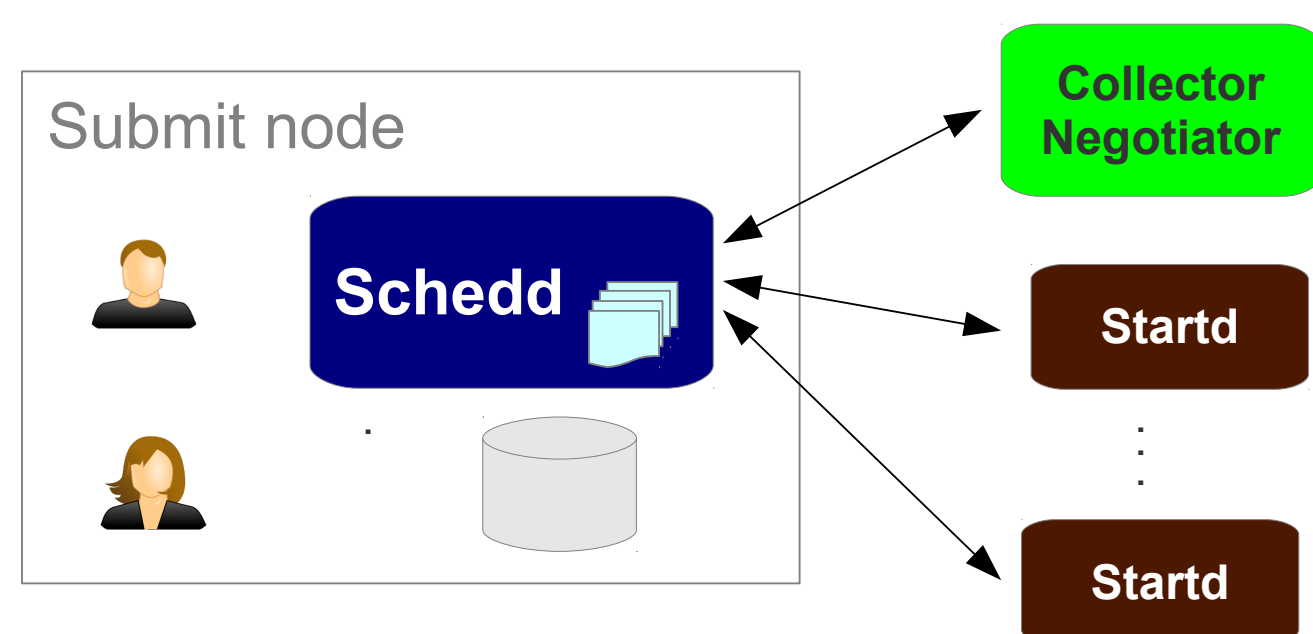
## No HTCondor "client"

### Submit node is a server

- Actively manages the user jobs
- Responds to requests

### Users must be local to the HTCondor process

- Uses OS authentication
- Needs access to user files



## Not suitable for the end users

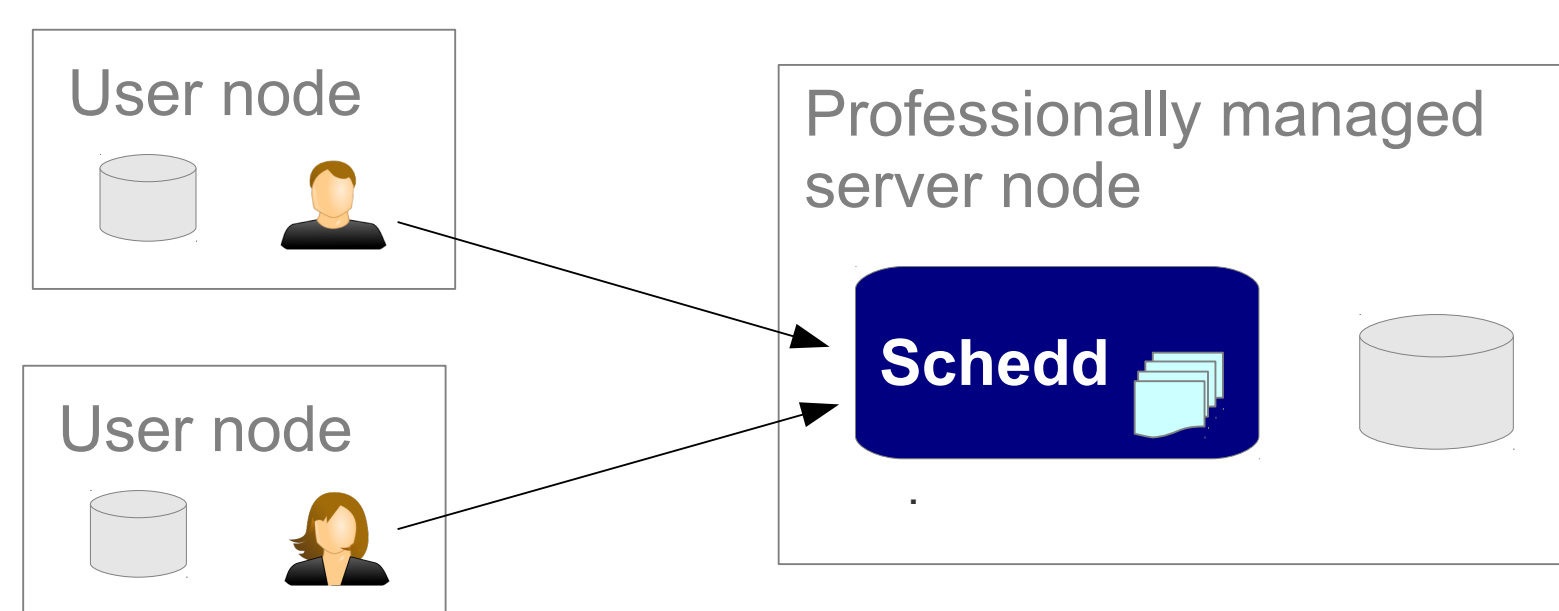
### Security risks

- Incoming connectivity
- All security configuration on the submit node
- Submit node controls user authentication and authorization

### Unfriendly to non-dedicated hardware

- e.g. laptops
- Requires always-on operation
  - Must be on a public network with static IP address

## Requires a "cloudy" deployment



## Traditional approach - SSH

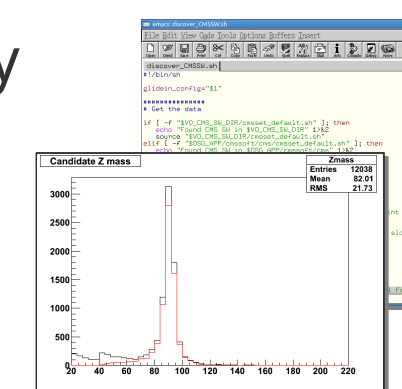
"Let the user ssh into the submit node and work there"



## A need for local look-and-feel

Users like to use locally installed software

- Special purpose
- GUI
- Automation

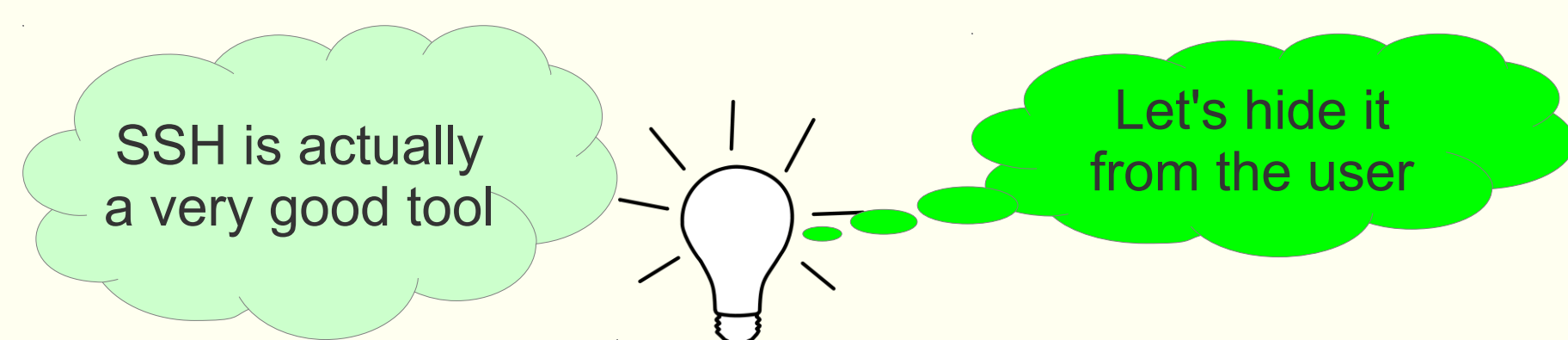


Network latency may be a killer on the go

- Even if bandwidth OK
- Even if user likes cmdln tools

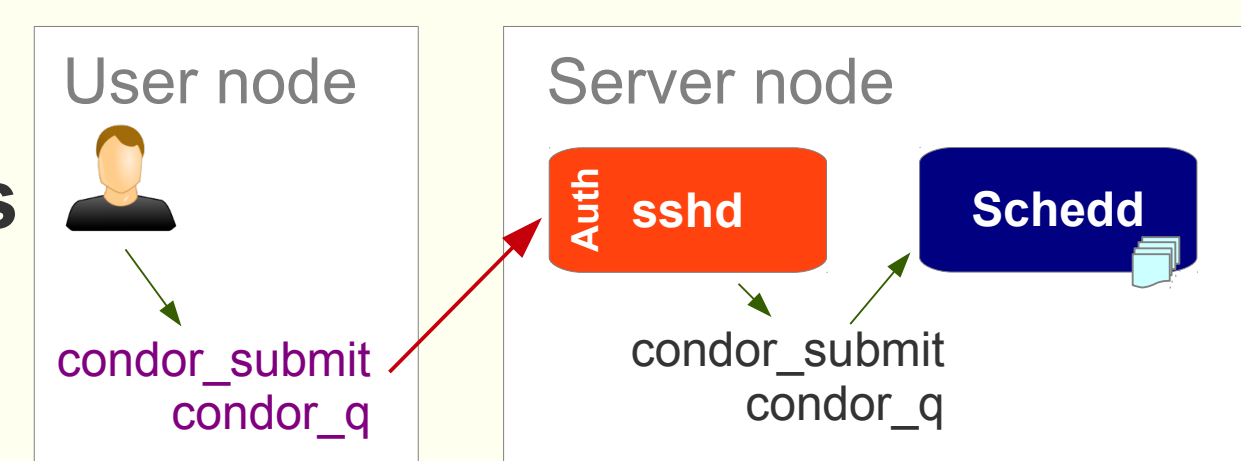
## Introducing the rcondor package

<https://htcondor-wiki.cs.wisc.edu/index.cgi/wiki?p=RemoteCondor>  
[http://www.slideshare.net/igor\\_sfiligoi/remote-condor-convenience-control](http://www.slideshare.net/igor_sfiligoi/remote-condor-convenience-control)



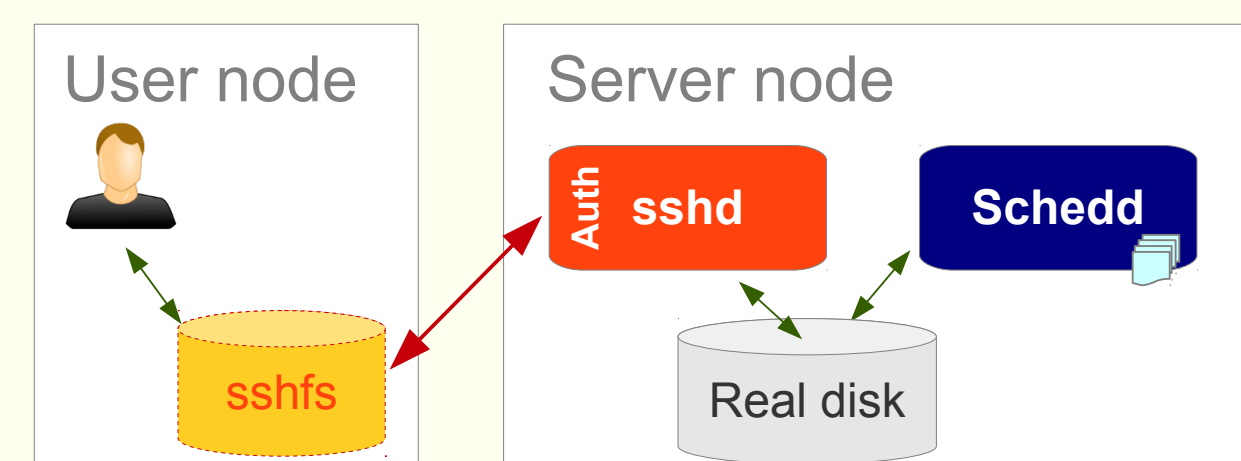
## Provide wrappers for HTCondor cmds

- There are only O(30)
- Exe same command over ssh



## Use sshfs for data access

- Data stays on the server
- Accessible to HTCondor
- But feels like it was local (just slower)



Wrappers sshfs aware → automatic path remaps

Current packaging primitive, mostly due to lack of user push.  
Contact us if you think it is a problem for you.

## Alternatives

### HTCondor remote access

- True client solution
- Tricky security setup
- Only partial functionality e.g. no DAGMan
- Explicit data staging

### HTCondor-C

- Works in offline mode
- Still a server
- But can be firewalled
- Tricky security setup
- Explicit data staging

### BOSCO

- Works in offline mode
- Uses SSH
- Still a server
- But can be firewalled
- Explicit data staging