



ATLAS Distributed Computing Operation Shift Teams experience during the discovery year and beginning of the Long Shutdown 1



ATLAS Experiment : <http://atlas.ch>

- Exciting Run I with discovery in July 2012, ended in February 2013
- Long Shutdown 1 (LS1) : 2013-2015
- ATLAS Distributed Computing (ADC) : over 120 computer centers

ADC Operation Shifts with 24 hour coverage

Run I (part) : 2012 – February 2013

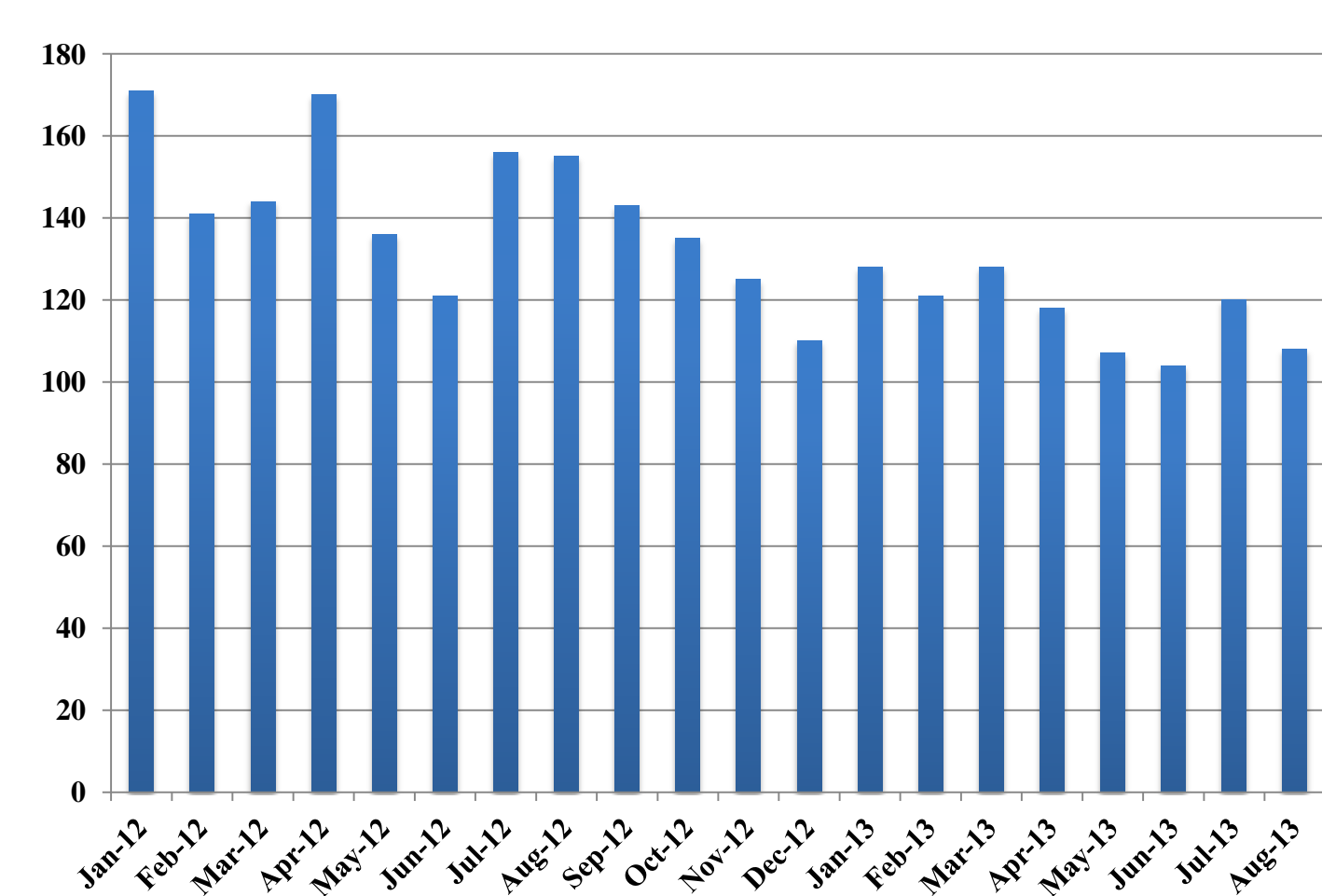
LS1 (part) : rest of 2013

ADC Operations Shift | Processing on the Grid (data and MC). File transfers between all Tiers.

ADC Manager on Duty | Core services of ADC

ADC Comp@P1 | Tier-0 data processing and data export

Shifter tools



- GGUS tickets are shifter products
- Plot shows reduction of GGUS Team tickets per month after Run I in part due to

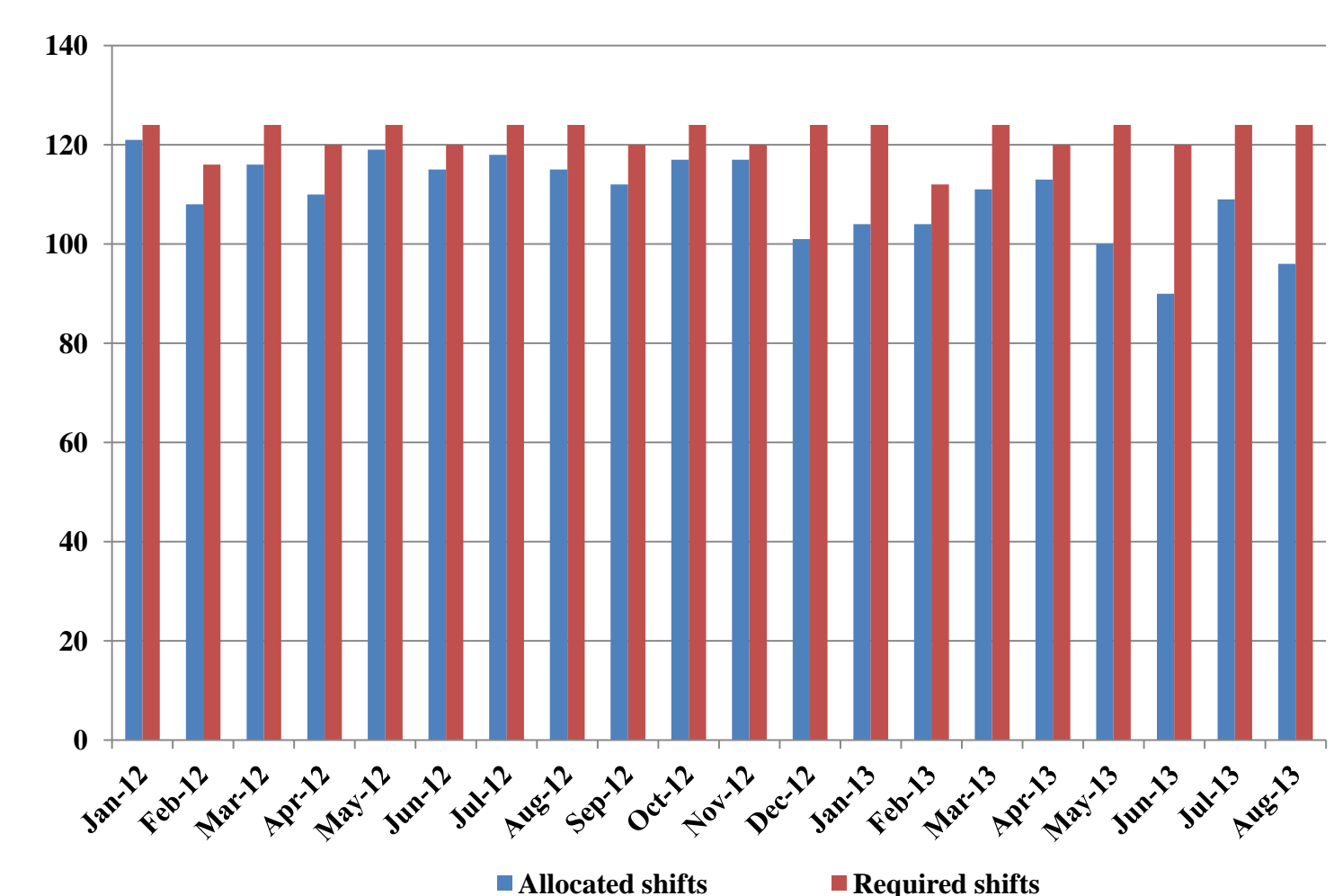
Better Tools!

Monitoring

- ATLAS Grid Information System (AGIS)
- Unified tools for monitoring different resources (SSB)
- File transfer monitoring with friendly UI (DDM2)
- Tasks monitoring
- Panda monitoring
- Bourricot tools

Automatic actions

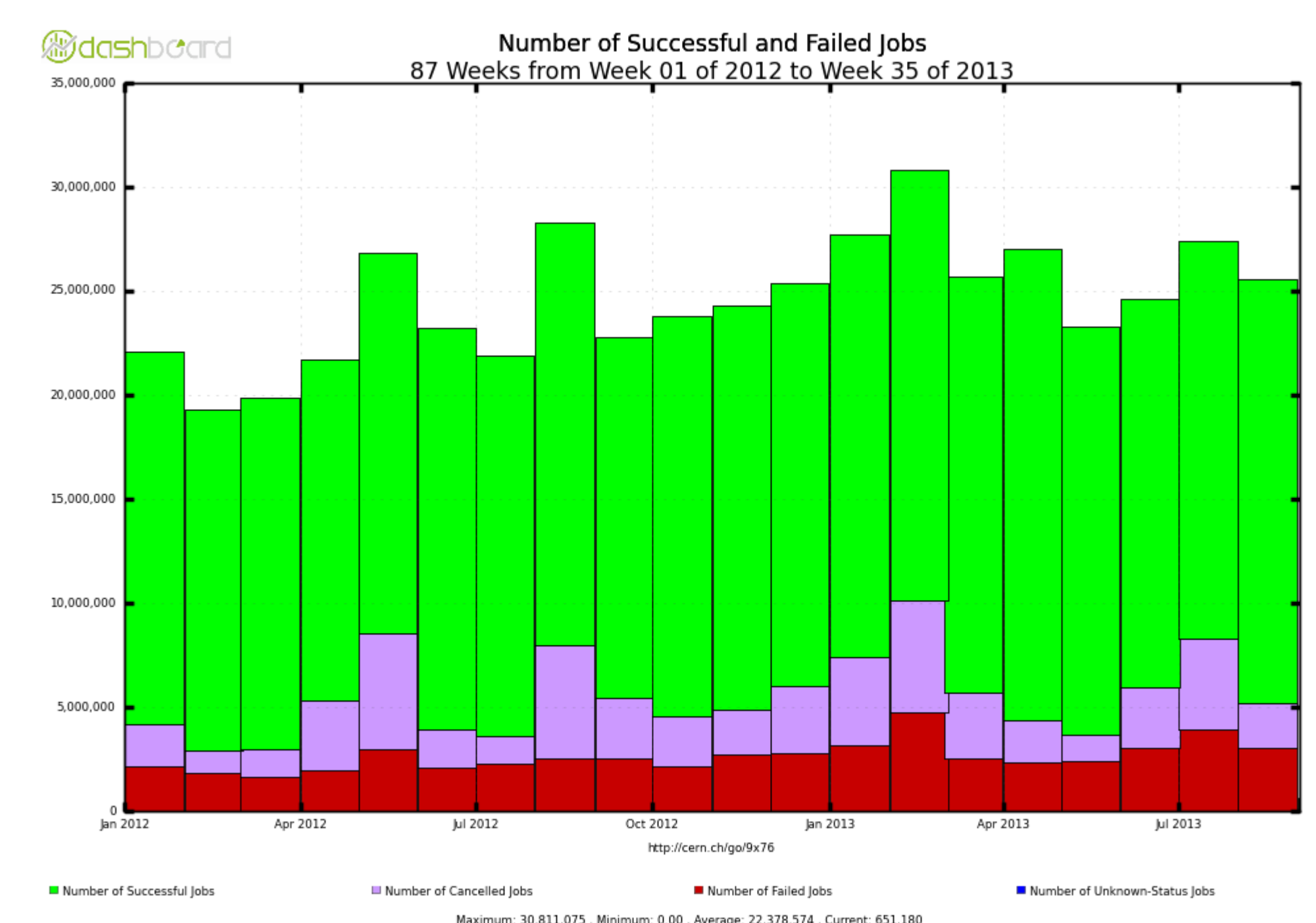
- Manipulation of resources caused by downtime
- Job queue status change depending on results of test jobs
- Resource manipulation depending on results of SAM tests or lack of free space
- + Automatic site notifications



Extra trainee motivation
+
Fast training
+
Revised instructions

Good shift coverage =

Conclusion



ATLAS Distributed Computing Operation Shift teams meet new challenges and keep providing high quality service!