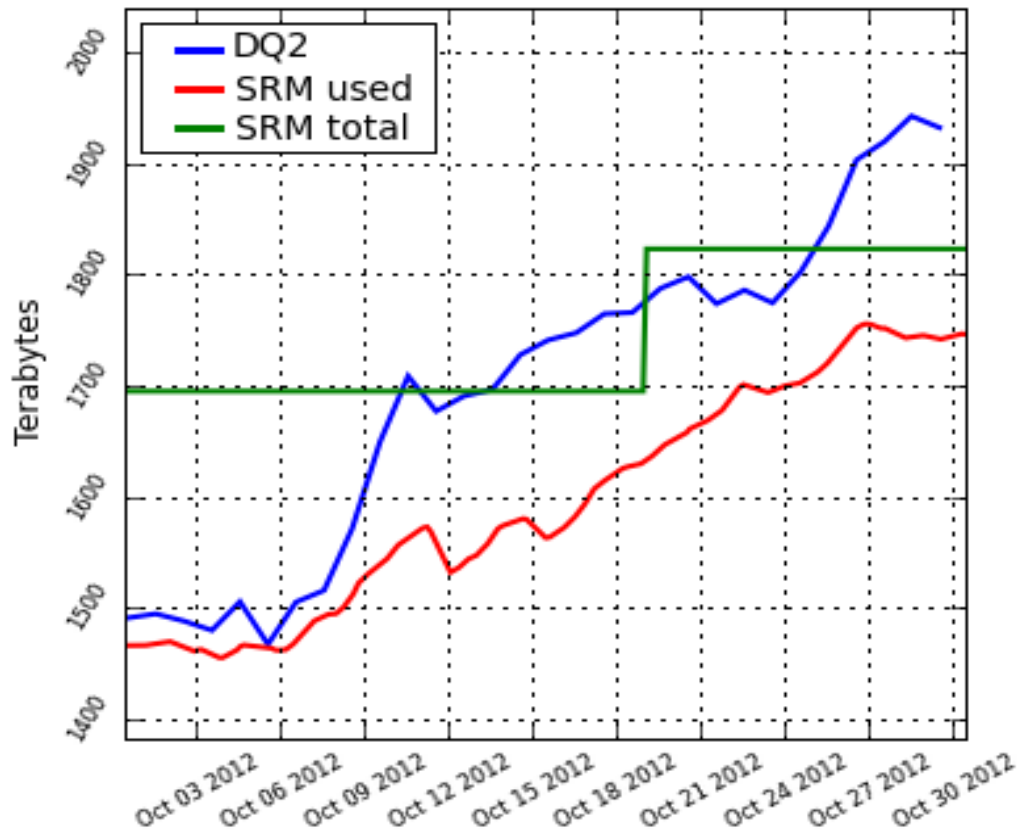


Current status

Location		DATADISK	Location		DATADISK	Location		DATADISK
BNL-OSG2	Used	5400	INFN-T1	Used	1746	RAL-LCG2	Used	2931
	Free	208		Free	77		Free	319
	Total	5608		Total	1823		Total	3250
CERN-PROD	Used	2204	NDGF-T1	Used	1661	SARA-MATRIX	Used	1730
	Free	196		Free	219		Free	73
	Total	2400		Total	1880		Total	1803
FZK-LCG2	Used	2617	NIKHEF-ELPROD	Used	490	TAIWAN-LCG2	Used	1235
	Free	123		Free	106		Free	66
	Total	2740		Total	597		Total	1301
IN2P3-CC	Used	3252	PIC	Used	1120	TRIUMF-LCG2	Used	2009
	Free	385		Free	100		Free	286
	Total	3637		Total	1220		Total	2295

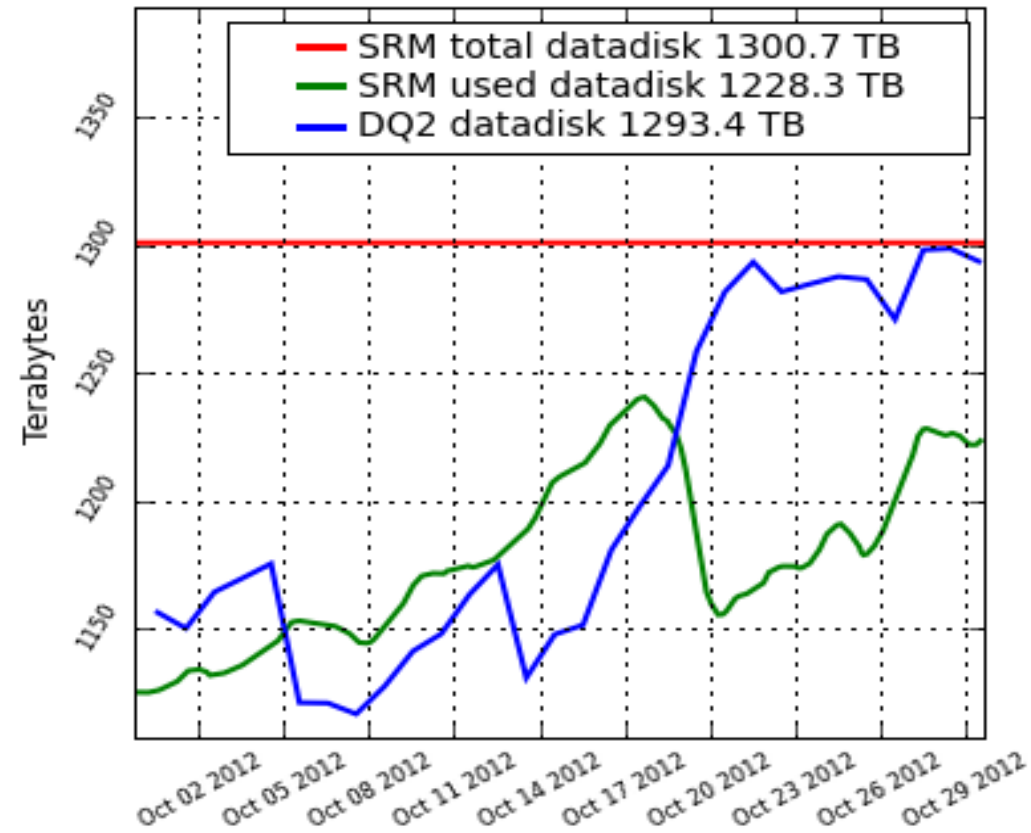
Bourricot graphs

Used disk space for INFN-T1_DATADISK



- 196 TB overlapping datasets

Used disk space for TAIWAN-LCG2_DATADISK



- 76.5 TB

Mitigation steps

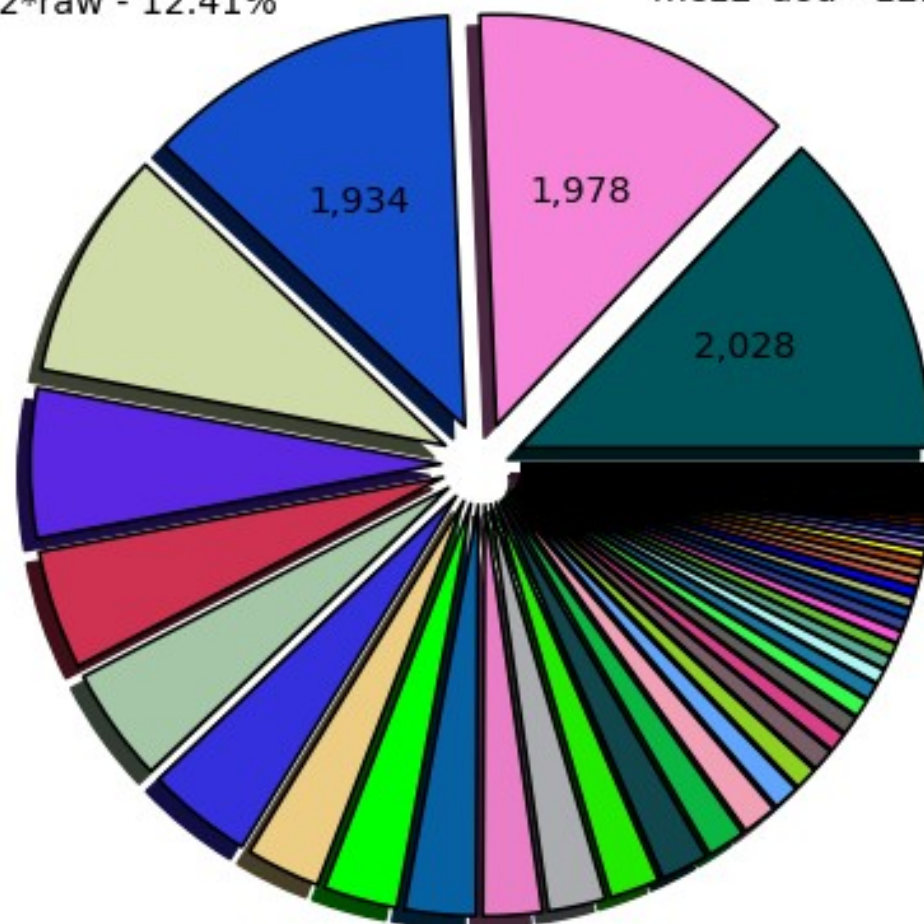
- TAIWAN will add 50 TB to DATADISK
- INFN-T1 and TAIWAN out of T1-T1 replication
- INFN-T1 out of T0 export
- Today we will start deleting group datasets from T1 DATADISKS
 - This was agreed with groups
 - ~20k datasets, ~200TBs
 - More datasets will be come to this mechanism
- Try to identify unneeded primary replicas of certain datasets
 - Long term step

Number of Physical Bytes (in TBs) (Sum: 15,623)

data12*raw - 12.41%

mc12*aod - 12.70%

data12*esd - 13.02%



data12*esd - 13.02% (2,029)
 data12*aod - 5.88% (917.00)
 mc12*hits - 2.94% (457.00)
 data12*desdm - 2.27% (353.00)
 mc10*aod - 1.40% (218.00)
 data11*desdm - 0.75% (117.00)
 mc09*log - 0.57% (89.00)
 data11*hist - 0.46% (72.00)
 mc12*rdo - 0.35% (54.00)
 group*other - 0.29% (45.00)

mc12*aod - 12.70% (1,979)
 data12*desd - 4.70% (732.00)
 data10*ntup - 2.93% (456.00)
 valid1*esd - 1.98% (308.00)
 mc11*rdo - 1.04% (162.00)
 data10*desdm - 0.73% (114.00)
 data11*ntup - 0.51% (80.00)
 mc12*log - 0.41% (63.00)
 valid1*aod - 0.35% (54.00)
 mc10*ntup - 0.26% (40.00)

data12*raw - 12.41% (1,934)
 mc11*hits - 4.53% (706.00)
 mc12*evnt - 2.81% (438.00)
 data11*aod - 1.87% (292.00)
 data11*desd - 0.91% (142.00)
 mc12*esd - 0.72% (112.00)
 mc11*esd - 0.50% (78.00)
 mc10*log - 0.40% (62.00)
 valid1*rdo - 0.34% (53.00)
 mc12*desd - 0.22% (34.00)

mc11*aod - 9.03% (1,407)
 data11*esd - 4.17% (650.00)
 mc11*evnt - 2.33% (363.00)
 mc10*hits - 1.51% (236.00)
 mc10*evnt - 0.87% (136.00)
 valid1*hits - 0.66% (103.00)
 mc11*log - 0.47% (73.00)
 data10*esd - 0.39% (61.00)
 data10*hist - 0.31% (48.00)
 ... plus 67 more