

FROM RESEARCH TO INDUSTRY

cea



www.cea.fr

SCCM 2012 SP1



Microsoft®
System Center 2012
Configuration Manager

Hepix Bologna | Joel Surget

16 APRIL 2012

Windows history at IRFU

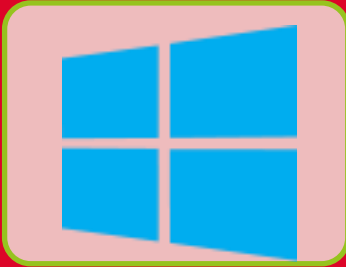
System Center

SCCM at IRFU

SCCM 2012 and SCCM 2012 SP1

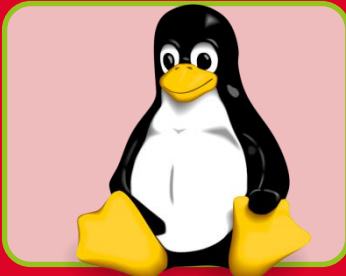
Support of Mac, Linux and Mobiles devices

IRFU AND DSM COMPUTERS



2000 Windows computers

- Centrally managed (SCCM)



300(?) Linux

- OCS Inventory or nothing
- not managed



400(?) Macintosh

- OCS Inventory or nothing
- Not managed

CERN Nice NT



SMS 2003



SCCM 2007



SCCM 2012 last august



SCCM 2012 SP1 in january



- App Controller
 - Configuration Manager
 - Data Protection Manager
 - Endpoint Protection
 - Operations Manager
 - Orchestrator
 - Service Manager
 - Virtual Machine Manager
-
- Integration with Windows Intune for the cloud and as MDM (Mobile Device Management)

- One SCCM server , MSSQL database
- Sccm client on each computer

- Image creation and capture
 - Image with standards products (Office, Reader...)
 - No drivers
 - Windows XP (32/64bits), Windows 7 (32/64bits)
 - Windows 8 (32/64bits) in test

- Drivers management
 - Drivers database and plug and play detection
 - “Dell Client Integration pack” to integrate all Dell computers drivers
 - “HP Softpaq Download Manager” for HP Drivers (not tested/used)

- Microsoft and Adobe update
 - Use WSUS but with SCCM interface and messages
 - Use SCUP (System Center Update Publisher) to include
 - Adobe Reader and Acrobat update (version 10 and 11)
 - Adobe Flash update (version 11)
 - Dell, HP (and Fujitsu?) Drivers and Bios update (not used)

- Products Installation (MsProject, Adobe Acrobat, OpenText Exceed...)
- Products update (Java 7, Office 2013...)
- OS deployment (pxe and winpe) and task sequences
 - Using drivers, update, applications...
 - Wmi, variables, registry ... conditions
- Hardware inventory (hardware + products...) from Windows registry and WMI
 - You decide what you want
 - You can add many things
- Collections (direct, dynamic using inventory)
- Query and Reporting

- Released in april 2012 and installed in August
 - Side by side (no update!)

- User centered
- New admin interface
- New reportings (based on SQL Reporting Services)
- New client interface and messages
- Antivirus (Endpoint Protection) integration (tested but not installed yet)
- Different Client Settings
 - one for servers
 - one of pcs
 - one for test (with antivirus for ex)
- New Security roles/users
- Connector between SCCM and MsExchange to Inventory and configure all ActiveSync enabled devices (Iphone/ipad, Windows phone, Android, Windows RT...)

- Released in mi-January 2013 and installed the same day...
- Support for Windows 8 clients
 - Installation, update....
 - New .appx applications
 - Enterprise Appstore
 - UEFI (32/64bits) supports (network installation of Tablets)
- Support on Windows server 2012
- Support for Mac, Linux and UNIX servers
- Integration with Windows Intune to manage also Windows 8 RT, Windows phone 8, IOS (Ipad, Iphone) and Android

Fonctionnalités SCCM + Intune

Fonctionnalité	Windows 8,7,Vista, XP	Windows Embedded	Windows To Go	Mac OS	Windows RT	IOS	Windows phone 8	Android
Application management	Yes	Yes	Yes	Yes	Yes	Yes	Yes	Yes
Endpoint Protection	Yes	Yes	Yes	Yes	No	No	No	No
Hardware Inventory	Yes	Yes	Yes	Yes	Yes	Yes	Yes	Yes
Software Inventory	Yes	Yes	Yes	Yes	Yes	Yes	Yes	Yes
Remote Control	Yes	Yes	Yes	No	Yes	No	No	No
Reporting	Yes	Yes	Yes	Yes	Yes	Yes	Yes	Yes
Software Update	Yes	Yes	Yes	No	Yes	Yes	Yes	No
Compliance Settings	Yes	Yes	Yes	Yes	Yes	Yes	Yes	Yes
OS Deployment	Yes	No	Yes	No	No	No	No	No
Out of band management	Yes	No	No	No	No	No	No	No
Power Management	Yes	Yes	Yes	No	No	No	No	No
Software Metering	Yes	Yes	Yes	No	No	No	No	No

TYPE OF APPLICATIONS



Automatically detect information about this application from installation files:

Type:

Windows Installer (*.msi file)

Location:

Windows Installer (*.msi file)

Windows app package (.appx file)

Windows app package (in the Windows Store)

Microsoft Application Virtualization 4

Microsoft Application Virtualization 5

Windows Phone app package (*.xap file)

Windows Phone app package (in the Windows Phone Store)

Windows Mobile Cabinet

App Package for iOS (*.ipa file)

App Package for iOS from App Store

App Package for Android (*.apk file)

App Package for Android on Google Play

Nokia SIS file

Mac OS X

Manually specify



< Previous

Next >

Summary

Cancel

- Mac OS X 10.6 and X 10.7 (snow leopard and lion)
- Network and AD discovery
- Hardware/Software Inventory
- Settings management
- Application deployment
- System Center Endpoint Protection for the Mac (antivirus)

- Installation
 - Enrollment Point role on SCCM server
 - Microsoft PKI and certificate on every mac
 - Manual installation

- RHEL Version 4 , 5 and 6
 - Solaris Version 9 ,10 and 11
 - Suse SLES version 9, 10 and 11
 - Hardware Inventory
 - Software Inventory
 - Software Distribution
-
- Installation
 - Enrollment Point role on SCCM server
 - certificate and pki
 - Manual installation

- Mac and Linux clients
 - Difficult to test and install (pki...)
 - Inventory is not perfect
 - SP2 ?

- Mobile devices (Iphone, Ipad, Windows 8 RT, Android and Windows phone)
 - Exchange connector : light inventory and default settings
 - With Windows Intune : full inventory and manage applications

- Tablets Windows 8
If dock station or NIC cable : like a laptop

MMS2013
MICROSOFT MANAGEMENT SUMMIT

4.8-4.12

MANDALAY BAY, LAS VEGAS