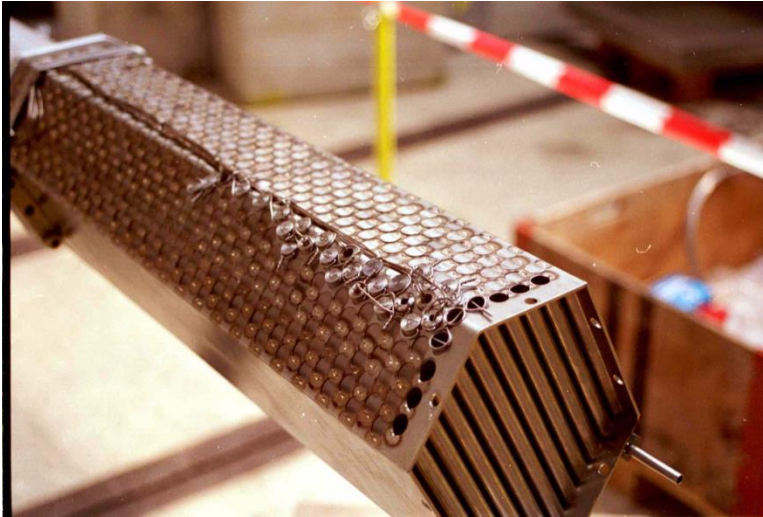
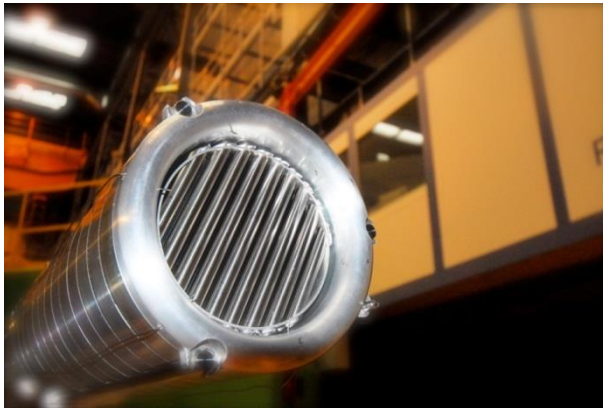
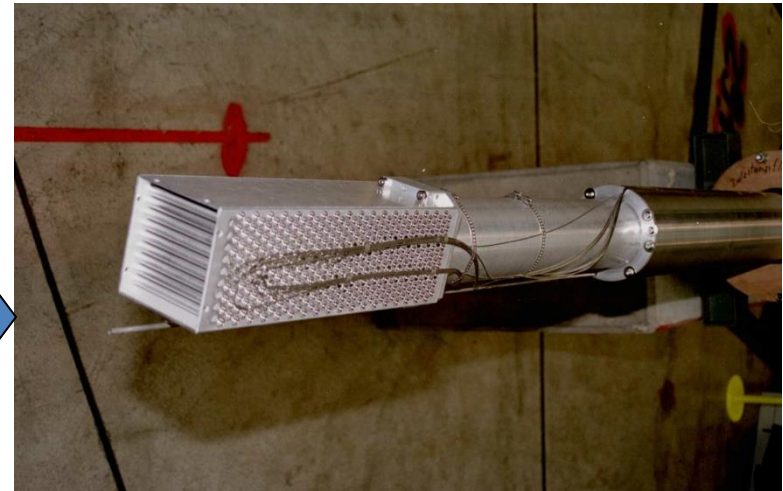


Target Evolution at SINQ

1997-1999: Target Mark I
Water-cooled Zircaloy rods



2000 - 2003: Target Mark II:
Lead rods, steel clad
42% increase in neutron yield

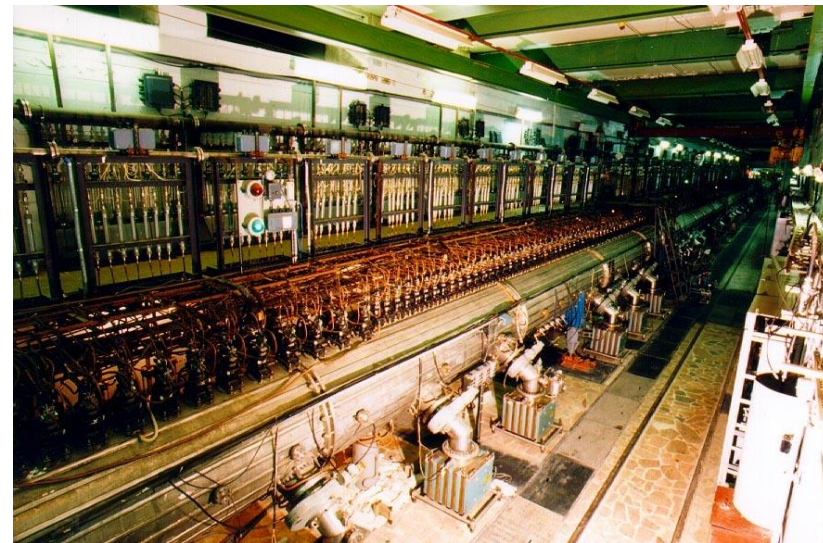


2009 – present: Target Mark IV
Lead rods, with Zr clad, blanket

2004 – 2008: Target Mark III
hybrid Pb SS & Pb Zr-clad

Aug - Dec 2006: **MEGA**watt **P**ilot **E**xperiment:
Joint international initiative to design,
build, licence, operate and explore
a liquid metal spallation target
for 1 MW beam power (**Details next talk**)

Linac



Initial and main parts of linac



Experimental Complex

