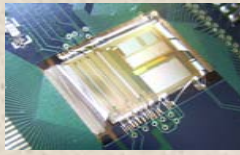


# Initial 2 wafers used for prototypes

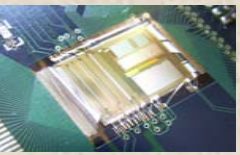


Initial 2 wafers diced

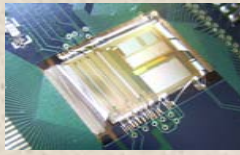
Last Inventory 23/2/2007

VFAT_GEM	Box A (126) Box B (99)	= 225
VFAT	Box C (116) Box D (125)	= 241
CC	Box E (107) Box F (74)	= 181
LVDS	Box G (78) Box H (100)	= 178
FF		= 134

These chips are kept in bld 14, 5<sup>th</sup> floor.  
Used for prototyping so far.



# VFAT2 Production



## 27 July .... 16 wafers sent to Edgetek for dicing

Batch/lot VYG26H00RV containing 6 wafers

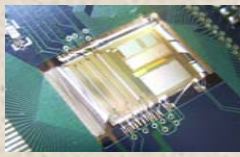
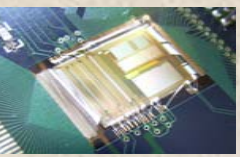
Batch/lot VYG24000RV containing 10 wafers

## 26 September .... Diced pieces back from Edgetek

Die name	Expected	Received
VFAT	1920	1889 (+ 157 bad) = 2046
VFAT_GEM	1920	1881 (+ 147 bad) = 2028
CC	1920	1924 (+129 bad) = 2053
LVDS	1920	1947 (+124 bad) = 2071
FF	2880	2751 (+ 286 bad) = 3037
XX (large)	1920	1806 (+ 198 bad) = 2004
XX (small)	960	895 (+98 bad) = 993
Total 14232 pieces delivered.		

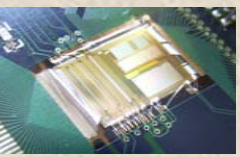
These 16 wafers now in storage.  
LVDS chips gone for packaging

•Totem needs :  
1000 for Silicon,  
700 for GEM &  
500 for CSCs

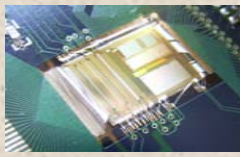


# VFAT production

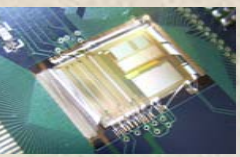
	LOT	Wafer	Initial dicing info		Storage Area Bag No. (good die)
			Good	Rejects	
1	43E7726	AOFT6TX	121	7	D
2	43E7726	AYFTBAX	120	8	D
3	43E7726	A1FTB7X	106	21	D
4	43E7726	A8FTBOX	110	17	D
5	43E7726	A1FT6SX	120	7	D
6	43E7726	ATFTAYX	107	18	D
7	43E7726	A3FTB5X	115	5	E
8	43E7726	AGFT7UX	121	6	E
9	43E7726	AZFTASX	126	9	E
10	43E7726	AUFTAXX	118	10	E
11	43E7726	AOFTB8X	117	10	E
12	43E7726	AGFT5VX	117	9	E
13	43E7726	ADFT5YX	112	15	F
14	43E7726	AOFTARX	124	4	F
15	43E7726	A2FTAPX	128	0	F
16	43E7726	A2FT6RX	117	11	F
		TOTAL	1879	157	



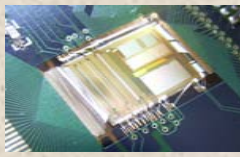
# VFAT GEM production



	LOT	Wafer	Initial dicing info		Storage Area Bag No. (good die)
			Good	Rejects	
1	43E7726	AOFT6TX	115	10	A
2	43E7726	AYFTBAX	123	4	A
3	43E7726	A1FTB7X	115	12	A
4	43E7726	A8FTBOX	111	15	A
5	43E7726	A1FT6SX	118	9	A
6	43E7726	ATFTAYX	117	9	A
7	43E7726	A3FTB5X	125	2	B
8	43E7726	AGFT7UX	121	7	B
9	43E7726	AZFTASX	120	5	B
10	43E7726	AUFTAXX	106	20	B
11	43E7726	AOFTB8X	117	13	B
12	43E7726	AGFT5VX	118	10	B
13	43E7726	ADFT5YX	114	11	C
14	43E7726	AOFTARX	126	0	C
15	43E7726	A2FTAPX	123	4	C
16	43E7726	A2FT6RX	112	16	C
		TOTAL	1881	147	



# Cc production



	LOT	Wafer	Initial dicing info		Storage Area Bag No. (good die)
			Good	Rejects	
1	43E7726	AOFT6TX	121	8	G
2	43E7726	AYFTBAX	121	8	G
3	43E7726	A1FTB7X	114	16	G
4	43E7726	A8FTBOX	121	10	G
5	43E7726	A1FT6SX	121	6	G
6	43E7726	ATFTAYX	120	10	G
7	43E7726	A3FTB5X	126	4	G
8	43E7726	AGFT7UX	126	3	G
9	43E7726	AZFTASX	118	9	G
10	43E7726	AUFTAXX	122	6	G
11	43E7726	AOFTB8X	125	6	G
12	43E7726	AGFT5VX	123	2	G
13	43E7726	ADFT5YX	108	12	H
14	43E7726	AOFTARX	117	12	H
15	43E7726	A2FTAPX	122	6	H
16	43E7726	A2FT6RX	119	11	H
		TOTAL	1924	129	