

GridPP

UK Computing for Particle Physics

UKI-SouthGrid Overview Face-2-Face Meeting

Pete Gronbech
SouthGrid Technical Coordinator
Oxford
June 2013



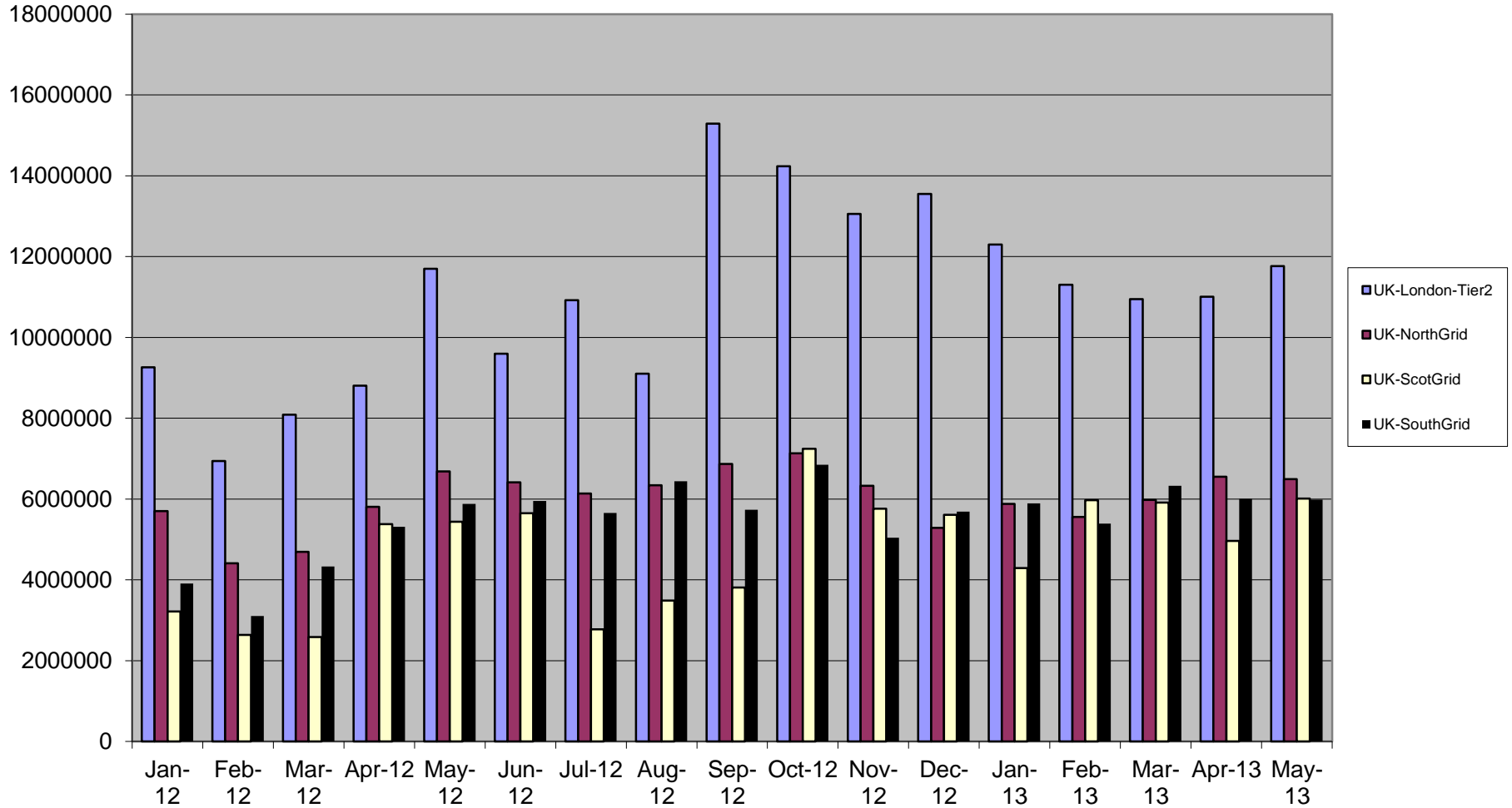
	EFDA JET			Birmingham			Bristol			Cambridge			Oxford			RALPP			Sussex			Overall		
	Q-2	Q-1	Current	Q-2	Q-1	Current	Q-2	Q-1	Current	Q-2	Q-1	Current	Q-2	Q-1	Current	Q-2	Q-1	Current	Q-2	Q-1	Current	Q-2	Q-1	Current
% of promised (by that time) disk available to GridPP	55%	55%	7%	96%	96%	112%	114%	122%	121%	233%	233%	200%	176%	176%	154%	152%	152%	146%	#DIV/0!	#DIV/0!	#DIV/0!	152%	155%	147%
% of promised (by that time) CPU available	1067%	1067%	1049%	186%	186%	190%	136%	136%	139%	335%	335%	210%	350%	350%	349%	262%	262%	261%	#DIV/0!	#DIV/0!	#DIV/0!	276%	276%	272%
Average SAM (SLL page) availability performance over the last quarter	100%	100%	100%	93%	98%	100%	91%	98%	100%	90%	97%	99%	97%	99%	100%	94%	99%	100%		100%	100%	93%	99%	100%
Average SAM (SLL page) reliability performance over the last quarter	100%	100%	100%	93%	98%	100%	91%	98%	100%	92%	97%	99%	97%	99%	100%	94%	99%	100%		100%	100%	93%	99%	100%
Average SLL untargeted ATLAS test performance (UK test)	na	na	na	48%	69%	64%	na	na	na	90%	100%	100%	93%	96%	99%	84%	96%	90%			100%	79%	90%	88%
Approx. CPU utilisation (wall clock time)	21%	21%	18%	85%	71%	102%	47%	47%	56%	78%	66%	96%	91%	85%	90%	64%	76%	62%	0%	2%	21%	68%	70%	70%
Approx. CPU utilisation (CPU time)	20%	20%	17%	79%	66%	94%	42%	35%	43%	71%	60%	82%	83%	78%	82%	56%	61%	53%	0%	2%	21%	61%	60%	62%

All sites except JET providing more than the GridPP MoU. As older kit is decommissioned at our larger sites we should be able to find the 20TB required at JET.

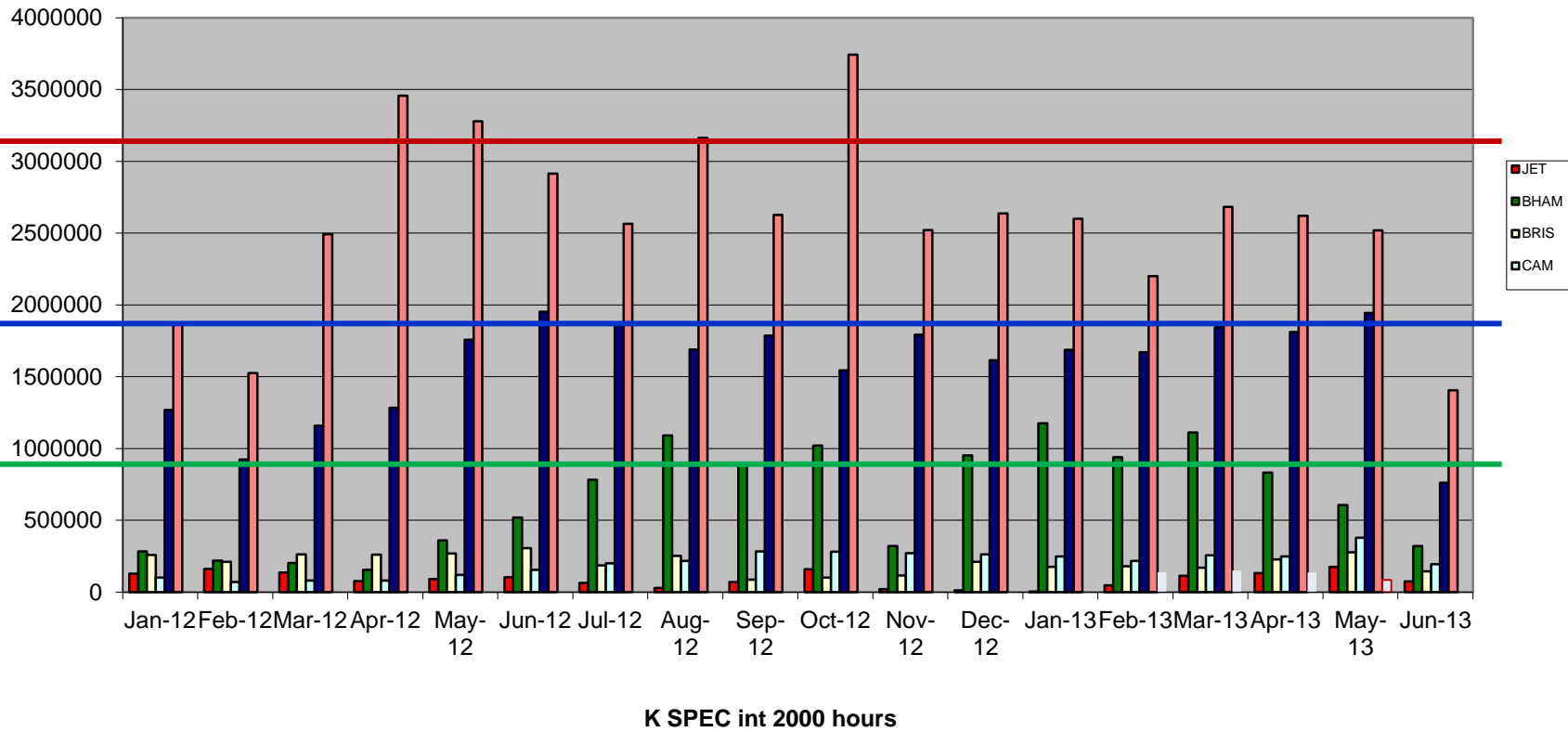
Availability/reliability now up to 100% - Great News.

CPU utilisation has improved, although low at JET and Sussex. Getting JET setup with CVMFS has helped with LHCb jobs. Atlas less willing to invest time at such a small site.



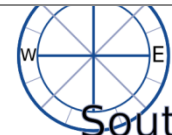
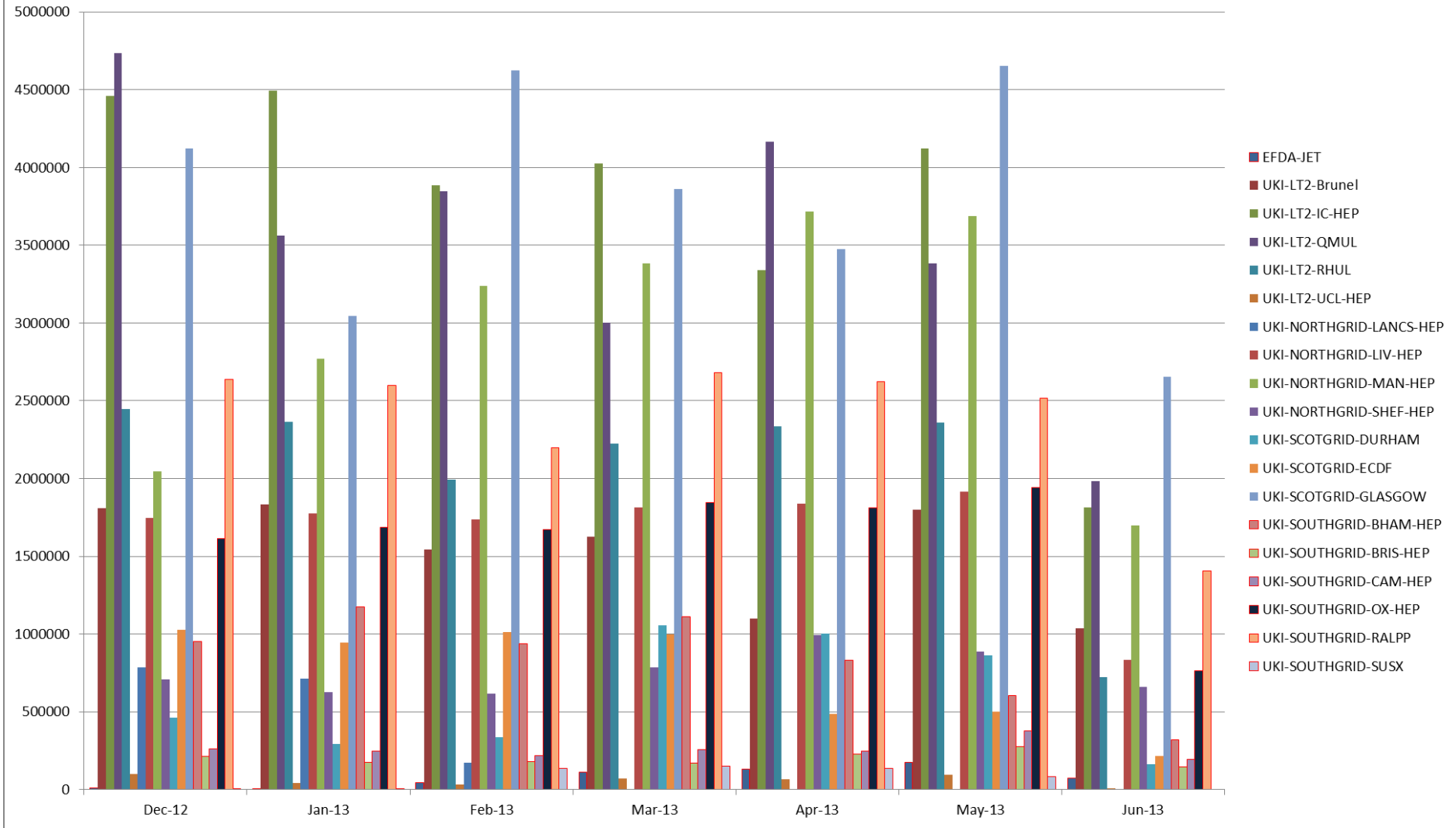


K SPEC int 2000 hours

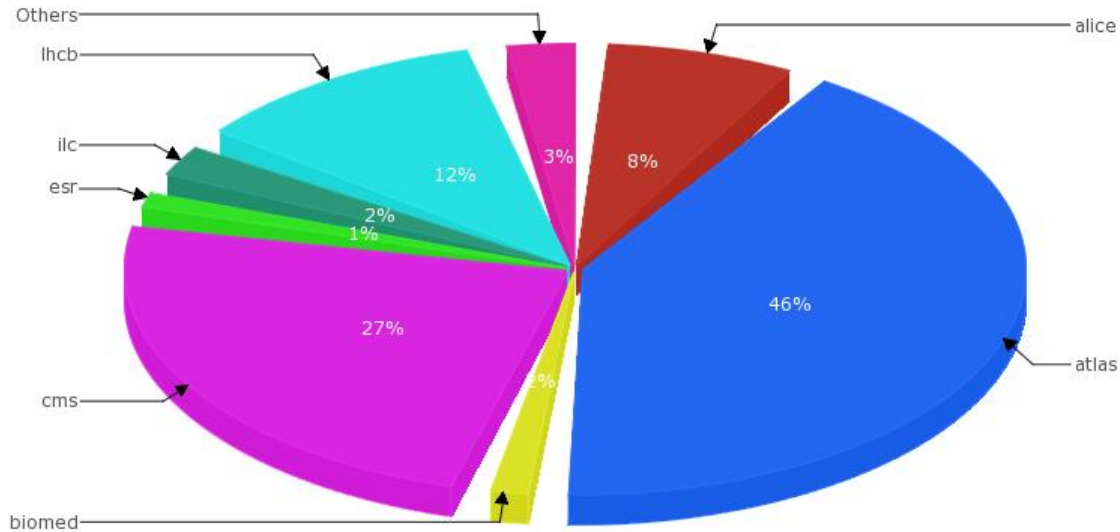




What about the rest of GridPP sites?



UK-SouthGrid Normalised CPU time (kSI2K) per VO



Usage dominated by LHC VOs.

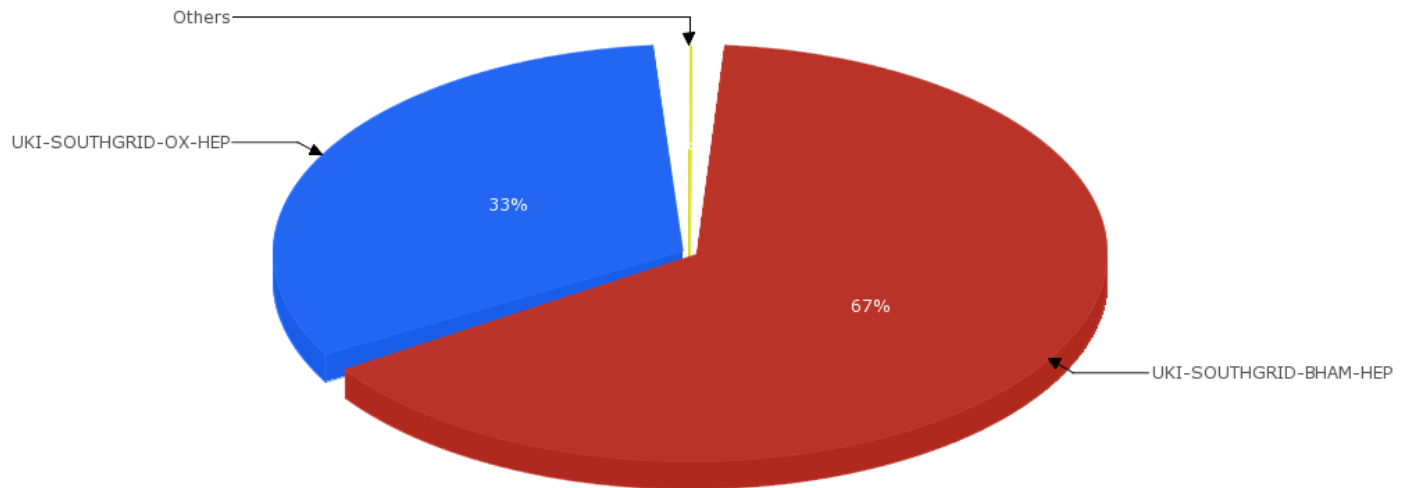
7% Non LHC

- Supported at Birmingham and Oxford
- Jobs done since the last accounting period ended.

Developed by CESSGA 'EGI View': / normcpu / 2011:11-2013:6 / SITE-VO / custom (x) / GRBAR-LIN / I

2013-06-17 15:51

UK Normalised CPU time (kSI2K) per SITE



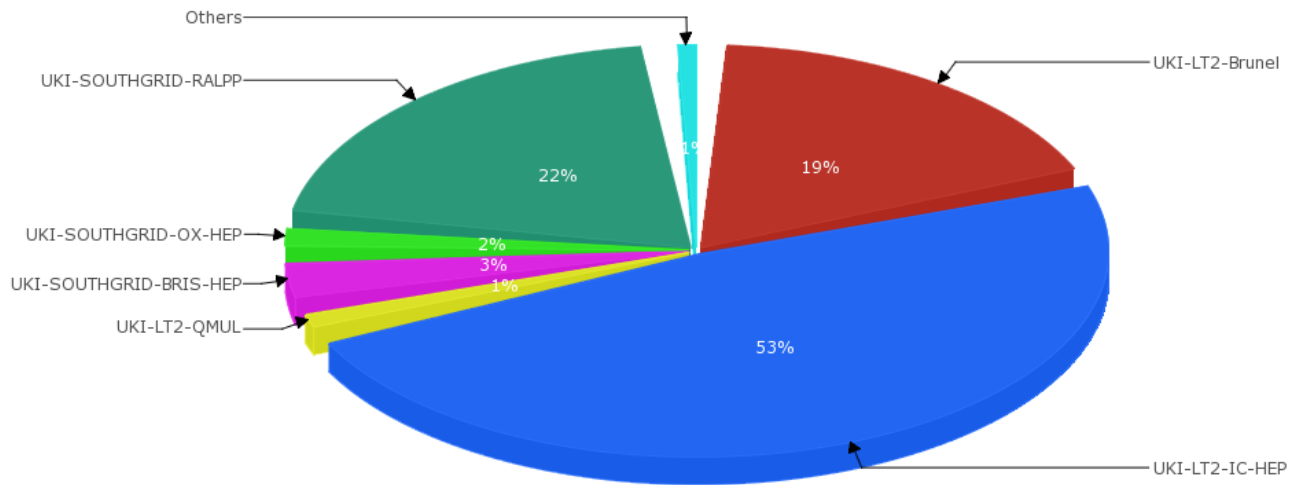


- Bristol is currently a CMS Tier-2
- Oxford is a CMS Tier-3

Developed by CESGA 'EGI View': / normcpu / 2011:11-2013:5 / SITE-DATE / custom (x) / GRBAR-LIN / I

2013-06-17 15:51

UK Normalised CPU time (kSI2K) per SITE

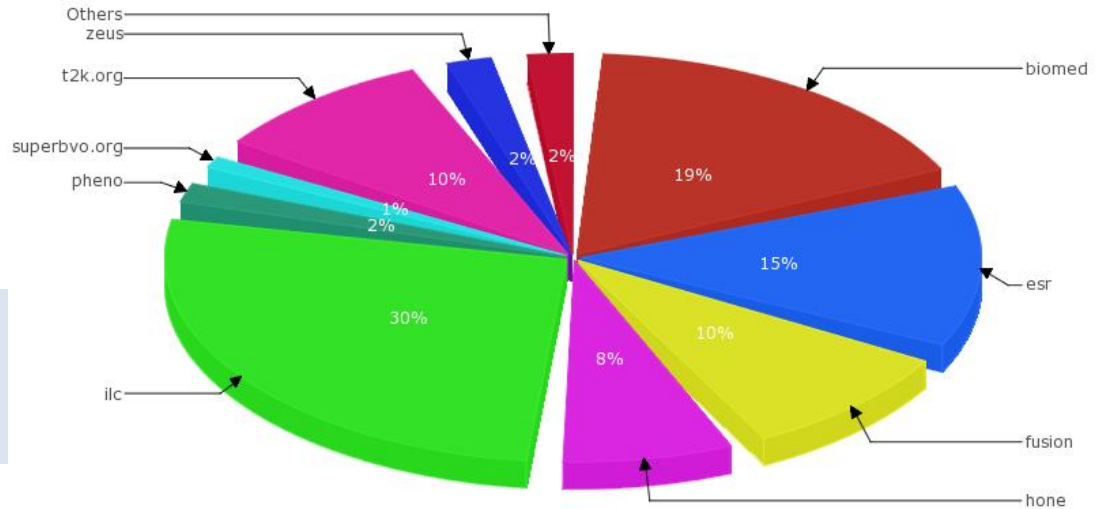




Developed by CESGA 'EGT View': / normcpu / 2012:1-2013:6 / SITE-VO / custom (x) / GRBAR-LIN / I

2013-06-17 15:51

UK-SouthGrid Normalised CPU time (kSI2K) per VO



A wide range of 'Other VOs'

Ilc and t2k increasing, Pheno down

SouthGrid June 2013



- The support of other VOs and in particular local interesting groups can be used as a good ‘impact’ story.
- Are there local groups at your site that would like to make use of some GridPP resources, possible for a short time, with a little support from us?
- The landslides VO at Bristol was a very good story but Michael Wallace has now left.
- In the past we had CAMONT too.
- VoxTox/Accel-RT?
- Neurogrid?

Gridpp4 h/w generated MoU for 2012-14

Q113 Resources

	Total available to GridPP	
Site	HEPSPEC06	Storage (TB)
EFDA JET	1772	1.3
Birmingham	6276	315
Bristol	2247	117
Cambridge	1614	278
Oxford	11770	700
RALPP	25975	1260
Sussex	2500	60
Totals	52154	2731.5

	2012 TB	2013 TB	2014 TB
bham	265	282	346
bris	96	96	116
cam	123	139	167
ox	409	456	549
Jet	19	21	26
RALPPD	830	862	1034
Total	1744	1857	2237
	2012 HS06	2013 HS06	2014 HS06
bham	3375	3305	4184
bris	1651	1619	1982
cam	730	770	949
ox	3287	3372	4173
Jet	166	169	208
RALPPD	10082	9959	12243

Global VO requirements for keep increasing

Year: 2013

Note: Sorting by multiple columns at the same time can be activated by 'shift' clicking on the column headers which they want to add to the sort. Hovering mouse over the column headers to get descriptions of table columns.

All Tiers Tier 0 Tier 1 Tier 2

Search:

Pledge Type	ALICE	ATLAS	CMS	LHCb	SUM
CPU (HEP-SPEC06)	188,000	350,000	350,000	46,000	934,000
Disk (Tbytes)	12,800	49,000	26,000	0	87,800

Year: 2014

Note: Sorting by multiple columns at the same time can be activated by 'shift' clicking on the column headers which they want to add to the sort. Hovering mouse over the column headers to get descriptions of table columns.

All Tiers Tier 0 Tier 1 Tier 2

Search:

Pledge Type	ALICE	ATLAS	CMS	LHCb	SUM
CPU (HEP-SPEC06)	190,000	390,000	390,000	47,000	1,017,000
Disk (Tbytes)	12,800	49,000	27,000	0	88,800

Year: 2015

Note: Sorting by multiple columns at the same time can be activated by 'shift' clicking on the column headers which they want to add to the sort. Hovering mouse over the column headers to get descriptions of table columns.

All Tiers Tier 0 Tier 1 Tier 2

Search:

Pledge Type	ALICE	ATLAS	CMS	LHCb	SUM
CPU (HEP-SPEC06)	200,000	522,000	500,000	47,000	1,269,000
Disk (Tbytes)	16,000	65,000	31,000	0	112,000

Showing 1 to 2 of 2 entries

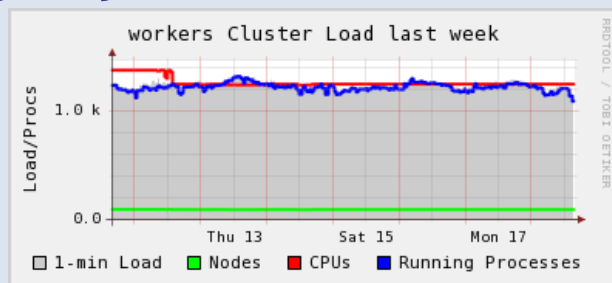
- By 2015 need to replace obsolete and add new h/w to reach:
- Equivalent to up to 150% on CPU
- Equivalent to up to 133% on Disk

- Expected around April 2014; dependent on STFC guidance.
- This will be just in time to purchase storage required at Birmingham and our other sites, as older kit is phased out.
- Check the metrics page to see how you are doing.
- <http://pprc.qmul.ac.uk/~lloyd/gridpp/metrics.html>

- Remarkable few tickets which shows we are running our sites well....I hope.
- Jet - None
- Birmingham - None
- Bristol - None
- Cambridge - None
- Oxford - None
- RALPP - https://ggus.eu/ws/ticket_info.php?ticket=94886
A limited problem

- All sites upgraded from EMI 1 to EMI2
- All sites have CVMFS installed now.
- Overall SouthGrid performing at a comparable level to other Tier 2s
- All sites need to ensure that they are making optimum use of the resources they have. If the cluster is not 100% full it is a problem, there are always plenty of jobs out there.

- Ganglia
- Pbswebmon



- New effort to migrate to SL6 during the summer.
- Renewed request to ensure glexec and argus installed.