

# RALPP Tier 2 Status

Dr Chris Brew

STFC – RAL

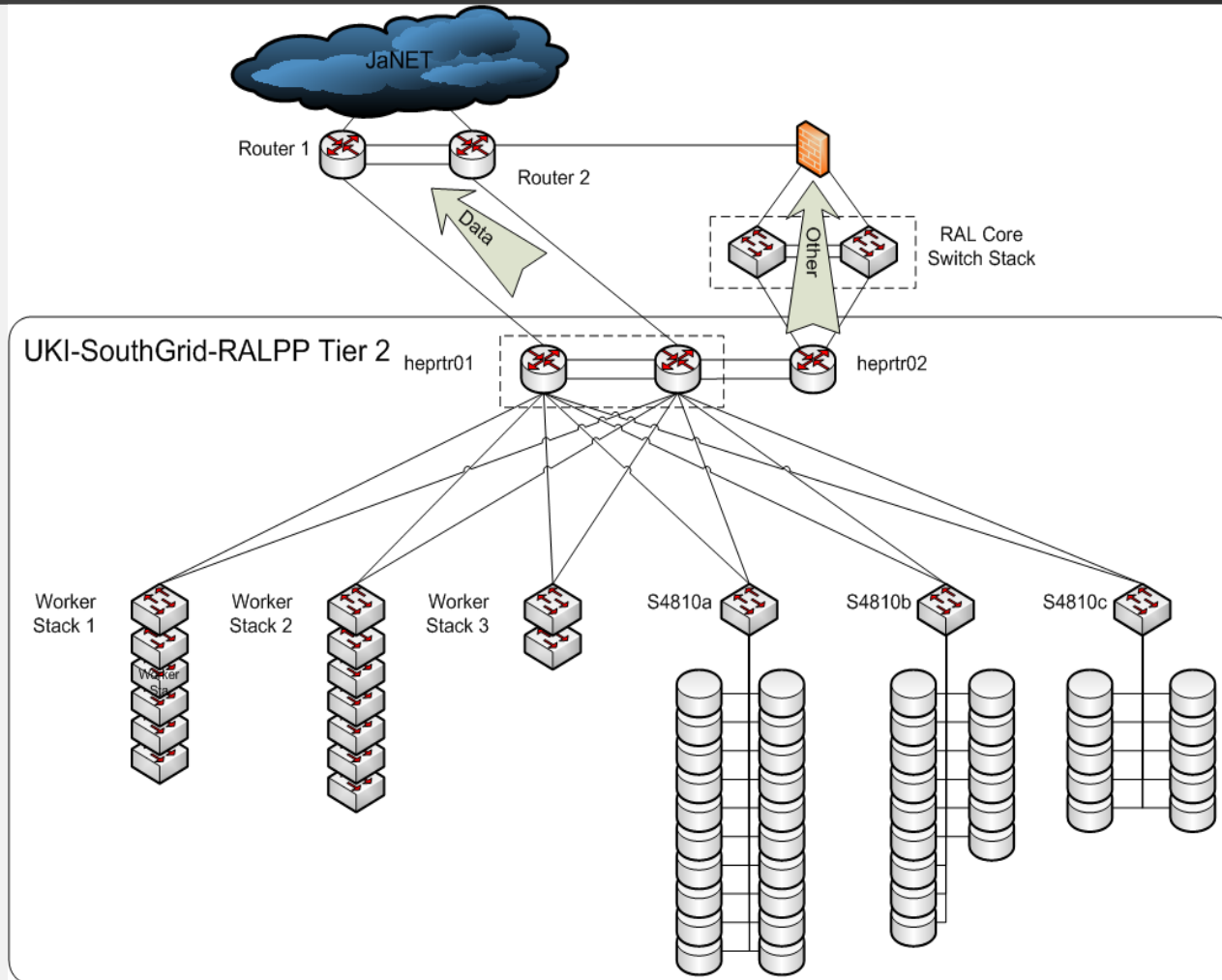
# Recent Changes

- New Kit
  - 3x90TB Disk Servers
  - 4 DB servers for dCache Head Nodes
- New Staff
  - Ian Loader switching from Windows to Linux
- Allocated 100TB disk space to LHCb
- T2K currently have large fairshare to meet deadlines

# Network Upgrade

- 10Gb/s Network Upgrade Nearing Completion
  - 2x10Gb/s backbones internally
  - Still need to double external links to 2x10Gb/s
  - Putting in enough fibre to go to 2x40Gb/s as part of move

# New Network Layout



# Machine Room Move

- Have to vacate our local machine room
  - CPU and Disk will remain in Atlas
- Will move Infrastructure and Local Service Nodes to CICT Machine room down corridor
  - 6 new water cooled racks and our own power feed being installed for us
  - Have Moved 500TB of disk (25 Servers) to Atlas
  - Planning minimal downtime move

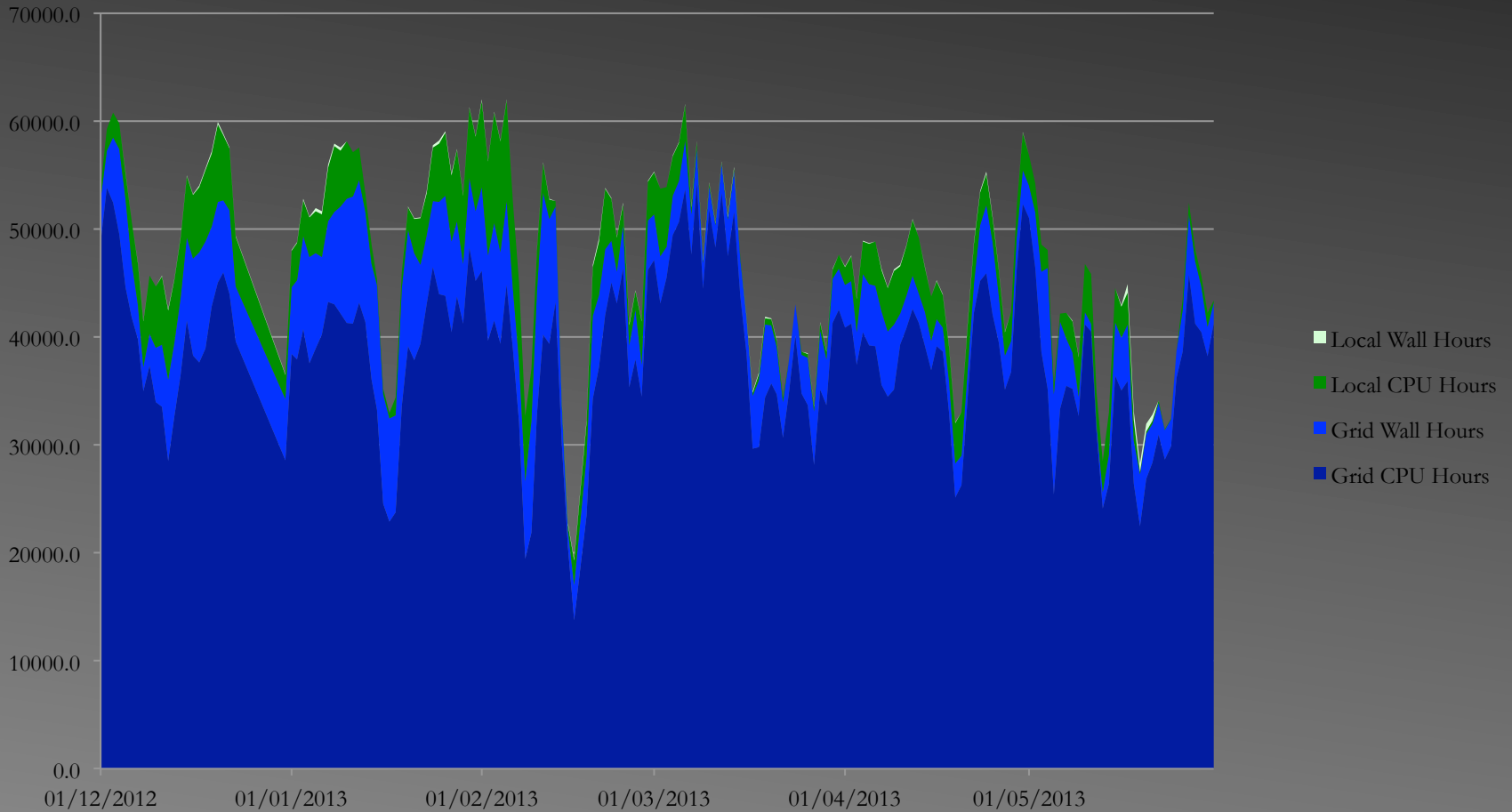
# Recent Stability Issues

- Variety of causes
  - The networks down - it must be Tuesday
  - Argus server slowdowns
    - Seem to have been fixed by allocating more memory
  - Ldap server crashes
    - Spate of crashes in May – Added restarter, no crashes since
  - Batch server issue
    - Overloads and missing stage in files

# RALPP Under Utilization

- 3 Causes
  - Tier 3 Usage ( $\sim 15\%$ )
  - One CE Under reporting to APEL ( $\sim 6\%$ )
  - Offline WNs ( $\sim 5-10\%$ )

# Local/Grid Wall/CPU Hours/Day





# Upcoming Changes

- Service Upgrades
  - SL6 Worker nodes – planning to test new cluster with ARC-CE and HTCondor
  - dCache – update to 2.2, SL6 and PostgreSQL 9.2
    - 4 new head nodes 2 live + 2 standby with live DB mirroring