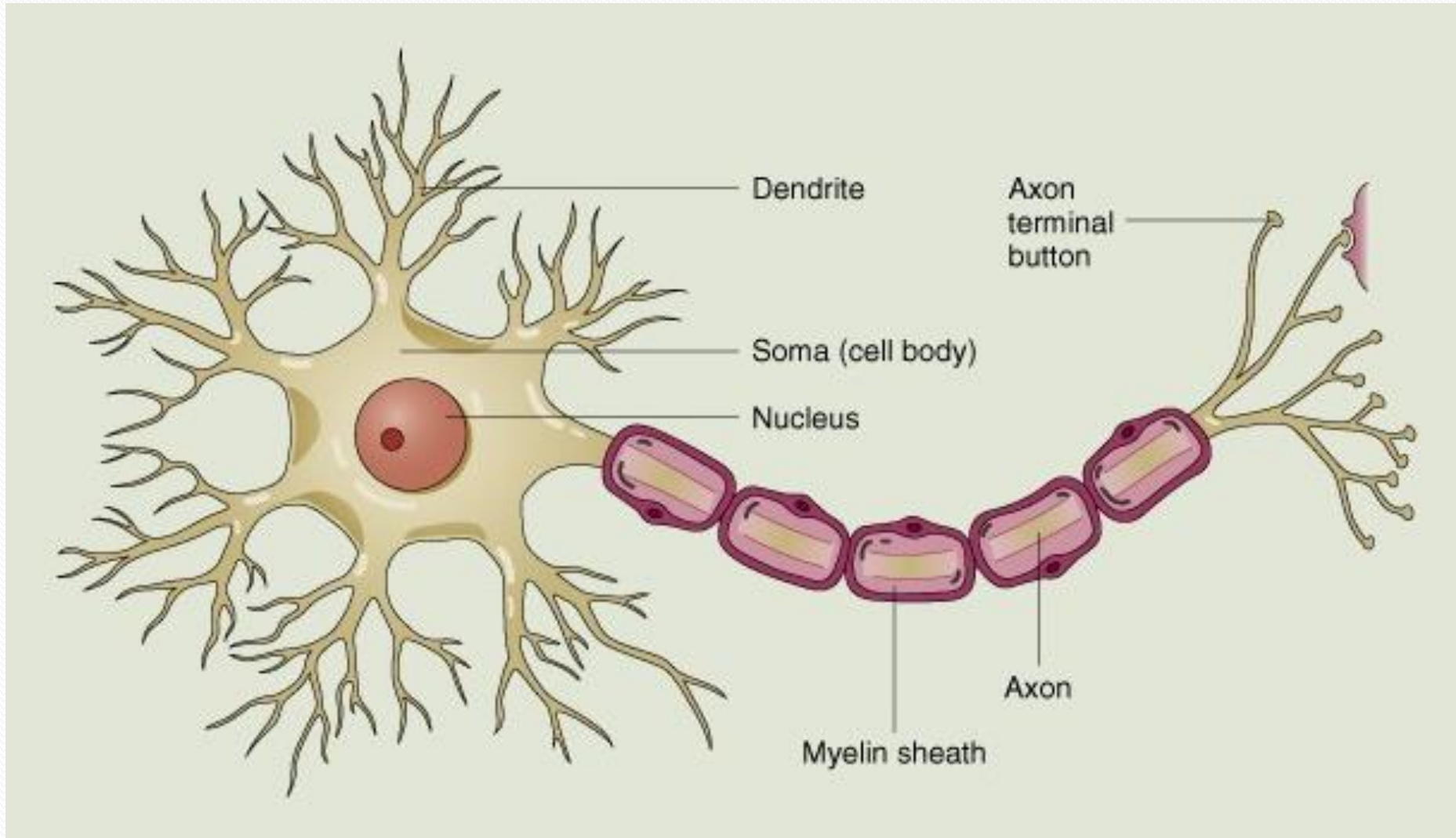


The Brain

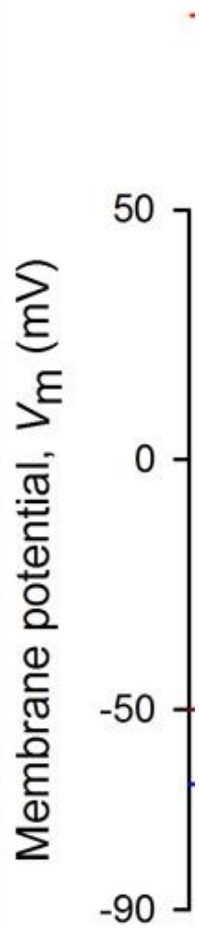


Group D:
Malkesh Agheda
and Belinda Stiles

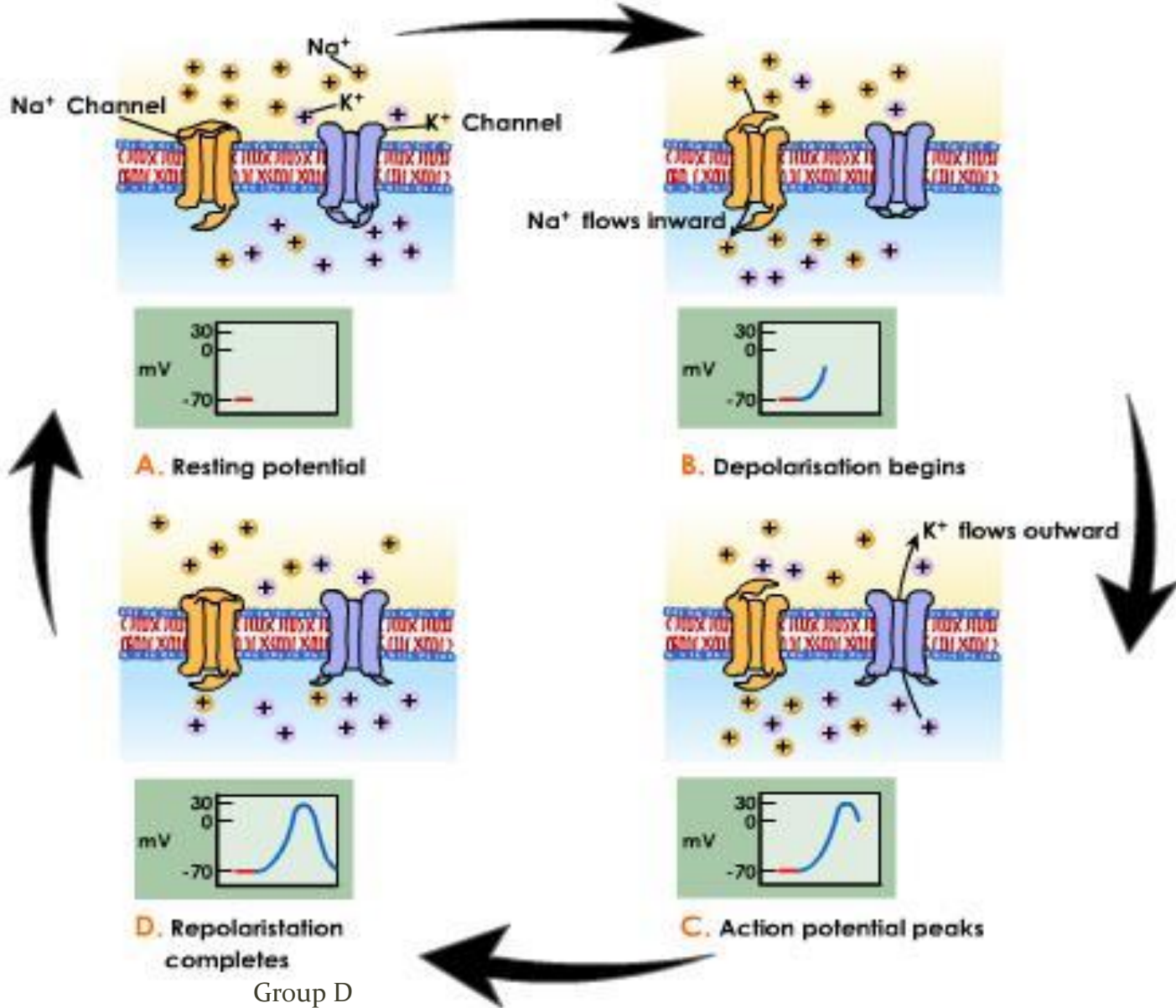
Neuron



Polarization

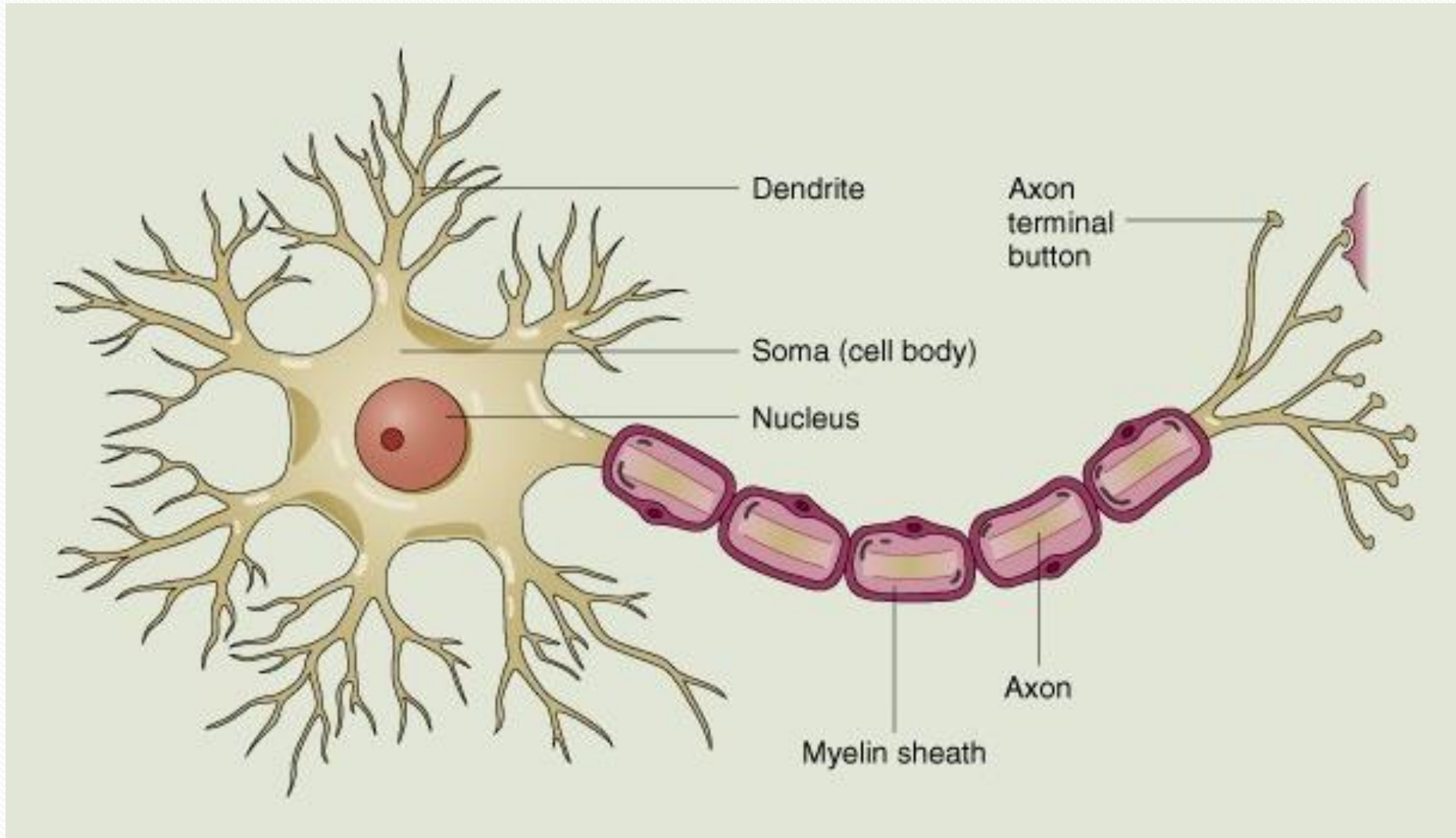


Action Potential



Group D

Neuron

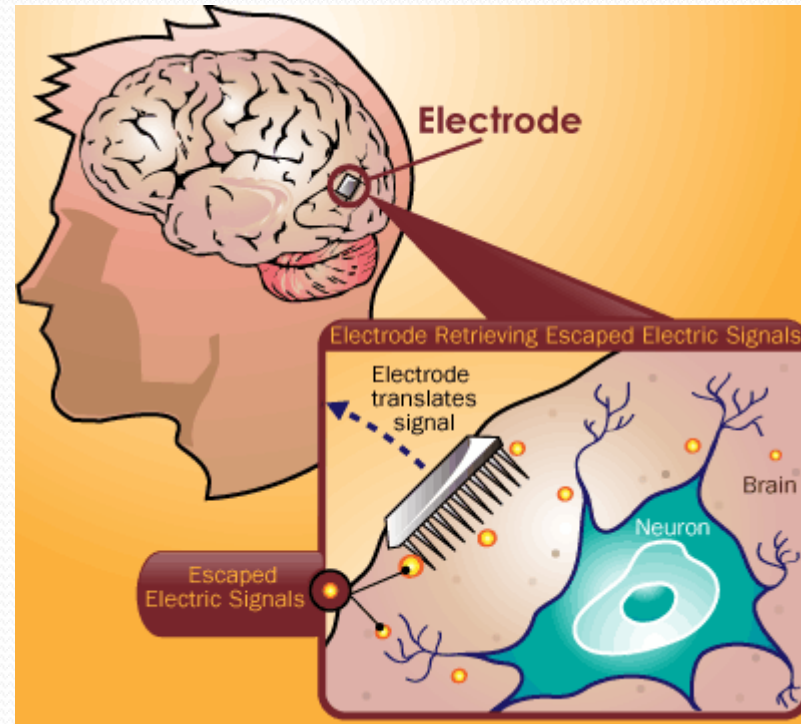
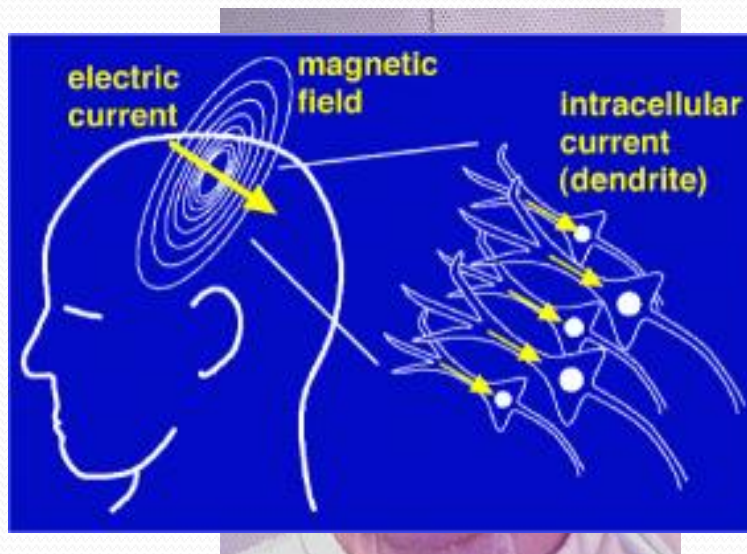


The Brain-Computer Interface

- The ability for the brain to accept controls from a mechanical device
- A direct pathway between a device and the brain.

Signal Acquisition

- ~~Magnetoencephalography (MEG)~~ **Magnetoencephalography (MEG)**

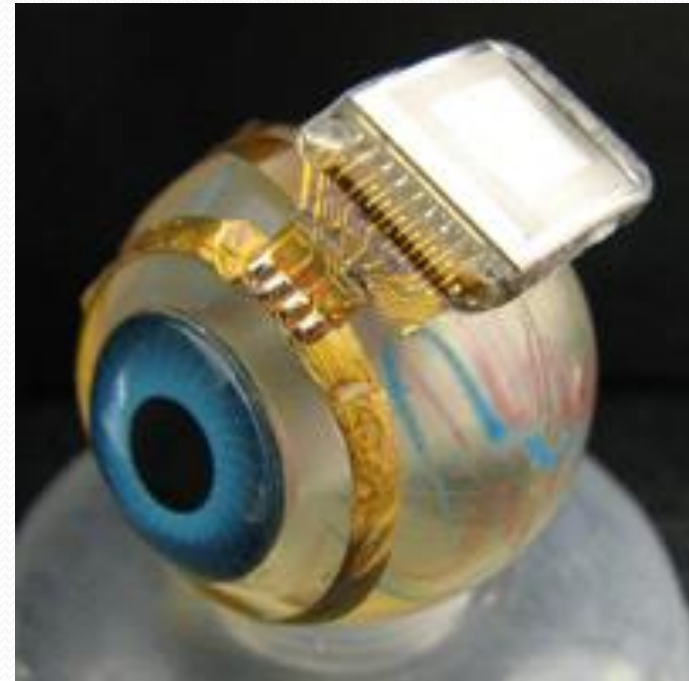
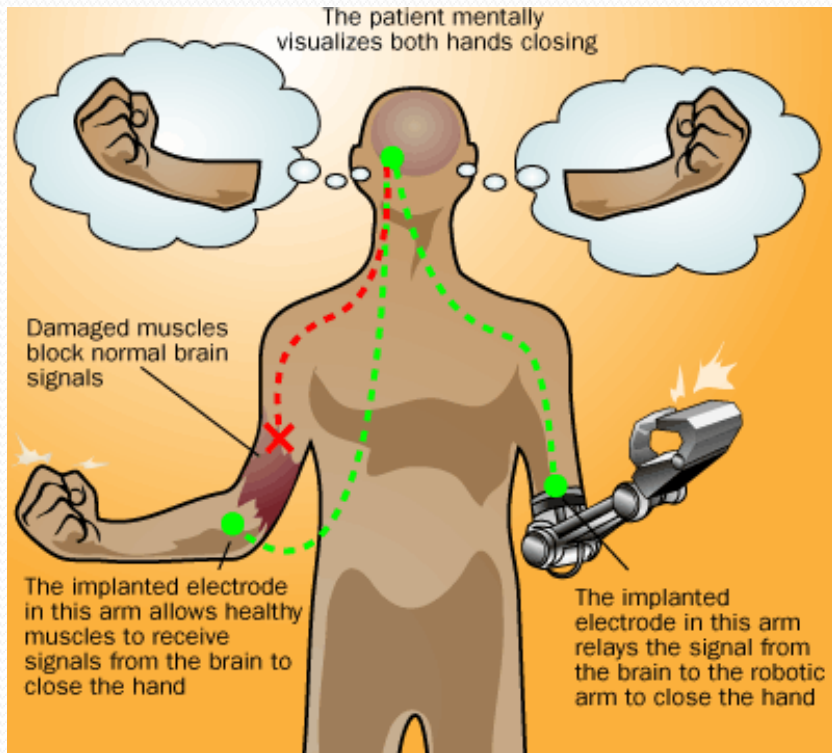


Signal Processing

- Azimo can be controlled using a device that measures brain signals
- The device uses and EEG and an NIRS
- 90% accuracy rate



Replacing Senses



References

- “Biological Psychology, Introduction to behavioural, cognitive and clinical neuroscience” Breedlove, Watson and Rosenweig 2010
- “How BCI’s work”
<http://computer.howstuffworks.com/brain-computer-interface2.htm>
- Okada, Y. (1983): Neurogenesis of evoked magnetic fields. In: Williamson, S.H.; Romani, G.L.; Kaufman, L.; Modena, I., editors. *Biomagnetism: an Interdisciplinary Approach*. New York: Plenum Press, pp 399-408
- “Disruptions: Brain Computer Interfaces Inch Closer to Mainstream”
<http://bits.blogs.nytimes.com/2013/04/28/disruptions-no-words-no-gestures-just-your-brain-as-a-control-pad/>