

Coordinator's report

Statistics 2012

Experiments since last INTC meeting

Building 508

Magdalena Kowalska

Marek Pfützner



Shifts 2012

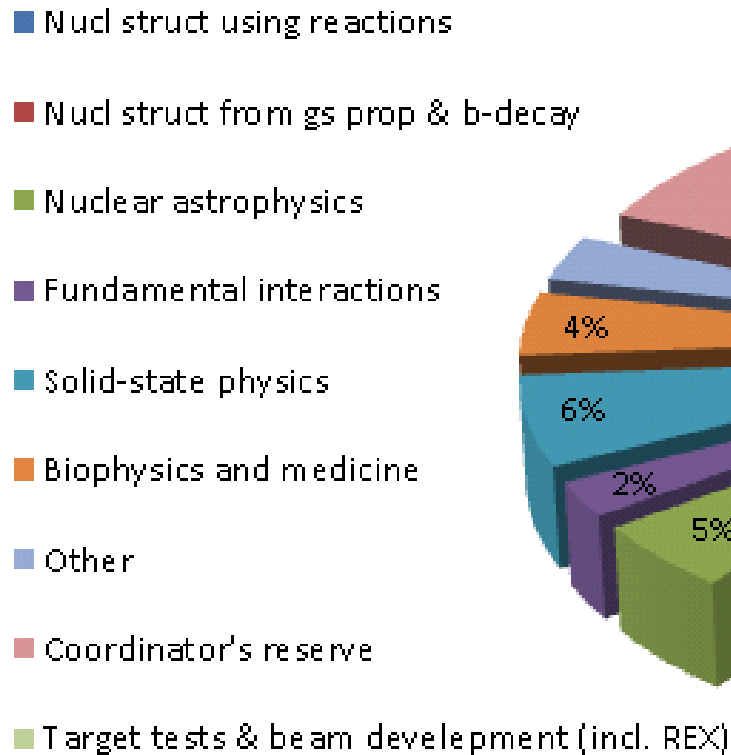
Delivered	2012	2011
Protons	11.5e19	8.05e19
All shifts (IS+LOI+MD)	529	463.5
Shifts for IS exp	416	313.5
Shifts for LOIs	15.5	16
REX shifts (IS +LOI)	221.5	190.5
Average IS shifts/day	1.61	1.55

Physics programme was running until December 17, 2012

Shifts balance

- Low-energy IS experiments (including WITCH): 364.5 shifts
- Post-accelerated REX experiments: 216.5 shifts
- Approved for HIE-ISOLDE (Oct 2012): 429 shifts

Delivered shifts 2012



Physics since last meeting & LS1

- New method and groups - incomplete fusion (cluster-transfer) with T-REX: Milano & Cracow
- TISD: CaO-Helicon (on GPS) to produce C and possibly Ar beams
- The only WITCH run this year
- ^{44}Ti for astrophysics (GPS): ^{44}Ti source from PSI, setup behind REX
- Mn for COLLAPS (Manchester) and some SSP users
- Hg for TAS (1st run since a few years) and priority collections
- ^{11}Be which failed in the summer

LS1 times:

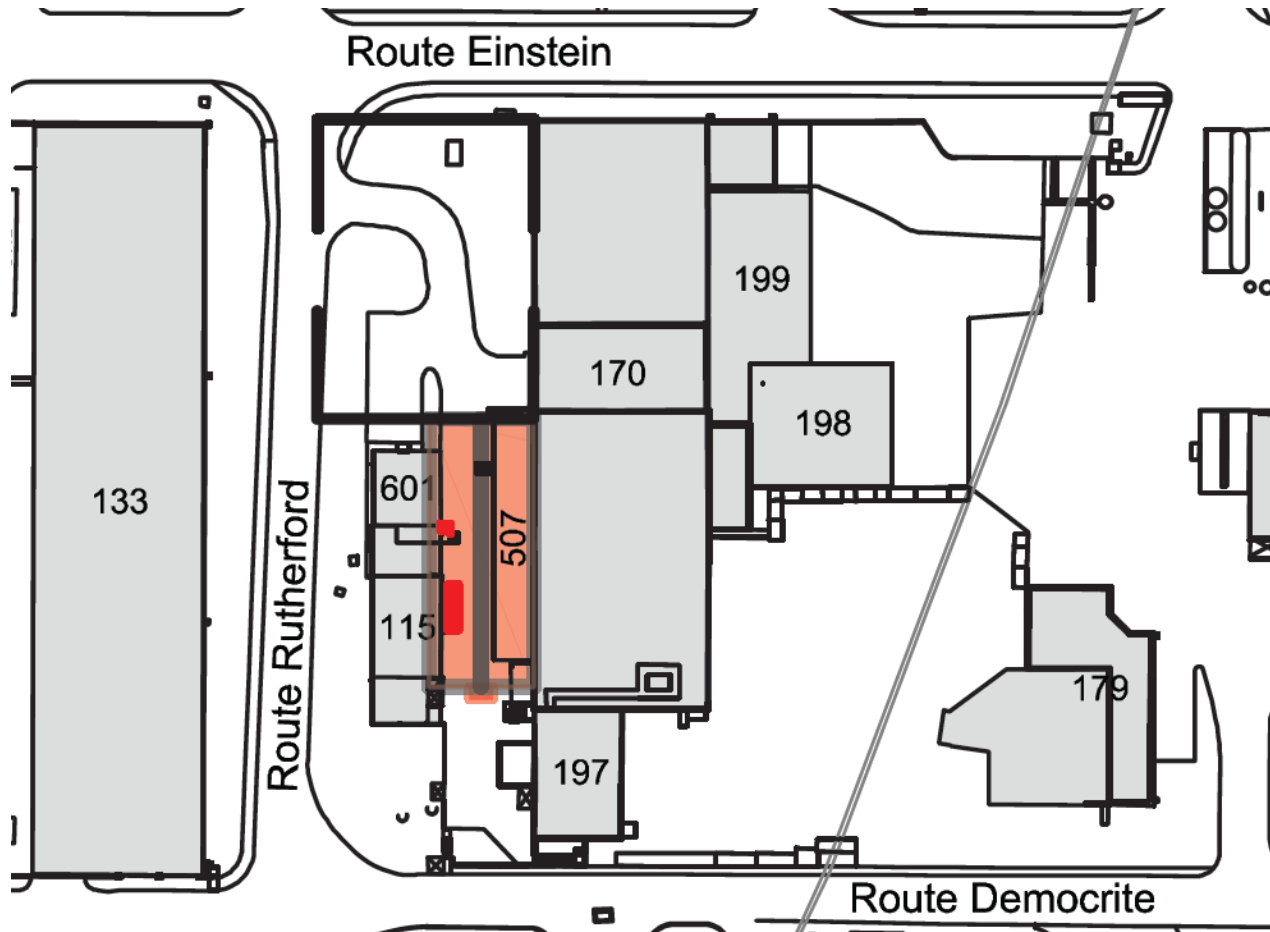
Protons to ISOLDE: June-July, 2014

Protons stop on December 15, 2014

Protons back to ISOLDE – April 2015 (very preliminary)

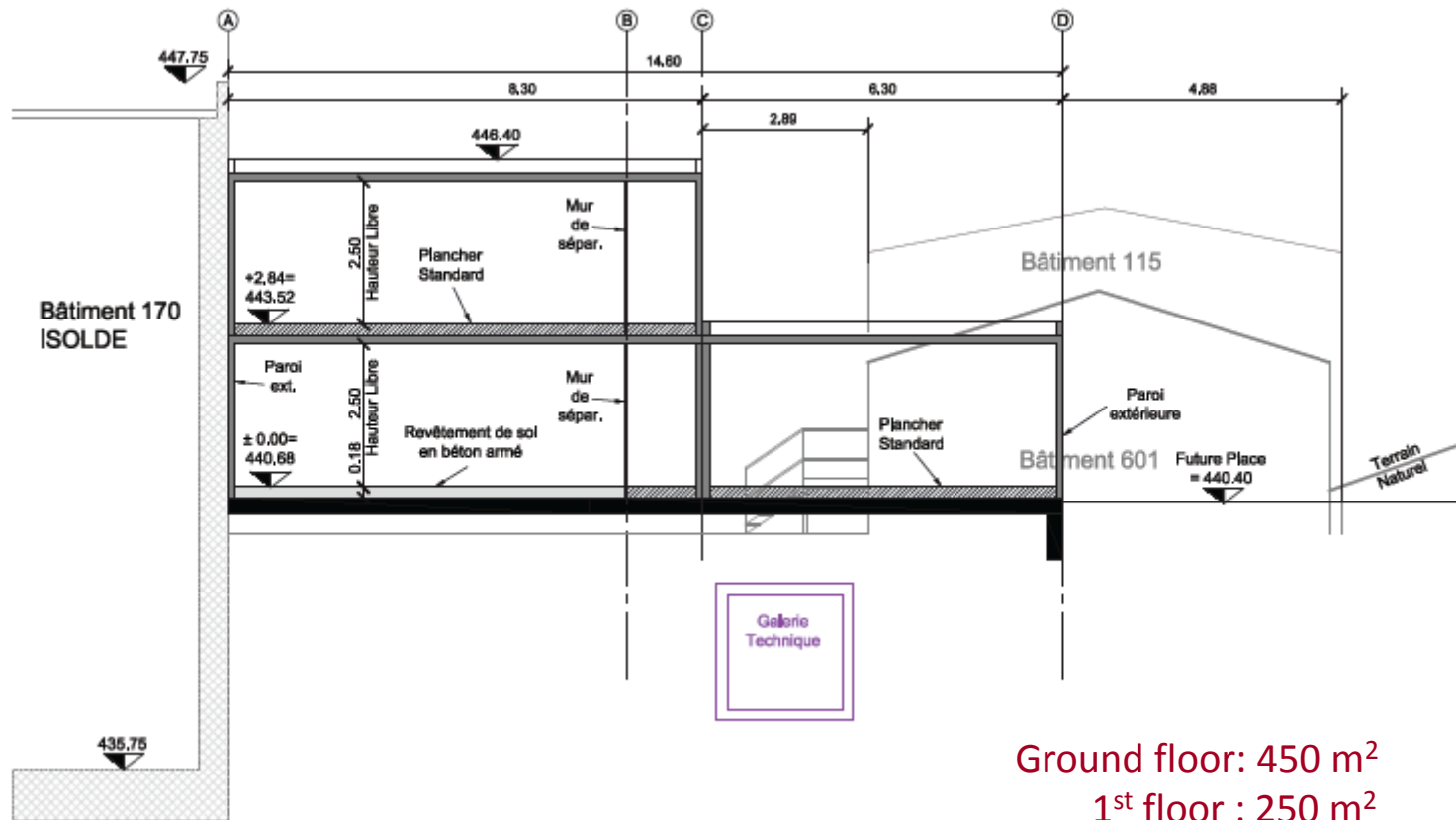
Buildings 115, 507, 601

- Buildings 115, 507, and 601 to be demolished, yielding place for the new building 508 and in the future for the TSR



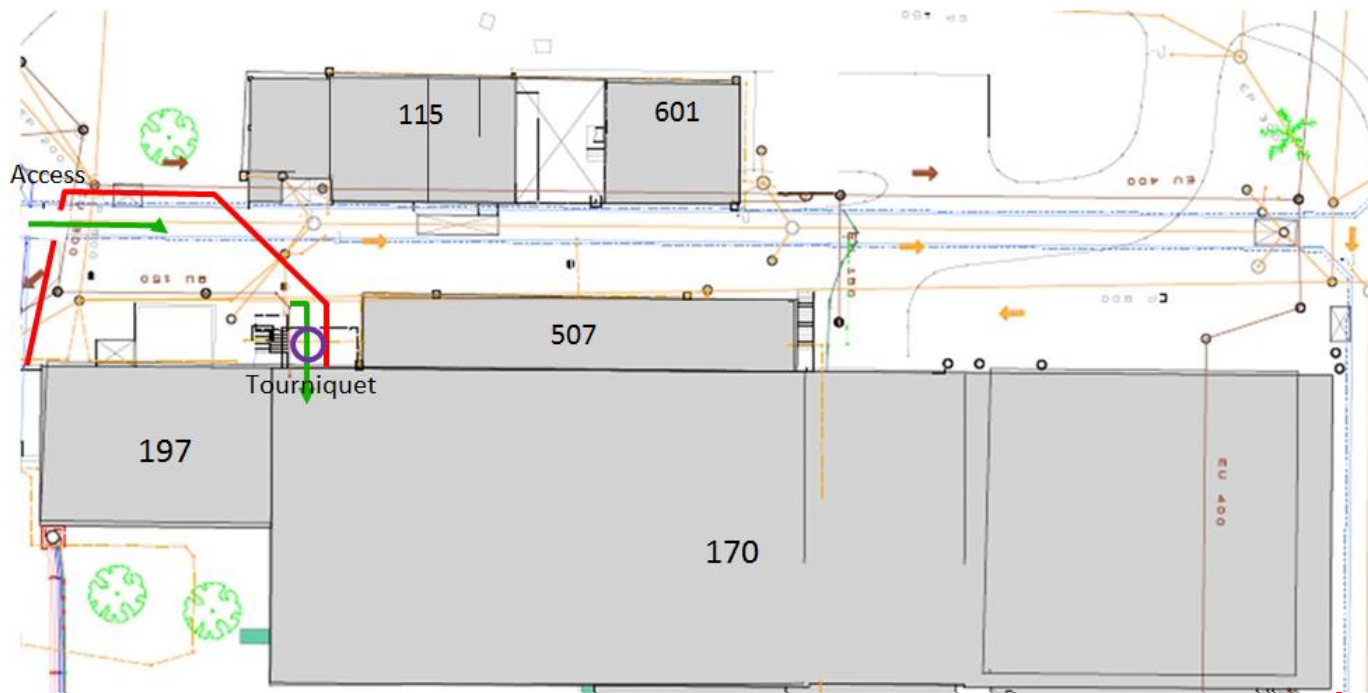
courtesy of Eliseo Perez-Duenas

New building 508



New access from the Jura side

During 508 construction work:



Huge effort of evacuation



courtesy of Erwin Siesling

The work has started

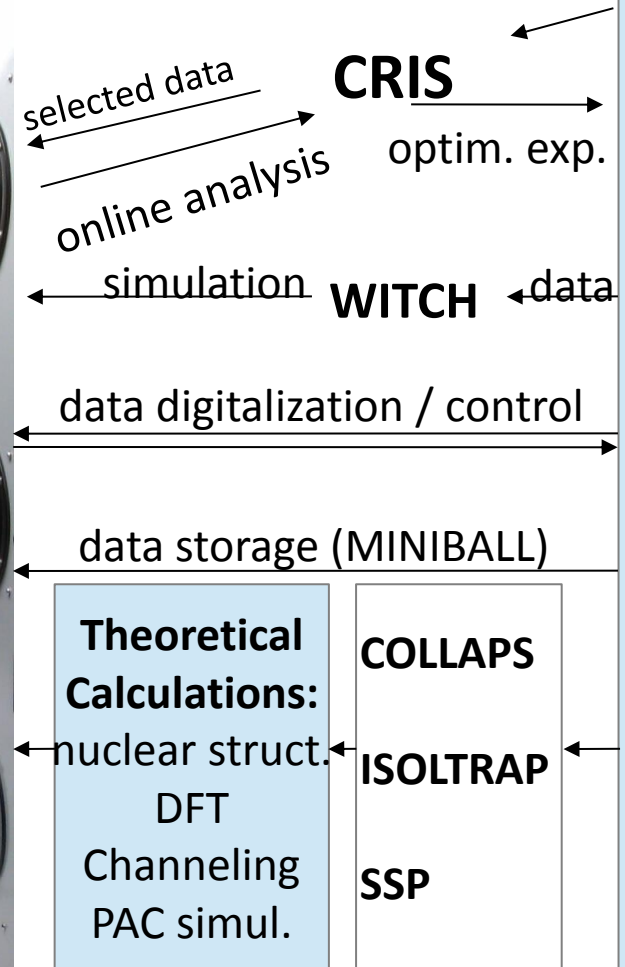
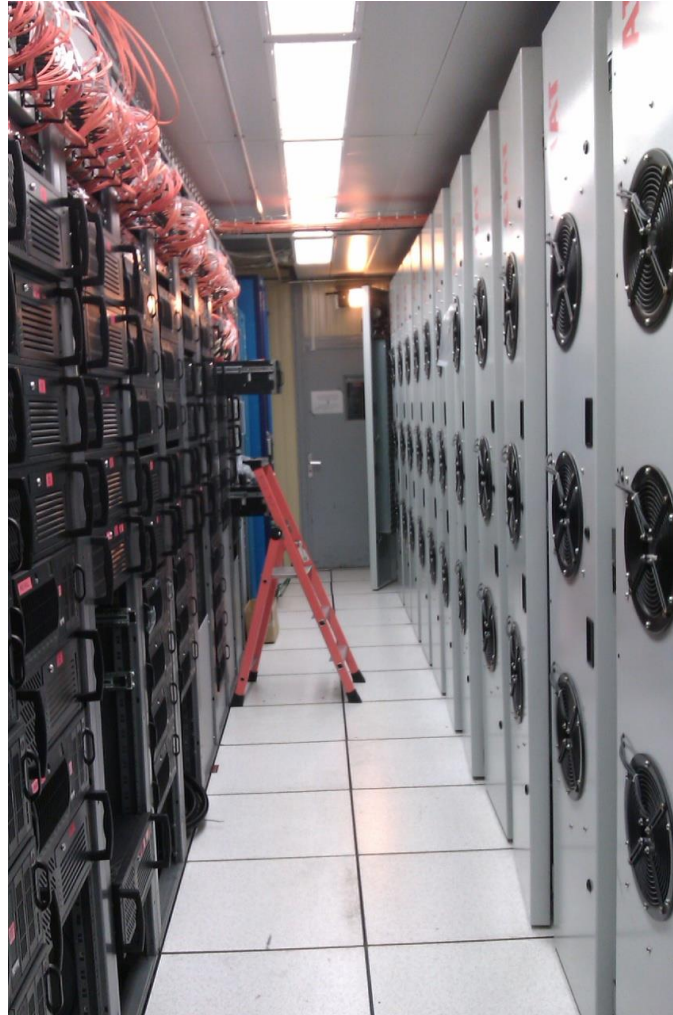


Erwin Siesling, M.P.



ALICE Cluster → ISOLDE

- Just 3 years old
- Water cooled: fits in a small room
- Comes with all components
- Was funded by BMBF
- Support for setup from ALICE
- Servers have many slots for read out cards. Possible future extension of data digitalization of ISOLDE experiments



For more information → Jens.Roder@cern.ch phone 169602